

NE Chicken

Parts 1&2

ATLANTA, GA.

FEBRUARY 11, 1998

NORTHEAST BROILER/FRYER PARTS - PART I FEDERAL-STATE

Trucklot buying activity was mixed with most dealers cautious and making purchases accordingly. Offerings were limited, but more often than not adequate for current trade requirements. Demand through both retail and distributive channels was irregular as competition from other meat items was affecting overall movement. The market tone was generally steady.

PRICES PAID PER POUND, ICE PACKED AND CO2 PACKED BROILER/FRYER PARTS, DELIVERED TO FIRST RECEIVERS IN POOL TRUCKLOT AND TRUCKLOT QUANTITIES.

ITEM CURRENT NEGOTIATED TRADING*

BREAST - B/S 155 BREAST - WITH RIBS 78-79 BREAST - LINE RUN 78 LEGS 41-42 LEG QUARTERS (BULK) 28-29 DRUMSTICKS 34-35 THIGHS 36-37 WINGS (WHOLE) 73-74 BACKS AND NECKS (STRIPPED) 12-14 LIVERS (5 POUND TUBS) 20-25 GIZARDS (HEARTS) 45-50

INCLUDES NEW YORK CITY METROPOLITAN AREA, NORTHERN NEW JERSEY, MASSACHUSETTS, CONNECTICUT, RHODE ISLAND, AND PENNSYLVANIA (NORTHEAST OF HARRISBURG). * TODAY'S NEGOTIATED SALES AS OF 11:30 A.M.

Belleville Poultry

Belleville, Pa.

Wednesday, February 11, 1998

Report supplied by Auction

Geese: 1.00-3.00 ea.
Turkeys: 9.00 ea.
Guineas: 4.00 ea.

Roosters: 4.00-7.25 ea.
Bantams: 1.00-3.75 ea.
Heavy hens: 3.00-4.00 ea.
Silkies: 1.75-3.25 ea.
Muscovy hens: 4.50 ea.
Muscovy drakes: 9.00-11.00 ea.
Mixed ducks: 1.75-4.75 ea.
Barn pigeons: 1.50-2.50 ea.
White birds: 4.00-6.00 ea.
Fancy birds: none.
Peacocks: none.
Pheasants: 2.00-3.00 ea.
Doves: none.
Quail: none.
Guinea Pigs: none.
Rabbits: under 4 lbs. 1.75-8.00 ea., 4-6 lbs. 4.50-7.00 ea., over 6 lbs. 8.00-10.00 ea.
For more information phone 717-242-2898.

National Egg Market

ATLANTA, GA.

FEBRUARY 11, 1998

NATIONAL EGG MARKET - AT A GLANCE:

Prices were unchanged to lower on the East Coast and in the Midwest, and unchanged on the West Coast. The market tone ranged steady to weak. Demand covered the full range and was mostly moderate, best where featured. Supplies were adequate to ample, but tight in some Florida locations. Breaking stock supplies were adequate to ample for the light demand, and prices were unchanged to lower. Light type hen supplies were sufficient for full plant schedules.

NY Phil

Frozen Eggs

ATLANTA, GA.

FEBRUARY 06, 1998

EASTERN REGION FROZEN EGGS, FEBRUARY 06, 1998. FEDERAL-STATE

Prices were lower. The market tone was weak. Demand was very light to fair, mostly light. Plants focused on filling previously committed orders. Supplies were adequate. Liquid and frozen eggs (ingredients included) processed under federal inspection in the Eastern region for the week

Jersey Shore Livestock

Market, Inc.

Auction every Thursday

at 4:00 p.m.

Jersey Shore, Pa.

Report supplied by Auction

Thursday, Feb. 12, 1998

RETURN TO FARM CALF

51.00-80.00.

GOOD VEAL: 30.00-50.00.

COMMON VEAL: 10.00-29.00.

CHOICE STEERS: 61.00-63.00.

SELECT STEERS: 57.00-60.00.

COMMON STEERS: 50.00-56.00.

COMMERCIAL COWS: 34.00-41.25.

CANNERS-CUTTERS: 28.00-33.00.

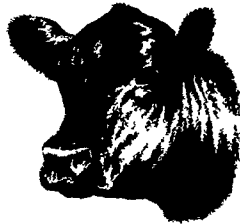
SHELLS: 23.00-27.00.

COMMON HEIFERS: 42.00-52.00.

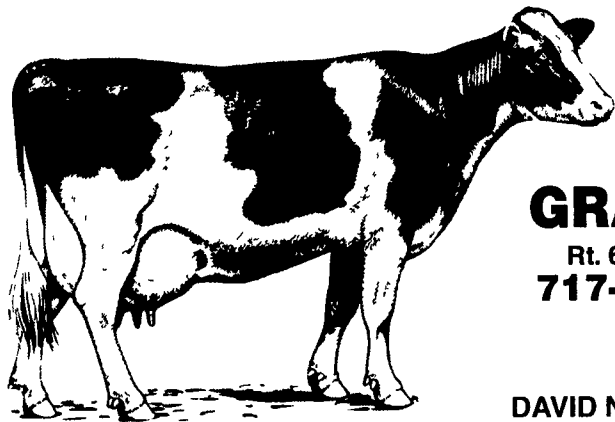
COMMON FEEDERS: 30.00-61.50.

BULLS: 40.00-47.00.

HOGS: 38.00-40.00.



**Feed those grains for big savings.
We will roast on your farm.**



Those roasted grains are really tasty

SCHNUPP'S GRAIN ROASTING

Rt. 6 - Box 840, Lebanon, PA 17046
717-865-6611 Fax #865-7334
800-452-4004
- OR -

DAVID N. GROFF, RD #3 Lewisburg, PA
717-568-1420

LEESPORT FARMERS MARKET
1947 - 1997

LEESPORT, BERKS COUNTY, PA 19533 (610)926-1307

LIVESTOCK AUCTION

EVERY WEDNESDAY
1:00 PM



FARMERS MARKET 9:00 AM to 8:00 PM
FLEA MARKET 7:00 AM til ??

Serving Eastern Pennsylvania for 50 years

Bill Weist & Woody Weist, Managers

FARM

Grower Meetings



717-859-FARM (3276)



- Aaron L. Fisher.....Feb. 17 7:00 PM.....2599 Bachmantown Rd., Ronks, PA
2 Core/2 Category
- Elam K. Miller.....Feb. 20 7:00 PM.....867 Goshen Mill Rd, Peach Bottom, PA
2 Core/2 Category
- * Embers Inn.....Feb. 23 10:00AM-2PM.....Harnsburg Pike, Carlisle, PA
2 Core/2 Category
- * Kreider Farms Rest.....Feb. 25 9:30AM-1:15 PM 1461 Lancaster Rd., Manheim, PA
2 Core/2 Category
- Stevens S. Stoltzfus.....Feb. 25 7:00 PM.....47 Farmdale Rd., Christiana, PA
2 Core/2 Category
- * Colony Inn.....Feb. 26 11:30 AM.....Rt. 31 & Gordon St, Harrington, DE
- Christ H. Esh.....Mar. 6 7:00 PM.....192 Parlett Rd., Anville, PA
2 Core/2 Category

All meetings are FREE and open to growers/farmers. All meetings qualify private applicators for Pesticide Update Points. Specific agendas will be set at least two weeks prior to the meeting and will be available by calling our office. Discussion topics will include, but are not limited to: Nutrient Management; Pesticide Options; Field Trail Results; Pesticide Safety; Sustainable Agricultural Programs...

* Reservations Appreciated - Meal Count

Pennsylvania Agricultural Commodities Marketing Association, Inc.

FORWARD PRICING PACMA FEED INGREDIENTS

Corn
Soybeans
Wheat
Soybean Meal
Cottonseed
Hogs
Cattle

Soybean Meal
Distillers Grains
Hominy
Cottonseed

CASH GRAIN MARKET

Feed Grains
Wheat
Oilseeds

RISK MANAGEMENT

Hedging Services
Market Consultation
Min /Max. Contracts
Specialized Contracts

A privately held full service commodity merchandising firm.

Call today to see how PACMA can broaden your marketing efforts whether you're BUYING or SELLING Agricultural Commodities

Rail Facilities are available at Green Castle & Palmyra, PA
475 East High Street, Palmyra, PA 17078
800-PACMA Inc. • 717-838-7050

1-800-722-6246

Started by Producers for producers

