



1991 Chevy Scottsdale 1500 Suburban
6.2 Liter Diesel, Auto, PS, PB, AM-FM, New
Radials, 45,000 Orig. 1 Owner Miles, Like New

\$9,950

A&J Auto Sales

798 East Main St. Ephrata PA 17522
717-733-2873

FOR SALE



Used Tag-a-Long
BULK LIME TRAILER
w/Auger Unload, Air Slide, Field Ready,
Serviced & Ready To Go
Call 717-867-5161

USED TRUCKS



95 Dodge 2500, SLT, 360 Fuel Inj eng AT, AC,
Loaded, 4x4, 8,800 GVW 40,000 Miles,
Green & Silver
\$18,300



95 GMC 2500 SL Sierra 4x4 350 Fuel Inj AT AC
AM/FM/Cass Cruise Tilt 8 600 GVW 4 10 Rear Black
19 000 Miles
\$17,900

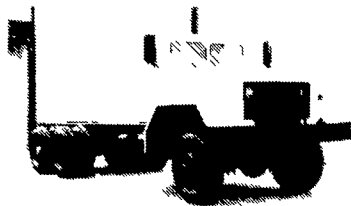
MARTIN'S AUTO SALES

1025 W. Main St. New Holland, PA 17557
(717) 656-6621

ARMY TRUCK PARTS

CHAMBERSBURG, PA

COMPLETE TRUCK INVENTORY
COMPLETE PARTS INVENTORY
THE NATION'S LARGEST ARMY
TRUCK AND PARTS DEALER



6x6 TRUCKS
2 1/2 & 5 TON
UNITS AVAILABLE
ENGINES
TRANSMISSIONS
TRANSFER CASES
DRIVE TRAIN
CAB KITS

Army truck parts catalogs available

MEMPHIS EQUIPMENT

821 Lincoln Way West
P.O. Box M
Chambersburg, PA 17201

717/263-4194 FAX 717/263-4555



GLENN ALLEMAN, GEN. MGR.

MARK SIPES, PARTS MGR.



Woodcrest Motors

SPECIALIZING IN TRUCKS & VANS

1200 North Reading Rd., (Rt. 272) Stevens, (Lancaster Co) PA 17578
717-336-3130



95 DODGE RAM 1500 4x4
SLT Laramie V8 AT Most Options
Blue & Driftwood 50 000 Miles



96 FORD F150 XLT EXTEND CAB
V8, AT, Most Options, 16 000 Miles



95 DODGE DAKOTA,
EXTEND CAB SLT
4x4, V8, AT, A/C, 34,000 Miles, Maroon



96 PLYMOUTH GRAND VOYAGER SE
V6, AT, Dual Air & Heat, Most Options,
22,000 Miles, Maroon



94 CHEV 1500 4x4 SILVERADO
V8, AT, Most Options, 39,000 Miles



93 FORD, F250 4x4
V8, 5-Speed, A/C, Red, Snow
Plow, 88,000 Miles

PHONE
717-274-2000
Toll Free
1-800-650-1420

RTE. 422 WEST
LEBANON, PA

(Across From Lebanon
Valley Mall)

CAR VILLAGE

HEAVY DUTY TRUCKS

Business Hours
Mon.-Fri. 9-9
Sat. 9-4

THIS IS ONLY A PORTION OF OUR HUGE INVENTORY



4x4 4-Door
96 CHEVY 3500
Extra Clean, 27,000 Miles, Loaded, Silverado,
High Output 6.5 Turbo Diesel, AT, A/C, Tow Pkg,
New TK Warranty



96 FORD F250 4X4
heavy Duty 3/4 Ton Power Stroke Turbo Diesel
AF, A/C, 4:10- Gears Aluminum Wheels, Only
12,000 Miles



Rack Body Dump 96 CHEVY HD 3500
Big 15,000 GVW, High Output 6.5 Turbo Diesel,
12ft Body, New TK Warranty, Only 14,500 Miles



4 DOOR F250 4 WHEEL DRIVE
96 FORD HEAVY DUTY
Powerstroke Turbo Diesel, 5 Spd., AC, Tow Pkg,
It's Perfect, Only 19,000 Miles



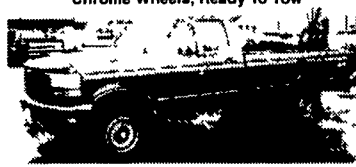
6 WHEEL DRIVE
96 CHEVY SUPER CAB DUALY
Perfect, Only 6,500 Miles, High Output 6.5
Turbo Diesel, AT, A/C, 4, 10 Gears, Loaded
Silverado, Chrome Simulators,
Lots Less \$\$ Than New.



4x4 DODGE CLUB CAB
96 DODGE 2500 SLT LARAMIE
A Nice One, Only 28,000 Miles, Cummins Turbo
Diesel, AT, A/C, Limited Slip, 4 10 Gears,
Chrome Wheels, Ready To Tow



14 FT BOX TK, 95 FORD E-350
A Must See If You're Looking For A Clean One
This Is It. 56,000 Maintained Miles, V8, Auto, A/C,
14 Ft Body - \$16,900



5 SPD, DIESEL 4X4 93 FORD F250 XLT
Strong Diesel Power, Heavy Duty 3/4 Ton Lock
Out Hubs, Dual Tanks, A/C Only 66,700 Miles,
Nice Driver, Clean Tk



5 SP. POWERSTROKES
4x4 HEAVY DUTY FORD F250 S
96, 3 55 Gears, 25,000K
95, 4 10 Gears, 49,000K
Remaining Factory Warranty
Very Strong Pulling Tks



4X4 CREW CAB DUALY
88 CHEVY SILVERADO
It's A Beauty, Only 48,000 Original Miles, Fuel Inj
454, 4 Spd Trans, AC, Class 3 Hitch, Chrome
Simulators, Ready To Tow

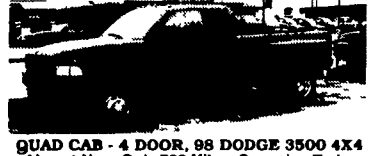
DODGE TOW MACHINES



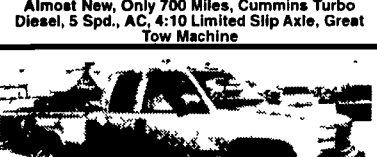
5 SPD, DUALY
97 DODGE 3500 SLT LARAMIE
Awesome Tow Machine, Cummins Turbo Diesel,
5 Spd, AC, Tilt, Cruise, Heavy Duty Frt. & Rear
Dana Axles, 4:10 Gear, New Truck Warranty



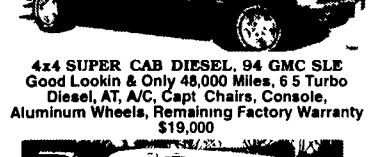
4x4 CLUB CAB DUALY
96 DODGE 3500 SLT LARAMIE
Cummins Turbo Diesel, AT, AC, 4:10 Limited Slip
Axle, 30,800 Miles



QUAD CAB - 4 DOOR, 88 DODGE 3500 4X4
Almost New, Only 700 Miles, Cummins Turbo
Diesel, 5 Spd., AC, 4:10 Limited Slip Axle, Great
Tow Machine



4x4 SUPER CAB DIESEL, 94 GMC SLE
Good Lookin & Only 48,000 Miles, 6.5 Turbo
Diesel, AT, A/C, Capt. Chairs, Console,
Aluminum Wheels, Remaining Factory Warranty
\$19,000



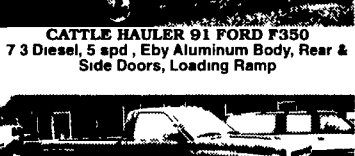
Work Van,
95 FORD E250 Super Cargo Van
Nice & Clean, 47,000 Miles, Heavy-Duty
3/4 Ton V8, Auto, A/C, Rear Glass Only



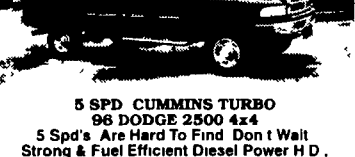
FARM FLATBEDS
'84 Ford F350, '85 Chevy C-30
Run Well, Call For Details \$4,000



CATTLE HAULER 91 FORD F350
7 3 Diesel, 5 spd, Eby Aluminum Body, Rear &
Side Doors, Loading Ramp



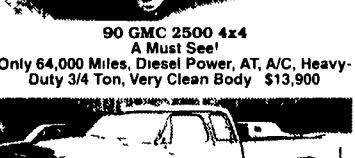
5 SPD CUMMINS TURBO
96 DODGE 2500 4x4
5 Spd's Are Hard To Find Don't Wait
Strong & Fuel Efficient Diesel Power H D,
5 Spd, Only 35,000 Miles



90 GMC 2500 4x4
A Must See!
Only 64,000 Miles, Diesel Power, AT, A/C, Heavy-
Duty 3/4 Ton, Very Clean Body \$13,900



4x4 DODGE CLUB CABS
93 - 2 Available
AT & 5sp, LE Pkg, Cummins Turbo Diesel, Heavy-
Duty 3/4 Ton, Lock Out Hubs,
They Run Well



HEAVY DUTY DIESEL
92 FORD F250 XLT
4 Wheel Drive - Take A Look This Is A Nice One,
60,000 Original Miles, 7 3 Diesel, AT, AC, Tow Pkg



MECHANIC'S SPECIAL
89 Ford F250, 4x4, V8, 5sp - \$3,500



12 FOOT BOX
Like New Reinforces Roof, Ladder Racks, Roll
Up Rear Door, Extra Clean Inside & Out
Brand New \$6,500 - Your Price \$3,500



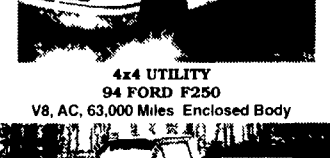
480 POWERHOUSE 92 FORD F250 SUPER
CAB 4X4 Ready To Pull Those Heavy Loads,
Fuel Inj V8, AT, A/C, Capt. Chairs, It's All Muscle,
59,000 Miles \$16,900



4x4 UTILITY
94 FORD F250
V8, AC, 63,000 Miles Enclosed Body



HEAVY DUTY DIESEL
92 FORD F250 XLT
4 Wheel Drive - Take A Look This Is A Nice One,
60,000 Original Miles, 7 3 Diesel, AT, AC, Tow Pkg



HEAVY DUTY DIESEL
92 FORD F250 XLT
4 Wheel Drive - Take A Look This Is A Nice One,
60,000 Original Miles, 7 3 Diesel, AT, AC, Tow Pkg