

The Official Publication For The
**PENNSYLVANIA MASTER CORN
 GROWERS ASSOC.**



CORN TALK

PENNSYLVANIA MASTER CORN GROWERS ASSOC., INC.

Corn Talk, Lancaster Farming, Saturday, January 24, 1998

A
 SPECIAL
 SECTION
 IN
 LANCASTER
 FARMING
MARCH

7



ADVERTISERS
 PLAN NOW
 TO RESERVE
 YOUR SPACE



PHONE

717-626-1164

OR

717-394-3047



DEADLINE

FRIDAY

FEBRUARY 27



McPhersons Cultivate A-Maize-Ing Entertainment

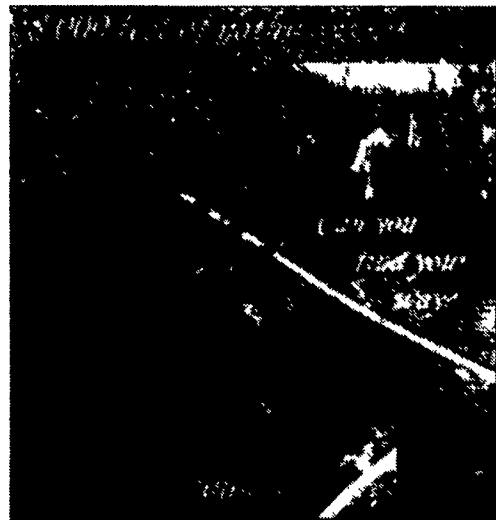
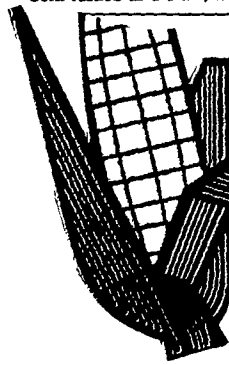
JOYCE BUFP
 York Co. Correspondent
 NEW PARK (York Co.) —
 Don't cut through the corn.
 Don't pull off any ears. No run-
 ning. No cigarettes!
 Got those rules? Then
 you're ready to take on the
 challenge of Maize Quest.
 After an introductory initia-
 tion to the fine art of safely ne-
 gotiating their way through a
 corn field, including a pointed
 warning about how cigarettes
 can start fires in a dry field,
 several thousand people did
 just that last fall at the McPherson
 family's Maple Lawn
 Farms, New Park. The south-
 ern York County corn maze
 was one of several such con-
 sumer-entertainment out-
 reaches that have been culti-
 vated around the region in the
 last few years.

Corn rustled as a brisk, fall

breeze stirred through the dry-
 ing stand of upside-down ears
 and drooping, brown stalks.
 A cricket dashed across a
 packed path, seeking a haven
 from a pounding by passing
 sneakers.
 And a gleeful cluster of chat-
 tering church-group members
 gathered to add yet another
 section to their map of the intri-
 cate corn maze. If they could
 complete the map, it would
 show them the way out.
 Maize Quest was truly a
 family endeavor of the Paul
 and Gail McPherson clan,
 longtime advocates of educat-
 ing the consuming public about
 where food originates. From
 their U-pick orchard to period-
 ic newsletters sent to a wide
 mailing list of customers, the
 McPherson's Maple Lawn fruit
 and grain operation has always
 been on the leading edge of

agriculture-education activism.
 Sharing in the major plan-
 ning and implementation of
 Maize Quest, with its heavy
 emphasis on information along
 with entertainment, were sis-
 ters Hugh and Gretchen Mc-
 Pherson Hugh, a recent Penn
 State graduate with an ag busi-
 ness degree, combined his
 interest in undertaking a new
 farm venture with the art de-
 gree of his sister, Gretchen,
 who lives in California.
 Their brainstorming birthed
 the Maize Quest idea months
 before the first corn seed went
 into the soil. Hugh had heard
 about other mazes in the area
 and saw it as an extension and
 alternative use of the farm's
 normal planting of a large acre-
 age of grain corn. They envi-
 sioned a corn maze that would
 not only entertain visitors, but

(Turn to Page 2)

CORN TALK

Corn Talk, Lancaster Farming, Saturday, October 11, 1997



Corn yields are becoming evident as harvest is in full swing with a wide variation in yields because of weather conditions. Clarence Hoover runs the silage harvester on the John S. Nolt farm north of New Holland.

**New PMCGA President
 Wants Vote
 On Corn Checkoff**

ANDY ANDREWS
 Lancaster Farming Staff
 SHELOCTA (Indiana Co.)
 — Chris Kimmel is steadfast
 about his plans

The new president of the
 Pennsylvania Master Corn
 Growers Association
 (PMCGA) intends, within the
 next two years, to put a referen-
 dum before the state corn
 growers

That referendum will
 address the question, will Pen-
 sylvania have a corn
 checkoff?

Already, the PMCGA knows
 the direction it must take. At the
 Crops Conference in Grantville
 early this year, corn growers

including about 800 in
 corn. The passing of a checkoff,
 calculated at point of sale and
 based on a similar program in
 Maryland, would mean a lot to
 the commercial growers who
 want to see better promotion of
 the product, in addition to
 money for research at land-
 grant universities (Those same
 universities are already experi-
 encing the withdrawal of gov-
 ernment money — those dol-
 lars have to come from
 somewhere.)

This is the first time Kimmel
 has served as president of
 PMCGA, although he has
 served as vice president for a
 few years. He serves on the
 com...

- **GROWERS INFORMATION**
- **FEATURE INTERVIEWS**
- **STATE & NATIONAL ASSOCIATES NEWS**
- **PRESIDENT'S NEWSLETTER**