

# Carroll County 4-H

(Continued from Page B18)

team in oral reasons and ranked first overall in the contest.

Mike Creek placed first in Guernseys and Jerseys, and 16th in Ayreshires and Brown swiss. Mike placed second in oral reasons and was second overall in the contest. Barbara Schenning placed fifth in Jerseys and ninth in Holsteins. She ranked eighth both in oral reasons and overall in the contest. Amanda Valentine placed

10th in oral reasons, and ranked 13th in Holsteins and 14th in Guernseys. Dr. Lee Majeskie coached the team, and Anne David was assistant coach.

First year members of the Carroll County 4-H Dairy club recognized at the program were Bryan McGee, Matt Brauning, and Jason Fringer. The evening concluded with a game of dairy trivia hosted by Crystal Stambaugh, dairy princess, and Jessica Fritz, farm queen.

## Play Workshop

LANCASTER (Lancaster Co.) — A live satellite broadcast at the Farm and Home Center on Tuesday, March 3, from 7 p.m. to 9 p.m., will introduce caregivers to

the different kinds of play and to the stages of play development.

The importance of play for children's development and age-appropriate play experience will be shared. Ways to facilitate play for all children—including those who have problems playing, will also be discussed.

Cost is \$5.



Dairy judging team members include, back from left, Anne Davis, judge; Brett Haines, Jeff Sutton, Jeena Rinehart, and Jason Fringer. Front, from left, are Ryan Haines, Ashley Burdette, Brandi Burdette, and Jenae Rinehart.



# Move to Kubota Country

Move to Kubota country and you'll find versatility, durability and operator comfort. Kubota's 13 to 18 PTO HP B-Series tractors are compact enough to fit in tight places and powerful enough to get lots of jobs done. Kubota performance matched implements include rotary tillers, front loaders, mid and rear mount mowers, boxscrapers and snowblower.

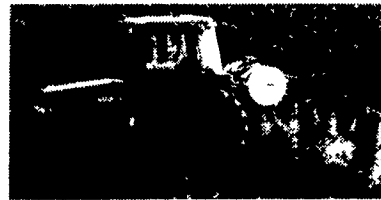
Need even more power? Move up to the innovative Grand



L-Series with 25 to 37 PTO HP. Hydrostatic steering, shuttle transmission with shift-on-the-go provides ease of operation. Kubota's exclusive optional Glideshift transmission has clutchless operation through all eight speeds, forward and reverse. Grand L's are smooth and quiet, with Kubota's E-TVCS engine which ensures clean

emissions while providing high torque rise. Get one with an integral cab with heat and air-conditioning for year 'round comfort.

Visit your Kubota dealer and find out how to make your move — to Kubota country!



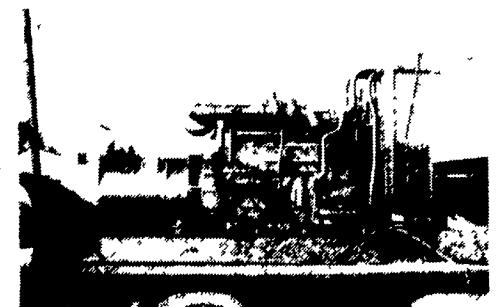
Kubota Tractor Corporation markets a full line of tractors through a nationwide network of over 1,000 dealers. Financing is available through Kubota Credit Corporation.



- PENNSYLVANIA**
- ALBURTIS/LEHIGH VALLEY**  
Canns-Bilco Outdoor Power Equipment  
125 E. Penn Ave  
(610) 966-2001 (610) 820-0222
- BLOOMSBURG**  
Tractor Parts Company  
355 Central Road  
(717) 784-0250
- CHAMBERSBURG**  
Stouffer Bros Inc.  
1066 Lincoln Way West  
(717) 263-8424
- COCHRANVILLE**  
Stoltzfus Farm Service  
1043 Gap Newport Pike  
(610) 593-8424
- COGAN STATION**  
C H Waltz & Sons  
Farm & Industrial  
Sales, Service & Rental  
Lawn & Garden Equipment  
1 Mile West of Warrensville on Route 973  
(717) 435-2921
- ELIZABETHTOWN**  
Messick Farm Equipment  
Rheems Exit Route 283  
(717) 367-1319

- HONESDALE**  
Marshall Machinery Inc  
R R. 4 (Box 630) Route 652  
(717) 729-7117
- LANCASTER**  
Keller Bros.  
1950 Fruitville Pike  
(717) 569-2500
- LEBANON**  
Keller Bros.  
RD #7 Box 405  
(717) 949-2000
- NEW BERLINVILLE**  
Erb & Henry Equipment Inc.  
22-26 Henry Ave  
(610) 367-2169 Fax (610) 367-6715
- PIPERSVILLE**  
Pipersville Garden Center  
Route 413  
(215) 766-0414
- READING**  
Nicarry Equipment Inc  
Route 65  
(610) 926-2441
- STATE COLLEGE**  
Keystone Power Equipment  
Rentals ♦ Sales ♦ Service  
2501 E. College Ave  
(814) 234-8311

- YORK**  
York Tractor Inc  
2397 Carlisle Road  
(717) 764-1094
- MARYLAND**
- CHESTERTOWN**  
W N Cooper & Sons Inc  
Route 291  
(888) 333-7348 (410) 778-3464
- NEW JERSEY**
- BRIDGETON**  
Farm-Rite, Inc  
122 Old Cohansey Road  
(800) 752-6373 (609) 451-1368
- ELMER**  
Rook's Farm Supply Inc  
163 Route 77  
(609) 358-3100
- MOUNT HOLLY**  
Material Handling Systems  
By Hainesport Auto & Truck  
Repair Center Inc  
1320 Route 38  
(609) 267-6100 Fax (609) 267-2114



## GENERATORS

Sales ★ Service ★ Rentals  
\* Complete Generator Systems  
\* PTO \* Portables \* 2-1600 KW  
"We Service It If You Have It  
And Sell It If You Need It"

34 W. Mohler Church Rd.  
Ephrata, PA 17522

Tel: 717-738-0300  
Fax: 717-738-4329



## All-Plant LIQUID PLANT FOOD 9-18-9 PLUS OTHERS!

- Contains 100% white ortho phosphoric acid. Made in USA.
- Non-corrosive. Won't settle.
- Top quality. Excellent service.
- Newest equipment
- Financially sound...and growing!

### Big Demand Requires More Distributors!

- I sell to farmers. How do I become your distributor?
- I'm a farmer. What's the price? Where do I get it?

CALL or SEND FOR FACTS:

Phone: 814-364-1349

ALL-PLANT LIQUID PLANT FOOD, INC.

821 State Rd. 511 N., RFD 3,  
Ashland, Ohio 44805