

Ford 1984 E-350, cube van, 14' box, diesel, 6.9L, many new parts, 157,000 miles, very dependable, \$6500 firm. Call 717-834-9668

White lime spreader truck, hydraulic driven, \$1,500. '79 Parker dump trailer, 34' frame w/32' box, triaxle w/ lift axle, 60" sides and tarp, 2-way gate, \$12,000. (215)249-1826.

Root snow plow, complete, 11' quick hitch, also sander spreader. Both excellent. 610-367-6483 anytime.

Single axle Mack dump truck, diesel, 5+2 trans, \$1800. 717-292-3030

Rogers 24', 50 ton detachable gooseneck trailer w/ wetline, pony motor. Tri-Brook 24' aluminum dump trailer. 1981 Ford F-350 utility body. 1979 tandem axle GMC general. (610)367-1630.

Super Rugged ♦ Commercial Grade

WHY CURTIS?

FEATURE 7 (OPTIONAL) GRILL MOUNTED REMOTE LIFT SWITCH

Allows operation of lift cylinder from front of truck to assist in plow installations.

FEATURE 1 HIDE AWAY HYDRAULICS

Our hydraulic cylinders tuck away our power system. No belts and pulleys under the hood and no lift cylinder box on the front of your truck. A 1/4" steel plate and gasketed top cover are also standard features. This system allows superior airflow to radiator. Top covers instant down pressure with added weight of the cutting edge.



FEATURE 4 FORMED CROSS MEMBERS

Give an exclusive stability, unseen in the plow.

FEATURE 5 ATTACK ANGLE

Our modern designed moldboard features an 18° contact angle for superior glide trip in most conditions.

EXTENDED PUSH FRAME (E)

Clearly, the widest push frame on the market. ADVANTAGE is per se but of force through the plow system is not the vehicle frame.

FEATURE 6 PLATE STEEL A FRAME

This has cut into systems previously used. It is a steel plate, gasketed and bolted to the vehicle frame.

FEATURE 3 FOUR PIN PIVOT FRAME

Spreads weight evenly across frame and adds support to lower section of plow.

Compared to the rest...

Curtis Feature #	Description	Fisher	Mayer	Western	Best	One-way
1	Hide away Hydraulics					
2	Extended Push Frame					
3	Four Pin Pivot Frame					
4	Formed Cross Members					
5	Attack Angle					
6	Plate Steel A Frame					
7	Grill Mounted Lift Switch Option					

NO!

ROCK SPRING HARDWARE

in CECIL COUNTY
28 Miles South
Of Lancaster
1320 Rock Springs Rd.
(Rt. 222)

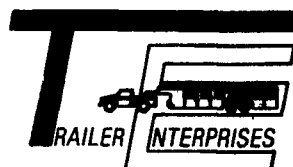
RISING SUN
Hours:
Mon.-Sat.
8 am-8 pm;
Sun. 8-6 pm

410-658-5978



1-800-858-0288

"Revvin' to take care of ALL your trailer needs."



HAS BUILT A REPUTATION



United Expressline
8x16 Cargo

Bison
616HPT

EPY Aluminum
7x20 Gooseneck

NEW & USED: STOCK - HORSE - CARGO - INDUSTRIAL - UTILITY - CAR HAULERS

Trailer Enterprises is here to serve you. We are a full service facility providing YOU with the very best service available in the industry!

TRAILER ENTERPRISES, INC.

13121 MAUGANSVILLE ROAD
HAGERSTOWN, MD 21740

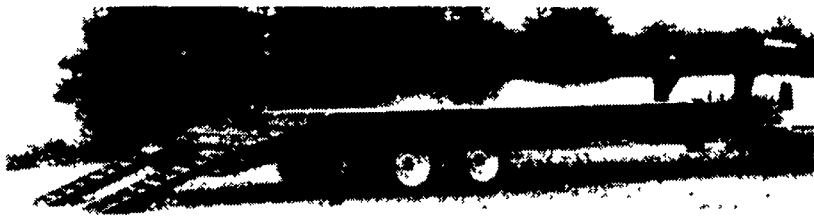
Just give us a call at (301) 791-5343.

Hours: 8AM-5PM Monday-Friday
9AM-12 Noon - Saturday



ECONOLITE STEEL FLATBED

Model 5595
8'X24'
Steel
Flatbed
w/4' Flip-Up
Beavertail

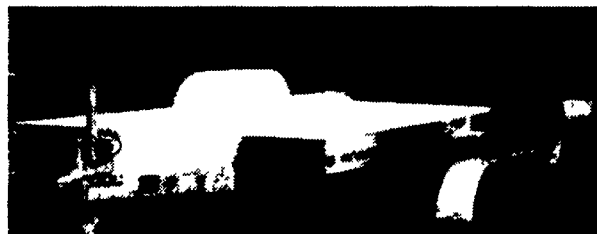


ALUMINUM STOCK TRAILER

16' & 20'
Models
In Stock



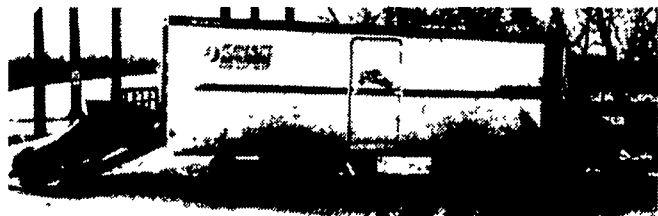
Model 9418 - 2 Horse Side By Side with Walk-Thru Manger to 4' Dressing Room



Model 3110 - All Aluminum Open Trailer, 8'6" Width x 17'6" Platform Length

Snowmobile Trailers In Stock

MODEL 1645 20' & 18'- 4 place enclosed with optional side door and graphics



Model 1630 - 2 place all aluminum tilt



Model 1665 - 12' enclosed ATV/Snowmobile trailer



1996 Ford E250 Cargo, 351 7200 GVW, AT, PS, PB, 17 K mi.



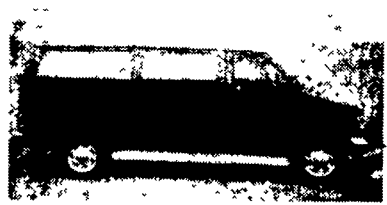
1996 Ford E150 XLT 8 Pass, 351, AT/OD, A/C, PW, PL, Tilt, Cruise Pri Glass 37 K mi



1996 Chevy Express LS 1500, 8 Pass, 350 AT/OD, Dual Air & Heat, PW, PL, Tilt, Cruise, Pri. Glass, Cassette & CD, Towing Pkg., 35K Miles



1996 Ford E-150 XLT, 8 Pass., 351, AT/OD, Dual A/C & Heat, PW, PL, Tilt, Cruise, Pri. Glass



1995 Ford E350 XLT 12 Pass, 351, AT/OD, Dual Air/Heat, PL, PW, Tilt, Cruise, Pri Glass, 44 K mi.



1997 Ford E350 XLT, 12 Pass, 5.4 Triton V8, AT/OD Dual A/C & Heat, Privacy Glass, PW, PL, Tilt, Cruise 27 K Mi



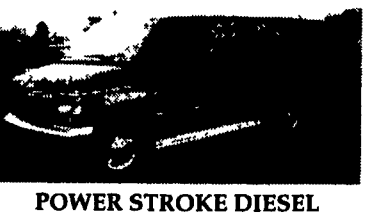
1995 Chevy Truck, 16' Box, 4 Cyl. Diesel, 5 Spd., 14,250 GVW, 56K Miles.



1996 Ford E350, 16" Hicube, 10,700 GVW, 7.3 Powerstroke, AT/OD, AC, 18K Miles.



1992 Nissan UD 1800, 16" Cube, 6 Cyl, Diesel, AC, 108K Miles.



POWER STROKE DIESEL
1995 Ford E350 XLT 15 Pass 7.3 Power Stroke Diesel, AT/OD, Dual Air/Heat, PW, PL, Tilt, Cruise, Pri Glass, 87K mi.



4161 Oregon Pike, Ephrata, PA 17522

Chevrolet • Oldsmobile • Geo

717-627-1220 or 717-859-7700

AT THE BROWNSTOWN EXIT OF RT. 222

Four Way Auto Sales

Specializing In Vans

Toll Free 1-888-847-8029 or 717-354-3199