



**1990 INTERNATIONAL 4600**  
7.3L, 5-Speed, 16' Van with side door,  
21,000 GVW  
-CALL FOR DETAILS-

**1998 ISUZU NPR DIESEL**  
16 ft Morgan Maximizer Van Body  
CALL KEITH FOR DETAILS



**1985 MACK 'R' MODEL**  
E6 350; 15-Speed Fuller,  
Good Condition  
-CALL FOR DETAILS-



**NEW 97 & 98 ISUZU NPR**  
Cab & Chassis In Stock  
2 - Demo Specials

Large inventory of Iveco Parts in stock

Ask Keith  
how you can  
save on  
demo

# READING MACK

**610-929-9433**

4226 Pottsville Pike  
Reading, PA



# LEFEVER BROS. CHEVROLET GEO

YOUR DIRECT LINE TO GENUINE GM PARTS

**(800) 533-3837**

When you call the number listed above, you'll reach our wholesale parts specialists, who can help you keep your GM repair work moving quickly.

Ask about:

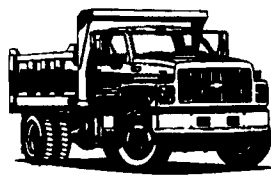
- Specializing in GM Medium Duty Trucks, Current and Obsolete.
- \$500,000 Parts Inventory.
- Parts Locator for Those Hard to Find Items.
- We Ship Anywhere, Local Delivery Available.
- Experienced, Knowledgeable Personnel.

Mon., Tues., Thurs., Fri.  
7:30 a.m.-4:30 p.m.  
Wed. 7:30 a.m.-8:30 p.m.  
Major Credit Cards Accepted

**(717) 432-9697**

Quality Dealer Since 1921  
406 U.S. Rt. 15, Dillsburg, PA 17019

**GM Goodwrench Service**



**Kodiak Chevy Trucks**  
**CAT DIESEL POWER**

## FOR SALE

**1989 Peterbilt Conventional,**  
50,000 GVW, Set up for  
20'-24' body, L-10 280  
Jake, 9 speed, OD, A/C,  
243" WB, 161" CA  
**\$17,000**  
Call Steve at  
Rigidply Rafter  
(717) 866-6581

**MOTORS**  
New & Rebuilt  
350, 366, 427, 454  
6.2 Diesels  
Rebuilt & Used  
Will Install  
Roll Back Service,  
(at cost)  
717-762-6415

**Truck Body**  
wooden, 22' long,  
8' rack over cab,  
4' removable sides  
**\$500 Firm**  
Free Delivery Available  
410-357-4073  
After 7pm

FOR SALE: 8'x14' Morgan stake body with sides, steel D-plate over wood floor, came off of high lift truck, make offer. 717-366-2173

FOR SALE: New 8'x24' stake body. Call for details. 717-366-2173

WANT: Tires and wheels to fit C-50 Chev '70 truck (10-lug split rim or not). Montgomery Co. (610)754-7012.

# KELLER BROS.

(Buffalo Springs) Lebanon, PA

**717-949-2000 or 1-800-363-2767**

## HEAVY DUTY & LIGHT DUTY TRUCK CENTER



3 yr. Unlimited Mileage Warranty Incl. On Most 1990 & Newer Used Vehicles

**1990 FORD SUPER DUTY DUMP TRUCK**  
Diesel, 5-Speed, A/C, L-Pak



**1996 LX WINDSTAR**  
Low Miles, Quad Seats, Loaded, Dual A/C  
**2 1/2 IN STOCK**



**1998 FORD E250 H.D. CARGO VAN**  
5.4 L, AT, Work Bin



**1989 GMC 1500**  
4x4, 5 Speed, V8  
**\$8,995**



**1995 FORD RANGER 4x4 SUPER CAB**  
AT, A/C, Cass, 4L, Low Mileage  
**\$16,995**



**1995 CHEVROLET 1500 SUPER CAB,**  
4x4, AT, V8, Silverado Pkg, PW, PL, T, C, Cass



**1997 FORD F350 CREW CAB**  
4x4, XLT  
**3 IN STOCK**



**1997 FORD F250 H D Diesel, 4x4 Super Cabs, Short Box (2 in stock)**



**1997 FORD F350 XL, 4X4 Heavy Duty**  
7.3 Turbo Diesel  
**2 IN STOCK**



**1993 MERCURY VILLAGER GS**  
Loaded  
MANAGER  
SPECIAL **\$9,900**



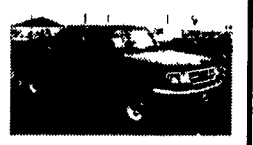
**1989 FORD F150 4X4**  
AT, V8, XLT  
**\$8,650**



**1995 FORD EXPLORER XLT**  
4x4, 4 door, Low Mileage



**1993 FORD RANGER SUPER CAB**  
5-Spd, Off-Road Pkg, 4x4 "Just Arrived"



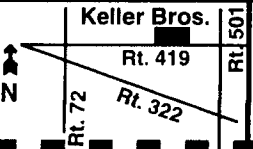
**1995 FORD F150 XLT 4X4**  
AT, V-8, Short Box  
**\$18,995**



**1984 FORD RANGER**  
4x4, 5 Speed  
**\$3,995**



**1991 JEEP WRANGLER 4x4**  
5-Speed, Black "Clean"



**KELLER BROS. FORD HAS SERVED CENTRAL PENNA. AREA FOR MORE THAN 75 YEARS.**

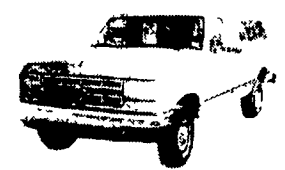
Mon.-Fri. 9-9; Sat. 9-4  
Most Used Vehicles  
Carry a 3 year Unlimited Mileage Warranty

Largest Stocking & Selling Extended Cab GMC Dealer in 7 States

# JONES BEST BUY 4X4'S TRUCKS

**JONES**  
**717-394-0711**

PONTIAC  
HONDA  
GMC  
TRUCK  
1335 Manheim Pike, Lancaster



**'87 FORD F150 4x4**  
Auto, V8, PS, #7662  
Was \$7,995  
**SALE \$5,800**



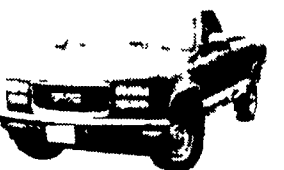
**'95 GMC K15 4x4**  
AT, AC, Vortec 4300, Clean  
#7705 Was \$16,800  
**SALE \$13,900**



**'97 GMC 14' CUBE VAN**  
AT, AC, V8, 22K #7669  
**ONLY \$18,999**



**'97 DODGE 3/4, 4x4,**  
V10, SLT, AT, A/C  
#7739  
**ONLY \$21,780**



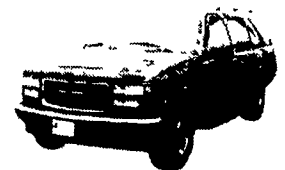
**'94 GMC K25 4x4**  
3/4, AT, AC, 350, SLE  
#7718, Was \$17,900  
**SALE \$14,400**



**'88 CHEV K15 4x4**  
350 Silverado, A/C, 5-Spd., 90K #7738  
**ONLY \$7,400**



**'96 PLYMOUTH VOYAGER**  
AT, AC, V6, 7 Pass  
#7733 Was \$16,800  
**SALE \$14,300**



**'97 GMC YUKON 4x4**  
SLE, AT, AC, 350, 18,000 Miles #7735 Was \$30,700  
**SALE \$28,800**



**'95 GMC K15 XCAB 4x4**  
AT, AC, SLE, 350, 31K  
#7724 Was \$20,700  
**SALE \$18,970**



**'97 GMC K15 4x4**  
SLE, AT, AC, 350, Low Miles #7719 Was \$22,700  
**SALE \$20,760**