

1 FARM EQUIPMENT

1990 CASE IH 2096

20.9x38 Rubber,
2700 hrs.
Excellent Showroom
Condition!

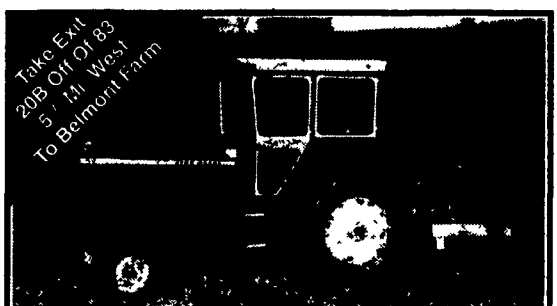


\$26,300 814-766-2253



VanDale 3300 Slinger
Rental Unit. 3 pt. Hookup
Also Lagoon Pump

MILLCREEK
FENCE AND FARM SYSTEMS
2285 Old Phila. Pike
Lanc., PA 17602
717-396-8987



JD 4230, 100 H.P., Very Clean,
Quad Range, Dual Hyd. \$10,500
Also Available:
JD 4440, CAH, power shift, nice. \$20,000
JD 620 w/loader \$3,100
JD 50 w/loader \$3,000

Financing & Trucking Available
410-833-9091

Nicarry Equipment, Inc.
RD #2 Box 2008, Reading, PA 19605
Phone (610) 926-2441
Hours: Mon. - Fri. 8 to 5, Sat. 8 - Noon, Sunday - Closed



• USED COMPACT TRACTORS • USED SKID LOADERS
• REAR BLADES • BACKHOES • LOADERS

SPECIALS on
3-Pt.
SNOWBLOWERS
4 Ft. & 5 Ft.
Kubota
GENERATORS
1600 Thru 3800 Watt

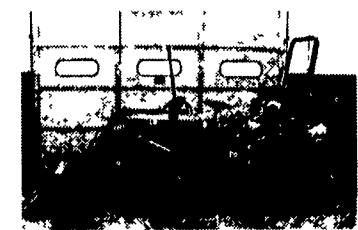
CUSTOMER APPRECIATION DAYS
- Month of February -
15% DISCOUNT ON ALL PARTS
Special Discounts on Service
Call Chris to Set Up Appointment



Kubota L2850 4x4 w/Loader
1,450 Hrs.



Kubota L35 T.L.B. (2 To Choose From)



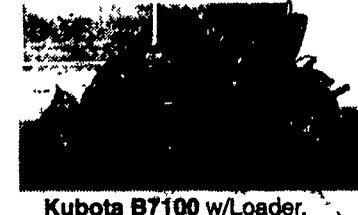
KUBOTA B7100 4x4
w/Loader, Hydro, 750 Hrs.,
Ex. Cond.
\$8,900



JD 855
4WD w/Loader, Hydro, 700
Hrs. Ex. Condition



Kubota B8200 TLB
4WD, Hydro, Power Steering



Kubota B7100 w/Loader,
4WD, 16 HP, Reconditioned
\$7,500

USED 25 HP & UP TRACTORS
(2) Kubota L35 TLB's
Kubota L3450 4WD S.S, Ever Clutch
w/Loader, 800 Hrs.
(2) Kubota L3600 4WD w/Loaders,
400 to 1000 Hrs.
Massey Ferguson 150 w/Loader
(2) Kubota L2250 4WD w/Loaders,
300 & 800 Hrs.
JD 1050 4WD W/Loader

USED 15 TO 24 HP TRACTORS
(2) Kubota B2150 4WD Hydros w/Loaders
(2) Kubota B8200 4WD Hydro w/Loader &
Hoe
Kubota B7100, Gear, 4WD
Kubota B6100 Gear, 4WD
Kubota B-20 TLB 2 To Choose from
Kubota B4200 4WD w/44" mower & vac.
John Deere 855 4WD Hydro w/Loader
700 Hrs. (Ex. Cond.)
John Deere 855 4WD Hydro w/Loader, 850
Hrs.

USED FRONT MOWERS
Kubota F2100 4WD, Hydro, 60" mower,
1600 hrs.
JD F725, 450 Hrs., 54" Deck
3 F-Series Mowers for Parts

USED LAWN & GARDEN TRACTORS
Kubota G4200 2WD Diesel, Gear,
44" Belly Mower, 500 Hrs.
Kubota T1600, 2WD Diesel, 44" Belly
Mower, Hydro
Kubota T1400, 2WD, Gas, 40" Belly Mower
John Deere 425 w/54" mower (nice)
Kubota G1900 4 Wheel Steer w/Grass Vac.

USED SKID LOADERS
Case 1840
Case 1835C

MISCELLANEOUS EQUIP.
Woods 750 Backhoe 3 pt. hitch mount
w/Pump
Goosen Rak'n Vac, Demo
12' Used Woods Batwing Finish Mower
Work Saver Cement Mixer P.T.O., 3 pt.
Hitch \$900
5 & 6 ft. King Kutter Discs, 3 pt. hitch
6' used Harley Power Rakes

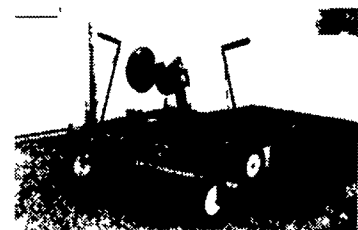
Blow Out Prices!
84" Landpride Rear Landscape Rakes.....\$600
Landpride 11' L.P. Flex Wing Mower.....\$5,900

VEGETABLE GROWERS

NEW & USED EQUIPMENT



**MODEL P150 WATER
WHEEL PLANTER**



**SUPER DELUXE
FLATBED MULCH LAYER**

- ★ Water Wheel Planters Starting at \$955.20
- ★ MULCH LAYERS Starting at \$734.40
- ★ MODEL 2550 & 2600 Raised Bed Layers
- ★ CHALLENGER 1800 MULCH LIFTER
- ★ ALUMINUM CONVEYORS
- ★ PORTABLE PUMP UNITS
- ★ VEGETABLE PACKAGING MACHINERY

EARLY ORDER DISCOUNTS
BUY NOW AND SAVE \$\$\$\$\$\$\$

Call or write for your free 1998 Catalog.

NOLT'S PRODUCE SUPPLIES

152 N. Hershey Ave., Leola, PA 17540
(717) 656-9764



Leaman Tractor Parts

329 Brenneman Rd.,
Willow Street, PA 17584
(Lancaster Co.)

717-464-2874 Fax 717-464-4130



We Now Accept

(Turn Left on Brenneman Rd.
from 222 S at Refton)

DEALER INQUIRIES WELCOMED

TORQUE AMPLIFIERS & CLUTCHES
★ 5 Year Warranty (Complete Unit)
★ Heavy Duty Dana Sprag
★ Price \$695.00
Same day center housing rebuilding, flat rate labor charge \$125.00 + parts

ENGINE PARTS
Fuel pumps, injectors and turbos for most brands of tractors - 1 year warranty. Engine overhaul kits for most tractors - Perfect Circle, Reliance & Navistar.
Call for competitive pricing.

USED TRACTORS

- TW35 Ford Generation II, fully equipped, MFD, 2000 hrs., 1989, 20" radial tires w/duals, very clean.
- Ford Model 7610, MFD, Gen. II, Dual power, load monitor, fresh paint, vg. cond.
- IH 1486 cab, air, rebuilt TA (5 year), 18x38 radial tires, good cond.
- IH 1086 cab, air, red power, very clean
- IH 986 cab, air, fresh 5 yr. TA, very clean
- IH 886 cab, air, 4400 hrs., good cond.
- IH 186 Hydro, 1981, cab, air, fresh paint, rebuilt hydro, very nice cond.
- IH 966 black stripe w/fresh T/A
- IH 1066 black stripe, ca **SOLD**
- Case 1594, cab & ar, PS, fresh engine & trans., new paint
- Case IH Maxxum 5130, MFD, power shift, cab, air, 4400 hrs., very nice cond. 1 avail. w/38" or 46" tires
- 1985 AC Model 8010, MFD, power shift, 16x38 tires & weights
- JD 401B tractor w/grader frame & power broom
- Field Queen 1974 side dump Detroit powered harvester, reconditioned, available with hay pickup, silage head & snapping head
- Yale 3000# hard tires propane forklift
- (2) other forklifts (cheap or for parts)

COMING IN

- JD 4640, ROPS, Quad (poor condition, good project tractor)
- 1991 Case IH 7140, fully equipped, 3800 hrs.
- IH 4366 w/duals & 3pt

USED PARTS

Complete 3 pt. for JD 730 and others. Factory wide front end for Farmall H, M. 1 round style wide front for JD 720 or 730 IH D310 fits 756 IH D467 turbo.