



**'98 CHEVY K2500**  
w/Western 8 1/2' V-Power  
Angle Plow, 350 V8, AT, AC  
Plus 29 Assorted 4x4 Trucks

**'90 FORD F250**  
Heavy Duty, 4x4, 351 AT  
Ready To Go

**Cutter**

1080 S. 4th St.  
Rt. 61 South, Hamburg, Pa. 19526  
1-800-451-2333  
• (610) 562-2216

**Binkley & Hurst Bros.  
Cash & Carry Sale  
On Truck Flat Beds With**

**Scott POLY BOARD RACKS**

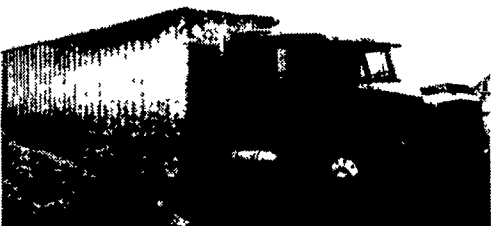


**Scott Flat Bed New Inventory**

- |                                     |            |                |
|-------------------------------------|------------|----------------|
| (1) 9x88 Fleet Flat Bed w/Racks     |            | <b>\$1,550</b> |
| (2) 12x94 Fleet Flat Bed 1 w/Racks  | Platform - | <b>\$1,100</b> |
|                                     | Racks -    | <b>\$600</b>   |
| (1) 14' Standard Flat Bed w/Racks   |            | <b>\$2,200</b> |
| (2) 16' Standard Flat Bed 2 w/Racks | Racks -    | <b>\$2,500</b> |
| (1) 18' Standard Flat Bed w/Racks   |            | <b>\$2,650</b> |
| (1) 20' Standard Flat Bed w/Racks   |            | <b>\$2,800</b> |
| (1) 22' Standard Flat Bed w/Racks   |            | <b>\$2,950</b> |
- Wooden Floor  
Steel Floor

**BINKLEY-HURST  
BROS. INC.**  
Fax 717-626-0996

133 Rothsville Station Rd.  
P.O. Box 0395, Lititz, PA 17543-0395  
(717) 626-4705 1-800-414-4705



**'88 Volvo White, Walk-In  
Sleeper, 3406-425 Cat, 13 Speed,  
100,000 Mi. On Overhaul, Wetline For  
Walking Floor or Dump  
\$16,500 \$14,500 OBO  
717-653-9580**



1981 G.M.C. Top Kick, Cat Rebuilt  
3208, 210 H.P., Allison Auto, P.S.,  
Doubled Frame 9' Dump,  
33,200 G.V.W.  
\$12,500.<sup>00</sup>  
814/942-3821

**36 REAL ESTATE**

13A Farmette, 10 room home, outbuildings, additional acreage available. Sale by owner. Near Gratz, PA 717-682-9785 Dauphin Co. Amish settlement

145 Acre Farm, mostly new buildings including brick ranch house, 40x80 barn, 20x60 silo, 40x80 shed, 36x42 heated shop, 26x76 shed, 1/4 acre pond, woods & stream, fenced pasture. 2 Miles north of Shiloh, OH. 419/752-6907.

1 1/2 acre wooded building lot on a dead end street in Elanco School district, Lancaster county. Asking \$49,900. (717)445-4065

159 Acres, 100 acres wooded, 59 acres cleared. Little Cove area of Franklin Co. STRA-WOOD REALTY/DAVE MCLUCAS 717/597-0234 or 717/328-5629.

162 acre Eastern Wayne Co., NY dairy farm, Mennonite area, 52 tie stalls and free stalls, w/3 silos, newer ranch-style house. 315/594-8260.

208 acre apple orchard, southeast Fulton County, PA. Eight room house, equipment shed, pond. Call Vic Martin, O'Connor, Piper & Flynn, Reahors, (800)455-5115.

14.2A, Southern Lancaster Co., PA. Standard parked. Ready to build. 717-786-7963

247+- Franklin Co. farm acres. 2 homes, barn, other buildings. Large in-ground swimming pool. Abundance of wildlife. Bordered on 3 sides by the Conococheague Creek. Mix of land, tillable wooded & pasture. Very secluded. Lots of privacy. No thru traffic. Call Bob at CENTURY 21-HOMETOWNE V.M. 717-261-8547 (A-337)

34.5A Perry Co., near Ickesburg, borders Buffalo Stream, perked & approved, secluded, great hunting and fishing. Mobiles restricted, \$58,000. 717-438-3115.

4-unit rental property, Galeton, Pottery Co., PA. Hunters need a place to stay? Rent 3 use 1, close to state game lands, fishing spots, stores. Motivated seller, \$55,000. 717-964-3854

53 Acres woodland, \$1500/acre OBO, Juniata Co. 717/527-2402.

60 acre Berks Co dairy farm, (Leesport, PA), \$299,000. 2 pointed stone houses. Development potential. 200 acres available. (610)682-0758.

64 acre dairy farm in South Jersey w/new rancher. 609/451-4485.

**COMMERCIAL BUILDING:** for lease/sale: 60x80 building for manufacturing or warehouse, large doors, 200 amp service, 2 offices, show room, rest rooms, gas and electric heat, 2 parking lots, includes a 3BR house w/modern kitchen, oil heat. Between Lebanon and Myerstown. Will finance. Call (717)866-7315.

Farmette for sale: 13 acres near Ickesburg, Perry County. Beautiful 2-story home next to Panther Creek natural spring, good barn. (717)438-3273.

Former dairy farm, can be again! Also, excellent for horses, beef, sheep, hobby farmer. 44A, 45 tie stalls, dry-cow barn, 2 large implement buildings. 2-story remodeled house w/new kitchen, 4-5 bedrooms, 20x25' deck. \$95,000 Tioga County. 814-367-5472

For Sale: Lodge or home on 262 acres of ground in Allegany County, NY near Alfred State College. Private setting- 20 min. drive from Potter County, PA. Possible division of property, some owner financing. Call 814-698-2206 after 5p.m. or write: Larry Coole, Box 65 O.R.B., Coudersport, PA 16915.

For sale: 4.94A Perk approved with stream, beautiful country setting. Lancaster, PA 717/336-0794.

For sale or rent, 90A dairy farm, Steuben Co., NY. Double 4-parlor, 100 free stalls, 3BR house. 717-665-7734

Horse farm in Berks County for sale. 28 stall barn with attached arena, 70x160 wash stalls, observation room, office, stalls are 12x12 with automatic waters. Stone farm house, excellent shape, built approx. 1850. For more information write to: Lancaster Farming (G-200), PO Box 609, Ephrata, PA, 17522.

For LEASE: 180 cow free stall barn, double 6 parlor, automatic takeoffs, complete calf and heifer facilities, housing for two or more families. Call (814)383-4572.

Horse Lovers: 15.8 acres, 8 year log cape home, 3BR, 2BA, 20x50 barn, open pastures, 1 acre fenced, run in shed, stream and riding ring, \$180,000. Near Blue Marsh. Call (610)488-7239 leave message.

Juniata Co., near Waterloo. 68A, into 7-lots. Selling as total acreage. Great hunting & fishing and investment, \$100,000. 717-438-3115.

Juniata County, 3 miles from East Waterford, perc tested: 3.6 acres, \$19,900; 5.04 acres, \$23,500; 8.34 acres \$24,900; 20 acres \$36,000; 30 acres \$51,000. (717)567-9759 (717)567-7665.

Looking for 500-800 acres of hunting ground w/house to rent. (609)697-2552 after 6pm, (609)691-3377 8-5, ask for Bob.

Luzerne Farm: a new 400 cow dairy in Hunt. Co is accepting applications for two full-time career positions. (1) Assistant Herdperson: responsibilities will include assistance w/herd health, grouping, record keeping, milking and heifer management. (2) Crop Technician: responsibilities will include operating field equipment, servicing and maintenance, record keeping and crop planning. Experience and references required. (814)684-4475.

Meat Mkt/Fairgrounds: Turnkey 3 day a week operation. Grossing \$300,000 now: owner fin poss. \$79,000. #1-01972-97 Real Estate A M E R I C A 1-800-865-7776.

Newark, NY, Wayne Co. 260 acre dairy farm, 255 tillable, loam soil, large fields all tilled, 75-cow stanchion barn w/pipeline & 1500 gal. bulk tank, gravity flow manure pit, 96-cow free stall- 4 years old, 2 small heifer barns, small tool shop. Large farm family home, 4 extra large bedrooms, sleeps 10 comfortably, 1 full bath, 1 lav. w/ laundry room combo, large playroom, LR, DR, large country kitchen. Close to church & Christian school. 315/331-4817 after 7:30pm. No Sunday calls.

Nice Perry Co. 60 Acre Farmette for horses, steers, heifers, chickens, etc. A well kept 4BR farmhouse. In the Blaine area. All for \$175,000. Contact Dale Landis 717/581-8361 or RED ROSE REALTY 717/656-2281.

NORTHUMBERLAND CO. Broker Owned Farmettes. 10-47 acres. Wooded parcels 3-1/2 acres to 87 acres, open farmland 8 to 80 acres. Some owner finance. Cortelyou Real Estate 717-758-9177

Rupp Road, Perry Co., PA., near Ickesburg. 11 building lots, w/restrictions, 5.8A to 23.6A. No mobiles. Starting \$32,000. 717-438-3115

Sullivan Co. Land For Sale- Dushore and Forksville areas. Wooded and open lots. Perked and surveyed, 6-30 acres, priced \$2000 to \$4000 per acre. 717/928-8838.

**110 ACRE FARM**  
Large frame house and bank barn set up for cattle feeding. 20x60 silo, chicken house converted to storage area, produce sales room and refrigeration. Located next to Buffalo Produce Auction just off Rt. 45 near Mifflinburg.  
**HORNING FARM AGENCY, INC.**  
(610) 286-5183

**Farmer Friendly  
Northern Valley Region of November NY**  
Ag Tax Incentives/Rural Family Living  
Farmland Protection Policies/Open  
Spaces Affordable Farms/Infrastructure  
Strong Milk Markets/Technical Assistance  
Your FREE packet of information is available upon request by contacting  
Cornell Cooperative Extension  
of Franklin County  
Malone, NY 12953  
(518) 483-7403

**YORK COUNTY**  
\* Private Setting  
\* Pasture w/Stream & Pond  
\* 30 Highly Tillable Acres  
\* 5 Mi N of Stewartstown  
\* 10 minutes to Exit 1 of Rt 83  
Call Thom Stein or Vickie Butler  
**717/840-4336 Ext. 246 or 244**  
**Century 21  
American Dream, Inc.**  
3030 East Market Street  
(717) 757-6676

**WANTED**  
50 to 150 acres with 80% wooded and year round stream, with or without buildings. Older farm buildings or cabin a plus Will pay cash or 25% down and seller can hold first mortgage if interested in a monthly income. Would like to settle by April 30, 1998.  
**PLEASE CALL  
(717)867-4304**

**CENTRAL VIRGINIA:** Farms and land available from 5 to 500 acres, reasonable prices, very low taxes, farmer friendly communities, agricultural economy, free catalog.  
**State Wide Realty Co.**  
Farmville, Virginia  
**804-392-6163**  
Farms & Rural Properties  
Low Prices, Low Taxes, Free Catalog

**LOVELY LOG HOME** - You must see this beautiful 1 1/2 story log home on 2.44 acres This property features three bedrooms and 2 bathrooms Also includes a solarium with a hot tub Extensive landscaping completes this great package  
**LAND LISTINGS AVAILABLE** - We have several lots available in various locations and price ranges. Parcels range from under 1 acre to 42 acres in size Commercial and residential lots obtainable  
**CALL FOR MORE DETAILS!**  
**FLECK AGENCY REALTORS**  
**717-275-3773**

**POULTRY GROWOUT FARM**  
"IF INTERESTED IN A BROILER OPERATION DON'T OVERLOOK THIS OPPORTUNITY"  
"MUST BE SOLD"  
JUNIATA COUNTY, PA  
50 MILES WEST OF HARRISBURG  
TWO STORY 44x385 curtain house w/concrete first floor, 48,000 broiler capacity, no dwelling, acreage negotiable Utility area on each floor plus attached 20x24 utility room and attached 20x29 work shop Propane generator, all necessary growout equipment 15x26 metal storage shed or work shop, 20 ft inside clearance Easy semi truck access, situated along Rt 75 and only eight miles south of Rt 322 Acreage negotiable, no dwelling, guaranteed sewage test for dwelling Grower contract guaranteed. Building and equipment needs repairs Must be sold, sellers state make offer, possible for some owner financing, call for details  
**LONG REAL ESTATE**  
717-527-4784 - Call Anytime

Stone house & barn with stream.  
Approximately 44 acres of land adaptable to horses or cattle feeding: Call for more information.  
**HORNING FARM AGENCY, INC.**  
610-286-5183