

New Western snow plow frame & mounting bracket, light kit. Fits Ford. \$150 OBO. 717/354-9579.

Pickup bed from '91 Dodge dually w/rubber mat and back bumper, good condition. \$850 OBO. (610)383-5647.

**MACK PARTS FOR SALE:** Engines, blocks, heads & cranks, cabs, hoods & doors, trans, rears, **ALL MACK PARTS REASONABLE PRICES MACK TRUCKS BOUGHT (complete or parts) 888-625-6485.**

Int. dump truck w/466 Int. diesel engine, includes salt box spreader, snow plow, 49,000 miles, clean, \$9500. 717/764-1829.

Lime Spreader, 1986 Mack, 350 12-spd, 44 rear, all Mack w/3 year old New Leader L3020 lime spreader. 814/848-9753.

**WANTED**  
Full Size Pickup Truck 8' Bed, 3/4 Ton, 2 Wheel Drive, Ext-Cab 350/351 w/Overdrive, Price \$6,000-\$12,000 717-865-7440

**BICYCLE CARRIERS**  
SAVE \$\$ FREE UPS  
**1-800-WEAVER-D**  
**1-800-332-8373**

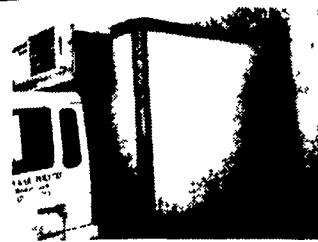


'87 Ford F250, 4x4, 351, Auto, Tilt, Cruise, 90,000 Mi., Needs A Little Engine Work, Boss 9'2" V-Plow. \$6,250



1972 GMC 10-Wheel Dump, Gas, V6, 20 Spd. Trans., Air Brakes, 14' Dump Body w/Plow Harness \$4,400

**610/683-7327**



**12' Reefer Body**, under body refrigeration unit, Uses 220 electric.



**18' Reefer Body** Thermo-King MD-1 diesel, roll up back door also has one side door



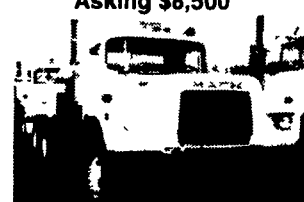
**JCB Loader Model 520 M** Four wheel drive, 42" Forks, rebuilt engine, for height, 13'



**1973-75 Mack Cement Mixers** 10+11 Yard Barrels, 6 Spd., + 13 Spds., 44+ 55,000 Lb Rears, All Runs Excellent **Asking \$8,500**



**1993 Toyota Pickup** 4 Cyl, 5 Spd Trans., AM-FM Radio, A/C, Excellent Condition, High Mileage



**1977 Mack R Model tractors**, 300 engine, 5 spd., 38,000 lb rears, power steering



**New flatbeds available.** Sizes currently available are 12', 14', 20', 22' and 24' Racks are also available



**Towmotor Forklifts** 4 cyl. flat head gasoline, 2000 lb capacity, 36" forks, solid tires. **Asking \$1,500 Each**

**Hundreds of Used Truck Tires For Sale** Sizes from 16" to 24"

**1979 Crane Carrier Cement Mixer**, 10 Yd. Rex Mixer, 230 Cummins, 8 Spd. Trans., 44,000 Lb. Rears **Asking \$8,500**

**Used Overhead Door For Sale** 16'H x 14'W **Asking \$550**

**Yale Electric Hoists** 1/2 ton cap., 440 volt, single and three phase. **Asking \$350/ea.**

**1500 gallon Sludge Tank** w/2cyl. Deutz Diesel

**Pedestal Grinder** Baldor 2 Hp., 3 phase, 220 amps

**Toledo Scale** 1,000 lb. Capacity

**Oil Heaters** 250,000 BTU's

**We have Aluminum Tanker/Trailers** 7500 gal. and up

**Wm. Cohen & Sons**  
**Thorndale, PA**  
**(610) 269-1298**  
**Call between 7 am - 4:30 pm**

Twin Pine ▲ Twin Pine ▲ Twin Pine ▲ Twin Pine ▲ Twin Pine ▲ Twin Pine ▲ Twin Pine ▲

**Twin Pine**



**Providing Quality Service For Over 30 Years**

717-733-6548  
TOLL FREE  
1-88-TWIN-PINE

ONE MILE WEST OF EPHRATA ON ROUTE 322

Over 180  
Quality Preworn  
To Choose From

**All Vehicles With 100% Warranty**



**91 FORD F150 EXT. CAB, 4x2, XLT**, 302 V8, AT, A/C, PS, PB, PW, PL, T, C, Stereo Cass, Alloy Wheels, Blue/Silver #T07527 **\$7,995**



**95 FORD CLUB WAGON**, 15 Pass Ext Van, XL, 351 V8, AT, Dual A/C, PS, PB, C, Stereo, 53,000 Miles, Dk Blue #V95717 Reduced \$1,000 **\$13,995**



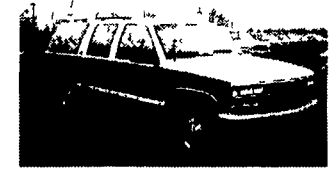
**94 CHEV 1500 EXT. CAB 4x4**, Silverado, 6.5 Turbo Diesel, AT, A/C, PS, PB, PW, PL, T, C Stereo Cass 56,000 Miles White #T62507 **\$18,995**



**96 JEEP GRAND CHEROKEE LAREDO**, 4DR, 4 OL, 6 cyl, AT, A/C, PS, PB, PW, PL, T, C, Stereo Cass, Green #S96944 Was \$18,995 **\$16,928**



**95 CHEV BLAZER LT, 4 DR., 4x4** 4.3 V6, AT, A/C, PS, PB, PW, PL, T, C, Stereo Cass, Black #S87522 Was \$17,995 **\$16,995**



**93 CHEV SUBURBAN 1500 4x4**, 350 AT, Dual Air PS, PB, PW, PL, T, C Stereo Cass, 48,000 Miles, Bench seat in Front & Rear Seat #S07606 **\$18,995**



**94 GMC SAFARI SLE AWD, EXTEND VAN.**, 4.3 V6, AT, A/C, PS, PB, PW, PL, T, C, Stereo Cass, Alloy Wheels, 86,000 Miles, Maroon/Silver, Very Sharp #V42859 **\$9,995**



**95 PLYMOUTH GRAND VOYAGER SPORT**, 3.3 V6, AT, A/C, PS, PB, PL, PW, T, C, Stereo Cass, 39,000 Miles, Black - Very Clean #V25221 **\$14,995**



**96 DODGE GRAND CARAVAN** 3.3 V6, AT, A/C, PS, PB, PW, PL, T, C Stereo Cass, Twin Doors, 66,000 Miles, Blue-Very Good Condition #V31926 **\$14,995**



**95 FORD CHEV. LUMINA SLD**, 3.1 V6, AT, A/C, PS, PB, T, Stereo Cass, 39,000 Miles, Black #C53949 Was \$10,995 **\$9,995**



**87 BUICK LeSABRE SDN**, 3.8, V6 AT, A/C, PS, PB, Stereo Cass, 71,000 Miles, Black #51816, Was \$4,900 **\$3,495**



**96 FORD TAURUS GL SDN** V6, AT, A/C, PS, PB, PW, PL, T, C 54,000 Miles Green #C80400 Was \$10,995 **\$9,995**

Twin Pine ▲ Twin Pine ▲ Twin Pine ▲ Twin Pine ▲ Twin Pine ▲ Twin Pine ▲ Twin Pine ▲

**Largest Stocking & Selling Extended Cab GMC Dealer in 7 States**

**PONTIAC HONDA GMC TRUCK**  
1335 Manheim Pike, Lancaster  
Prices based on straight sale, tax & tags extra. Trades accepted at actual cash value. Must present this ad at time of purchase for sale price

**JONES**  
717-394-0711

**JONES BEST BUY 4X4'S TRUCKS**



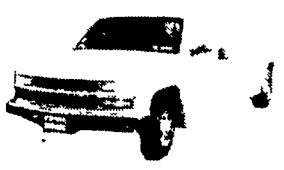
**'87 FORD F150 4x4**  
Auto, V8, PS, #7662 Was \$7,995 **SALE \$5,800**



**'95 GMC K15 4x4**  
AT, AC, Vortec 4300, Clean #7705 Was \$16,800 **SALE \$13,900**



**'96 GMC SUBURBAN 4x4**  
SLE, AT, AC, V8, 8,000 Miles #7715, Was \$31,400 **SALE \$29,400**



**'96 Chev Crew Cab Dually**  
AT, AC, 454 Silverado, 9,000 Miles, #7686, Was \$25,995 **SALE \$24,000**



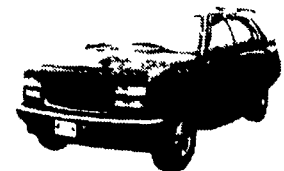
**'94 GMC K25 4x4**  
3/4, AT, AC, 350, SLE #7718, Was \$17,900 **SALE \$14,400**



**'96 CHEV S10 X-CAB**  
V6, AT, AC, LS, 3RD Door #7720, Was \$14,800 **SALE \$12,100**



**'96 PLYMOUTH VOYAGER**  
AT, AC, V6, 7 Pass #7733 Was \$16,800 **SALE \$14,300**



**'97 GMC YUKON 4x4**  
SLE, AT, AC, 350, 18,000 Miles #7735 Was \$30,700 **SALE \$28,800**



**'95 GMC K15 XCAB 4x4**  
AT, AC, SLE, 350, 31K #7724 Was \$20,700 **SALE \$18,970**



**'97 GMC K15 4x4**  
SLE, AT, AC, 350, Low Miles #7719 Was \$22,700 **SALE \$20,760**