

HELP FOR A BUDGET HEADACHE



IN THE WANT ADS

BUY SELL TRADE OR RENT THROUGH THE CLASSIFIED ADS

PHONE 717 826-1184 or 717-394 3047 FAX 717 733 6058

Mon. Tues. Wed. Fri. 8 AM to 5 PM Thurs. 7 AM to 5 PM

14 POULTRY & SUPPLIES

For Pure Muscovy Ducklings That Are Not Hybrid And Have The Firmest Meat, Ask For The **Hoffman Muscovy Duck**. Call For Our Low Prices. Also, French Guineas, Embden Goslings. Free Catalog On Goslings, Ducklings, Chickens, Turkeys, Guineas, Bantam Pheasants, Quail, Chukars, Swans. Medications, Equipment And Books.

717-365-3407
HOFFMAN HATCHERY
Box 129, Gratz, PA 17030

1a CONSTRUCTION EQUIPMENT

10' snow plow w/frame and electric hydraulic pump, \$1,100 OBO. (215)654-9237.

1970 Case 680E backhoe, extend-a-hoe, new tires, full cab, good condition, \$11,800 OBO. (610)847-8704.

1980 Gradall type excavator, Detroit diesel up and down, 2-buckets, good condition, \$11,000. 610-562-5188

1984 JD 544C, cab, bucket/forks, excellent condition, \$32,000. (301)371-5500.

1988 Crosley 20-ton tag-along, 10ft snow plow, 9ft snow plow, 1-ton roller. (610)767-2217

1990 Gehl 4610 skid loader w/attachments, 46Hp Perkins diesel. Good condition, must sell. Call Matt, 410/838-4270.

1992 Mobark 290 disc chipper, Cummins diesel, 890 hrs., \$9500. 1988 Eager Beaver, 9DOW trailer, new tires and deck, \$3500. 609-589-3418

1993 JD 310D 4WD, cab, E-stick, VG condition, \$35,000. (301)371-5500.

580 Super E, extend-a-hoe, cab, rebuilt engine, must sell, \$15,000. 717-292-3030

'69 Ford backhoe, new tires, \$7,900. (717)993-5083

8' snow plow blade, \$200 OBO. (215)654-9237.

AC forklift, 6-cylinder gas, 6000 lb. capacity, 47" fork, 30" dual pneumatic tires, good condition. 610-273-3603

AC M100 grader, 12' m-board, S/N M100315, \$2,500. (717)733-3826.

Airflow hooper 5-7 yards, sander, 18hp engine, 8 months old, \$6,900. (609)296-6752.

All Terrain Pettibone, 15 ton crane, diesel, good condition, \$9800. 717/435-2468.

Austin Western road grader w/cab, heater, 4WD, diesel, clean, \$5500. 717/764-1829.

Biau-Knox PF-25 paver, hydraulic extensions, \$6900. Call 717-465-3224 evenings.

Bobcat 763 skid loader, 927 hours, 66" C&I type bucket, front hydraulics, w/backhoe mounts, as is, \$17,500. (717)374-3753.

CAT 953 1988 OROPS, 45% w/c, narrow gauge, clean fresh paint, G.P. bucket, \$48,000. (610)255-0499

Case 1840 skid loader, 700 hrs., closed cab with heater, excellent cond., \$12,900. Call (610)524-3292

Cat 944 rubber tire loader, side dump, good condition, good tires, asking \$10,000. 908-236-2969

Commercial air compressor, 15hp electric, \$1000 OBO. 410/239-0579.

DISTANTLING FOR PARTS: AC HD-7GB loader, good engine, fair w/c, open. ROPS. Call for parts prices.

BALANDA EQUIPMENT P.O. Box 407 RT 29 Palm, PA 18070. 1-800-322-8030

Diesel generator Sullair 35 KW portable unit, excellent condition, \$6,000. English-town, New Jersey, (732)390-8200.

Equipment: Dauphin Co., PA. AD-1974 Tree Farmer Log Skidder Model# C5D w/363 Detroit Motor, 18-4-26 tires, completely gone over machine. 1977 John Deere 310 2WH Backhoe, 3 cyl, good tires. Call (717)469-2518 ask for Keith.

Fiat Allis 7G-B crawler loader, new battery, new teeth, all P&M complete, new paint, very good condition, \$6500. 610/269-0376.

FOR SALE: four dovetail copper kettles with ladles, graduated set in mint condition, manufactured around Civil War. Dauphin County, (717)533-7387.

Forklift Wholesalers 2000 to 92000 Lb. Lifts Available. 70 in Stock. Sale-Rental-Finance w/ Warranty. Chalk Equipment. (410)696-6800.

Hopper type salt spreader for 8-10' dump truck, 6 cu.yd. capacity, \$1200. 301/724-7180.

Hough loader, 4x4 w/cab, Cummins diesel, rear steering, 10' wide bucket, good loader to beat around, \$6000 OBO. 717-732-2257 5pm-11pm

Garrett Turbo Charger, rebuilt, fits Cat 3304, \$700; VG4D Wisconsin motor w/ starter, \$650; Wisconsin 4-to-1 clutch reduction gears, \$450. Pleasant Pequea Power, call Mon. or Thur. 7-7:30am 717/464-4461.

Michigan 125B Articulated Loader, Cummins engine, 4yd bucket, must sell, offer. 215/343-0156.

Michigan rubber 4x4 tire loader, cab, 2 1/2 yard bucket, model 175 Detroit diesel engine, rear steering, \$6500 OBO. 717-732-2257 5pm-11pm

JD 410 backhoe, OROPS, gd. paint, rubber, vg running condition, tight with Tramac 125 Breaker, \$13,000. Call (301)371-9346

JD 450 bulldozer, 6-way blade, w/backhoe, engine clutches brakes rebuilt, good condition, \$14,000. 215/536-9239.

JD 410 backhoe, ROPS, runs good, digs good, loose and oil leaks, \$11,500. (717)844-1433; (717)425-2057 evenings, leave message if no answer.

Huber T-5 roller, 3 drum, \$950 OBO. (717)272-5089.

Jackhammer attachment for backhoe, 900 lb, air operated. (717)564-2337 days, evenings, (717)566-5644.

JD 310A, 3100 hrs, cab, heater, good paint, good rubber, good running condition, \$16,000. 614/886-5082.

Hyster S-40 standard mast, \$1,000. AC 2,000 lb. triple mast and side shift \$1,500. (215)723-0540.

New condition Case 1845C uni loader, high flow hydraulics, w/Lowe 2150 auger, 12"-15" augers, Hanson 72" commercial snowblower, 50 hrs., \$28,000 firm. 717-538-5654

JD 310A backhoe, OROPS, good condition, \$10,000. (717)362-4876.

Moulden super paver, \$10,900. 1984 Eager Beaver, 9-ton trailer, \$2800. 1988 F500 dumping flatbed, \$1200. 1981 Izusu pup diesel, \$500. Richard Santal 717-432-3219

Lull 844 Diesel
35' Reach, New Rubber
\$21,500
717/529-2512
No Sunday Calls

Backhoe Specials

CASE 880L
GET A GOOD DEAL ON THE LEADER
4WD, CAB, EXTENDED HOE,
REASONABLY PRICED
Demonstrator Unit

CASE 578L XT INDUSTRIAL TRACTOR LOADER
Cab 4WD (New), Ready For Snow
5.9% Financing

A. L. HERR & BRO.
Established 1890
Park Ave., Quarryville, PA 17566
(717) 786-3521

1997 Bobcat 873, 73.5 hp. Deutz Oil Cooled Eng., 2300 lb. Lift Cap., 440 hrs., Excellent Condition, Aux. Hyd., Light Pac., New H.D. Bobcat Tires.
\$19,500 OBO
301-790-2385

Case 688 Excavator
S/N 61051274306 w/32" Bucket, 8'10" Stick, 28,000 Lb., Good Condition
\$32,000 \$29,500 (610) 683-5970

1991 NH 785 New Rubber, New Paint, Auxiliary, Winterized, Cab w/Heat.
\$13,500
717/529-2512
No Sunday Calls

Best Buys in Used Equipment
MISCELLANEOUS CONSTRUCTION EQUIPMENT

4 WHEEL DRIVE BACKHOE WITH CAB

Ford Model 455, Cab Heater & Lights, Wobble Stick Hoe Controls, Power Shuttle, 1988, Nice! UT 3867

CASE 580E 4X4 CAB EXTENDAHOE

Cab & Heater, Backhoe Just Rebrushed By Our Shop, Bolt On Loader Bucket Edge, 24" H.D. Trenching Bucket, Very Tight & Clean, Must See To Appreciate. UM 3871

JOHN DEERE 555

Crawler Loader
\$16,500

MODEL 1400B JCB 4X4 TRACTOR LOADER BACKHOE

Cab & Heater, 1986 with 80% New Rear and Front Tires UT 3820
We Provide Future Repair Service Needs As Your Servicing Dealer If Needed

Almost New CASE 580 SUPER L TURBO

Cab Air Heater, Extendahoe, 4 in 1 Loader Bucket, Wobble Stick Controls, Deluxe Cloth Seat
Ask For Dean or Leonard

CASE 1550 DOZER

With Cab & Air and Winch, 10' Straight Blade With Tilt, 168 Gross HP, Approx 15 Ton, 90% New U.C UT 3868

REAL STRAIGHT CASE 580C

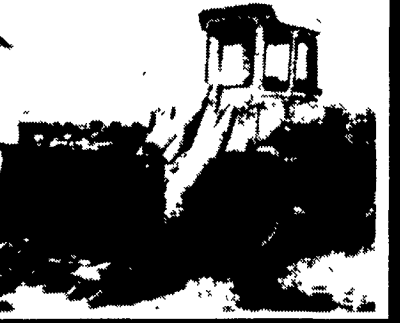
Cab Extendahoe, with Wobble Stick Hoe Controls
\$11,800

CASE 1996 MODEL 590L

4x4 Extendahoe, UT 3889 With Front Aux Hyd., 890 Hrs
\$59,800

JOHN DEERE 644B

Articulated Loader With Cab & Heater, Very Tight 3 Yd. Loader with Heavy Duty Tooth Edge, 25x25 Tires, 1978 Good Solid Machine.
\$24,800



BINKLEY & HURST BROS., INC.
133 Rothsville Station Rd. P.O. Box 0395, Litz, PA 17543-0395 Located 1/2 Mile North of Rothsville
(717) 626-4705 1-800-414-4705 Fax 717-626-0998

