

Excellent Ford Tractors

- TW-25, cab, air, triple remotes, 20 8x38, weights, 4,200 hrs
- TW-20, w/canopy, triple remotes, DP, 4,200 hrs.
- TW-5 II, 4WD, canopy, 20.8x38, 1,900 hrs
- 8600, cab, turbo, 20 8x38, DP, 4,000 hrs
- 8210, cab, air, 4WD, 18.4x38, weights, 4,100 hrs
- 7710 II, cab, air, DP, **SOLD**, 1990, 1,200 hrs
- 7610 II, cab, air, 1990 model, 2,600 hrs
- 7610, DP, dual remotes, 16 9x38, 2,600 hrs
- 7600, DP, dual remotes, 18 4x34, weights, 4,100 hrs
- 7000, DP, 1 remote, 16 9x38, 1975 model
- 6610 II, cab & air, DP, dual remote, creeper, 2,800 hrs
- 6610 II, rollbar, DP, 18 4x34, 1,800 hrs
- 6610, rollbar, DP, dual remotes, 16 9x30, 3,400 hrs
- 6610, DP, 18 4x34, 1985 model, 1,600 hrs
- 5610 II, cab & air, DP, 1989, 1,500 hrs
- 5600, dual remotes, 16 9x34, weights, 3,100 hrs
- 5000, diesel, DP, dual remotes, 18 4x30, 5,400 hrs
- 4630, cab, 4WD, 16x8 shuttle, 1,100 hrs
- 4630, 4WD, shuttle w/Ford ldr, 1,000 hrs
- 4610 II, 4WD, rollbar w/Ford loader, 500 hrs
- 4610 SU, diesel, 14 9x28, 3,200 hrs
- 4600, diesel, 8 spd, w/Ford QT ldr, 3,200 hrs
- 4000 SU, diesel, 14 9x28, 2,300 hrs
- 335, diesel, 8 spd, LPTO, 1 remote w/ldr, 2,800 hrs
- 3910, diesel, 14 9x28 w/Ford QT ldr, 1,400 hrs
- 3610, diesel, 8x4, dual remotes w/Ford ldr, 1,900 hrs
- 3000, gas, 8 spd, PS, 1973, 2,300 hrs
- NH 555, skid loader, 2,700 hrs, local, one owner trade
- JD 2555, hi-low, dual remotes, 1,200 hrs

Equipment

- Case IH 600 blower
- FNH 492 haybine
- Ford 151 plow, 4x18 btms, auto reset
- Sauder 7' snow blade
- 18 4x38 Ford Axle Duals
- Weights to fit most Ford tractors

Ford Loaders

- 7410 QT fits 2910 4WD thru 5030 4WD
- 777D fits 6700 thru 7710 2WD

All Tractors Tested On Our Farms.
Tractors Stored Inside
-Please Call For Appointment-

Burkholder Bros.

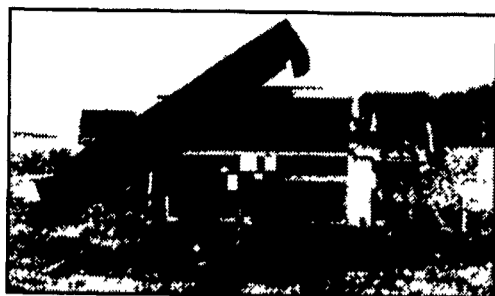
Lebanon, PA 17042
(2 miles West of Schaefferstown)
2 Locations

717-272-2352 717-949-2123

Lloyd Leon
330 Crest Rd. 400 Flintville Rd.

AG PRODUCTS COMPANY, INC.

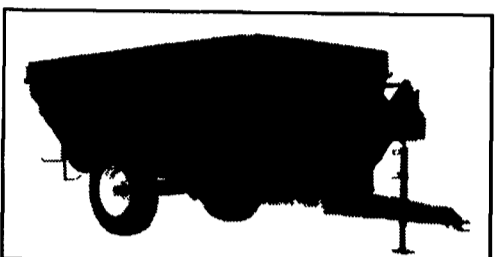
234 Johnston's Lane, Mercersburg, PA 17236
TEL. 717-328-3177



KELLY RYAN Dependable farm equipment since 1945

CENTERLINE BAGGERS

- New & Used • Repair Parts



KELLY RYAN AUGER/MIXER FEED WAGONS

The right size at the right price
Pull-type, truck-mounted or stationary

SILOFLEX™



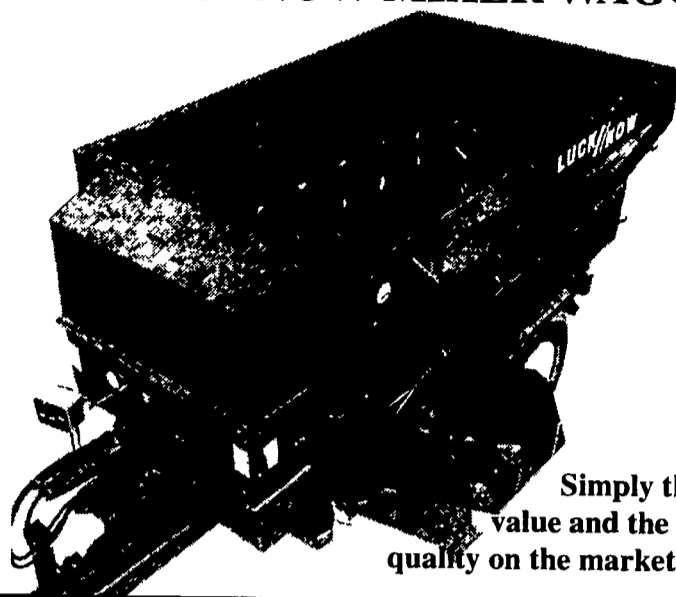
3+ Yrs. Super-Life Silage Bags

- Competitive Pricing
- Early Order Pricing
- Custom Bagging
- Financing Available

BIOTAL INOCULANTS

DIXIE CHOPPER - World's Fastest Mower

THE LUCKNOW MIXER WAGON



Simply the best value and the best in quality on the market today.

Call M.M. Weaver & Son

Leola, PA • (717) 656-2321

Douglas EQUIPMENT & SUPPLY CO.

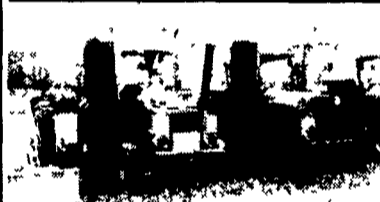
Authorized Dealer For
York Rakes & Power Brooms

CHIPPERS & VACS



- Gledhill Leaf Vac. Ford 4 Cyl. Gas, C&P, Good Cond. \$2,750
- Asplundph Brush Chipper, 6 Cyl. Ford Gas, \$5,500
- Lindig XL12 Chipper, 6 Cyl. Ford, Gas, \$8,500

UTILITY & MOWING TRACTORS



- JD 2030 Diesel, 3 Pt., PTO, WFE, C&P, OROPS, Nice Tractor, \$8,500
- 1987 Ford 6610 Interstater
- 1980 Ford 6600 Interstater
- 1984 Ford 6610 w/Rotary Side Cutter
- 1986 Ford 340
- (2) Case IH 585 w/Side Sickles
- 1986 Case IH 485
- Case IH 385 w/Side Sickle
- All Diesel - All 3 Pt Hitch, PTO, OROPS, PS & WFE

FORKLIFTS

- 88 Gehl 663, AWD, AWS, 6,000 LB., JD Diesel, 37", Very Good Cond.
- TCM FG-25 Forklift, 5,000 LB., Cab, LP, PS, Air Tires

COMPRESSORS

- (2) 1997 IR 185XP CFM, JD Diesel, Low Hrs. Starting at \$8,000
- 1980 IR 175 CFM, JD Diesel, Brakes, Hose Reels, Nice, \$4,900
- 1980 IR - 185 CFM 4 Cyl., JD Diesel, Good Cond. \$4,900
- IR 250 CFM Deutz Diesel, \$5,500

BACKHOES



- Case 580SE, EROPS, Extendo.....Coming In
- JD 310C, EROPS.....Coming In
- 1994 JD 310D, 4x4, EROPS.....Coming In
- (2) 1993 Cat 426B, 4x4, EROPS, Extendo, Turbo.....Coming In
- 1993 Case 580SK, 4x4, EROPS
- (2) (1) 1994 Cat 416B, 4WD, Extendo, EROPS
- JD 9300 Hoe Attachment For 450C

DOZERS

- 1988 Cat D4C 6 Way Dozer, Good UC, OROPS

Many Pieces Not Listed! If You Don't See It - Give Us A Call!

RR2 Box 314A, Kreidler Rd.
York, PA 17403

Interstate 83 • Exit 3

717/428-1517

or 717/741-1797

Fax 717/428-2990

NEW CUSTOM TRAILERS IN STOCK
3-Ton Tilt E/B; 4-Ton Tandems E/B;
20-Ton Tandem A/B

weather guard
TRUCK and VAN EQUIPMENT



All Types New & Used
Snow And Ice Control
Equipment

GRADERS



- Clark 301P Grader, Power Shift, 4x4, Detroit Diesel, EROPS, Heater, 4 Whl. Steer
- Huber Maintainer M650, diesel, wide tires, front blade
- Huber Maintainer 500, front blade, PS \$6,500
- (2) Gallon T400, EROPS, Detroit Diesel, PS, \$11,500/each

GRADALLS & EXCAVATORS



- (2) Gradall 440, Remote, Detroit Diesel Up & Down
- Gradall 660, Remote Diesel Up & Down
- Gradall 440, Remote, Gas Down, Diesel Up
- Kubota KH026 Mini Excavator, OROPS, Diesel, Rubber Tracks, Dozer Blade \$11,500

Euclid R-22 Rock Truck, Cummins Diesel, Manual Shift, Good Cond.

SWEEPERS

- (1) 7' York Power Broom, 3 Pt., PTO
- (1) YBWB 3' York Broom, 5 HP, Gas Engine, Walk Behind

LOADERS

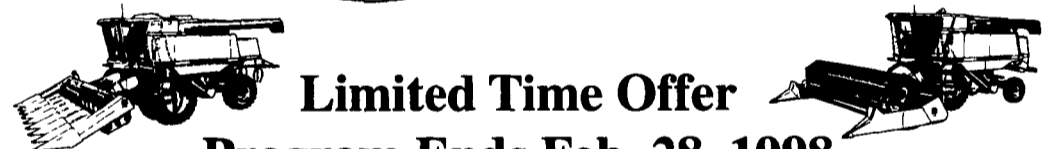


- (2) Cat 920, EROPS, C&P
- Clark 45C, Det. Diesels, EROPS
- HOUGH H-25.....Coming In
- (2) Waldon 5100's, OROPS, Hydrostatic, Perkins Diesel, Solid Tires

Deer Creek Equipment Inc.

Oxford, PA
1-800-255-6567

Whiteford, MD
1-800-551-6567



Limited Time Offer

Program Ends Feb. 28, 1998

6.5% Financing Available

USED COMBINES & HEADERS

6.5% variable rate financing available through John Deere Credit for limited time
Offer expires Feb. 28, 1998.
Prior Sales excluded

ASK US ABOUT OUR "IN FIELD GUARANTEE"

ALL MACHINES BACKED BY DEER CREEK'S 24 HOUR - 7 DAY PARTS & SERVICE

COMBINES

HEADERS

'94 JD 9500 2WD W/Contour Master, Power Boost, 1440 HR (Sep), 1871 HR (ENG)	\$90,000 O	(5) 643 Corn Heads From \$6,500
'90 JD 9500 2WD W/Straw Spreader, 1972 HR (SEP) 2709 HR (ENG)	\$69,000 O	(2) 693 Corn Heads From \$17,500 1 w/Stalk Rolls
'90 JD 9500 2WD, Straw Spreader, New Rubber 2200 HR (SEP) 3200 HR (ENG)	\$55,000 W	(1) 843 Corn Head \$14,900
'94 JD 9500 Side Hill, Monitor, Chopper, 50% Rubber, 900 HR (SEP), 1479 HR (ENG)	\$104,000 W	(5) 920 Flex Head From \$6,500
'96 JD 9500 Side Hill, Chopper, Dial-A-Matic 300 HR (SEP) 500 HR (ENG), Like New	\$130,000 W	(3) 918 Flex Head From \$8,500
'91 JD 9500 4WD, Chopper, Monitor, 17' Auger, 1620 HR (SEP) 2200 HR (ENG)	\$85,000 C	(1) 915 Flex Head \$9,800
'86 JD 7720 4WD, Monitor, Chopper, Dial-A-Matic 3000 HR (SEP) 3800 HR (ENG)	\$45,000 C	(1) 925 Flex Head \$16,500

W=WHITFORD O=OXFORD C=CLAYTON

460 Limestone Road Oxford, PA 19363 1-800-255-6567
720 Wheeler School Rd. Whiteford, MD 21160 1-800-551-6567

