

# USED TRUCKS



97 GMC K-3500 SLE, 7.4 Vortec Eng., Ext. cab 4x4, Dual Wheel At Ac, Am-Fm cass cruise, tilt 4 10 rear, Red 29,000 miles

\$25,900



96 Ford F350 Crewcab 4x4 5.8 F-1 AT O/D PS PB AC PW PDL AM/FM Stereo 37 000 Miles

\$23,900

## MARTIN'S AUTO SALES

1025 W. Main St. New Holland, PA 17557  
(717) 656-6621

# LEFEVER BROS. CHEVROLET GEO

406 U.S. Route 15 North, Dillsburg PA

Quality Dealer Since 1921 717-432-9611

### 1997 CHEVY C SERIES

33,000 GVW Dump Chassis, 230 Hp CAT, 5 speed, 2 speed

2 IN STOCK



### 1998 CHEVY CAB & CHASSIS

CAT 316, 185 HP; 6 Speed 259" Wheel Base; 25,950 GVW



### 97 CHEVY C-60

Low Pro 10' Gallion Dump 25,950 GVW, 366 Gas

### 1991 Chevy Kodiak Septic Pumper Truck

Cat. diesel, 215hp, 2,300 gal tank, 5+2 speed; 33,000 GVW; Air brakes

\$28,500

# KELLER BROS.

(Buffalo Springs) Lebanon, PA

717-949-2000 or 1-800-363-2767

## HEAVY DUTY & LIGHT DUTY TRUCK CENTER



1987 FORD F150 CUSTOM Clean Truck Local Trade



95/96 LX WINDSTAR Low Miles, Quad Seats, Loaded, Dual A/C 2 IN STOCK



1998 FORD E250 H.D. CARGO VAN 5.4 L, AT, Work Bin



1991 AEROSTAR E.B. Dual A/C, Loaded, 4x4, Low Miles #3226



1987 FORD F150 4x4 V8, 5-Spd, PS, PB, Very Clean



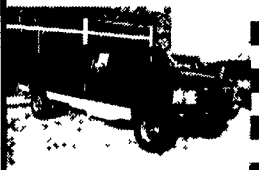
1995 CHEVROLET 1500 SUPER CAB, 4x4, AT, V8, Silverado Pkg., PW, PL, T, C, Cass



1997 FORD F350 CREW CAB 4x4, XLT 3 IN STOCK



1997 FORD F250 Heavy Duty Diesel, Super Cabs (3 In Stock)



1997 FORD F350 XL, 4X4 Heavy Duty 7.3 Turbo Diesel 4 IN STOCK



1985 LINCOLN TOWN CAR 39,700 Orig. Miles Local Trade \$6,995



1989 FORD F150 4X4 AT, V8, XLT \$8,995



1995 FORD EXPLORER XLT 4x4, 4 door, Low Mileage



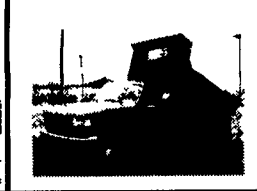
1994 FORD EXPLORER XLT V6, Auto, A/C, PW, PL, Leath Int, 4x4



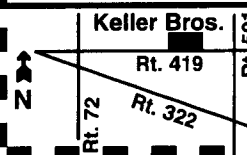
1994 CHEVY K1500 SUPERCAB 4X4 Silverado, AT, V8, Local Trade, PW, PL, T, C, Cass, Alloy Wheels



1995 FORD F350 4x4, DRW Dump Truck 8' Box, 460 V8, AT, Only 15,000 Miles



1990 FORD RANGER XLT Local Trade, Clean \$4,450



**KELLER BROS. FORD HAS SERVED CENTRAL PENNA. AREA FOR MORE THAN 75 YEARS.**

Mon.-Fri. 9-9; Sat. 9-4 Most Used Vehicles Carry a 3 year Unlimited Mileage Warranty

# Huntingdon Equipment

Rentals Available

GOOD USED EQUIPMENT

Huntingdon Valley, PA • 215-672-9667 • 1-800-543-3833 • Eddie



Vermeer M-470 Trencher with backhoe This is one of six units we have all ready to work Starting at \$4,500.



Flat Bed - Diesel 8 2 - 5 speed auto with 2 speed rear GVW - 26,000



1986 Chevy 5 Man Cab Dump, 3208 Cat - 5/2, Air Brakes Dump with Lift Gate Dump 14' Long, GVW 34,000 - pounds



Material Handler Bucket Truck - 42 Bucket with Jib 1981 and 1982 Diesel Engine - Auto or Stick - Special \$9,995



Stake Body Boom Truck - 45' Height 14,000 lbs cap 1985 GMC - Gas - 5 Speed - 2 Speed Rear



One of Two - 1987 Ford F-350, 460 Eng, 4 spd, great for pulling trailers

## DIGGER DERRICKS/AERIAL BUCKETS/UTILITY EQUIPMENT

36

### REAL ESTATE

10 Acre Farm, Dorothy, NJ, w/established hydroponic greenhouse business, 4BR Cape Cod, garage and large barn. \$175,000. 609/476-2496 Tue-Fri.

1 1/2 acre wooded building lot on a dead end street in Elanco School district, Lancaster county. Asking \$49,900. (717)445-4065

159 Acres, 100 acres wooded, 50 acres cleared. Little Cove area of Franklin Co. STRA-WOOD REALTY/DAVE MCLUCAS 717/597-0234 or 717/328-5629.

189 acres near Harrisville, NY, St. Lawrence Co. All wooded, natural pond, \$52,000. Cumberland Co, evenings, (717)258-0944.

34.5A Perry Co., near Ickesburg, borders Buffalo Stream, parked & approved, secluded, great hunting and fishing. Mobiles restricted, \$58,000. 717-438-3115.

4.65A broiler farm, Lancaster County, PA. 78,000 birds, contracted. (1) new tunnel ventilated house, (1) 2-story remodeled house, generator. 4BR, 3-bath, 2-car garage home. Plus 3-car garage, tennis court, 2-unit apartment house, \$525,000 Neg. Poultry \$ + Rental \$ = Excellent Income. 717-397-8249

### FLORIDA LAND

4 Acre wooded building lot midway between Jacksonville & Daytona Beach at Satsuma. Public road along 2 sides. City gas adjacent. Subdivision possibilities. 3 miles to St. John's River. Will consider a trade for another building lot in Central PA.

717/286-6060 after 6pm