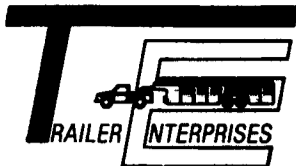
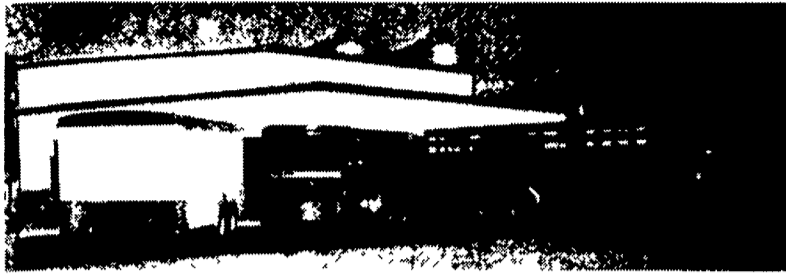


"Revvin' to take care of ALL your trailer needs."



HAS BUILT A REPUTATION



United Expressline 8x16 Cargo Bison 616HPT **Eby** Aluminum 7x20 Gooseneck

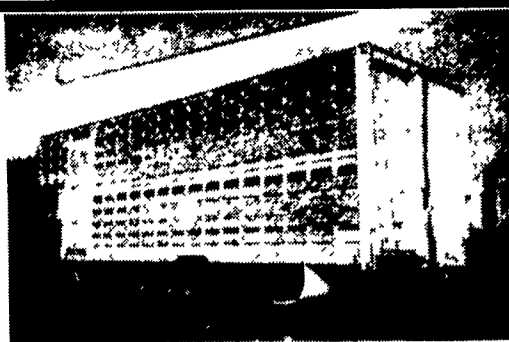
NEW & USED: STOCK - HORSE - CARGO - INDUSTRIAL - UTILITY - CAR HAULERS

Trailer Enterprises is here to serve you. We are a full service facility providing YOU with the very best service available in the industry!

TRAILER ENTERPRISES, INC.
13121 MAUGANSVILLE ROAD
HAGERSTOWN, MD 21740

Just give us a call at (301) 791-5343.

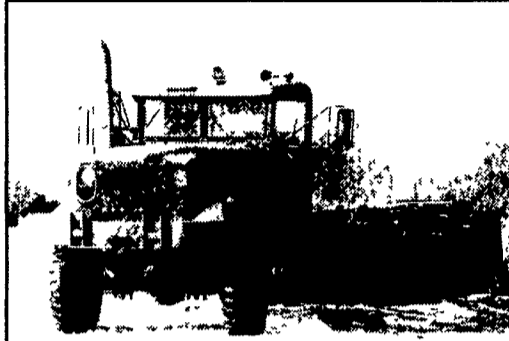
Hours: 8AM-5PM Monday-Friday
9AM-12 Noon - Saturday



24' Eby Cattle Body Rear Ramp & Roll Door, Side Roll Up Door, Extension Over Cab, Sill For Upper Deck, Like New!

(717) 354-3199

8x8 INTERNATIONAL



All Wheel Drive 6-71 Detroit Diesel, 5 Speed Manual Transmission, 2 Speed Transfer Case Power Steering, Air Brake Double Frame, 14 New 1200/20 Tires, Hard Top PTO With Two Hydraulic Pumps. 23 Ft. Behind Cab Fully Reconditioned - \$14,950.

Call St. Marys, PA.
(814) 834-1018

Load Boss Trailers



The Best Quality Dump Around!!

Heavy Duty!

Wholesale Prices to Public

- No Dealers -

6x10 - 7,000 GVW.....**\$2,795⁰⁰**

6x10 - 10,000 GVW.....**\$2,995⁰⁰**

Financing Available or VISA/MC

(814) 623-8696

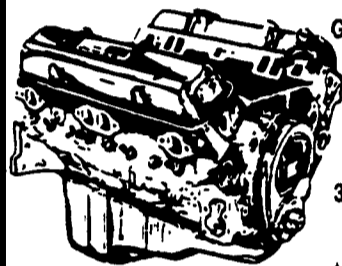
(814) 623-9696

Anytime Except Sundays

JONES

Goodwrench **ENGINE**

HEADQUARTERS



GM GOODWRENCH 350 V8 1973-85
Part Number 10067353
New Engine - Not Rebuilt
36 Month or 50,000 Mile Warranty

New Engine - No Core Fee **\$1,199⁰⁰**

WE'LL MATCH ANY COMPETITOR'S PRICE!

6.5L GOODWRENCH DIESELS From **\$3,175**

Call 394-0711 for prices on other New or Remanufactured Goodwrench Engines. 2.5 Liter thru 454 cid. Gas and Diesel

Chevrolet - Pontiac - Olds - Buick - Cadillac - GMC

JONES GM PARTS CENTER

1335 Manheim Pike, Lancaster, PA 17604
Easily Located on Rt. 72 Just off of Rts. 283 & 30
Hours: Mon-Fri 7:30 a.m. - 9 p.m. Sat 7:30-3
(717) 394-0711



HOSTETLER

Truck Bodies & Trailers
717-667-3921

Milroy, PA - Located between Lewistown And State College on Rt. 322 in PA.



Skid Loader Trailers, 82" Between the Fenders, 10,000# GVW
14' Long **\$2,485**
16' Long **\$2,595**
18' Long **\$2,780**



LEFT OVER 1997 MODEL
6' X 16' Montz Livestock Trailer, 7000# GVW, Divider Gate
Was \$3350 NOW **\$3195**

SALES OFFICE OPEN MON. - SAT. 7:30 TO 5:00



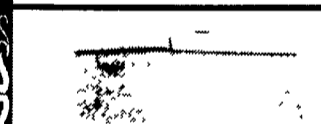
New Designed Corn Pro Bumper Pull Livestock Trailers, Rubber Torsion Axles, Treated Pine Floor
6'x16' 3500# Axles **\$2,280**
6'8" Wide x 16' Long 3500# Axles **\$2,575**
6'8" Wide x 16' Long 6000# Axles **\$3,895**



Montz Slant Load Horse Combo Trailers, Rubber Torsion Axles, Swing Open Divider and Dressing Room Wall
6'x13' 2 Horse **\$3,490**
6'x16' 3 Horse **\$3,830**



Tool Boxes, 36"x18"x18" **\$147**
24"x18"x18" **\$132** 42"x18"x18" **\$155**
30"x18"x18" **\$140** 48"x18"x18" **\$163**



Pace Rallye Trailers
5'x8' **\$1,890**
6'x12' **\$2,150**



Hostetler 7'x12' Contractor Dump Trailer, Dump Truck Body, with Truck Scissor Hoist, 10,000# GVW, 30" Front with 20" Sides & Tailgate, Heavy Duty **\$5,695**



Grain Bodies, Removable Sides, anous Rears Available, With or Without Hoist 16' w/40" Sides Not Installed **\$2,530**



Single and Dual Wheel Pick Up Flatbeds, Bulkhead, Coutside Pockets, Rear Skirt, With or Without Gooseneck Compartments Starting at **\$770**

Largest Stocking & Selling Extended Cab GMC Dealer in 7 States

JONES BEST BUY 4X4'S TRUCKS

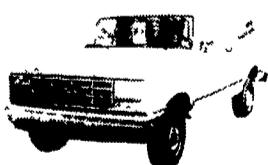
PONTIAC HONDA GMC TRUCK

1335 Manheim Pike, Lancaster

Prices based on straight sale. Tax & tags extra. Trades accepted at actual cash value. Must present this ad at time of purchase for sale price.

JONES

717-394-0711



'87 FORD F150 4x4
Auto, V8, PS, #7662
Was \$7,995
SALE **\$5,800**



'95 GMC SONOMA X CAB 4X4
AC, V6, 5 SPD., SLS, #7619, WAS \$17,400
SALE **\$14,500**



'96 GMC SUBURBAN 4x4
SLE, AT, AC, V8, 8,000 Miles #7715, Was \$31,400
SALE **\$29,400**



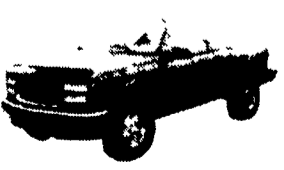
'96 Chev Crew Cab Dually
AT, AC, 454 Silverado, 9,000 Miles, #7686, Was \$25,995
SALE **\$24,000**



'94 GMC K25 4x4
3/4, AT, AC, 350, SLE #7718, Was \$17,900
SALE **\$14,400**



'96 CHEV S10 X-CAB
V6, AT, AC, LS, 3RD Door #7720, Was \$14,800
SALE **\$12,100**



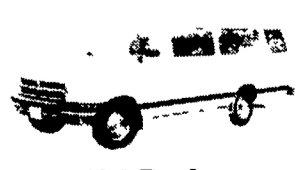
'95 GMC K15 4x4
5 Spd, Z71, 350, SLE #7583 Was \$20,700
SALE **\$16,900**



'94 CHEV S10 BLAZER 4x4
4 Dr., AT, AC, V6 #7607 Was \$13,400
SALE **\$8,800**



94 CHEVY SUBURBAN 4x4
AT, AC, 350, Silverado, 8 Pass., #7604, Was \$22,750
SALE **\$18,500**



'94 Dodge 15 Pass Van
AT, AC, V8, Clean, #7672, 220,000 Miles was \$9,975
SALE **\$5,900**