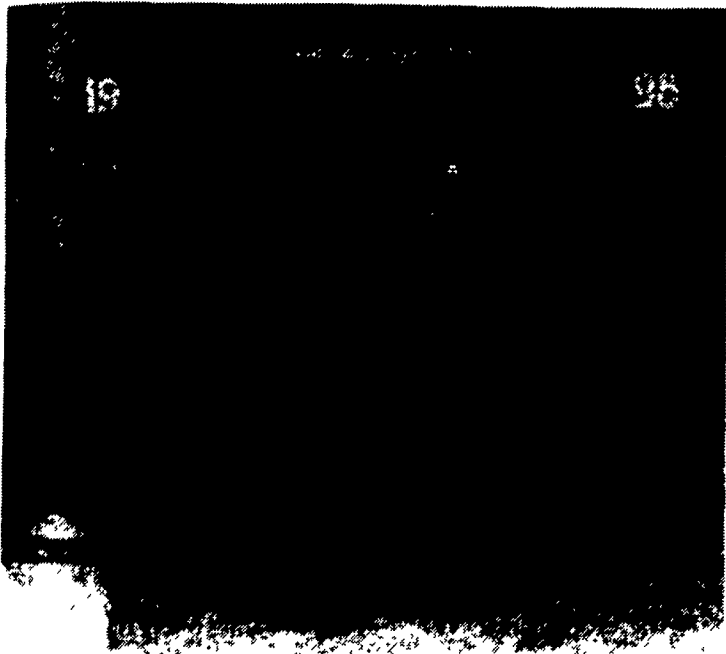


# It Took 20 Years, But Halls Finally Get Swine Supreme

(Continued from Page B18)

by the Innersts, GBI 7 MS Sequel Clare (S: BDB5 Clarence 4-9, D: GBI Miss Spencer 9-2). The reserve looked "good in the underline," said Bressner.

**Chester White**  
A January Chester White gilt that was "second to no state" gleamed in Bressner's eyes. Bressner selected the January



Berkshire champion at the Farm Show went to Greg Innerst.

gilt shown by Ken Wetzel and Family, Rossiter, as supreme champion of the Open Swine Show.

Bressner said the Chester White female was an "impressive brood sow" and that exhibitors and audience wouldn't be able to see quality that compares to it in "any state event," he said.

Bressner chose the gilt, KWF17 Angie 117921013 (S: SCFH6 Snowman, D: KEW16 Angie), exhibited by Wetzel, calling it a gilt of quality that "you just won't find (anywhere else)."

The January gilt looks like it could be the most productive at this point in her life, Bressner told the exhibitors.

The reserve of the class was also shown by Ken Wetzel, the second place January gilt, a gilt "that can generate more for Chester White hogs." The reserve was KWF17 Ms. Tonto Gonzal 117922008.



Reserve Berkshire champion at the open swine show went to Greg Innerst.

## Duroc

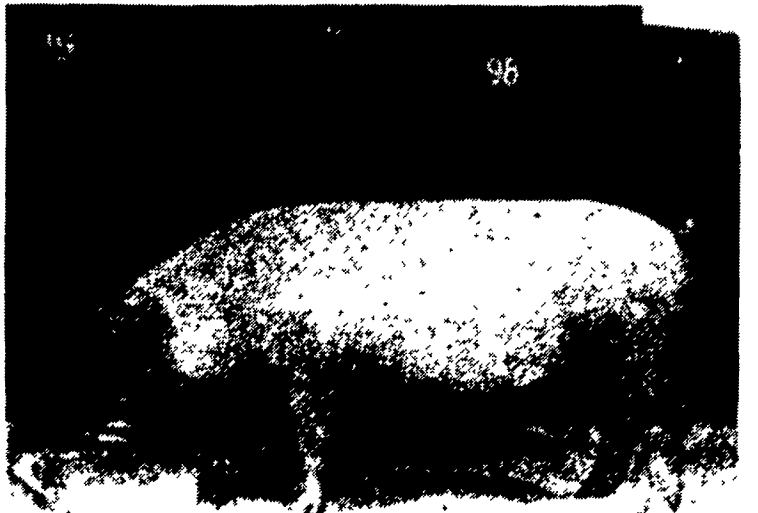
Bressner selected a March gilt exhibited by David C. Holloway, Glen Rock, as champion Duroc.

Bressner, who noted that he chose a Duroc supreme champion at the Farm Show about eight years ago, selected DCHH7 Ms Strongbox (S: SDH5 Showtime, D: DCHH5 Ms Strongbox).

One of the largest classes of swine, with 16 head, came out of the February gilt class in the Duroc breed.

The gilt, according to Bressner, is an "excellent female" that can "go anywhere," he said. "Our representative can go to national competition and do well."

Bressner chose the second place gilt in the March class, exhibited by Clyde McConaughy of Mahoning Creek Farms, Smicksburg, as reserve. That gilt was CWM7 MS Tool Box 182054001 (S: CWM6 HP Power Play 6-9, D: CWM5 MS Tool Box 21-6).



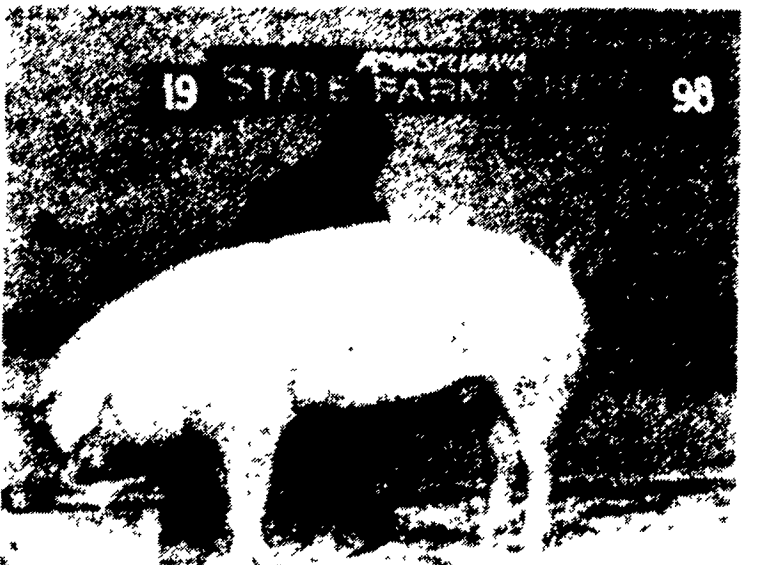
Chester White champion was exhibited by Ken Wetzel.

## Hampshires

The gilt with the "most extension in the body and length of body," a January gilt, was selected champion Hampshire.

The champion was exhibited by Jeff Bomgardner of Blue Mt. View Farms, Annville, BMV7 Martha (S: JSE5 Extension 73-5, D: JRF5 Martha 15-10).

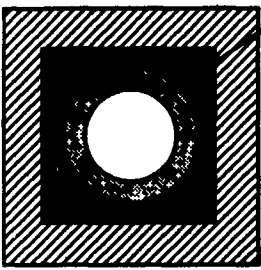
Bressner, who was trying to decide between the February gilt, the second January gilt, and the second February gilt finally chose the second January gilt for reserve. He called it the "biggest-framed, leanest gilt of the three." The



Reserve champion Chester White went to Ken Wetzel.

(Turn to Page B20)

... For New Construction Why Not Examine The "Chimtek Difference."



Chimtek Inner Liners are made of volcanic pumice and high-temperature refractory cements. Its round shape provides even temperature inside flue and contributes to efficient flow of smoke and flue gasses. The volcanic pumice in Chimtek liners adds considerable insulating value.

All three chimneyliner systems distributed by DS Machine Shop are of super design, super performance, and super value. With all their advantages these chimney systems often cost no more than ordinary chimneys. Write or call us for more specific liner information.

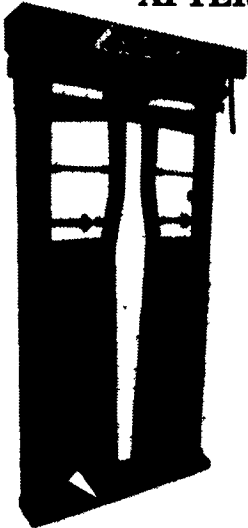
**D.S. Machine Shop**  
**Stoves & Chimneys**

238B Old Leacock Road, Gordonville, PA 17529  
717-768-3853

PAUL B.

**Zimmerman**  
INC

**AUTOMATIC HEADGATE**  
FINISHED WITH BAKED ON TOP GRADE  
POLYESTER TGIC POWDER COATING  
AFTER FABRICATION.



### FEATURING:

- Full roof cover for outdoor protection
- Heavy duty latch for positive locking
- Double linkage for extra stability
- Control handle operated from either side
- Fast, easy adjustments to match animal size and neck size from 5" to 7"
- Handle to manually operate for slow or horned cattle

**PAUL B. ZIMMERMAN, INC.**

Call or Write For  
Additional Information  
And Your  
Nearest Dealer

Hours  
Mon. Thru Fri.  
7 to 5

295 Woodcorner Rd.  
Lititz, PA 17543-9165  
1 Mile West of Ephrata  
717-738-7365

## Advanced Agronomics...

For the Grower who wants problems solved,  
not textbook rhetoric.

Does your current cropping program address the following?

- 1) How to reduce the impact of weather stress?
- 2) Why your crops are only yielding 30% of genetic potential?
- 3) Why yield ceilings are set within 15 - 20 days of germination?

Call (717) 786-4075 today to discover how advanced technology can increase your profits, or plan to attend a meeting at:

**Marvin Zook Farm**  
5640 Limeville Rd., Gap  
January 23, 1998 12:30 p.m.

- Pesticide Points (2 core and 2 category)
- Door Prizes !!!!!! Reservations are encouraged but not required.
- Call *Advanced Agronomics* @ (717) 486-4075 with questions

