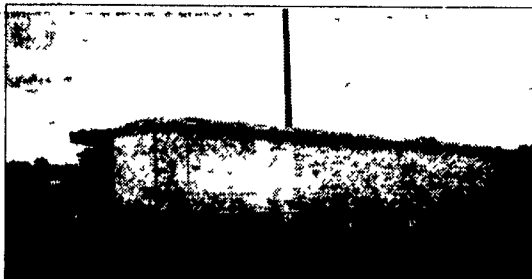




1986 International S1954
 DT 466, 210 hp. 5+2, AB, PS, New paint, Renewed engine, with NEW 16' Aluminum Scott Grain Body, 1 1/4" extruded dry freight floor, 50" sides, 15 ton hoist. 35,000 GVW, new clutch, overhauled trans.
\$19,500. Other Units Available
Also 10-Wheelers
Sunny Acre Sales
 RD 2, Box 266, Tyrone, PA 16686
 814/742-7303



1993 Timppe Hopper Trailer,
 Excellent Condition, Aluminum Wheels, Air-Ride Equipped, Lots of Lights, Brakes & Tires 70%, Tarp - 1 Year Old.
Derwood Martin
 (717)530-5430

BICYCLE CARRIERS
 SAVE \$\$
 FREE UPS
1-800-WEAVER-D
1-800-532-8373

MOTORS
 New & Rebuilt
 350, 366, 427, 454
 6.2 Diesels
 Rebuilt & Used
 Will install
 Roll Back Service,
 (at cost)
717-762-6415

1987 Ford F-350
 1 ton tank truck, V-8, 4 spd trans, 550 gal. tank, mechanical agitation, 8hp Kohler electric start engine, 2020 Bean pump, twin electric hose wheels w/400' of 1/2" hose on each, well maintained, no rust, good rubber, top condition mechanically \$5,000
 Truck can be sold w/out tank, just cab & platform \$4,000
1986 Toyota Pick-Up Truck
 4 spd., 4 cyl., radio \$1,000
Pro-Grass Inc.
 Timonium, MD
 (410) 561-1717

HOSTETLER
Truck Bodies & Trailers
717-667-3921
 Milroy, PA - Located between Lewistown And State College on Rt. 322 in PA.

Skid Loader Trailers, 82" Between the Fenders, 10,000# GVW
 14' Long **\$2,495**
 16' Long **\$2,595**
 18' Long **\$2,790**

LEFT OVER 1997 MODEL
 6' X 16' Moritz Livestock Trailer, 7000# GVW, Divider Gate
 Was \$3350 **NOW \$3195**

Moritz Slant Load Horse Combo Trailers, Rubber Torsion Axles, Swing Open Divider and Dressing Room Wall
 6'x13' 2 Horse **\$3,490**
 6'x16' 3 Horse **\$3,830**

Tool Boxes, 36"x18"x18" **\$147**
 24"x18"x18" **\$132** 42"x18"x18" **\$155**
 30"x18"x18" **\$140** 48"x18"x18" **\$163**

SALES OFFICE OPEN MON. - SAT. 7:30 TO 5:00

New Designed Corn Pro Bumper Pull Livestock Trailers, Rubber Torsion Axles, Treated Pine Floor
 6'x16' 3500# Axles **\$3,350**
 6'8" Wide x 16 Long 3500# Axles **\$3,575**
 6'8" Wide x 16 Long 6000# Axles **\$3,895**

Pace Rallye Trailers
 5'x8' **\$1,890**
 6'x12' **\$2,150**

Hostetler 7'x12' Contractor Dump Trailer, Dump Truck Body, with Truck Scissor Hoist, 10,000# GVW, 30" Front with 20" Sides & Tailgate, Heavy Duty
\$5,695

Grain Bodies, Removable Sides, various Rears Available, With or Without Hoist 16" w/40" Sides Not Installed
\$2,550

Single and Dual Wheel Pick Up Flatbeds Bulkhead, Coutside Pockets Rear Skirt, With or Without Gooseneck Compartments Starting at
\$770

89 K3500 Ext. Cab Chevy 4x4
 15,000 GVW - 4x4 - AT, PW, PD, AC, Cruise, Running Boards, 76K, (2) 18" x 36" Merritt Alum. Tool Boxes, 10 ft. Steel Bed, 4ft. Rack Over Roof, Steel Side Boards Are Ramps, Gooseneck Hitch, Pintle Hitch, Adjustable Ball Hitch.
\$16,900
717/435-5353

PHONE 717-274-2000 **RTE. 422 WEST LEBANON, PA** **Business Hours Mon.-Fri. 9-9 Sat. 9-4**
Toll Free 1-800-650-1420 **(Across From Lebanon Valley Mall)**
CAR VILLAGE
HEAVY DUTY TRUCKS

THIS IS ONLY A PORTION OF OUR HUGE INVENTORY

<p>4x4 DIESEL SUPER CAB 94 CHEVY K3500 Very Clean & Nice To Look At, 6.5 Turbo Diesel, AT, A/C, Tow Pkg, Only 54,000 Miles \$21,900</p>	<p>'96 CHEVY K3500 4X4 SUPER CAB DUALY Silverado, High Output 6.5 Turbo, AT, A/C, 4:10 Gears, Chrome Simulators & Lots More, New TK Warranty \$28,900</p>	<p>CREW CAB DUALY 96 CHEVY Like New, Only 7,915 Miles, Remaining New Tk Warranty, High Output, 6.5 Turbo Diesel, AT, A/C, Power Everything, 4:10 Gears, Heavy Duty Tow Pkg.</p>	<p>FARM FLATBEDS '84 Ford F350, '85 Chevy C-30 Run Well, Call For Details</p>	<p>HEAVY DUTY FARM TRUCK 89 FORD F250 4X4 Nothing Fancy, Just Good V8, Auto, A/C, Lock Out Hubs, Dual Tanks, Tow Hitch, Vinyl Seat & Floor, Runs Great \$8,900</p>
<p>4x4 1 TON PICKUP FORD F350 XLT Powerstroke Turbo Diesel, 5 Sp, A/C, Limited Slip 4:10 Gears, Dual Tanks, Factory Warranty</p>	<p>4X4 CREW CABS Single Rear Wheel Powerstroke Turbo Diesel, AT & 5 Sp., Loaded XLT's & Workstyle XL Call For Details</p>	<p>96 FORD F250 4X4 heavy Duty 3/4 Ton Power Stroke Turbo Diesel AF, A/C, 4:10- Gears Aluminum Wheels, Only 12,000 Miles</p>	<p>CATTLE HAULER 91 FORD F350 7.3 Diesel, 5 spd., Eby Aluminum Body, Rear & Side Doors, Loading Ramp</p>	<p>RELIABLE 96 FORD F250 4X4 Diesel Power, 4 Sp Heavy Duty 3/4 Ton, Lock Out Hubs, Runs & Drives, Real Nice</p>
<p>4x4 WORK TK, 95 FORD F250 XL Heavy Duty 3/4 Ton, Powerstroke Turbo Diesel, 5 Sp. Trans., Dual Tanks, Vinyl Seat, Vinyl Floor, Extra Extra Clean, Only 31,000 Miles, New Tk. Warranty Remaining</p>	<p>4X4 DIESEL SUPER CAB 96 FORD F250 XLT A Nice One, Only 23,000 Miles, Auto, Loaded, XLT, Aluminum Wheels, 40/20/40 Seat</p>	<p>'97 DODGE 3500 SLT LARAMIE 5 Sp. Dually, Awesome Tow Machine, Cummins Turbo Diesel, 5 Sp., A/C, Tilt, Cruise, Heavy Duty Frt. & Rear Dana Axles, 4:10 Gear, New TK</p>	<p>480 POWERHOUSE 92 FORD F250 SUPER CAB 4X4 Ready To Pull Those Heavy Loads, Fuel Inj. V8, AT, A/C, Capt. Chairs, It's All Muscle, 59,000 Miles \$16,900</p>	<p>95 DODGE 2500 4X4 SLT LARAMIE Cummins Turbo Diesel, AT, A/C, Tilt, Cruise, Brand New Tires, Very Clean \$19,900</p>
<p>Chassis Cab 96 4x4 F350 Powerstroke Diesel, AT, A/C, Sht 137 WB</p>	<p>5 SPD. DIESEL 4X4 95 FORD F250 XLT Strong Diesel Power, Heavy Duty 3/4 Ton Lock Out Hubs, Dual Tanks, A/C Only 66,700 Miles, Nice Driver, Clean Tk</p>	<p>94 FORD F350 XLT 5sp., Crew Cab, Hard To Find, Good To Own, Turbo 7.3 Diesel, 5sp A/C, Tow Pkg., Dual Tanks, Real Clean, 50,000 Miles</p>	<p>5 SP. POWERSTROKE 96 FORD F250 4X4 Heavy Duty 3/4 Ton Beautiful Tk, Only 25,000 Miles, Powerstroke Turbo Diesel, 5 Sp, A/C, 40/20/40 Seat, Aluminum Wheels</p>	<p>5 SP DUALY, 94 CHEVY 4 WHEEL DRIVE Great Pulling Tk, High Output, 6.5 Turbo Diesel, H.D. 5 Sp., A/C, Gooseneck & Class 3 Hitch Only 40,000 Miles</p>
<p>95 FORD SUPER DUTY Powerstroke Diesel, 5 Sp, Sht 137 WB</p>	<p>BOX TRUCKS 97 FORD SUPER DUTY 95 1/2 ISUZU 95 FORD E-350</p>	<p>4x4 DIESEL 90 FORD F250 SUPER CAB 7.3 Diesel, AT, A/C, Captain Chairs, Dual Tanks, Lock Out Hubs, Needs Some T.L.C. \$9,500</p>	<p>4X4 - 97 FORD F350 CREW CAB DUALY Impossible To Find - But We Have One! Like New, Only 3,000 Miles, Powerstroke Turbo Diesel, AT, Every Option, Alcoa Aluminum Wheels</p>	<p>4x4 DODGE CLUB CAB 96 2500 4X4 Heavy Duty 3/4 Ton Cummins Turbo Diesel, AT, A/C, SLT Laramie, 26,000 Miles</p>