

Carlisle Livestock

Carlisle, Pa.
January 6, 1998

SLAUGHTER CATTLE: STEERS, NO HIGH CHOICE AND PRIME OFFERED; CHOICE 65.00-67.00; SELECT AND LOW CHOICE 62.25-64.75; SELECT 55.50-62.00; HOLSTEINS CHOICE 55.00-58.50, SELECT 50.00-54.75, COMMERCIAL 40.00-48.25; HEIFERS CHOICE 62.25-65.00, SELECT 60.00-62.00, COUPLE 50.00-59.00.

COWS: BREAKING UTILITY AND COMMERCIAL 35.00-42.50, CUTTER AND BONING UTILITY 33.00-39.00, CANNER AND LOW CUTTER 27.00-32.75, SHELLY 26.00 AND DOWN, BULLS 36.25-44.00.

FEEDER CATTLE: STEERS MED. AND LARGE #1 400-850 LBS. 60.00-76.00, #2 400-850 LBS. 56.00-59.00; HEIFERS MED. AND LARGE #1 400-850 LBS. 60.00-72.50, #2 400-850 LBS. 51.00-59.00; BULLS 600-850 LBS. 52.00-58.00; HOLSTEINS/DAIRY TYPES 40.00-53.50.

CALVES: RETURNING TO THE FARM, ACTIVE! HOLSTEIN BULLS #1 90-130 LBS. 96.00-115.00; HOLSTEIN HEIFERS #1 80-100 LBS. 67.50-102.50; BEEF X BULLS TO 97.50; BEEF X HEIFERS TO 67.50.

SWINE: DEMAND WEAK! HOGS US#1-3 31.50-33.00, 290-330 LBS. 29.50-31.00; BOARS 16.50-24.00; SOWS

300-600 LBS. US#1-3 23.75-33.00, THIN/WEAK/ROUGH TO 23.00.

GOATS: BY THE HEAD, LARGE NANNIES AND BILLIES 55.00-127.50, FANCY KIDS 55.00-69.00, SMALL/THIN KIDS TO 43.00.

LAMBS: CHOICE 40-60 LBS. 147.50-165.00, GOOD AND CHOICE 60-80 LBS. 102.50-135.00, GOOD AND CHOICE 80-130 LBS. 92.50-110.00.

SALE EVERY TUES. 5:30 P.M. FOR RABBITS, POULTRY AND EGGS, 6:30 P.M. FOR LIVESTOCK BEGINNING WITH CALVES.

NEXT SPECIAL FED CATTLE SALE TUES., JAN. 20.

NEXT STATE GRADED FEEDER PIGS ALES FRIDAY, JAN. 9 AND FRIDAY, JAN. 23.

EARLYBIRD PENS FOR YOUR CATTLE, COWS AND HOGS CLOSE EVERY TUES. AT 2 P.M. FOR PREMIUM PRICES USE THESE PENS.

PEN LOTS OF CATTLE ARE SOLD IN ORDER RECEIVED.

Frederick Livestock Auction

Frederick, Md.
January 5, 1998

Report Supplied by Auction

SLAUGHTER COWS: 125 HEAD, ACTIVE! UTILITY 35.00-40.00; HIGH DRESSING 40.50-42.75; CANNERS 31.00-35.00; SHELLY 30.00 DOWN.

BULLS: YG#1 42.50-45.50; 11110 LB. AT 54.00; YG#2 AT 40.00.

FED STEERS: LOW CHOICE HOLSTEINS 1300-1550 LBS. 56.00-57.75; 1 1635 LB. AT 49.00.

HEIFERS: DAIRY CULLS TO 41.50. VEAL CALVES: 275 HEAD. 1 CHOICE 370 LBS. AT 69.00; 1 GOOD 240 LBS. AT 59.00; CULLS 85-110 LBS. 30.00-38.00; 60-80 LBS. 25.00-34.00.

FARM CALVES: HOLSTEIN BULLS, PRICES HIGHER! #1 95-120 LBS. 95.00-115.00; 90-95 LBS. 50.00-90.00; 80-85 LBS. 40.00-80.00; HOLSTEIN HEIFERS #1 90-120 LBS. 95.00-117.00; #2 80-95 LBS. 40.00-85.00; BEEF X BULLS 40.00-87.00.

BUTCHER HOGS: 41 HEAD, PRICES LOWER. US#1-3 235-270 LBS. 31.00-33.00; 200-225 LBS. 30.00-32.50; 1 280 LB. AT 35.50.

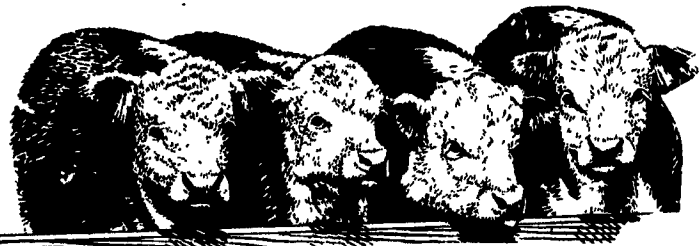
SOWS: 1 540 LB. AT 30.00. STOCK CATTLE: STEERS 400-700 LBS. 57.00-68.00.

HEIFERS: 500-700 LBS. 57.00-60.00; HOLSTEINS 250-400 LBS. 59.00-81.00.

BULLS: 1 HERFORD 500 LBS. AT 60.00.

SHEEP: BUCKS 225-280 LBS. TO 31.00.

GOATS: 1 MED. BILLY AT 57.00. PIGS AND SHOATS: BY THE HEAD, 1 LOT 30 LBS. 23.00; 1 LOT 80 LBS. 36.00.



Some Markets Not Available Due To Early Press Deadlines

New Wilmington Livestock Auction
NEW WILMINGTON, PA
January 5, 1997

CATTLE 125... PDA ..Compared with last week's sale...slaughter cows .25 to 2.00 lower. SLAUGHTER STEERS: few Select 55.50-59.25. HEIFERS: few Choice & Select Holsteins 1355/1520 lbs. 51.00-55.50. COWS: Breaking Utility and Commercial 33.00-38.75, one 39.50, Cutter and Boning Utility 27.00-35.00, Canner and Low Cutter 24.00-28.50. Shells down to 17.00. BULLS: one Yield Grade No. 1 1460 lbs. 44.00, few No. 2 1145/1755 lbs. 32.00-39.50. FEEDER CATTLE: STEERS: few Medium Frame No. 1 & 2 205/610 lbs. 48.50-58.00; HEIFERS: few Medium Frame No. 1 270/480 lbs. 45.50-59.00, Medium & Large Frame No. 2 240/500 lbs. 33.00-41.00. CALVES 150...VEALERS: Standard and Good 75/115 lbs. 22.00-35.00, Utility 55/85 lbs. 5.00-20.00. FARM CALVES: No. 1 Holstein bulls 120/135 lbs.

75.00-92.50, 95/115 lbs. 109.00-122.00, 85/90 lbs. 67.50-90.00, No. 2 80/120 lbs. 35.00-95.00 mostly 75.00-95.00; few No. 1 Holstein heifers 85/120 lbs. 90.00-97.50, few No. 2 85/135 lbs. 50.00-90.00. Few beef cross bulls and heifers 80/100 lbs. 50.00-107.50.

HOGS 192...Barrows and gilts steady to 2.50 higher. BARROWS AND GILTS: US 1-2 230/275 lbs. 34.00-38.00, individuals to 43.00, US 1-3 220/280 lbs. 33.50-34.10, US 2-3 250/290 lbs. 33.25-33.85. SOWS: US 1-3 335/625 lbs. 28.00-35.50 mostly 32.00-33.00. BOARS: 220/690 lbs. 18.00-25.00, few to 40.00.

FEEDER PIGS 25...US 1-3 30/45 lbs. 25.00. --- per head.

SHEEP 50...SLAUGHTER LAMBS: Choice 65/100 lbs. 80.00-119.00, 100/140 lbs. 63.00-71.00. NEW CROP LAMBS: few Choice 45/70 lbs. 120.00-130.00. SLAUGHTER SHEEP: few 20.00-44.00.

GOATS 11...Few Medium 40.00-50.00, few Medium & Small 33.00-44.00. --- per head.

Randall G. Renninger

Certified Public Accountant

Specializing in agriculture and construction industries

"We help business people discover ways to cut costs, save taxes, and be more profitable"

Call about our FREE seminars

535 W. Orange Street, Lancaster, Pa. 17603
(717) 299-6480 + Fax (717) 299-6390

Farmer Boy Ag Systems Inc.

HEATING



Agricultural Heaters

Models from 40,000 BTU to 225,000 BTU
The Purafire heater provides a consistent, cleanburning and fuel efficient source of warmth for all types of poultry and swine houses. With near 100% efficiency, it uses less energy to yield greater BTUs for your money.



L.B. WHITE Agricultural Heaters

models from 15,000 BTU to 325,000 BTU

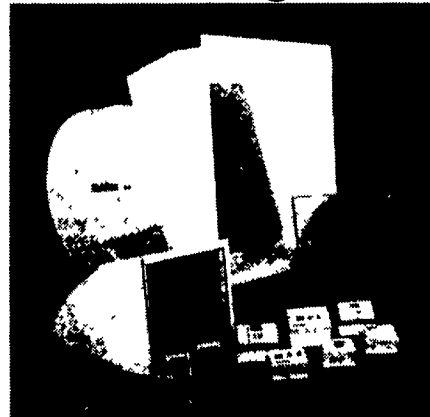


With an L.B. White pilot heater, you get the dependability of a time-proven design plus the safety standards you'd expect from an industry leader. So your animals stay warm and you don't have to spend time worrying about their safety.

VENTILATION

Multifan

VENTILATION EQUIPMENT



See the Complete Line of Multifan Fans 8" to 48"

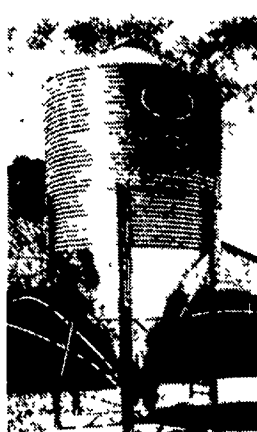
- Slant Wall with Cone
- Slant Wall with Hood
- Standard Exhaust Fans
- Specialty Fans

FEEDING



FEED BINS

- We assemble, deliver and set up bins on your farm
- * Weather tight die-formed roof
- * Stronger engineered sidewalls
- * Ground controlled fill caps
- * Galvanized roll-formed legs
- * Engineered leg braced systems
- * Fast flowing hopper bottom

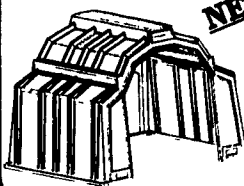


with the **Flex-flo™ AUGER SYSTEM**
In 2 1/4" dia. to 5" dia.

HOUSING

NEW Calf-tel Multi-Max

Ideal Group Housing for Calves • Goats • Sheep • Ostriches • Pigs



DIETRICH'S MILK PRODUCTS INC.

A LEGACY OF PRIDE

From a proud neighborhood dairy in the 1910's to a modern manufacturing company of the 1990's, the Dietrich family-owned business continues to move forward. With the dedication of three generations and a heritage rich in experience and innovation, Dietrich's Milk Products faces the future with confidence.

As in the past, our future success depends upon fine quality products made from quality milk.

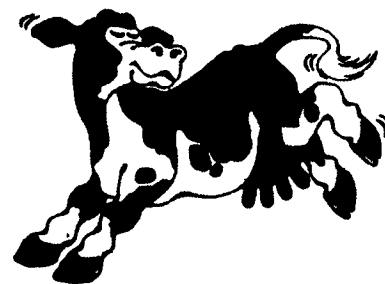
We need more good dairy farm families from your area to assure a continued bright future together.

OUR BENEFITS

- Strong Market Premiums
- Extra Pay For High Solids Milk
- A Field Staff That Knows The "Cow Business" And Is Here To Help You!
- High Quality Milk Premiums
- Sensible Hauling Rates
- A Local, Family-owned Dairy - Large enough to Serve your Milk Marketing Needs - Small enough to Know You!

SERVING LANCASTER, CHESTER, BERKS COUNTIES AND THE SURROUNDING AREA

dmp DIETRICH'S MILK PRODUCTS, INC.
100 McKinley Avenue
Reading, PA 19605-2117
READING OFFICE:
800-526-6455
DANIEL VOSBURG:
717-354-5562
JEFF JOHNS:
610-323-4630



24 Hour Service

Farmer Boy Ag Systems Inc.

410 East Lincoln Avenue, Myerstown, PA 17067
717-866-7565 • 1-800-845-3374

Hours: Mon-Fri 7 to 5:30
Sat 7:30 to Noon