

Foley sharpening equipment Sharpens circular hand saws, rethoother, 5 pcs. equipment. Extra hardware. Excellent condition. \$850 Firm. 717-687-0706

10 new trusses, 30'9" 5/12 pitch - \$65/each. Daniel King, 61 Queen Rd., Gordonville, PA. 717-768-7631 Lancaster Co.

Snow plow, 8' Diamond V-blade, fits 1975 to 1980 Chevy truck, all hydraulic. \$2000 OBO 410-239-8234 Baltimore Co., MD

Polled Herford bull, weighs 750-800, big enough for service. 717-766-7738 Cumberland Co.

Tire chains, cross-tie, 13-6-28 - \$200. IR air compressor, 5hp, twin cyl., 120 gal. tank w/ starter, single phase. 717-774-8379 York Co.

Jiffy power ice Auger, quick starting - \$150. 610-845-7325 Berks Co.

82 Volvo, GL diesel, insp. 2-99, new brakes, good tires, runs good - \$800. OBO Call anytime. 717-938-6318 York Co.

Floor scrubbing machine. Advance Convertomatic, 21", battery operated, wall hanging charger, #A21B, brushes & pads, needs work, make offer. 215-639-6331 Bucks Co.

1975 C-60 Chevy parts. Locust posts-\$3.35/ea. Farmall C, exc. cond.-\$2200 JD14T baler, JD mo-co. Delivery avail. 717-774-4615 York Co.

Registered Holstein bred heifers, from high record dams, due to freshen soon. All shots & vacc. 717-742-7008 Northumberland Co.

Camper, 95 Sunline, 25ft., like new, sleeps six, loaded-Asking \$12,000. Safe 2'x2'x30" high-Asking \$425. 717-938-3061 York Co.

Belgian gelding, good steady worker, sound, walker turner 36in. radial arm saw - \$400. 484 Peters Rd., New Holland, PA 717-354-4374 Lanc. Co.

New Idea 503 loader, off Olivar, trip bucket-\$500. A.C. snap coupler blade-\$450. Both very good. Nights 717-687-7336 Lanc. Co.

One large cast iron butcher kettle, 30 inch dia. 610-845-7736 Berks Co.

3yr., 16H, bay, TB gelding. Handsome, good mover. Quiet, clean, needs 1 1/2 mnths stall rest. Exc. prospect - \$1500. 610-869-8998 Chester Co.

1970 Chevy Impala, V-8, 350eng., 4dr., hardtop, fully loaded. One owner. 28,000 orig. miles. Like new cond. 610-933-2469 Montg. Co.

Factory cultivators, front rear MD50 BO or trade for 6ft. 3pt. disc. 717-524-6554 Lanc. Co.

Wheat and Oats straw, good quality. 814-422-8527 Centre Co.

Dia. Reo heavy-duty manure truck. Wic 4300 gal. extra wide tires, motor recent overhauled. \$6500. 301-733-8807 Wash. Co., MD

Orchard fenders, w/er son Ford 4000. \$150 for pair. 814-623-2287 Bedford Co.

JD7000 conservation 4rowx30", planted under 500 acres. Dry fertilizer, insecticide hoppers, monitor plumbing for liquid fertilizer. \$6500. 717-328-5038 Franklin Co.

MM G1000 diesel 120HP. \$3500. 717-532-7887 Cumb. Co.

2 Stainless range hood, 5' and 3'. 2 stainless cabinets with sink, regrig. storage lockable. 610-987-6731 Berks Co.

120+ free used stall dividers, good condition. \$25/ea. New 10:00-20 steering tire on rim - \$75. 717-933-8287 Berks Co.

Mossberg, 30/30 w/ scope - \$225. Rem. M-721, 30.06, like new - \$275. Rem. M-760, 223 Rem. - \$900 Firm. 717-862-3131 York Co.

4 year old Saddlebred mare. Drives good with lots of snap. 15.2 hands, sounds and crips. \$1250 717-445-0319 Lanc. Co.

One 12' Hugo Harrow and Roller combination and one Baker insert Wood stove, Call eves or morning. 610-683-3928 Berks Co.

7 & 8 yr. old sorrel work horses, good workers. Isaac L. King, 76 Locust Ln., Quarryville, PA Lancaster Co.

Calumet V2250, liquid manure spreader, tandem axles, 6" hose, one owner VG condition. 717-425-2194 Northumberland Co.

Free used 12" and 8" cement blocks, 10' by 40' Stave Silo with good doors. 610-689-8773 Berks Co.

Cultivators, plow, w-weights, d-bars, 4Cub"A". Platform scale, planter, transplanter, dbdisk hillers, cultivators, J.D. s-dressers, J.D., farmall, antiques, bicycles. 609-358-8625 Salem Co., NJ

IH 1066 Canopy, good condition. Cat D2 fender mount fuel tank and extra parts. 610-682-2692 Berks Co.

8-ton Cobey wagon, running gear with five good tires, needs a little help. \$135. 717-258-3955 Cumb. Co.

Grass hay, 5x6 round bales, no rain, stored inside. \$125 per ton. 717-284-2444 Lanc. Co.

Clover hay, 31ft. grain auger transport, MacKissin feed grinder transport, 4" grain auger, w/motor, J.D. 1020 tractor, gas, like new. 215-256-8533 Montg. Co.

7 Purebred Alpine goats, 2 yr. old to 4 yr. old. Good milkers, must sell - moving. Call John after 5 p.m 717-442-2369 Lanc.

Kodiak single door, wood stove. Holds 24" logs, good cond. - \$200. Call 717-382-4143 York Co

AKC breeding stock Westie - \$200; Min. Schnauzer - \$100; Rottweilers - \$50; Dalmations - \$25; Golden Retrievers - \$100; Bull Dog - \$700. 717-933-8962 Berks Co.

Quality regist. Black Angus Cows. Preg check and all shots. Impressive AHIR. 1997 calves at the farm. 215-598-3980 Bucks Co.

English Setter, tri-color, male, 1 1/2 years - \$300. To good home. Papers, shots, good natured. 717-244-1756 York Co.

Reg. Australian Sheperd breeding females, also a stud dog. All colors, some bred. 301-271-2258 Fred. Co., MD

Three registered Polled Hereford bulls, ten to twelve month old - \$700 to \$800 each. 717-867-4860 Lebanon Co.

AC HD11 dozer with winch - \$6000. Chev water truck - \$1500. Cat 12 grader - \$2500. Davey gas comp - \$600. 410-378-2785 Cecil Co.

10ft. ramp-\$275. Hospital bed (manual)-\$100. Gymnastic uneven bars-\$500. 8ft. pickup cap-\$150. Small tractor cab. 717-286-5306 Northumberland Co.

Warm Morning Stove - \$125. Kerosense Stove - \$100 OBO. Wood or coal furnace - \$50 OBO. 717-336-3663 Lancaster Co.

NI 12A manure spreader. Excellent condition, ground driven - \$800. NI 200 manure spreader, PTO, new floor, good - \$1000. 412-283-5257 Butler Co.

3 8-22.5 truck tires on new Chevy wheels. \$20 takes all. 717-927-6248 York Co.

Dog pens, chain linked, 4units. (5)wood sheds, storage. 1979 Gradywhite boat MTR-Trailer. 1929 Mercedes wagon. Gas wood splitter. 609-758-7873 New Co., NJ

Case530 tractor, exc. cond., new motor, 3pt. draft control, 12sp., wide front end, 2700 hours - \$4500. Eves. 717-345-4109 Sch. Co.

Wood stove - best offer. Weight bench and weights - best offer. Leave message and phone number. 610-486-0462 Chester Co.

Two-piece cherry buffet and lighted china hutch with glass shelves - \$800 Negotiable. Only six years old. 717-582-7423 Perry Co.

See Us Year-Round FOR ALL YOUR FARM TIRE NEEDS

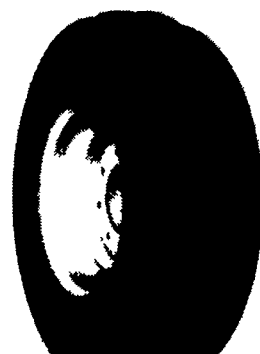
STUBBLE'S TOUGH

Firestone's New "Stubble Stompers" Are Tougher!

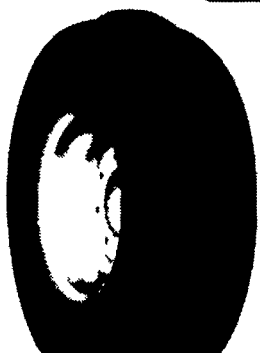
With today's improved hybrids, corn stalks are tougher than ever ... and that's bad news for front and implement tires. If you're tired of the chipping, chunking and punctures caused by standing stubble, fight back with Firestone's new "Stubble Stomper" front and implement tires.

- Special high-tear-resistant rubber compound for strength.
- Designed to withstand standing stubble.
- First Firestone front and implement tires covered by the same warranty for stubble as Firestone rear tires.
- Available in the Champion Guide Grip 4-Rib, Champion Guide Grip Heavy Duty 3-Rib and Plain Tread Implement.

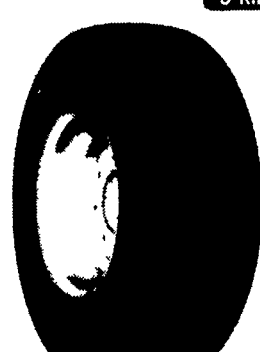
Don't let stubble take a bite out of your tires ... and your profits. Keep rolling in even the toughest field conditions with Firestone's new "Stubble Stomper" front and implement tires.



CHAMPION GUIDE GRIP
4-RIB



CHAMPION GUIDE GRIP HEAVY-DUTY
3-RIB



PLAIN TREAD IMPLEMENT

ADAMS
Biglerville Tire & Auto
Biglerville, PA 17307
717-677-8338

BLAIR
Rhodes Farm Supply
Williamsburg, PA 16693
814-832-2491

BRADFORD/SULLIVAN
Hiland's Farm & Home
Service
Rome, PA 18837
717-744-2371

BERKS
Kantner's Tire Service
Shoemakersville, PA
19555
610-562-2567

BUCKS
Miller Tire & Auto
Blooming Glen, PA 18911
215-257-4307

CAMBRIA
At's Tire of Barnesboro
Barnesboro, PA 15714
814-948-7880

CENTRE
Dunkle & Grieb
Centre Hall, PA 16828
814-364-1421

CHESTER/DELAWARE
S G Lewis & Sons
West Grove, PA 19390
610-869-2214

Stolzhus Farm Service
Cochranville, PA 19330
610-593-2407/2408

COLUMBIA
Steve Shannon
Tire Co., Inc
Bloomsburg, PA 17815
800-343-TIRE

Steve Shannon
Tire Co., Inc
Route 487
Benton, PA 17814
717-925-2821

CUMBERLAND
Barrick Tire Sales
Newville, PA 17241
717-776-5762

DAUPHIN
Long's Tire Service
Halifax, PA 17152
717-896-2215

GREENE
Burns Tire Service
Waynesboro, PA 15370
412-627-8263

INDIANA
Allegheny Farm Service
Marion Center, PA 15370
412-397-2660

Baker's Farm Equipment
Commodore, PA 15729
412-254-6400

LANCASTER
Leola Tire Service
Leola, PA 17540
717-656-2574

Messick Farm
Equipment, Inc
Elizabethtown, PA 17022
717-367-1319

LAWERANCE
Sankey's Feed Mill
Volant, PA 16156
412-530-2463

LEBANON
Lebanon Valley
Implement, Inc
Richland, PA 17087
717-866-7518

LEHIGH
Joe's Battery & Tire
Allentown, PA 18103
610-437-4961

MIFFLIN
Pine Glen Farm Service
McVeytown, PA 17051
717-899-7400

MONTOUR
Steve Shannon Tire
Danville, PA 17821
717-275-5506

NORTHUMBERLAND
Rovendale Supply
Watsonstown, PA 17777
717-538-5521 or
717-742-7521

PERRY
Smith Farm & Equipment
Newport, PA 17074
717-567-3562

SCHUYLKILL
Charles Snyder, Inc
Tamaqua, PA 18252
717-386-5945

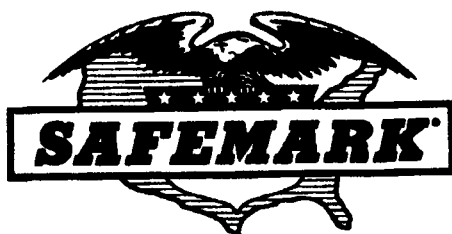
UNION
Mifflinburg Farm Supply, Inc
Mifflinburg, PA 17844
717-966-3114/3115

WESTMORELAND
J&M Machinery Co
Greensburg, PA 15601
412-668-7850

YORK
State Line Tire & Auto
Shrewsbury PA 17361
717-235-8789

NEW JERSEY
Farmers Brokerage & Supply
Allentown, NJ 08501
609-259-7324

Tire King
Sussex, NJ 07481
201-875-5250



SAFEMARK

• QUALITY
• SERVICE

CALL 1-800-PFB-TIRE
For Dealer Nearest You

• DEPENDABILITY
• ECONOMY

