

# 'People You Meet Are The Good Part Of Showing'

(Continued from Page B18)

running probably about five to 7,000 ewes out there, I would guess," said Greg.

What do the Powells look for in a Rambouillet?

"The Rambouillet is a wool sheep, and they are supposed to have fine fleeces," said Greg. "We

try to work to get fine, uniform fleeces. More and more people are getting their fleeces uniform, but not necessarily fine anymore. So we're real critical especially on the rams that we use, that they have the type of fleece that we're looking for."

Size is also important as well as

muscling and good feet and legs.

"I don't know if you can say 'the bigger the better,' but it's gone that way," commented Greg, "as long as you don't run into a lot of other problems."

On the show circuit, the Powell and Strausbaugh names are not new. Sheep breeders might recall

the Powell name from last year's Farm Show where the family took home both the premier breeder and premier exhibitor banners in the Rambouillet show. They also had the supreme champion ram of the wool breeds as well as the supreme champion sheep.

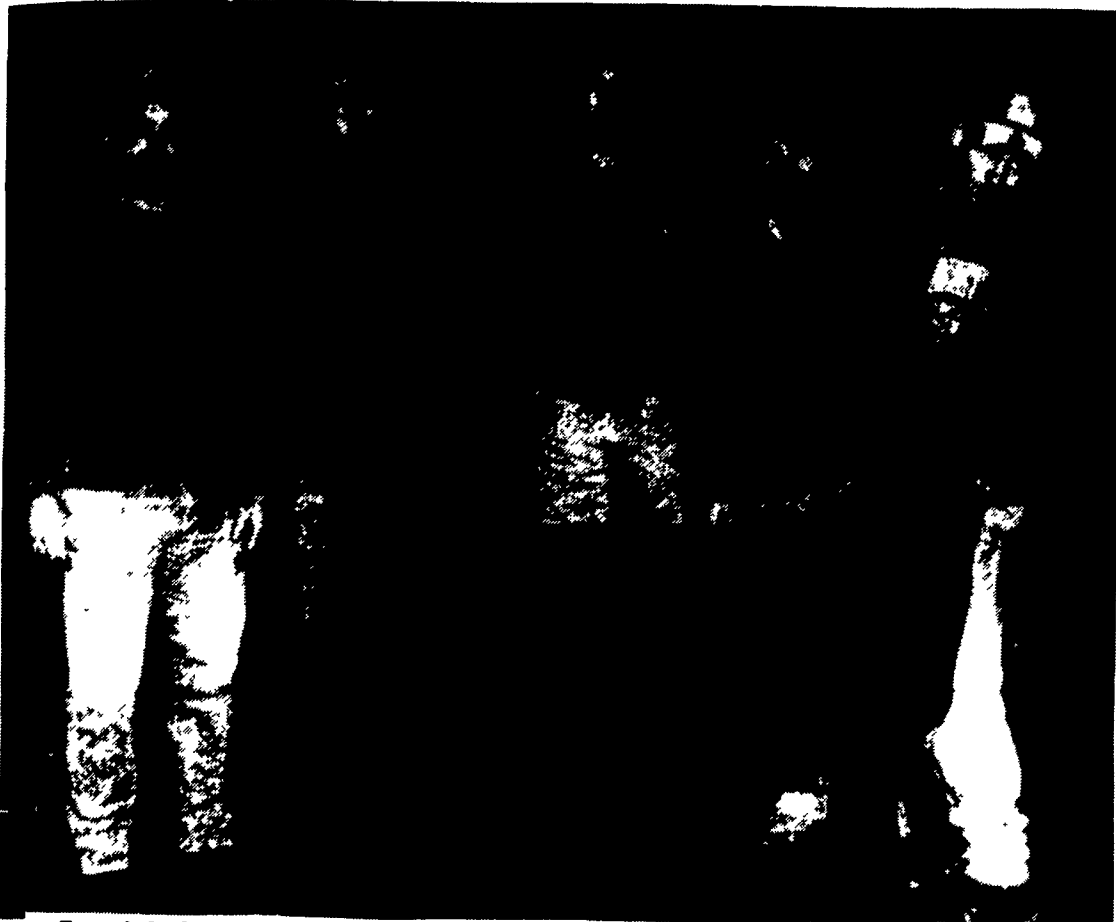
That ram, Powell 9551, was sold to Colleen and Jimmy Horn of Ben Bolt, Texas this fall after being named the champion at the Maryland Sheep and Wool Festival and the champion at Eastern States Exposition.

A long list of Farm Show awards went to the family's other sheep as well, including first and second yearling ewe, first and second fall ewe lamb, first and second spring ewe lamb, first pair of ewe lambs, first pen of lambs, and first breeder's young flock.

Greg's son, Jeff, had the grand champion market lamb at the 1987 Pennsylvania Farm Show.

In other shows last summer, the Powells also tasted success with a spring ram lamb in natural color.

(Turn to Page B21)



From left, Greg, Kenneth, Rich, and Doris gather around Geoff, who holds the family's black ram. Although the ram has won many awards in his short life, he will not be making the trip to Harrisburg this January because there are no classes for natural color sheep.



Kenneth Moore has been raising and showing sheep almost all of his life. He made his first trip to the Pennsylvania Farm Show in 1936. Here he holds one of the Rambouillet lambs that are housed on his farm.

## Paul B. Zimmerman INC.

### Heavy Duty Bale Movers

Finished with Baked on TGIC Polyester Powder Coating

With Kverneland Forged Steel Spears • Electrically Heat Treated  
These spears are stronger & allow easier bale penetration

**COM 2502**

- Fits any 3 pt hitch or loader boom with 1 or 2 cylinders
- Easy to change from 1 to 2 spears
- 2500 lb capacity

**3PT 2502**

- For 3 point hitch
- Easy to change from 1 spear to 2
- 1500 lb capacity

**2PT 1000**

- Attaches to lower 3 pt. arms only
- Safety chains prevent flip around
- 1000 lb capacity

**3PT 1252**

- Easy to change from 1 spear to 2
- 1250 lb. capacity
- 1 7/8" CRS-C1144 steel spear

**SSL 2500**

- Great for front loaders
- Mounts in minutes
- 1500 lb capacity

**PLF 4000**

- Front end loader fork
- Includes chain & binders
- 1500 lb capacity

**Feed Big Round & Regular Bales or Stacks**

**Hay Bale Feeders with 4', 5', 6', 8' & 10' panels**

### Paul B. Zimmerman, Inc.

295 Woodcorner Rd. • Lititz, PA 17543

717/738-7365

1 mile West of Ephrata

Hours  
Mon - Fri 7-5  
Sat 7-11

Call or write for additional information  
& the name of your nearest dealer



We sell a wide variety of

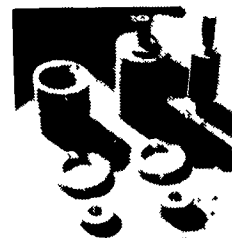
**BALDWIN FILTERS**

Please ask us about our filter program now

### Need Specialty Parts?

Manufacturing and Machining  
Our Specialty.

Air motors, gears, clutch reductions, and much more.



- Replacement Rockford Reduction gears, shafts & parts for gas and diesel engines to approx. 125 HP
  - Machining Bell Housings & extensions
  - Fly wheel turning and matching to fit clutch.
    - Pilot Brg Adaptors
  - Machine work includes: Keyways, broaching, tapers, PTO splines & others
  - Parts Hardening and precision grinding
  - Air & Hydraulic operated automated machines & fixtures
  - Machining, spur & Helicoil gear mfg.
- Need machine work done, Parts, etc? 1 or 1,000 pcs? We will be glad to give you a price.

### BEILER ENGINE & MFG.

Write or Call  
For More Information

1622 Georgetown Rd., Christiana, PA 17509  
(1 1/2 mi. south of Nine Points on Rt. 896)  
Call us at (717) 529-6595 7:45 to 8:30 a.m.