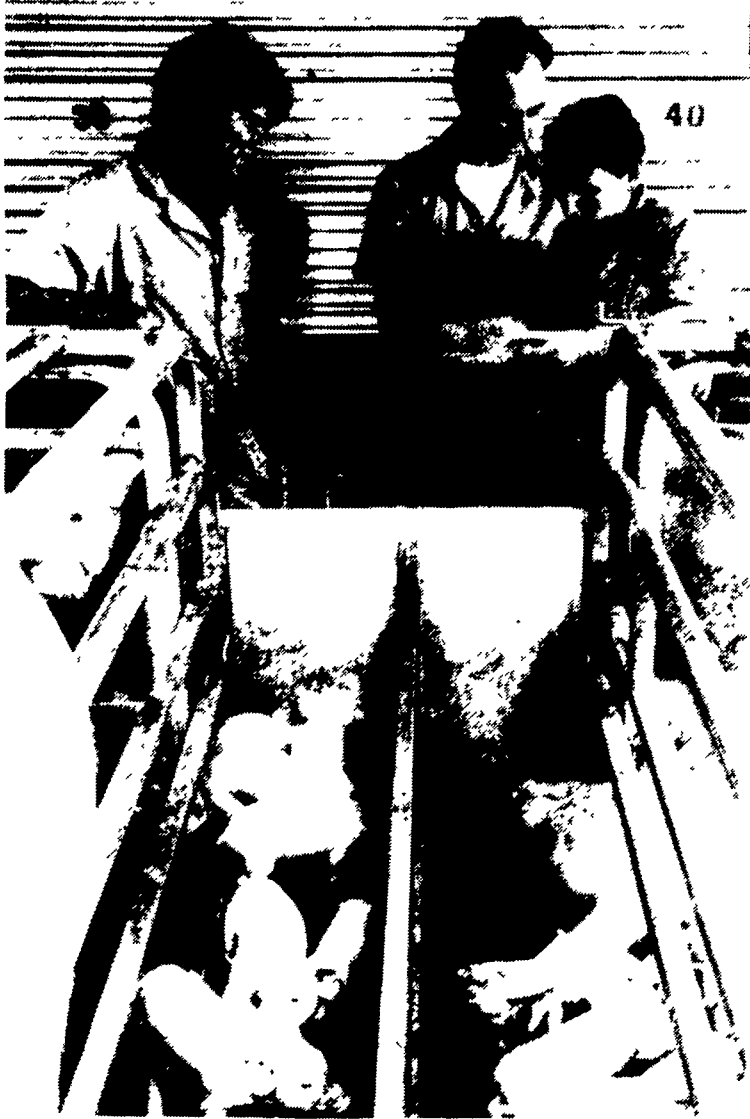


News From New Bolton Center...

School of Veterinary Medicine
UNIVERSITY OF PENNSYLVANIA



The primary responsibility of the swine initiative is to graduate veterinarians that are trained to provide service to the Pennsylvania swine industry. At right is Sally Anne Aschenbrand with, from left, Dr. Paul Pitcher and Dr. Tom Parsons.

SWINE INITIATIVE AT THE SCHOOL OF VETERINARY MEDICINE UNIVERSITY OF PENNSYLVANIA

T.D. Parsons, V.M.D., Ph.D.
Assistant Professor of Swine Production Medicine Introduction

The Pennsylvania swine industry is in a period of growth and expansion. It is vying with poultry production to be the runner-up behind dairy as the State's second most important agricultural industry. The hog population in Lancaster County remains one of the nation's most dense. However, expansion beyond the traditional borders of swine production in Pennsylvania has been compelled by continued industry growth. To help accommodate the burgeoning needs of this industry's expansion, the University of Pennsylvania School of Veterinary Medicine has established a program in swine production medicine.

The Penn swine initiative was launched at the university's large animal campus, New Bolton Center, to address the changing requirements for veterinary involvement in this

dynamic food animal industry. In 1994, Paul Pitcher, D.V.M., M.S. joined the staff as clinical educator in swine production management, and a year and a half later, I came aboard as assistant professor in swine production medicine.

Drs. Pitcher and Parsons bring to New Bolton Center an extensive and diverse back-

ground in swine medicine. Pitcher has graduate training in epidemiology, has worked as a private practitioner in Iowa and as a federal veterinary medical officer on the nation-wide pseudorabies eradication project. I have a background in basic research, having trained at the Max Planck Institute in

(Turn to Page 13)



Several continuing education programs are available for both veterinarians and local swine producers. Producer education programs are recognized as the most effective approach to accomplish the service mission goal which is to complement and extend the existing expertise provided to the Pennsylvania swine industry via the local swine practitioners, cooperative extension agents, and allied industry consultants.

PRECISE

CONCRETE WALLS, INC.

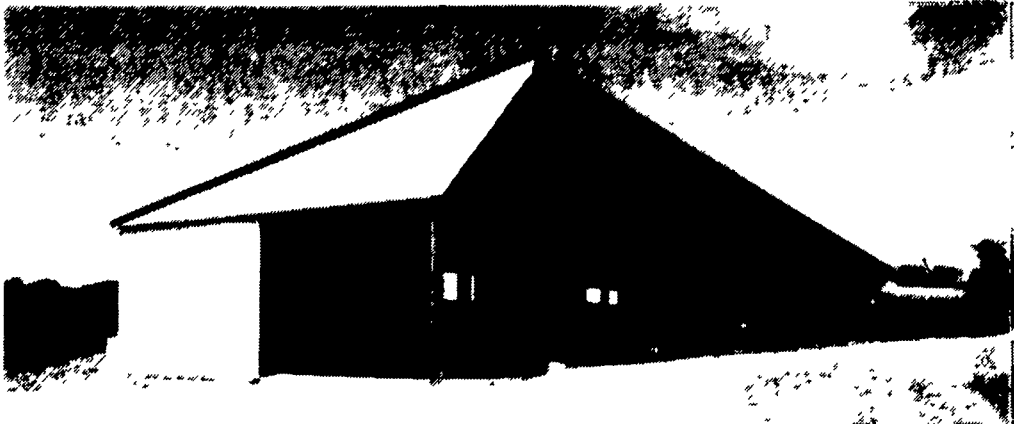
For All
Your Concrete
Walls And
Construction Needs

Agriculture - Residential - Commercial

- Buildings • Basement • Floors
- Retaining Walls • Footer
- SCS Approved Manure Storage Pits
- All Types Of Flat Work

Specializing In
Manure Storage

Round or Rectangular,
In-Ground or
Above-Ground



Virginia Style Heifer Barn With 8' Deep, 180' Long, 12' Wide Slatter SCS Approved Concrete Manure Pit

Invest In Concrete, Quality Work That Will Last A Lifetime

CALL FOR **FREE** ESTIMATES
AND SEE HOW AFFORDABLE
CONCRETE WALLS CAN BE

CONTACT
ROY SENSENIG
717-355-0726

PRECISE CONCRETE WALLS, INC.

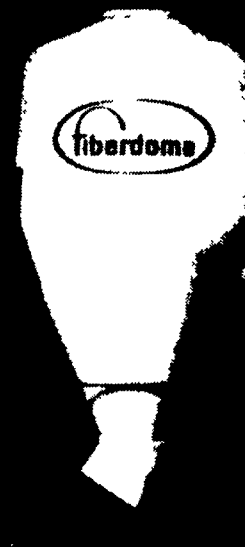
531 Hollander Rd., New Holland, PA 17557



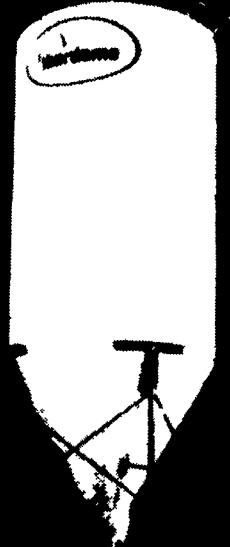
Why settle for 2nd best -
when Fiberdome now man-
ufactures the most
advanced fiberglass bulk
bin available!

- Eliminates bridging, won't rust or corrode
- Cuts heat buildup and condensation
- Feed stays fresh in any weather
- Precision engineered for long, long life
- Unique 5 year warranty
- Adaptable to any auger or feeding system

Capacities: from 2.5 ton to 30 ton.
(Tonnage based upon 10 lb./density) Industrial Bins Available



(2 - 10 Ton)



(11-30 Ton)

Write for a full color brochure and a free sample of fiberdome.
The modern material used for high-performing bins.

...made to last
Contact your nearest dealer.



SOLLENBERGER SILO
Chambersburg PA
717-264-9588

P.O. Box 11 • Lake Mills, WI 53551
(414) 648-8376

DEWILLER SILO
Newville PA
717-776-6321

FARMER BOY AG SYSTEMS
Myerstown, PA
717-866-7565
or 1-800-845-3374

McMILLEN BROTHERS
Loysville PA
717-789-3961

SOMERSET BARN EQUIPMENT
Somerset PA
814-445-5555

HOOVER EQUIPMENT
Tyrone, PA
814-684-1777

CEDAR CREST EQUIP.
Lebanon PA
717-270-6600