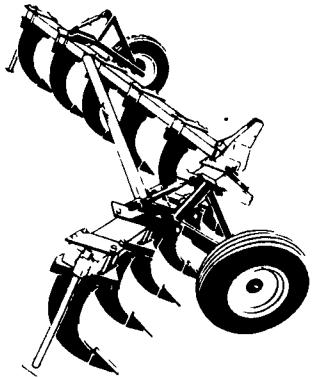


Brillion

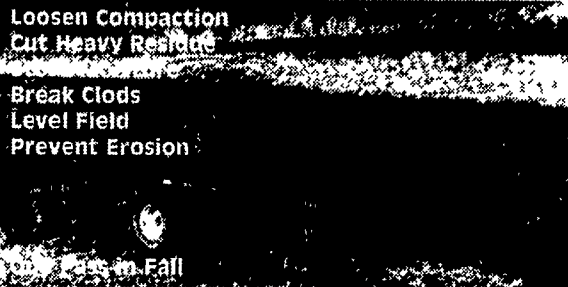
The "Quality Crafted" Line Better Seedbeds... Better Stands!

SUB-SOILERS 3-5-7 Shanks

The husky, curved shanks of the Sub-Soiler dig down as deep as 16 inches, shattering compacted layers of plow sole and lifting the hardpan while it is being broken.

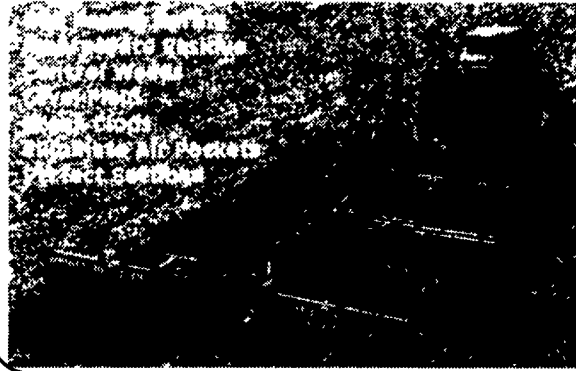


BRILLION COMMANDER SYSTEM



Loosen Compaction
Cut Heavy Residue
Break Clods
Level Field
Prevent Erosion

Versatile tillage tools such as Brillion's Soil Commander allows the use of Chisel Shanks or Deep-ripper Shanks to break up soil compaction. Front disk gangs and optional rear leveling disks cut residue, breaks clods, level the field and prepare the field to absorb moisture from melting snow and to reduce soil erosion. Brillion's Field Commander combined with a Brillion Pulverizer excels at creating the perfect seedbed for spring planting. C-Shanks or S-Tine Shanks leave a uniform mixture of soil and surface residue for the most efficient chemical incorporation. The X-Fold Pulverizer (shown below) breaks up clods, firms the soil without compacting, eliminates air pockets in the soil and levels the soil for optimal seed placement. For less time in the field and better yields, go Brillion



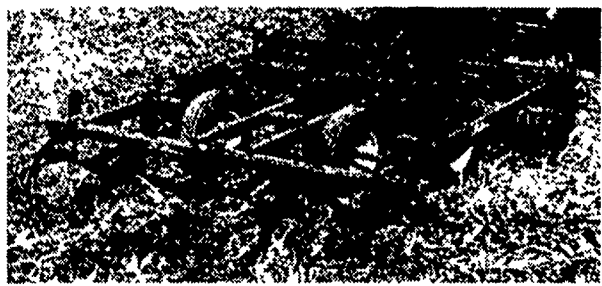
COMPACTION COMMANDERS NO-TILL RIPPER/DEEP RIPPER - 3-5-7 Shanks

Brillion introduces their new Compaction Commander... designed to break up hardpan and compaction as deep as 20".



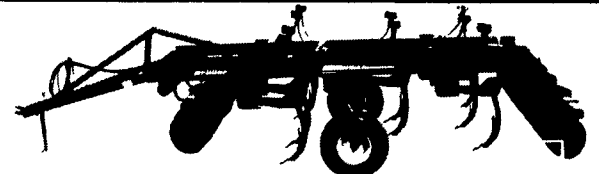
The standard V-shaped alloy point and wear strip leaves residue on the surface with minimal soil disturbance. Auto-rest shanks with 20" of trip height allows for non-stop tillage. Parabolic shanks lift and fracture the soil. 39" of underframe clearance assures trouble free operation even in heavy residue.

SOIL BUILDERS 5-7-9-11-13 Shanks



SOIL BUILDERS. Optional - Coulter gang can be hydraulically controlled to save maintenance dollars. Available in 2 & 3 bar.

SOIL COMMANDERS 4-5-7-9 Shanks



The Brillion Soil Commanders take Residue Management to the next generation of soil conservation efficiency.

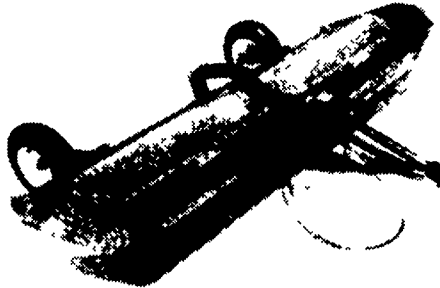
The Soil Commanders are versatile tillage tools designed to meet the needs of the mid-size farmer who uses a 150-200 H P tractor. One of the keys to the machine's versatility is that it uses interchangeable shank legs and individually mounted disk assemblies instead of a disk gang. This makes possible a machine with disk assemblies on the front and rear of the frame with chisel plow or deep-ripper shanks on 15", 24", 27" or 30" spacings.

LANDCOMMANDERS 3-5-7-9-11-13 Shanks



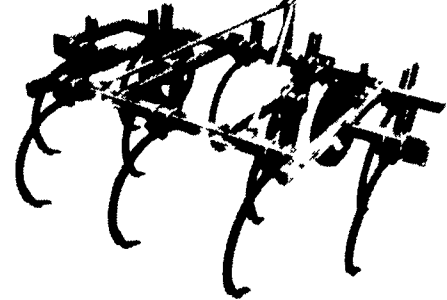
The front disc gang has 22" x 1/4" disc blades on 15" spacings. They are designed to cut residue and work the ground to a depth of 6". The Landcommander has the ability to till from 8" to 20" deep. The rear disc gang has 20" x 7 ga. disc blades on 7.5 spacing. The 6"x4" mainframe is designed to handle the stress from the deep till shanks and disc gangs.

FLAIL SHREDDERS 12 Ft. And 15 Ft.



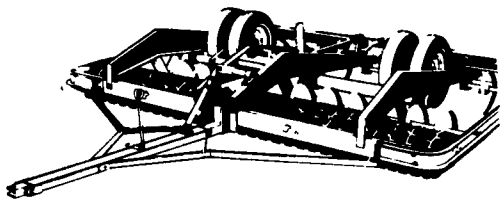
FLAIL SHREDDERS Heaviest gearbox on the market eliminates the number one cause of downtime. Either cup or side slicer knives. 540 or 1000 RPM.

2 or 3 BAR CHISEL PLOWS 5-7-9-11 or 10-12-14-16 Shanks



The CPP series of mounted models enables you to turn short and fast... to transport easily, utilizing your tractor's hydraulic system.

M-MD PULVI-MULCHERS 7'4", 10'4", 12'4", 13'8", 15'



The Brillion Pulvi-Mulcher converts fall or spring plowing into clod-free, high yield seedbeds. Just flick the tractor hydraulic control, pulvi-mulcher lifts to transport wheels.

ML SERIES PULVI-MULCHERS 12'6", 13'10", 15'2", 18'9"



- Easy rolling 20" ductile iron notched or crowfoot roller wheels with 5 year limited warranty.
- Longer life external mounted bearings.
- Longer, heavier drawbar for shorter turns.

WL SERIES PULVI-MULCHERS 21'8", 25', 30'



- Easy rolling 20" ductile iron notched or crowfoot roller wheels with 5 year limited warranty.
- Longer life external mounted bearings.
- Longer, heavier drawbar for shorter turns.

FOR MORE INFORMATION... CONTACT YOUR BRILLION DEALER

OLEY
Pikeville Equipment, Inc.

QUARRYVILLE
Grumelli Farm Service

TAMAQUA
Charles Snyder, Inc.

WASHINGTON
Bull International

WATSONTOWN
Deerfield Ag & Turf
Center, Inc.

MARYLAND

FREDERICK
Knott & Geisbert, Inc.

RISING SUN
Ag Industrial Equipment

NEW JERSEY

BRANCHVILLE
The Roy Co., Inc.

BRIDGETON
Leslie Fogg

ELMER
Pole Tavern Equip. Sales Corp

HIGHTSTOWN
Hight's Farm Equipment

VIRGINIA

HARRISONBURG
Rockingham New Holland, Inc.

