

**WOLF MOTOR CO.**

OVER 60 YEARS IN BUSINESS!  
 ROUTES 72 & 283, LANCASTER, PA 17601



**CENTRAL PA'S FORD TRUCK DEALER**

Sales Reps: Charlie Burke, Gary Brennehan, Dennis Asel, Mgr.

717-299-4331

Toll Free 800-637-6612



**1997 FORD LT 9513**  
 350 Hp Cat Eng. 10 speed, 15 Steel Dump Body, 56,000 GVW  
**\$78,900**



**92 MORGAN VAN BODY**  
 20', 96" High, Roll-Up Rear Door  
**\$3,800**



**1998 FORD L8501**  
 33,000 GVW 250 HP Diesel, 5+2 Speed, 20' Van Body, Only 1,500 Miles  
**\$44,000**



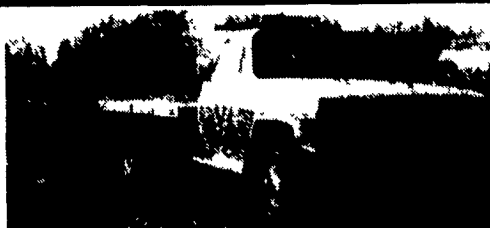
**1989 FORD SUPER DUTY F-450**  
 460 V-8, 9 Flat Bed, 5 Speed, 60,000 Miles  
**\$10,900**



**NEW 96 FORD F350 CREW CAB**  
 Dually Pickup Power Stroke Diesel Auto Leather Int Complete Factory Warranty **\$31,900**



**1998 FORD LT 9522**  
 410 Hp Cat Eng. 10 Speed, 17 1/2' Alu. Dump Body w/Lift Axle  
**\$106,000**



1988 Chevrolet K-30 4x4, 6.2 Turbo Diesel, AT, PS, AC, Good Condition

**\$8,900.00**

23 ft. Special Construction Trailer. Pintle hitch, 18 ft. with 5 ft. beaver tail, 10,000 lb. - 2-5200 lb. Torflex axles.  
**\$2500 or both \$11,000**

No Sunday Calls (717) 361-9296



1996 - 8'x16', 7,000 GVWR, Toolbox, treated wood floor and sides, stake sides, Torflex axles, used very little, 15" wheels. **\$3,200. OBO**

**Frank Zimmerman**

6 Cherry Tree Lane • Leola, PA 17540  
**717/656-8358**

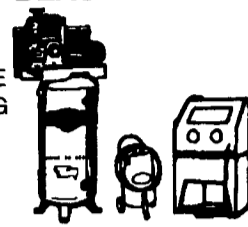


**SAND BLASTERS & BLAST CABINETS**



4294 E. HARRISBURG PIKE  
 DEPARTMENT LF CATALOG  
 MIDDLETOWN, PA 17057  
 (717) 944-0318  
 Route 230 Between  
 Elizabethtown & Middletown

**FREE CATALOG CALL OR WRITE NOW!!**



**SAVE \$\$\$**

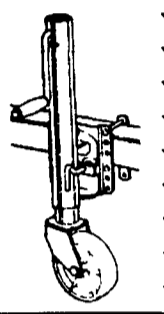
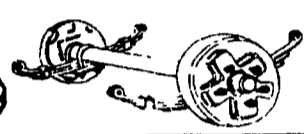
**TOOLS AND EQUIPMENT**

**AUTOBODY PARTS, PAINTS & SUPPLIES**

**BUILD OR REPAIR YOUR TRAILER. WE HAVE PARTS.**

**MOST CLASS III HITCHES**

**\$79<sup>99</sup> to \$89<sup>99</sup>**



**USED 4x4's Pickup's, Bronco's & Blazer - Call For Our Low Prices**



**NEW UTILITY TRAILERS**  
 3,000 GVW, Extra Heavy Frames w/Treated Lumber Deck, Lights, Chains, Etc Included!!!  
 5'x10' Deck.....**\$750**  
 6'4"x12' Deck.....**\$875**  
 Add-On Landscape Ramp/Gate.....**\$145**



**"NEW" 16' Deck Car Hauler**  
 Has Two 24" Wide Diamond Steel Runners Tube Steel Frame 4 Wheel Brakes Safety Breakaway Kit & Full Lighting Beavertail & Ramps Removable Left Fender & More For **\$1,750**

Hours: Tues.-Fri. 9 AM - 6 PM Saturday 9 AM - 2 PM Closed: Sunday & Monday

**PHONE 717-274-2000**

**Toll Free**

**1-800-650-1420**

**RTE. 422 WEST LEBANON, PA**

(Across From Lebanon Valley Mall)

**CAR VILLAGE**

**HEAVY DUTY TRUCKS**

**Business Hours Mon.-Fri. 9-9 Sat. 9-4**

**THIS IS ONLY A PORTION OF OUR HUGE INVENTORY**



**TOW MACHINE**  
 92 DODGE CLUB CAB DUALY 4X4 Super Strong Cummins, Excellent Power, Great Fuel Mileage, AT, A/C, Lock Out Hubs, 60,000 Miles



**'96 CHEVY K3500 4X4 SUPER CAB DUALY**  
 Silverado, High Output 6.5 Turbo, AT, A/C, 4 10 Gears, Chrome Simulators & Lots More, New TK Warranty \$28,900



**CREW CAB DUALY 96 CHEVY** Like New, Only 7,915 Miles, Remaining New Tk Warranty, High Output, 6.5 Turbo Diesel, AT, A/C, Power Everything, 4-10 Gears, Heavy Duty Tow Pkg.



**FARM FLATBEDS**  
 '84 Ford F350, '85 Chevy C-30 Run Well, Call For Details



**'95 FORD F250 4X4 SUPER CAB**  
 Heavy Duty Powerstroke Turbo Diesel, AT, A/C, Tow Pkg., Dual Tanks & Plenty More **\$21,900**



**4x4 1 TON PICKUP FORD F350 XLT**  
 Powerstroke Turbo Diesel, 5 Sp, A/C, Limited Slip 4 10 Gears, Dual Tanks, Factory Warranty



**4X4 CREW CABS**  
 Single Rear Wheel Powerstroke Turbo Diesel, AT & 5 Sp. Loaded XLT's & Workstyle XL Call For Details



**96 FORD F250 4X4**  
 heavy Duty 3/4 Ton Power Stroke Turbo Diesel AF, A/C, 4:10- Gears Aluminum Wheels, Only 12,000 Miles



**CUMMINS TURBO DIESEL 89 DODGE 4 WHEEL DRIVE**  
 Heavy Duty 3/4 Ton, Auto, A/C, Tow Pkg, Lock Out Hubs, Western Plow



**92 DODGE 250, 5SP. CUMMINS**  
 Heavy Duty Work Truck, Cummins Turbo Diesel 5 sp., Gooseneck & Class 3 Hitches



**4x4 WORK TK, 95 FORD F250 XL**  
 Heavy Duty 3/4 Ton, Powerstroke Turbo Diesel, 5 Sp Trans, Dual Tanks, Vinyl Seat, Vinyl Floor, Extra Extra Clean, Only 31,000 Miles, New Tk Warranty Remaining



**4X4 DIESEL SUPER CAB 96 FORD F250 XLT**  
 A Nice One, Only 23,000 Miles, Auto, Loaded, XLT, Aluminum Wheels, 40/20/40 Seat



**'97 DODGE 3500 SLT LARAMIE**  
 5 Sp Dually, Awesome Tow Machine, Cummins Turbo Diesel, 5 Sp., A/C, Tilt, Cruise, Heavy Duty Frt. & Rear Dana Axles, 4:10 Gear, New TK



**'89 FORD F250 XL**  
 4x4 Heavy Duty, Great Farm Truck, Vinyl Seat, Vinyl Floor, Local 1 Owner, 351 FI, V8, Auto, A/C



**95 DODGE 2500 4X4 SLT LARAMIE**  
 Cummins Turbo Diesel, AT, A/C, Tilt, Cruise, Brand New Tires, Very Clean **\$19,900**



**Chassis Cab 96 4x4 F350**  
 Powerstroke Diesel, AT, A/C, Sht 137 WB



**5 SPD. DIESEL 4X4 93 FORD F250 XLT**  
 Strong Diesel Power, Heavy Duty 3/4 Ton Lock Out Hubs, Dual Tanks, A/C Only 66,700 Miles, Nice Driver, Clean Tk



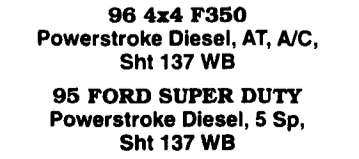
**'94 FORD F350 XLT**  
 5sp., Crew Cab, Hard To Find, Good To Own, Turbo 7.3 Diesel, 5sp, A/C, Tow Pkg., Dual Tanks, Real Clean, 50,000 Miles



**5 SP. POWERSTROKE 96 FORD F250 4X4**  
 Heavy Duty 3/4 Ton Beautiful Tk, Only 25,000 Miles, Powerstroke Turbo Diesel, 5 Sp, A/C, 40/20/40 Seat, Aluminum Wheels



**5 SP DUALY, 94 CHEVY 4 WHEEL DRIVE**  
 Great Pulling Tk, High Output, 6.5 Turbo Diesel, H D 5 Sp., A/C, Gooseneck & Class 3 Hitch, Only 40,000 Miles



**95 FORD SUPER DUTY**  
 Powerstroke Diesel, 5 Sp, Sht 137 WB



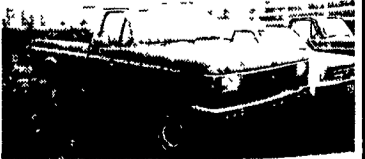
**OLD 4X4 DIESEL 86 FORD F250**  
 Diesel Power 4 Sp. Trans, Lock Out Hubs



**'90 FORD F250 4X4**  
 Cheap Diesel Super Cab, 7.3 Diesel, AT, A/C, Captain Chairs, Lockout Hubs, H.D. Suspension **9,900**



**4X4 - 97 FORD F350 CREW CAB DUALY**  
 Impossible To Find - But We Have One! Like New, Only 3,000 Miles, Powerstroke Turbo Diesel, AT, Every Option, Alcoa Aluminum Wheels



**'89 FORD F250 4X4**  
 V8-5sp., Perfect To Pull Those Hay Wagons **\$4,900**