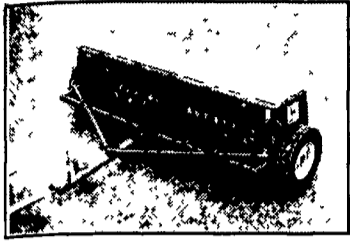


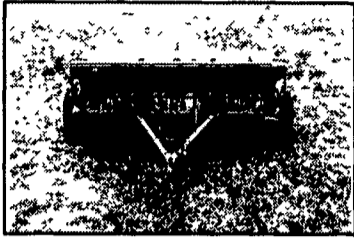
# Used Equipment

## WHITE TAG SALE Priced On White Tags

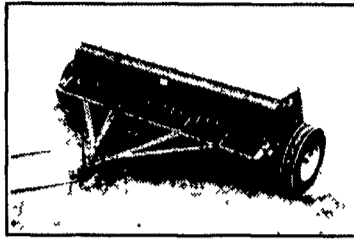
### USED DRILLS



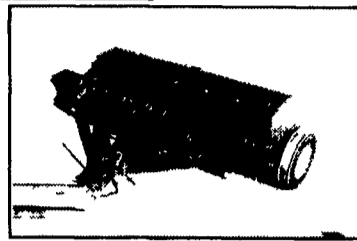
20943 (A) John Deere 8350-12'  
Was \$2,200 Sale \$1,850



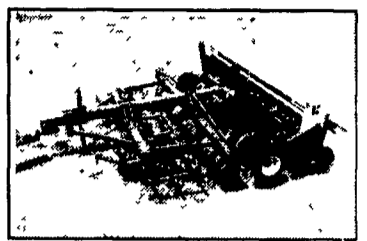
30039 (C) IH 16x7  
Was \$950



20836 (A) Case IH 5100 24x6  
Was \$4,900 Sale \$4,600



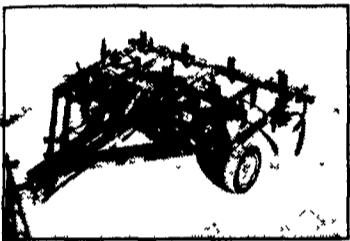
21352 Case IH 5100 24x6  
Was \$6,000 Sale \$5,500



20710 (A) Krause 5215  
Was \$8,500 Sale \$7,900

| Unit #    | Make         | Model      | Yr. | Was    | Sale    | Unit #    | Make         | Model        | Yr. | Was    | Sale   |
|-----------|--------------|------------|-----|--------|---------|-----------|--------------|--------------|-----|--------|--------|
| 14785 (B) | John Deere   | 8300       |     | 2,800  | \$2,500 | 15194 (B) | Great Plains | 24' NT       |     | 33,000 | 32,000 |
| 15274 (B) | John Deere   | 8300       |     | 2,800  | 2,500   | 13952 (B) | Great Plains | 30' NT       |     | 32,000 | 29,800 |
| 14504 (B) | John Deere   | 8300-18x7  |     | 2,900  | 2,500   | 14056 (B) | Case IH      | 5100         |     |        | 3,500  |
| 20777 (A) | Lilleston    | 9680NT     |     | 8,500  | 8,200   | V1193 (A) | Case IH      | 5100 24x6    |     | 4,900  | 4,250  |
| 15087     | Lilleston    | Drill      |     | 7,500  | 6,900   | 15033 (B) | John Deere   | 750          | 95  | 23,500 | 22,900 |
| V7859 (A) | Case IH      | Hitch      |     | 3,750  | 1,395   | 21348 (A) | John Deere   | 750-15' NT90 |     | 14,500 | 13,900 |
| 20740 (A) | Houck        | Twin Hitch |     | 4,500  | 3,500   | 21318 (A) | John Deere   | 8250 14x7    |     |        |        |
| V9436 (A) | Great Plains | 15'        |     | 4,150  | 2,675   |           |              |              |     |        |        |
| 30212 (C) | IH           | #10        |     | 1,250  | 1,100   |           |              |              |     |        |        |
| 30017 (A) | Great Plains | 15' W/CPH  |     | 27,500 | 20,900  |           |              |              |     |        |        |

### USED PLOWS



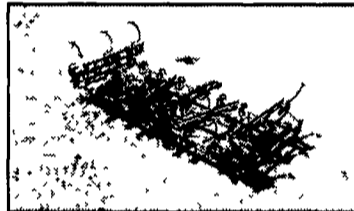
20998 (A) Brillion 12 Shanks  
Was \$1,650 Sale \$1,450



T1114 (B) Krause, 4517  
Price Was \$12,000  
Sale Price \$9,975

| Unit #    | Make       | Model      | Yr. | Was    | Sale    |
|-----------|------------|------------|-----|--------|---------|
| 30211 (C) | IH         | 440        |     | 800    | 750     |
| 14205 (B) | IH         | 560        |     | 1,300  | 1,200   |
| 5404 (C)  | John Deere | F1350-1450 |     | 1,800  | 1,800   |
| 14342 (B) | Sunflower  | 21'        |     | 4,600  | 4,300   |
| 14255 (B) | United Far | 25'        |     | 3,500  | 3,000   |
| 10478 (B) | Sunflower  | 27         |     | 5,500  | 2,500   |
| 12862 (B) | Krause     | 4320A      |     | 10,500 | 9,250   |
| 20664 (A) | Krause     | 4515       |     | 12,000 | 6,000   |
| 15157 (B) | John Deere | Ripper     |     | 2,900  | 2,500   |
| 20048 (A) | DMI        | Tiger II   |     | 9,500  | \$8,500 |
| 14032 (B) | DMI        | Tiger II-7 |     | 10,500 | 8,750   |

### USED FIELD CULTIVATORS



20661 (A) IH 12'

21268 (C) Brillion 18 Ft. Was \$900 Sale \$900  
 15304 (B) Wilrich 23' Was \$3,200 Sale \$2,900  
 14827 (B) John Deere 26' Was \$5,000 Sale \$4,500  
 11860 (B) Wilrich 28' Was \$4,800 Now \$1,900  
 20479 (B) Wilrich 31' Was \$7,500 Now \$6,350  
 14502 (B) Wilrich 35' Was \$5,300 Sale \$4,900  
 14848 (B) Brillion 6R Was \$1,100 Sale \$950  
 11942 (B) John Deere 6RN Was \$18,50 Now \$1,275

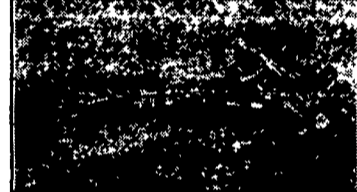
### USED CULTIPACKERS



20381 (A) Krause 4428  
Price Was \$7,900 Sale Price \$6,900



11968 (B) Brillion 36'N  
Price Was \$7,500 Sale Price \$5,500



14107 (B) Brillion 32'ND Was \$7,500 Sale \$7,000



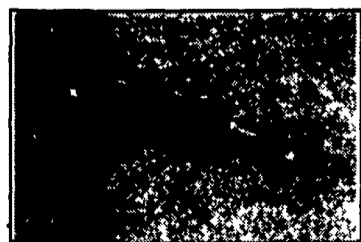
11967 (B) Brillion 28'N  
Was \$6,500 Sale \$5,500

| Unit #    | Make       | Model  | Yr. | Was     | Sale    |
|-----------|------------|--------|-----|---------|---------|
| 14783 (B) | Brillion   | 14'    |     | \$2,200 | \$1,950 |
| 21415 (C) | Brillion   | 16'    |     | 1,000   | 800     |
| 13160 (B) | Brillion   | 21' CF |     | 4,500   |         |
| 13303 (B) | Brillion   | 21' CF |     | \$4,500 | \$3,690 |
| 15165 (B) | Brillion   | 23'    |     |         |         |
| 15289 (B) | Brillion   | 23'    |     | 2,000   | 1,750   |
| 12851 (B) | Brillion   | 23'ND  |     | \$6,900 | \$6,500 |
| 15232 (B) | Unverferth | 24'    |     | 4,900   | 3,600   |
| 15293 (B) | Farm Hand  | 25'    |     |         |         |
| 14108 (B) | Brillion   | 25'S   |     | 3,900   |         |
| 20481 (B) | Unverferth | 31'    |     | 3,500   | 2,975   |
| 11296 (B) | Unverferth | 4'     |     |         |         |

| Unit #    | Make        | Model | Yr. | Was    | Sale   |
|-----------|-------------|-------|-----|--------|--------|
| 14711 (B) | New Holland | 85    |     | 975    | 875    |
| 30237 (C) | New Holland | 850   |     | 2,500  |        |
| 14975 (B) | Gehl        | 1540  |     | 2,200  | 1,900  |
| 30203 (C) | New Holland | 23    |     | 300    |        |
| 21212 (C) | New Holland | 27    |     | 500    |        |
| 20571 (A) | Hesston     | 7155  |     | 11,500 | 10,500 |
| 30150 (C) | New Holland | 770   |     |        |        |
| 13846 (C) | New Holland | 900   |     | 16,500 | 14,900 |
| 20572 (A) | Dion        | S45   |     | 1,650  | 1,500  |

| Unit #     | Make        | Model   | Yr. | Was     | Sale    |
|------------|-------------|---------|-----|---------|---------|
| 14710 (B)  | New Holland | 273     |     | \$2,500 | \$2,300 |
| 20823 (BA) | New Holland | 278     |     | 2,500   | 2,000   |
| 20906 (BA) | New Holland | 326     |     | 8,900   | 8,500   |
| 20784 (BA) | Hesston     | 4600    |     | 5,500   | 5,200   |
| 14960 (BC) | New Holland | 575     |     | 7,900   | 7,500   |
| 14824 (BB) | New Holland | 850     |     | 2,200   | 1,900   |
| 15190 (BB) | Case IH     | 8580    |     |         |         |
| 14206 (B)  | New Holland | D2000   | 94  | 39,500  | 38,500  |
| U6970 (A)  | Woods       | 120     |     | 2,100   | 995     |
| 21213 (C)  | Schultz     | 10 Ft.  |     | 1,650   |         |
| 13220 (B)  | Brillion    | 12'     |     | \$3,900 | \$2,900 |
| 12920 (B)  | Rhino       | 15'     |     | 4,900   | 3,500   |
| 13561 (B)  | John Deere  | 1508    |     | 3,500   | 2,900   |
| V9289 (A)  | Bush Hog    | 20'     |     | 5,500   | 3,375   |
| 13006 (A)  | Bush Hog    | DM80    | 96  | 4,500   | 3,875   |
| 30020 (A)  | Landpride   | FDR1548 |     | 975     |         |
| 20854 (A)  | Rhino       | FLEX15  |     | 2,900   | 2,300   |
| 21304 (A)  | John Deere  | 1360-9' | 91  | 7,500   | 7,500   |
| 13775 (B)  | Hesston     | 8200    | 90  | 11,500  | 10,300  |
| 30139 (C)  | Case IH     | 8350    |     | 3,850   | 3,500   |

11926 (C) IH 1190  
Price Was \$3,500 Sale Price \$3,200



13006 (A) Bush Hog DM80 96 Yr.  
Was \$4,500 Sale \$3,875

**Listed Equipment Is Currently Available In**  
**A - Intercourse B - Middletown**  
**C - McAlisterville**

**MEMBER**  
 INC.  
 THREE LOCATIONS  
 MIDDLETOWN, DE (302) 78-9555  
 McALISTERVILLE, PA (717) 463-2191

Authorized UPS Station

VISA MasterCard

