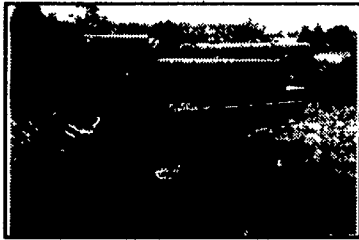


Best Buys in Used Equipment

NEW YEAR'S WHITE TAG SALE Everything Specially Priced On White Tags

USED CASE IH COMBINES



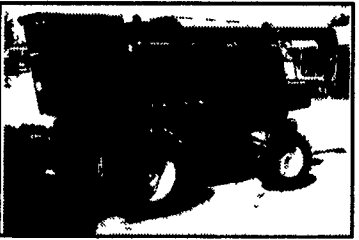
13011 (B) Case IH 1640-2 WD, Yr. 86, Price Was \$47,000
Sale Price \$44,500



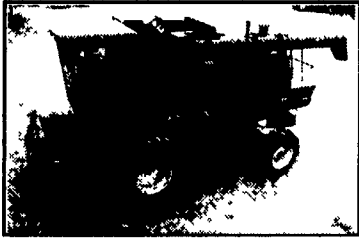
21391 (A) Case IH 1660 Yr. 90, 1953 Hrs., Was \$69,900
Sale Price \$67,000



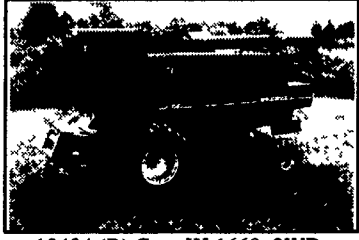
21357 (A) Case IH 1660, 88 Yr., 1952 Hrs. Was \$59,000
Sale \$54,000



20553 (A) Case IH 1660 4WD, 89 Yr., 2747 Hrs.,
Price Was \$71,500 **Sale Price \$67,500**



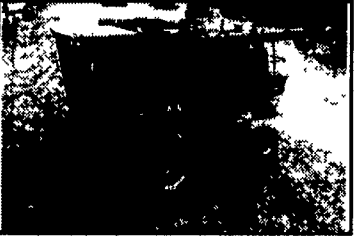
20999 (A) Case IH 1660 4WD, 91 Yr., 2000 Hrs. Was \$72,500
Sale \$69,500



13434 (B) Case IH 1660, 2WD, 89 Yr., 2154 Hrs.
Price Was \$66,000
Sale Price \$59,000



13922 (B) Case IH 1680, 92 Yr.
Price Was \$85,500
Sale Price \$77,900



11677 (A) Case IH 1680-2WD, 87 Yr., 1850 Hrs.
Price Was \$63,000
Sale Price \$57,000

Unit #	Make	Model	Yr.	Hours	Was	Sale
20426 (A)	Case IH	1660 2WD	86	6021	45,000	39,500
21374 (A)	Case IH	1660 2WD	89	2078	65,000	63,000
20953 (A)	Case IH	1680	90			
20963 (A)	Case IH	1680 2WD	90	2279	72,000	69,000

13907 (B)	Case IH	1680, 4WD	90	74,000	73,500
15266 (B)	Case IH	2166	95	417 120,000	117,000
14448 (A)	Case IH	2188 4WD	96	387 141,000	139,000

USED LANDSMANS



14501 (B) Krause 6161XT, 97 Yr.
Was \$22,500 **Sale \$21,500**

14348 (B) Sunflower, 18', 96 Yr.
Was \$15,000 **Sale \$14,250**

14660 (C) Krause 3112, 97 Yr.
Was \$7,500 **Sale \$7,000**

14484 (B) Krause 3124 Was
\$9,800 **Sale \$8,500**

14047 (B) Krause 3124A Was
\$15,000 **Sale \$12,300**

13926 (B) Krause 3127A Was
\$13,500 **Sale \$10,900**

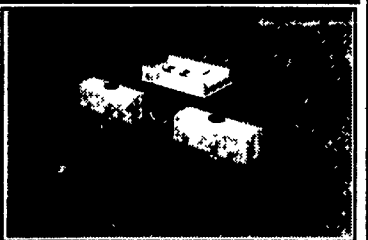
15205 (B) Krause 6118 Was
\$19,800 **Sale \$18,900**

14507 (B) Krause 6164, 94 Yr.
Was \$22,000 **Sale \$21,000**

USED JOHN DEERE AND OTHER COMBINES

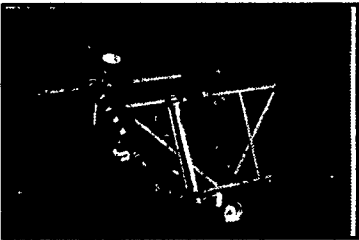
Unit #	Make	Model	Yr.	Hrs	Was	Sale
U9764 (A)	John Deere	6600	77	3046	13,500	8,850
U9922 (A)	John Deere	6600	76	3886	7,000	5,250
21442 (A)	John Deere	6600	78	3586	5,200	4,900
15158 (B)	John Deere	6600	74		4,400	3,900
U9639 (A)	John Deere	7700	77	2803	17,500	9,975
U9841 (A)	John Deere	7720	79	2696	30,000	19,500
15281 (B)	John Deere	7720	81		12,500	11,500
13422 (B)	John Deere	7720-2WD	80		24,300	19,500
13140 (C)	John Deere	7720-2WD	84		37,000	29,900
15295 (B)	John Deere	9500	91		71,000	69,900
U9184 (A)	Massey Ferg	550	80	1942	19,500	9,875
U1043 (A)	Allis Chal.	L2-2WD78			17,900	9,900
21439 (A)	Allis Chal.	M3 2WD83		2300	22,500	20,000

USED PLANTERS

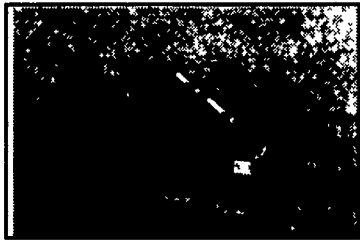


20548 (A) Case IH 900
Price Was \$15,400
Sale Price \$13,500

USED DISK HARROWS



14500 (B) Krause 1966-31'
Was \$5,250 **Sale \$5,000**



20813 (A) Krause 2242A
Was \$5,200 **Sale \$4,975**



13769 (B) White 272-30.5'
Price Was \$4,500
Sale Price \$3,750

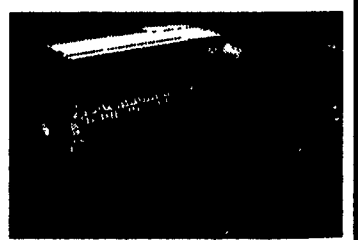
Unit #	Make	Model	Yr.	Was	Sale
13918 (B)	Miller	20'		5,500	3,900
13079 (B)	Midland	20'		5,500	3,800
15208	John Deere	230-27'		3,900	3,600
T5858 (A)	Krause	2416		9,800	2,950
20272 (A)	Krause	2416-26'		16,000	14,950
13842 (B)	Krause	2442		18,900	16,300
13841 (B)	Krause	2442		18,900	16,300
15213 (B)	Krause	2442			
15024 (B)	Allis Chalmers	26'		1,800	1,700
14096 (B)	Krause	31'	82	9,500	8,900
20229 (A)	John Deere	310-12'		3,500	2,200
20995 (A)	Krause	3206		5,300	5,000
20974 (A)	Krause	3206-20'		6,900	6,000
13071 (B)	John Deere	330-25'		4,900	2,900
15141 (B)	IH	475		2,400	2,200
20755 (A)	IH	475-18'		5,900	5,700
21332 (A)	Krause	4924	84	7,900	7,450
20299 (A)	Krause	4927A	91	14,500	13,300
20760 (A)	Krause	4939-18'		13,500	12,900
20980 (A)	Krause	4941N	94	14,900	14,300
15206 (B)	Case IH	496-23'		3,300	2,900
15097 (B)	Case IH	496-26'		6,900	6,500
12860 (B)	Krause	4966		16,900	14,900
20657 (A)	IH	500		2,900	2,500
21414 (C)	Massey Ferguson	510-14'		3,500	3,100
21413 (C)	Massey Ferguson	620-12'		2,700	2,500
14658 (B)	Massey Ferguson	820-25'		4,600	4,475
13848 (B)	Case	DOT 25'		6,900	6,200
14092 (B)	Case	K-23-23'		2,500	2,200
10096 (B)	Case	KB23		4,900	4,500
21343 (A)	New Holland	TD200-12'		6,000	5,600
20653 (C)	Krause	1480-10'8"		6,800	6,500
21320 (B)	Krause	1497-13'		7,150	6,950
13332 (B)	Pittsburgh	16'		3,200	1,975
14349 (B)	Pittsburgh	16'		2,500	2,300
21317 (A)	Krause	1740-13'			
14143 (B)	Allis Chalmers	18'		3,000	2,750
15239 (B)	Deutz Allis	18'		3,500	2,900
20942 (C)	Krause	1921		7,900	7,000
21345 (A)	Krause	1921-18'		9,900	9,500
30187 (C)	Krause	1924-21'		8,500	7,900
13774 (B)	Krause	1927-27'		8,200	7,350
15189 (B)	Krause	1956		3,200	2,900
9636 (B)	Krause	1966	10	13,000	5,900

12955 (B)	Allis Chalmers	331-11R		\$4,500	\$3,275
21231 (C)	Deutz Allis	385		\$4,500	\$3,900
14494 (B)	New Idea	4RN		\$5,800	4,900
30016 (A)	White	5400			
14708	John Deere	7000		\$5,900	\$5,500
21340	Case IH	900-6RW	90 Yr.	\$9,000	8,500
12657 (B)	Allis Chalmers	AC 333	80 Yr.	\$4,800	\$2,900
12648 (B)	Allis Chalmers	AC 333			\$2,700

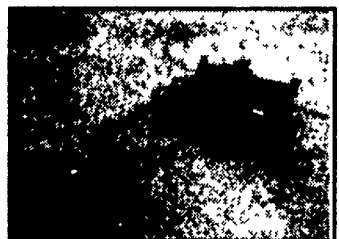
USED HAY & FORAGE



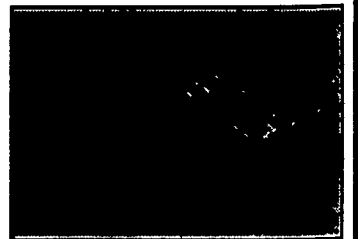
30038 (BC) New Holland 273



10473 (BC) New Holland 320
Price Was \$4,500 **Sale Price \$2,675**



20817 (A) Case IH 8312



13783 (A) New Holland 499
Price Was \$7,200 **Sale Price \$5,900**

All New & Used Products
Backed By
Hooper Parts & Service

HOOPER
C.B. HOOPER & SON, INC.
INTERCOURSE, PA

Authorized
UPS Station



Visit Our Website www.hooper.com

INTERCOURSE
(717) 768-8231

MIDDLETOWN, DE
(302) 378-8555

McALISTERVILLE, PA
(717) 463-2191

CASE IH