

**FOR SALE I-BEAMS & GRATING (USED)**

15¢ per pound		
2	12" x 6 1/2" x 35 lb.	21'7" long
1	12" x 6 1/2" x 35 lb.	19'8" long
4	12" x 5" x 31 lb.	16'7" long
1	12" x 4" x 19 lb.	8'11" long
1	12" x 4" x 19 lb.	7'9" long
\$2.00 per sq. ft.		
3	24" x 20' x 1"	bar grate
2	24" x 8' x 1"	bar grate
1	24" x 11' x 1"	bar grate
1	24" x 14' x 1"	bar grate
1	30" x 20' x 1"	bar grate
2	30" x 5' x 1"	bar grate
2	30" x 7' x 1"	bar grate
6	12" x 12' x 2"	galv. grip strut

**610-754-7541**

**STEEL BUILDINGS**

**Stay Warm this Winter in Your New Steel Building!**



Call for your FREE Brochure!

Engineered for your loads & codes!  
Your choice of Style, Accessories, and Colors!  
Complete Stamped Blue Prints Included!  
Winter or Spring Deliveries Available!



**800-553-7833**

**INDEPENDENCE STEEL PRODUCTS NORTH EAST, INC.**

**ROHRER CONSTRUCTION**

Specializing in Agricultural Post-Frame Construction

Hayler Barns • Equipment Sheds • Garages • Decks Metal Siding and Roofing

2459 Noble Road Kirkwood, PA 17536

Jerri Rohrer phone 717-529-0936 fax 717-786-7872

**STEEL BUILDINGS Factory Direct Prices**

Industrial - Commercial - Agricultural

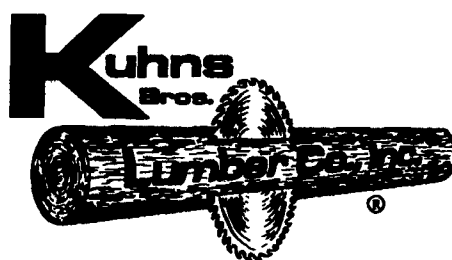
In Stock Metal Building Supplies: Girts, Purlins, Sheeting, Etc.

**Scenic Ridge Construction**  
48 Queen Road  
Gordonville, PA 17529

Contact Elam or Carl  
Phone: (717) 768-7522  
Fax: (717) 768-8522



**BUILDINGS AND SUPPLIES**



**• BUYING STANDING TIMBER and LOGS**

**CALL 1-800-326-9542**

LEWISBURG, PA  
Monday - Friday 7 AM To 5 PM

**NATIONAL SALVAGE**

Free demolition plus cash for the right barns or farmhouse.  
**(330) 922-9844**

**WANTED**

Original attic floor, chestnut beams, salvage to barns, factories, warehouses, log houses, summer kitchens.  
**Paying top \$.**  
**800/765-3966**

**GRABER SUPPLY**

491 Gap Newport Pike  
Atglen, Pa. 19310

800-964-1550  
610-593-3500

... LOCATION...

20 miles East of Lancaster, PA on Hwy 41  
or 27 miles North of Wilmington, Delaware

**Post & Frame Building Materials Metal Roofing Sale**

- Painted Galvanized 29 GA. #2.....\$40.43 sq.
- Prime Painted Galvanized 29 GA.....\$43.59 sq.
- Premium Painted Galvalume 29 GA.....\$46.75 sq.

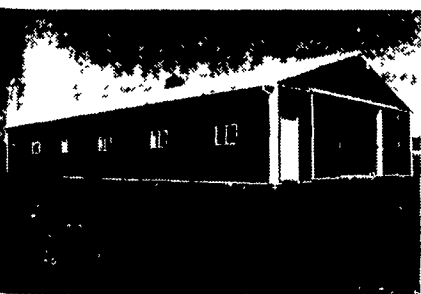
- 26 & 29 Gauge
- Window Doors
- Insulation
- Overhead Garage Doors
- Electric Openers
- Trusses



**Conestoga Buildings Inc.**

- Customized Pole Barn
- Complete Building Packages
- Horse Barns
- Residential Garages
- Storage Buildings

10% Discount On **EQUUS** QUALITY STALL SYSTEMS



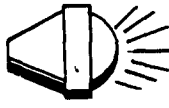
FOR A FREE ESTIMATE OR BROCHURE  
1-800-544-9464  
OR  
717-354-2613



**We Specialize In Pole Buildings**



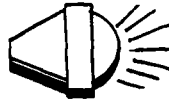
**Equipment Sheds**



**Horse Barns**



**Garages**



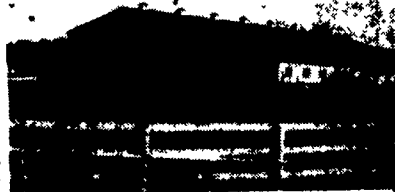
**Arenas**

Financing Available

**Stoltzfus Builders**

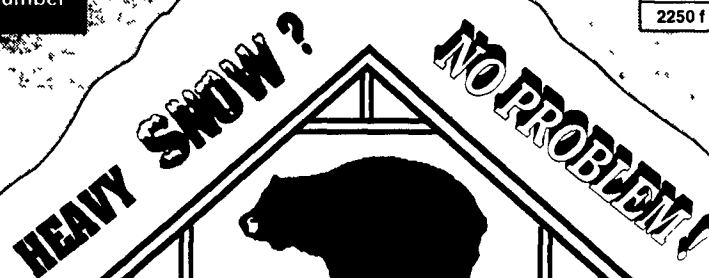
50 North View Rd.  
Lititz, PA 17543  
Free Estimates  
Call Anytime

**717-664-3540**  
**1-800-551-7724**



It Pays To Use MSR Lumber

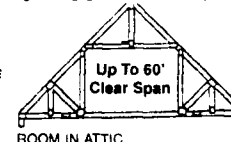
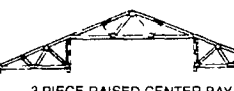
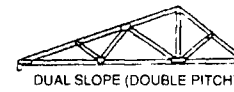
MACHINE STRESS RATED  
LMA5 SPS 2 S-Dry  
2250 f 1.9E



R.D. #3 Box 370-A1 • Cogan Station, PA • 17728

**BLACK BEAR TRUSS CORP. "OUR TRUSSES BEAR UP"**

- ✓ Laser-QUICK
  - ✓ Laser-STRAIGHT
  - ✓ Bull-STRONG
- On-Site In Ten Days  
with MSR-SPF Lumber
- ✓ Crane Optional with Delivery
  - ✓ Cellular Phones in all Delivery Trucks



UP TO 80' CLEAR SPAN  
HORSE BARN • RIDING ARENAS • COMMERCIAL & RESIDENTIAL

HOURS  
Monday-Friday  
7:00am to 6:00pm  
Saturday By Appt.

For a FREE Quote  
Call (717) 998-2391  
or 1-800-326-9689  
Fax (717) 998-9875