

JD 440-I Loader, PS, 3pt, rebuilt shuttle, mechanically solid, \$4150; 50 JD B, excellent tin & tires, \$1275 OBO. Merv's Painting 717/733-0575.

JD 443 Corn Head, \$3200. 717/437-2604.

JD 443 corn head, completely rebuilt, new rolls, gathering chains, idlers, seals, paint, decals, sharp, \$4500 firm, w/warranty for 1 season.

FARM EQUIPMENT REPAIR. 717-249-2317

JD 50, from Minnesota, NF, power steering, rock shaft, loader, showroom condition, one owner, \$3,250. 410-833-9091

JD 530, 3pt, narrow front, \$3600; 1953 JD G, runs good, \$2500. Fahnestock Farm Service, 717-866-7066.

JD 5500 4x4, 392 hrs, canopy, dual remotes, \$26,500 OBO. 410/343-1440.

JD 620, WF w/loader & grapple, 3 pt., rock shaft, fresh engine & trans., OH, from N. Dakota, \$3,300. 410-833-9091

JD 6400 new tractor, 4x4, open station, left hand reverser w/JD 640 loader, \$41,500. 301-733-2195

JD 643 Lo-tin oil bath, good condition, 1st \$7600 takes it. 800/919-3322.

JD 720 diesel, standard, fair condition, \$3800 OBO. 717-530-9459

JD 730D pony start, good tires/ tin, runs but needs some work, \$3,100. 1947 Ford truck, PTO, flat head, V-8, 12' flatbed, dump hinges, \$1,250. Montco, (215)234-9334.

JD 830 3-cylinder, diesel tractor w/rebuilt engine, \$5800. 717-776-7725

JD 90 skid loader. 100 hrs. on new engine, excellent rubber, two buckets. Asking \$3,500. (610)948-8217.

JD LA, running, new tires, complete tin, no serial tag, spare parts, \$2000; LUC power unit, not running, \$200. 609/737-1781.

JD single wheel, complete, to fit tricycle type tractor. Adams Co., (717)677-7282.

Keenan #100 TMR mixer, used 8 months, mixes TMR or soda grain. NO Sunday calls. 717-597-4001

Kelly Ryan centerline bagger, 8' deluxe, 1 year old. (717)222-9090.

Kubota M4050DT, 4WD tractor; NI-10A spreader, rebuilt, air, tires; Ford plow 3-14, 3ph; 9' Disc Pittsburgh; 5' Lucknow snowblower, New; Ford 532 baler. All in excellent condition. 717-658-3186 or 717-658-6300.

Land Plane, semi-mounted, 10' blade, hyd. transport, \$1100 OBO. 410/822-7578 after 6pm.

Large Selection JD & Gleaner Corn Heads and Grain Heads. Reduced for post-season closeout sale. Trades accepted, Financing Avail. Zeisloft 800/919-3322.

LELY ROTERA 5', nice, \$750. 410-833-9091

LOADER ATTACHMENT IH 2000 w/2 buckets, nice, \$1,850. 410-833-9091

LOADER ATTACHMENT Case IH 510, QT bucket, bin in fire, needs cylinder repair, hoses & paint, \$1,400. 410-833-9091

LOADER TRACTOR MF 30B, diesel industrial, no 3 pt. or PTO, \$3,500. Backhoe Available. 410-833-9091

LOADER TRACTOR JD 2030, diesel, 8 spd w/146 loader, low hrs., \$9,500. 410-833-9091

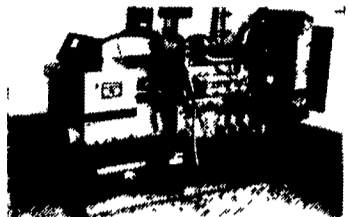
LOADER TRACTOR JD 2840, hi-low, 80% rubber, ROPS w/Bush Hog 2400 QT loader, solid, \$10,750. 410-833-9091

Year Round Cab for JD 4020.....\$1,500  
IH 966, Rebuilt Engine, New Clutch, Rubber & Paint.....\$13,500  
IH 656 Gas.....\$2,900  
IH 544, Excellent Condition.....\$7,500  
(2) IH 686, Showroom Condition.....\$11,900 ea.  
(8) Year Round Cabs.....\$1,500 & up  
IH 5498, Cab & Air.....\$26,000

Financing Available  
717-776-5515  
**JEFF SHOWAKER**

Clean off-the-farm, field test tractors  
Most Reconditioned And Sold With Warranty  
Positively no out-of-state Personal checks

**POWER SYSTEMS ELECTRIC, INC.**



SPECIALIZING IN GENERATOR SALES, SERVICE AND RENTALS

(717) 933-5617 (800) 875-6964

(1) 175 KW Volvo Diesel, Used,  
130 KW, 3 phase Onan  
35 KW Chrysler L-p-g,  
New PTO Generators In Stock

New & Used Transfer Switches

IH 1586 cab	\$11,000
IH 1466	\$7,500
IH 1566 cab, radials	\$9,800
IH 1086 cab fresh engine overhaul	\$13,000
IH 1066 cab	\$9,500
IH 856 cab	\$6,500
MF 1080	\$3,900
Ford 7700, Cab	\$11,000
Kubota M 7950, 4WD w/loader	\$16,900
JD 2640 rebuilt engine	\$11,900
Ford 5000, recent BSD engine, radials	\$6,500
IH Hydro 70	\$6,000
Ford 5530, 4WD, High Clear, 760 Hrs, Creeper Gear	\$24,000
IH 574D, recent overhaul	\$6,500
IH 574 G, fresh, overhaul	\$6,000
CIH 585, 4WD	\$12,900
JD 2355 4WD w/loader	\$17,500
Ford 3600 w/loader	CALL
Int 504	\$3,000
Case 1194, cab	\$6,300
Int 444 w/loader	<b>SOLD</b> \$6,500
Int 404	\$3,500
Case 530 w/Ldr, fresh engine overhaul	CALL
Farmall 350 w/loader	\$3,000
Ford 8N, 9N	CALL
Farmall H	\$800
(2) JD 420	\$3,300 & Up
Kubota B7100, 4WD, Loader	\$6,500
(2) NH 785 skid	\$12,000 & \$14,000
Case 580B Backhoe	\$7,500
JD 450C All Angle Dozer, Nice	\$21,000
CIH 2250 QT loader	<b>SOLD</b> \$3,250
New Westfield grain auger, 8"x51' PTO	\$2,600
Grain auger, 5"x45'	\$500
JD F930 mower & Snowblower	\$7,500
NH 492 haybine	\$6,000
Int 2400 round baler	\$3,500
JD 410 round baler	\$3,900
JD 7000 planter	\$3,950
UFT Trailer type fertilizer spreader	\$2,000
NI 3810 "V" Spreader	\$2,000 OBO
Int. 700 5 bottom plow	\$1,800
Brillion cultipacker	\$2,800
Brillion 15' transport packer	\$2,500 OBO
White 14' disc	\$2,500 OBO
20' Batwing mower	\$6,500
Rotary Mowers, 8', 5' 4'	CALL
Snow Plows: Tractor Mounted Power Angling	\$1,500
Princeton Tree/Shrub Planter w/5 Shoes	\$2,000
Irrafrance Irrigation System, Complete w/Traveller, Pump, Pipe, Etc., Ex. Cond.	\$19,800
Round bale transport wagon, holds 6 blades, hyd. load & unload	\$2,000 OBO
(3) Tree & shrub digger heads, 20"-40"	CALL
(2) Tree & Shrub planters	CALL
Rogers Lo-Boy trailer	\$3,500
Aztec 48' flatbed trailer	CALL
Freuhoff 36' flatbed trailer	CALL
'74 GMC 9500, 238 Detroit, 5+2, Good Rubber	\$6,000
1976 C65 Spray Truck, 1000 gal. tank, John Blue sprayer, 60' hyd. booms, new engine, drive train	\$8,000 OBO

We now offer financing & lease programs

**LOG BARN Equipment**  
109 Quarry Dr., Bloomsburg, Pa. 17815  
(717) 387-1779

*The Diesel Doctor Says*

"Come to  
**FAY DIESEL SPECIALISTS**  
to have your diesel injection pumps rebuilt and recalibrated."

Member of  
**ADS**

Satisfaction Guaranteed for over a decade

Call Toll-Free 1-800-864-7723

"Lancaster County's Best Fuel Injection Shop"  
1030 Main Street (Rt. 23), Blue Ball, PA 17506-0426  
• 717-354-2016

**COUPON SPECIAL**  
Present this coupon at time of rebuild and get \$35 off

**STOUFFER BROS. INC.**  
1066 Lincoln Way West, Chambersburg, PA  
Phone 717-263-8424

**FORAGE**  
Gehl 1560 Forage Blower IH 781 Harvester 2 Row, Pick-up  
NH 716 Forage Box JD 3960 Harvester w/Attach.

**MOWER CONDITIONERS**  
Gehl 2170 Mower Conditioner Hesston 1150 Mower Conditioner  
NH 495 Haybine Vicon 281 Disc Mower  
Hesston 6200 Self-Propelled Deutz Allis SM 70RC Disc Mower/Cond.  
12 Ft.-V.good cond.

**SKID LOADERS & UTILITY**  
Case 580C Backhoe Case 580K 4WD, Std. Hoe  
Gehl 4625 Skid Loader (3) NH 455 Skid Loader  
(3) Gehl 4610 Skid Loader Ford 555B 4WD, Backhoe  
Case 450B Crawler/Loader Case 580K 4WD, Ext. Hoe  
Case 25-4 Davis Trencher Gehl 3825 Skid Loader  
Case 1840 Uni Loader

**MISCELLANEOUS**  
Gehl 315 Spreader Landpride FDR1548 Rear Mower  
Artsway 800B Mixer Feeder Mower  
6'x12' Landscape Trailer NI 382 V Spreader  
Landpride LR1572 Rake JD 1250 Mounted 4 Bottom Plow  
Landpride RTA1042 Tiller

**TRACTORS**  
David Brown 1212 Case 2094 Tractor  
JD 4010 Tractor Case 995 Tractor w/Loader

**LAWN & GARDEN**  
Case 224 Tractor w/Mower (2) Case 220 Mower  
White 18 HP Mower (2) Cub Cadet 1863 Tractor w/Mower  
White Field Boss 16 IH Cub Cadet 682 Mower w/44" Mower  
Kubota B1550 HSD8 Tractor IH Cub Cadet 682 Mower w/44" Mower  
Kubota B1550 DT Tractor (2) Kubota G1900 w/60" Mower & grass catcher.  
Kubota G5200 w/Mower Cub Cadet 1811 Mower  
Ford YT16 Mower  
JD 317 Mower

Welger RP 200 master cut baler, used. Lely 280C 3pt discbine mower, demo. Call (717)369-5702.

WHEEL LOADER TEREX 72-40, art. w/3.5 yard bucket, no ROPS, \$5,500. 410-833-9091

**Best Buys In Used Equipment**

**CALL FOR SPECIAL DEALS - NEW TRACTORS**  
(2) Case IH 5230 Maxum tractors, cab, 4WD  
Case IH 5250 cab, 4WD  
Case IH 8930 cab, 4WD

**TRACTORS**  
Case IH 7120, 2WD w/duals  
Case IH 9150 tractor, Steiger, 4WD  
Case IH 7110 MFD, dual wheels  
(2) Case IH 5130 Maxum MFD, ROPS  
MF 1135, 2WD, w/ cab  
MF 2705, 2WD, w/ cab  
Farmall Cub w/cultivator, plow & snowblade  
IH 5288 w/duals cab, air  
1994 Case IH 695, ROPS, 1780 hrs

**COMBINES & HEADS**  
IH 1420 combine w/15' 820 head  
New Case IH 2166, 2WD, 17 1/2' 1020 head, 270 hrs (demo)  
New Case IH 2166, 4WD 20', 1020 head, 240 hrs (demo.)  
(3) Case IH 1640 combine w/1020 grain head 15'  
Case IH 1640 combine w/1020 grain head, 17 1/2'  
Case IH 1644 combine w/1020 grain head 17 1/2'  
MF 510 combine diesel, 13' head  
IH 844 corn head, 4R, 36"  
Case IH 1640 combine w/1020 grain head, 15', 1719 hrs  
IH 815 combine, w/820 grain head, 13'  
White 8600 w/grain head

**HAY & FORAGE**  
IH 45 baler  
NH 273 baler w/thrower (W)  
NH 320 baler (W)  
NH 467 haybine (W)  
Fox 2310 Forage Harvester, 2R (W)  
NH 425 Wire Baler (W)  
NH 718 Forage Harvester (W)  
Case IH 3650 Round Baler (S)  
NH 282 Baler w/thrower (W)

**LAWN & GARDEN**  
JD F510 front mount, 38" mower deck & snowblower  
Cub Cadet 2160, 46" mower  
Cub Cadet 1320 w/46" mower deck & bagger  
JD tiller fits on JD 110, 112 tractor

**IRRIGATION EQUIPMENT**  
Bauer 125-340DT hard hose, turbines  
Bauer 110-310 P hard hose  
Capran D2/50 PTO pump  
Detroit V871 diesel power unit  
Case IH 4390 power unit

**MISCELLANEOUS**  
Case IH 18' 7", 3800 disc harrow  
Unverferth Rolling Harrow II, 24'  
Unverferth Rolling Harrow II, 27', like new  
Unverferth Rolling Harrow II, 21'  
AC 600 no-till planter, 9R w/markers  
IH 400 Cyclo planter, 4R 36" w/fertilizer  
IH 365 S-tine field cultivator, 19"8"  
Case IH 568 seed bed conditioner, 4R  
Brillion 24' crow foot packer  
Byron 1R sweet corn harvester, 3 pt. mounted hitch  
IH 140 4X16 roll over plow  
MF 620 disc harrow, 20'  
IH 800 plate planter 4R, 36" w/fertilizer, granular insecticide  
FMC Sprayer, 400 gal w/hand gun & Contental engine  
FMC Sprayer, D060, 600 Gal Tank, 72' Hyd Boom

**Farm-Rite inc.**  
Agricultural Equipment, Supplies & Services  
122 Old Cohansey Rd. 109 E., Avenue  
Shiloh, NJ 08353 Woodstown, NJ 08098  
1-800-752-6373 1-800-848-5051

**PPS PROGRESSIVE PRESSURE SYSTEMS**  
1248 EAST NEWPORT ROAD  
LITITZ, PA 17543

Pressure Washers • Water Recycler  
Sales & Service

Custom Design  
"A Full Line of Pressure Washers & Parts"

E-Mail "progressive" Website www.lanz.com

717-626-5511 717-626-5098

**DECORATIVE**  
50 foot of Private Label 1/2" year \$49.00  
Quick Couplers Matched Set \$4.95