

**National Egg Market**  
ATLANTA, GA  
DECEMBER 23, 1997

NATIONAL EGG MARKET - AT A GLANCE:

Prices were unchanged to lower for the large sizes on the East Coast, unchanged elsewhere. The market tone was steady to weak with the large sizes in the weakest position. Demand ranged light to seasonally very good, mostly moderate to good, and best where featured. White graded egg supplies were mixed from closely balanced to fully adequate, and ungraded eggs were at least adequate; brown egg supplies remained no more than adequate. Breaking stock supplies were adequate to ample for the light demand, and the trade sentiment was no better than steady; prices were unchanged to lower. Light type hen offerings were at least adequate for reduced holiday processing schedules.

\*\*\*ANNOUNCEMENT\*\*\*

The President has issued an Executive order declaring Friday, December 26, a holiday. In observance of the holidays,

Poultry Market News will be closed December 25-26. Reports normally released Friday, December 26 will be issued Wednesday, December 24, if sufficient information is available. If you have questions regarding this report, call the telephone number listed on this report.

**NE Chicken Parts 1&2**  
ATLANTA, GA  
DECEMBER 23, 1997

NORTHEAST BROILER/FRYER PARTS - PART I FEDERAL-STATE

Trucklot buying activity was irregular with buyers filling orders selectively. Offerings were limited with most traders cautious in their buying. Retail and distributive movement was about moderate with interest continuing to center around holiday items.

The market tone was mostly steady. PRICES PAID PER POUND, ICE PACKED AND CO2 PACKED BROILER/FRYER PARTS, DELIVERED TO FIRST RECEIVERS IN POOL TRUCKLOT AND TRUCKLOT QUANTITIES.

ITEM CURRENT NEGOTIATED TRADING\*

- BREAST - B/S 135
  - BREAST - WITH RIBS 59-60
  - BREAST - LINE RUN 59
  - LEGS 41-42
  - LEG QUARTERS (BULK) 26-27
  - DRUMSTICKS 31-32
  - THIGHS 36-37
  - WINGS (WHOLE) 60-61
  - BACKS AND NECKS (STRIPPED) 12-14
  - LIVERS (5 POUND TUBS) 20-25
  - GIZZARDS (HEARTS) 50
- INCLUDES NEW YORK CITY METROPOLITAN AREA, NORTHERN NEW JERSEY, MASSACHUSETTS, CONNECTICUT, RHODE ISLAND, AND PENNSYLVANIA (NORTHEAST OF HARRISBURG).
- \* TODAY'S NEGOTIATED SALES AS OF 11:30 A.M.

\*\*ANNOUNCEMENT\*\*

THE PRESIDENT HAS ISSUED AN EXECUTIVE ORDER DECLARING FRIDAY, DECEMBER 26, A HOLIDAY. IN OBSERVANCE OF THE HOLIDAYS, POULTRY MARKET NEWS WILL BE

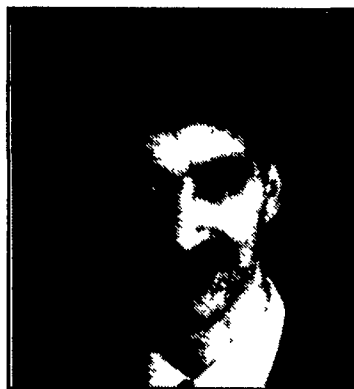
CLOSED DECEMBER 25-26. REPORTS NORMALLY ISSUED ON FRIDAY, DECEMBER 26 WILL BE ISSUED WEDNESDAY, DECEMBER 24, IF SUFFICIENT INFORMATION IS AVAILABLE. IF YOU HAVE QUESTIONS REGARDING THIS REPORT, CALL THE TELEPHONE NUMBER LISTED BELOW.

*Some markets not available due to the holiday*



# PENNFIELD DAIRY DAYS

## Featured Speakers



Dr. Normand St. Pierre, PAS



Dr. Mike Lormore, DVM



Dr. Timothy Snyder, PAS  
Mgr., Dairy Nutrition,  
Pennfield Corp.

## "MORE INCOME ON THE FARM"

- 9:30 A.M. • Milk, Coffee & Donuts  
Visit Displays  
Talk with speakers
- 10:15 A.M. • Meeting Begins Promptly  
**PENNFIELD - GROWING TO MEET THE DAIRYMAN'S NEEDS**  
Speaker: Don Mahlandt
- **\$100 MORE PROFIT PER COW PER YEAR**  
Speaker: Dr. Mike Lormore, DVM
- **"BEST VALUE" HEIFER AND DRY COW FEEDING PROGRAMS**  
Speaker: Dr. Tim Snyder, Ph.D.
- **ASSETS ALLOCATED FOR HEIFERS**  
Speaker: Dr. Normand St.-Pierre, Ph.D.
- Buffet Lunch
- **PROFITABLE FEEDING - HIGH PRODUCING COWS**  
Speaker: Dr. Tim Snyder, Ph.D.
- **KEEPING THE DAIRY FARM PROFITABLE**  
Speaker: Dr. Normand St.-Pierre, Ph.D.
- 2:15 P.M. • Adjourn

## MARK YOUR CALENDAR!



JANUARY 1998				
MON	TUE	WED	THUR	FRI
19 CORTLAND, NY Holiday Inn	20 MOUNT JOY, PA Country Table	21 MARTINSBURG, PA Morrison Cove Community Center	22 NEW HOLLAND, PA Yoder's Restaurant	23 MILLINGTON, MD Howard Johnson
FEBRUARY 1998				
MON	TUE	WED	THUR	FRI
9 LEBANON, PA Lebanon Valley Expo	10 TUNKHANNOCK, PA Shadowbrook	11 MILROY, PA Camelot	12 BIRD-IN-HAND, PA Plain & Fancy	13 CHAMBERSBURG, PA Le Masters Fire Hall



**Ladies Welcome:** The information presented at these meetings will be directed towards the **FAMILY DAIRY FARM** and its future. Since many wives play a key role in the Family Farm Operation, we would strongly urge both husband and wife to attend as the information presented will be for the "Management Team".



TO MAKE RESERVATIONS CALL 1-800-732-0467

**pennfield feeds**

Transportation Available