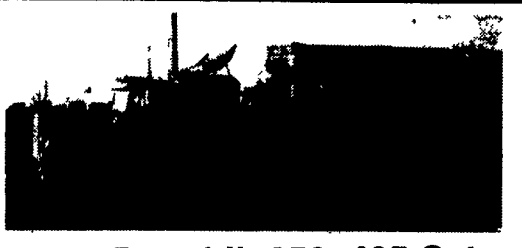


**1985 Mack Super Liner**  
 350 Cummins, 10-Spd. Trans., Good Rubber,  
 New Brakes, AC  
**\$12,500**  
**717-529-2512** No Sunday Calls



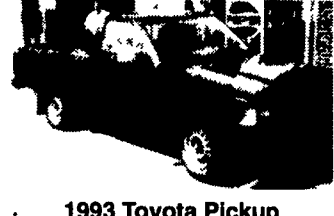
**1987 Peterbilt 359, 425 Cat**  
**63" Flat Top, Wetline,**  
**\$ 22,500**  
**(717) 665-6204**



**JCB Loader Model 520 M**  
 Four wheel drive, 42" Forks, rebuilt  
 engine, for height, 13'



**1973-75 Mack Cement Mixers**  
 10+11 Yard Barrels, 6 Spd., + 13 Spds, 44+  
 55,000 Lb. Rears, All Runs Excellent  
**Asking \$8,500**



**1993 Toyota Pickup**  
 4 Cyl., 5 Spd. Trans., AM-FM Radio,  
 A/C, Excellent Condition, High Mileage



**1977 Mack R Model tractors,**  
 300 engine, 5 spd., 38,000 lb. rears,  
 power steering



**New flatbeds available.**  
 Sizes currently available are 12', 14', 20',  
 22' and 24' Racks are also available



**2-Towmotor Forklifts**  
 4 cyl. flat head gasoline, 2000 lb.  
 capacity, 36" forks, solid tires.  
**Asking \$1,500 Each**

**1979 Crane Carrier**  
**Cement Mixer,**  
 10 Yd. Flex Mixer, 230 Cummins,  
 8 Spd. Trans., 44,000 Lb. Rears  
**Asking \$8,500**

**2000 lb. Yale Forklift**  
 4 cyl. gas, 36" forks, solid tires.  
**Pedestal Grinder**  
 Baldor 2 Hp., 3 phase, 220 amps

**Used Overhead Door For Sale**  
 16'H x 14'W  
**Asking \$550**

**Toledo Scale**  
 1,000 lb. Capacity  
**Oil Heaters**  
 250,000 BTU's

**Yale Electric Hoists**  
 1/2 ton cap., 440 volt,  
 single and three phase.  
**Asking \$350/ea.**

**We have Aluminum**  
**Tanker/Trailers**

**Wm. Cohen & Sons**  
**Thorndale, PA**  
**(610) 269-1298**  
**Call between 7 am - 4:30 pm**

**TOOL SHED OF AMERICA**

4294 E. HARRISBURG PIKE  
 DEPARTMENT LF CATALOG  
 MIDDLETOWN, PA 17057  
 (717) 944-0318  
 Route 230 Between  
 Elizabethtown & Middletown

**SAND BLASTERS & BLAST CABINETS**

**NEW GAS TANKS**

**NEW RADIATORS**

**SAVE \$\$\$**

**TOOLS AND EQUIPMENT**

**AUTOBODY PARTS, PAINTS & SUPPLIES**

**FREE CATALOG CALL OR WRITE NOW!!**

**MOST CLASS III HITCHES \$79<sup>99</sup> to \$89<sup>99</sup>**

**BUILD OR REPAIR YOUR TRAILER. WE HAVE PARTS.**

**USED 4x4's Pickup's, Bronco's & Blazer - Call For Our Low Prices**

**NEW UTILITY TRAILERS**  
 3,000 GVW, Extra Heavy Frames  
 w/Treated Lumber Deck, Lights,  
 Chains, Etc Included!!!  
 5'x10' Deck.....\$750  
 6'4"x12' Deck.....\$875  
 Add-On Landscape  
 Ramp/Gate.....\$145

**WE BUILD OUR OWN TRAILERS**

**"NEW" 16' Deck Car Hauler**  
 Has Two 24" Wide Diamond Steel Runners, Tube Steel Frame,  
 4-Wheel Brakes, Safety Breakaway Kit & Full Lighting  
 Beavertail & Ramps, Removable Left Fender & More For **\$1,750**

Hours: Tues.-Fri. 9 AM - 6 PM Saturday 9 AM - 2 PM Closed: Sunday & Monday

**PHONE 717-274-2000**

**Toll Free 1-800-650-1420**

**RTE. 422 WEST LEBANON, PA**  
 (Across From Lebanon Valley Mall)

**CAR VILLAGE**

**HEAVY DUTY TRUCKS**

**Business Hours Mon.-Fri. 9-9 Sat. 9-4**

**THIS IS ONLY A PORTION OF OUR HUGE INVENTORY**

<p><b>TOW MACHINE</b>  <b>92 DODGE CLUB CAB DUALY 4X4</b>                  Super Strong Cummins, Excellent Power,                  Great Fuel Mileage, AT, A/C, Lock Out Hubs,                  60,000 Miles</p>	<p><b>FARM TRUCKS</b>  <b>89 FORD F250 4x4 V8, 5 Sp.</b>  <b>89 FORD F250 4x4 V8, Auto</b>  <b>86 FORD 150 4x4 V8, 4 Sp.</b>                  Put Them To work</p>	<p><b>4x4 DIESEL SUPER CAB</b>  <b>94 CHEVY K2500 3/4 TON</b> You Must See, Only                  28,000 Miles, 6.5 Turbo Diesel, Auto, A/C, Tilt,                  Cruise, Tow Pkg., Captain Chairs, Drives Like A                  Dream</p>	<p><b>MECHANIC'S SPECIAL</b>  <b>4 WHEEL DRIVE 86 FORD F350</b>                  Buy It As A Dump Or Chassis, 460 5 Sp., L Pak                  Tool Box 68,900</p>	<p><b>85 FORD F350 GREAT FARM TRUCK</b>                  4 Wheel Drive Flatbed Dump, Diesel Power, 4sp.                  Trans, Dual Rear Wheel, Removable Stake Sides,</p>
<p><b>56P DIESEL 93 FORD F250</b>                  Heavy Duty 3/4 ton Diesel Power Lock Out                  hubs Real Clean Truck</p>	<p><b>4X4 CREW CABS</b>                  Single Rear Wheel Powerstroke Turbo Diesel,                  AT &amp; 5 Sp., Loaded XLT's &amp; Workstyle XL                  Call For Details</p>	<p><b>96 FORD F250 4X4</b>                  heavy Duty 3/4 Ton Power Stroke Turbo Diesel                  AF, A/C, 4:10 Gears Aluminum Wheels, Only                  12,000 Miles</p>	<p><b>CUMMINS TURBO DIESEL 89 DODGE 4</b>  <b>WHEEL DRIVE</b>                  Heavy Duty 3/4 Ton, Auto, A/C, Tow Pkg, Lock                  Out Hubs, Western Plow</p>	<p><b>FOR SALE - 12 FT STAKE BODY</b>                  With Rear Lift Gate Call For Details.</p>
<p><b>4x4 WORK TR, 95 FORD F250 XL</b>                  Heavy Duty 3/4 Ton, Powerstroke Turbo Diesel,                  5 Sp. Trans., Dual Tanks, Vinyl Seat, Vinyl Floor,                  Extra Extra Clean, Only 31,000 Miles, New Tk.                  Warranty Remaining</p>	<p><b>4X4 DIESEL SUPER CAB</b>  <b>96 FORD F250 XLT</b>                  A Nice One, Only 23,000 Miles, Auto, Loaded,                  XLT, Aluminum Wheels, 40/20/40 Seat</p>	<p><b>4x4 Aluminum Flatbed 94 Dodge 3500 -</b>                  Cummins Turbo Diesel H.D., 5 Sp., A/C, Limited Slip                  4:10 Gear, Aluminum Bed, 5th Wheel Hitch</p>	<p><b>4x4 CLUB CAB DUALY 96 DODGE</b>                  The One You're Looking For Here, Cummins                  Diesel, H.D. 5 Sp., 4:10 Gears, 37,000 Clean                  Miles</p>	<p><b>STAKE DUMP 94 CHEVY 4 WHEEL DRIVE</b>                  Handy Dandy Truck, High Output 6.5 Turbo,                  Diesel, AT, 9 Ft. Bed, Western Plow, Sell With Or                  Without Plow</p>
<p><b>Chassis Cab</b>  <b>96 4x4 F350</b>                  Powerstroke Diesel, AT, A/C,                  Sht 137 WB</p>	<p><b>5 SPD. CLUB CAB</b>  <b>95 DODGE 4 WHEEL DRIVE</b>                  Cummins Turbo Diesel, Heavy Duty 5 Spd., A/C,                  Fact. Tow Pkg., Chrome Wheels 31,400 Miles</p>	<p><b>460 SUPER CAB 92 FORD HEAVY DUTY F250</b>                  4 Wheel Drive, Strong 460 f.i. AT, A/C, Capt. Chairs,                  Gooseneck Hitch, This Truck Will Definitely Pull                  Your Trailer, 59,000 Nice Miles</p>	<p><b>5 SP. POWERSTROKE 96 FORD F250 4X4</b>                  Heavy Duty 3/4 Ton Beautiful Tk, Only 25,000                  Miles, Powerstroke Turbo Diesel, 5 Sp, A/C,                  40/20/40 Seat, Aluminum Wheels</p>	<p><b>5 SP DUALY, 94 CHEVY 4 WHEEL DRIVE</b>                  Great Pulling Tk, High Output, 6.5 Turbo Diesel,                  H.D. 5 Sp., A/C, Gooseneck &amp; Class 3 Hitch,                  Only 40,000 Miles</p>
<p><b>95 FORD SUPER DUTY</b>                  Powerstroke Diesel, 5 Sp,                  Sht 137 WB</p>	<p><b>OLD 4X4 DIESEL 86 FORD F250</b>                  Diesel Power 4 Sp. Trans, Lock Out Hubs</p>	<p><b>5 SP. DIESEL SUPER CAB, 96 FORD F250</b>                  HEAVY DUTY 5 Spd. Are Hard To Find, So                  Don't Wait Too Long, Powerstroke Turbo                  Diesel, Limited Slip Gear, Only 35,000 Miles</p>	<p><b>4X4 - 97 FORD F350 CREW CAB DUALY</b>                  Impossible To Find - But We Have One!                  Like New, Only 3,000 Miles, Powerstroke Turbo                  Diesel, AT, Every Option, Alcoa Aluminum Wheels</p>	<p><b>4X4 DIESEL SUPER CAB - \$22,900</b>  <b>94 FORD F250 HEAVY DUTY</b>                  Only 42,000 Miles, Turbo 7.3 Diesel, AT, A/C,                  Aluminum Wheels, A Real Nice Truck</p>