



**1998 ISUZU FTR**  
25,950 GVW, Will Take 24' Body  
-CALL FOR DETAILS-



**1988 IVECO 230T**  
16 ft Body, 16,900 GVW



**1990 CHEV. DUMP**  
10'6 Alum. Body, 8 2L Detroit &  
5-Speed, Under CDL



**NEW 97 & 98 ISUZU NPR**  
Cab & Chassis In Stock  
Year End Specials  
-CALL FOR DETAILS-

## READING MACK

**610-929-9433**  
**4226 Pottsville Pike**  
**Reading, PA**



## LESHER *Mack* SALES & SERVICE

27th & Cumberland St.  
Route 422 West

Lebanon, Pa  
17042



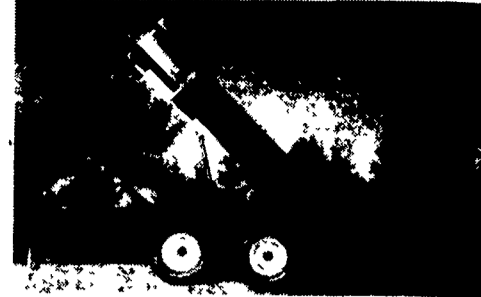
**1993 CH 613, E7-350, 1993 CH 613, E7-350,**  
RTX14709H, Air-DS402- RTX 14709H, Air-DS402-  
4:11R, Steel Disc, Hubpilot, 411R, Steel Disc, Hubpilot,  
192WB, 42 in. Flattop, 192WB, 42 in. Highrise, Tank  
500,000 miles. Plenty to Fairings, 500,000 miles.  
choose from. Plenty to choose from.



**(7) (6) 1994 CH 613 (Clean Trucks), Day Cabs, E7-300 (could be made 350) RTX 1709H, 9-Spd, 12 Ft. 38 Air Ride, Eaton Rears, 4.11 R, 151" WB, 22.5 Disc. Wheels, PS, AC.**

- COMING - 1998 MACK RD688S, E7-350, RTOF 14908LL - 10-Speed, 18 Front, 44 Rear, 4.42R, 265 inch WB

**717-273-4535**



## 6-Ton FARM DUMP TRAILERS

Direct from Manufacturer

- 10 ft. x 7 ft. • Floating Tandem Axle
- 3 ft. Front, 3 ft. Tailgate & Grain Chute
- 16 in. Extendable Sides
- 10 ga. Floor & Sides
- 11Lx15 Flotation Tires
- 2-Way 4 in. x 24 in. Hydraulic Cylinder includes hoses

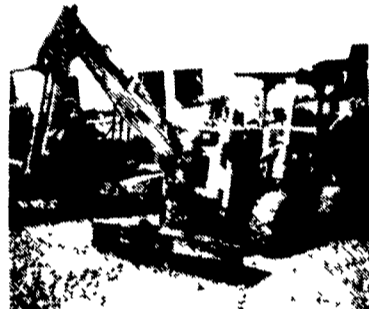
**Price \$3,200** FREE Delivery To Northeast USA  
**Phone (519) 765-4230**  
Fax 519-765-4507

## Huntingdon Equipment

Rentals Available

GOOD USED EQUIPMENT

Huntingdon Valley, PA • 215-672-9667 • 1-800-543-3833 • Eddie



**Vermeer M-470 Trencher** with backhoe  
This is one of six units we have all ready to work Starting at \$4,500.



**Flat Bed - Diesel 8 2 - 5 speed auto** with 2 speed rear GVW - 26,000



**1986 Chevy 5 Man Cab Dump, 3208 Cat - 5/2, Air Brakes. Dump with Lift Gate Dump 14' Long, GVW 34,000 pounds.**



**Material Handler Bucket Truck - 42** Bucket with Jib 1981 and 1982 Diesel Engine - Auto or Stick - Spring Special \$9,995



**Stake Body Boom Truck - 45' Height** 14,000 lbs cap 1985 GMC - Gas - 5 Speed - 2 Speed Rear



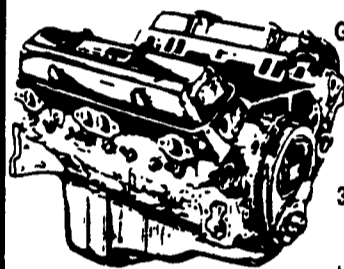
**Roll Back - 1982 International** with DT-466 Diesel - 5 Speed Auto. GVW 43,000 lbs - Former Utility Company Truck Only 13,877 Miles, 26' Bed

### DIGGER DERRICKS/AERIAL BUCKETS/UTILITY EQUIPMENT

## JONES

Goodwrench ENGINE

## HEADQUARTERS



**GM GOODWRENCH 350 V8 1973-85**  
Part Number 10067353  
New Engine - Not Rebuilt  
36 Month or 50,000 Mile Warranty

New Engine - No Core Fee **\$1,199<sup>00</sup>**

WE'LL MATCH ANY COMPETITOR'S PRICE!

**6.5L GOODWRENCH DIESELS**  
From **\$3,175**

Call 394-0711 for prices on other New or Remanufactured Goodwrench Engines. 2.5 Liter thru 454 cid. Gas and Diesel

Chevrolet - Pontiac - Olds - Buick - Cadillac - GMC

## JONES GM PARTS CENTER

1335 Manheim Pike, Lancaster, PA 17604  
Easily Located on Rt. 72 Just off of Rts. 283 & 30  
Hours: Mon-Fri 7:30 a.m. - 9 p.m. Sat 7:30-3  
(717) 394-0711



Largest Stocking & Selling Extended Cab GMC Dealer in 7 States

# JONES BEST BUY 4X4'S TRUCKS

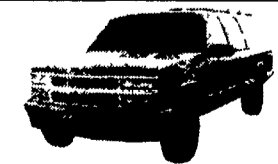
PONTIAC  
HONDA  
GMC  
TRUCK

1335 Manheim Pike, Lancaster

Prices based on straight sale, Tax & tags extra. Trades accepted at actual cash value. Must present this ad at time of purchase for sale price.

# JONES

**717-394-0711**



**'94 Dodge 15 Pass Van**  
AT, AC, V8, Clean, #7672  
220,000 Miles was \$9,975  
**SALE \$6,450**