

**All Gardens  
Great & Small**  
by  
York Co.  
Horticultural Agent  
**Tom Becker**



**HOLIDAY PLANTS  
MAKE GREAT GIFTS**  
While the poinsettia is the traditional plant of the Christmas season, other beautiful flowering plants are available. Buy a holiday plant to add to your collection or use it as a gift. Here's a few ideas.  
• New Christmas cacti varieties,

schlumbergera species, with shades of red, pink, purple, white, orange and even yellow flowers make a great gift. Look for larger flowers, prolonged flowering and more compact types this season. The Christmas cactus is easy to grow and very long lived.

• Holiday cacti prefer bright,

indirect light, temperatures of 60 to 70° F and an evenly moist soil during flowering. Exposure to cold temperatures (carefully wrap plants when transporting them outdoors in winter), moving plants from one location to another, drafts and excessive watering can cause the buds to drop from the plants before blooming.

After the plant stops blooming, keep it in a cool, sunny window. In summer, put it outside in light shade and leave it there as long as possible into the Fall. Take stem cuttings in the summer using a terminal 'leaf' pad or stem tip. Cuttings root easily for many varieties.

A basket of African violets make a charming holiday gift. Hundreds of varieties are available, in colors ranging from purple, lavender, orchid, blue, cerise, pink, wine-red, white,

two-tone, splotted, and white-edged.

Make sure the basket is lined so that pots can rest on pebbles. On a smaller scale, miniature violets, about six inches across, are a good choice for friends with limited space. Unlike the standard or large varieties, miniatures and micro-miniatures that are less than 3 inches fit into a wine glass. Include personalized directions with your gift.

African violets like average warm, bright light, (east or south window in winter) or artificial light using 2-40 watt fluorescent tubes about 12 inches from plants. Provide 14 hours of light each day.

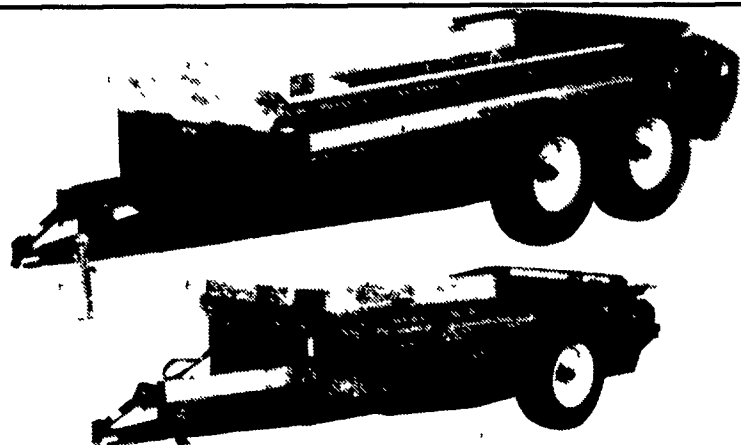
Buying a poinsettia for a gift? Whether your preference is red, white, pink, peach, yellow, marbled or speckled, look for plants with fully mature, thoroughly colored and expanded bracts. Avoid plants tinged with too much green around the bract edges, which would indicate that plants are not at peak bloom.

Check to make sure that the secondary smaller bracts which surround the cyathia (the true flower, in yellow berry-like structure) are fully colored. Look for plants with lush green foliage that are undamaged and unmarred, dense and plentiful, all the way down to the soil level.

Also, look for plants that are balanced, full and attractive from all angles. The height of the plant from the rim of the pot to the top of the plant should be 1-1/2 to 2 times the height of the pot. Lastly, look for plants with strong, stiff stems; good leaf and bract retention, with no signs of wilting, breaking or dropping. These are all signs of a durable plant that gives the longest possible period of enjoyment in your home.

Questions relating to this article can be sent to: Tom Becker, Extension Agent, Horticulture at 112 Pleasant Acres Road, York, PA 17402-9041 or phone (717) 840-7408.

# H&S "HEAVY DUTY" MANURE SPREADERS



*Smooth — Even — Positive Spreading*

Model No.	125	235	270	310	370	430
Capacity—Old Rating	125 Bu	235 Bu.	270 Bu.	310 Bu	370 Bu	430 Bu.
Capacity Cu. Ft. Struck Level	75	143	167	185	235	275

Model No.	175	222	262
Capacity—Old Rating	175 Bu.	222 Bu.	262 Bu.
Capacity Cu. Ft. Struck Level	105	129	152

**NO LEASE PAYMENTS - NO INTEREST**  
**Till January 1, 1999**  
**On All H & S Equipment**  
**Low Interest Financing Available**  
**See Your Local Dealer For Details**

**ADDISON FARM & INDUSTRIAL**  
Addison, PA

**BARTOSEK AGRI S&S**  
West Springfield, PA

**JOHN BROWN EQUIP.**  
Perryopolis, PA

**W.C. CRYTZER**  
Kittanning, PA

**D&E EQUIPMENT**  
Bloomsburg, PA

**DOTTERER EQUIP.**  
Milli Hall, PA

**ECKROTH BROTHERS**  
New Ringgold, PA

**ECKROTH BROTHERS**  
Orefield, PA

**FINCH IMPLEMENT**  
Hanover, PA

**FLINNER EQUIPMENT**  
Prospect, PA

**G&D FARM EQUIP.**  
Manheim, PA

**GALLUP & TENHAKEN**  
Edinboro, PA

**HARTS FARM EQUIP.**  
Cochran, PA

**HESS FARM EQUIP.**  
Canton, PA

**HETRICK FARM SUPPLY**  
New Bethlehem, PA

**HOOVER EQUIPMENT**  
Tyronne, PA

**MCDOWELL FARM & IMP.**  
Grove City, PA

**MCGARVEY EQUIPMENT**  
Reynoldsville, PA

**NEW ALEXANDRIA FARM SUPPLY**  
New Alexandria, PA

**NORTHEAST DISTRIBUTORS & EQUIP.**  
W Clifford PA

**NORMAN D. CLARK**  
Honey Grove, PA

**SCHEFFEL EQUIPMENT**  
Somerset, PA

**SMITH IMP. INC.**  
Mercersburg, PA

**SWEGER LIME & EQPT.**  
Avella, PA

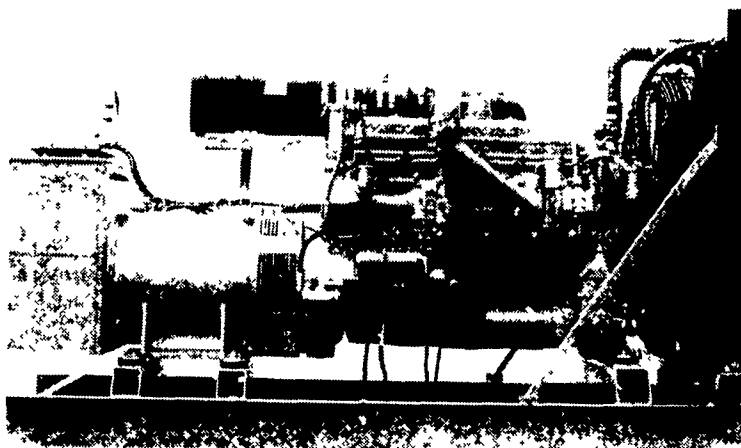
**TOBIAS EQUIPMENT**  
Halifax, PA

**TRIPLE H TRACTOR**  
Peach Bottom, PA

**WATSON INC.**  
Sharon, PA

**ROBERT WILKINS**  
Saxton, PA

## GENERATORS



**MARTIN ELECTRIC PLANTS • Manufacturer of:**  
**DIESEL, LP GAS, NATURAL GAS, PTO**  
**Automatic & Manual Start Systems**  
**USED UNITS ALSO AVAILABLE**

*Call Us For All Your Generator Needs!*

## MARTIN ELECTRIC PLANTS

280 Pleasant Valley Rd., Ephrata, PA 17522-8620  
**800-713-7968**

**Tel: 717-733-7968 Fax: 717-733-1981**



**Water Quality**  
**an IMPORTANT**  
**Ingredient In**  
**Livestock Management**

It's a fact! Contaminated water can have a costly effect on your livestock and poultry performance. Our years of experience plus hundreds of farm related treatment systems has proven the validity and practicality of correcting contaminated water.

**Martin**  
**WATER CONDITIONING**  
*Your Water Treatment Center*

**Call us today for treatment of:**  
**\* Nitrates \* Bacteria \* Iron \* Sulfates**  
**\* pH - Acidity/Alkalinity**

740 E Lincoln Ave  
Myerstown, PA 17067  
Ph: (717) 866-7555  
800-887-7555

548 New Holland Ave  
Lancaster, PA 17602  
Ph: (717) 393-3612  
800-224-3612

308 W Penn Ave  
Cleona, PA 17042  
Ph. (717) 273-7555

RD #3 Box 109G  
Stoystown, PA 15563  
Ph. (814) 893-5081  
800-893-5081

309 W 4th St  
Quarryville, PA 17566  
Ph. (717) 786-7373

For More Information, Contact Your Local Dealer Or

**H&S Manufacturing, Co.**

Ripley, NY (716) 736-7595