

North Atlantic Shell Eggs
December 11, 1997
Atlanta, Ga.

DELIVERED STORE DOOR, CENTS PER DOZEN, EXTRA LARGE .92-.97; LARGE .90-.95; MEDIUM .65-.71.

PRICES TO RETAILERS IN BOSTON WERE UNCHANGED TO THREE CENTS LOWER FOR MEDIUMS AND BALANCE OF PRICES WAS UNCHANGED. THE MARKET TONE WAS GENERALLY STEADY. DEMAND HAD IMPROVED IN BOTH RETAIL AND FOOD SERVICE OUTLETS AS HOLIDAY SHOPPING HAD BEGUN IN MOST AREAS. SUPPLIES OF BOTH BROWN AND WHITE EGGS WERE GENERALLY ADEQUATE WITH LARGER SIZES OCCASIONALLY SHORT AND SMALLER SIZES USUALLY AVAILABLE. BREAKING STOCK SUPPLIES WERE ADEQUATE TO AMPLE FOR THE LIGHT DEMAND. OFFERINGS OF SPENT HENS WERE SUFFICIENT FOR PROCESSING PLANTS TO RUN FULL SLAUGHTER SCHEDULES.

PHILADELPHIA: PRICES TO RETAILERS, SALES TO VOLUME BUYERS, USDA GRADE A AND GRADE A. WHITE EGGS IN CARTONS,

Delmarva Broiler
ATLANTA, GA
ECEMBER 10, 1997

DELMARVA BROILER/FRYER MARKET. FEDERAL-STATE Movement of ready-to-cook whole birds was light and unaggressive. Offerings were readily available and difficult to clear. Live supplies were mostly moderate; weights varied in a full range of light to heavy. Processing schedules were reduced a bit and were moderate in total. Less than trucklot asking prices were 1 cent lower at 45 to 59 cents. Trade sentiment remained weak and unsettled. In the parts complex, all items were in a range of adequate to ample with limited buying interest noted.

ESTIMATED SLAUGHTER OF BROILER/FRYERS IN DELMARVA (000)

ESTIMATED ACTUAL AVG. WEIGHT ACTUAL AVG. WEIGHT
12/10 12/08 12/08 12/03 12/01
2,259 2,402 5.02 2,405 4.98

*BROILER/FRYER CURRENT

NEGOTIATED PRICES FOR IMMEDIATE DELIVERY INCLUDES MOSTLY MULTIPLE-DROP SHIPMENTS OF BRANDED AND WING TAGGED TO NEW YORK CITY FROM DELMARVA BRANDED U.S. GRADE A RANGE 43-66 WEIGHTED AVERAGE 47.48 NO. OF BOXES 10,968 *8 of 9 plants reporting.

National Egg Market
ATLANTA, GA
DECEMBER 10, 1997

NATIONAL EGG MARKET - AT A GLANCE:

Prices were unchanged to lower for mediums in New England and the Midwest, and other prices were unchanged. The market tone was steady to weak with mediums remaining in the weakest position. Demand was light to good, mostly moderate. Supplies were adequate to ample with mediums the most surplus. Breaking stock supplies were at least adequate for the light demand. Light type hen supplies were sufficient.

Leinbach's Hay

Shippensburg, PA
Dec. 6 and 9

Report Supplied by Auction
108 LOADS.
ALFALFA: 175.00-194.00.
MIXED HAY: 90.00-187.00.
TIMOTHY: 100.00-144.00.
CLOVER: 100.00-135.00.
BROMEGRASS: 94.00-210.00.
ORCHARDGRASS: 80.00-150.00.
STRAW: 120.00-147.00.
EAR CORN: 102.50-135.00.
CORN FODDER: 44.00-76.00.
FIREWOOD: 27.00-57.50 LOAD.

Belleville Hay

Wednesday, Dec. 10
Belleville, PA

Report Supplied by Auction
ALFALFA: 160.00.
MIXED HAY: 102.00-155.00.
NO SALE DEC. 24.

Frederick Co. Hay

Frederick, Md. Livestock Auction
Wed., Dec. 10

4 LOADS.
TIMOTHY: 3.40-3.50 BALE.
ORCHARD AND TIMOTHY: 29.00
ROUND BALES.
GRASS ROUND BALES: 31.00.

Morrison's Cove Auction Hay

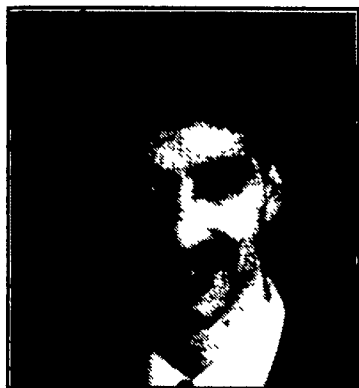
Morrison's Cove
Dec. 9

Report Supplied by Auction
ALFALFA HAY: 235.00.
MIXED HAY: 225.00-255.00.
TIMOTHY HAY: 150.00-170.00.
STRAW: 107.00.
ROUND BALES 29.00 EACH.
FIREWOOD: 39.00 PICK-UP LOAD.
HAY SALE EVERY TUES., 1 P.M.



PENNFIELD DAIRY DAYS
MARK YOUR CALENDAR!

Featured Speakers



Normand St. Pierre, Ph.D., PAS

JANUARY 1998						
SUN	MON	TUE	WED	THUR	FRI	SAT
18	19 CORTLAND, NY Holiday Inn	20 MOUNT JOY, PA Country Table	21 MARTINSBURG, PA Morrison Comm. College	22 NEW HOLLAND, PA Yoder's Restaurant	23 WILLINGTON, MD Howard Johnson	24
25	26	27	28	29	30	31
FEBRUARY 1998						
SUN	MON	TUE	WED	THUR	FRI	SAT
1	2	3	4	5	6	7
8	9 LEBANON, PA Lebanon Valley Expo	10 TUNKHANNOCK, PA Shagbark	11 MERCY, PA Camelot	12 HERD-IN-HAND, PA Plain & Paebey	13 MARYLAND Lo Weiders	14

"More Income On The Farm"

- 9:30 A.M. • Milk, Coffee & Donuts
Visit Displays
Talk with speakers
- 10:15 A.M. • Meeting Begins Promptly
PENNFIELD - GROWING TO MEET THE DAIRYMAN'S NEEDS
Speaker: Don Mahlandt
- **\$100 MORE PROFIT PER COW PER YEAR**
Speaker: Dr. Mike Lormore, DVM
- **"BEST VALUE" HEIFER AND DRY COW FEEDING PROGRAMS**
Speaker: Dr. Tim Snyder, Ph.D.
- **ASSETS ALLOCATED FOR HEIFERS**
Speaker: Dr. Normand St.-Pierre, Ph.D.
- Buffet Lunch
- **PROFITABLE FEEDING - HIGH PRODUCING COWS**
Speaker: Dr. Tim Snyder, Ph.D.
- **KEEPING THE DAIRY FARM PROFITABLE**
Speaker: Dr. Normand St.-Pierre, Ph.D.
- 2:15 P.M. • Adjourn



Timothy Snyder, Ph.D., PAS
Mgr., Dairy Nutrition,
Pennfield Corp.

Ladies Welcome: The information presented at these meetings will be directed towards the **FAMILY DAIRY FARM** and its future. Since many wives play a key role in the Family Farm Operation, we would strongly urge both husband and wife to attend as the information presented will be for the "Management Team".



TO MAKE RESERVATIONS CALL 1-800-732-0467

pennfield feeds

Transportation Available