



HOG MARKETS

New Holland Feeder Pigs

New Holland, PA
Wed., December 10, 1997
Report Supplied by USDA
TODAY 886 HEAD
LAST WEDNESDAY 573
LAST YEAR 1029
TREND: FEEDER PIG TREND NOT ESTABLISHED BECAUSE SUPPLY SOLD MAINLY FOR SLAUGHTER. ALL PIGS WEIGHED ON ARRIVAL AND SOLD BY THE HUNDREDWEIGHT.
US#1-2: 41 HEAD 36-46 LBS. 80.00-85.00, WEIGHTED AVERAGE 42.32, WEIGHTED PRICE \$2.13.
SLAUGHTER: 41 HEAD 18-23 LBS. 160.00-195.00, WEIGHTED AVERAGE 21.47, WEIGHTED PRICE 182.54; 218 HEAD 21-29 LBS. 110.00-150.00, WEIGHTED AVERAGE 26.79, WEIGHTED PRICE 128.87; 37 HEAD 33-38 LBS. 106.00-135.00, WEIGHTED AVERAGE 34.59, WEIGHTED PRICE 125.65; 133 HEAD 31-39 LBS. 74.00-95.00, WEIGHTED AVERAGE 35.90, WEIGHTED PRICE \$2.68; 163 HEAD 41-49 LBS. 74.00-82.00, WEIGHTED AVERAGE 42.82, WEIGHTED PRICE 77.37; 80 HEAD 53-59 LBS. 76.00-86.00, WEIGHTED AVERAGE 54.50, WEIGHTED PRICE 79.99; 28 HEAD 60 LBS. 76.00; 20 HEAD 70-72 LBS. 68.00-75.00, WEIGHTED AVERAGE 71.25, WEIGHTED PRICE 71.33.
AS IS: 37 HEAD 32-52 LBS. 70.00-86.00, WEIGHTED AVERAGE 41.89, WEIGHTED PRICE 76.73.
ALL FEEDER PIGS CONSIGNED TO WED. FEEDER PIGS ARE MUST ORIGINATE FROM A QUALIFIED NEGATIVE OR MONITORED HERD.

New Holland Hogs

NEW HOLLAND, PA
MON DECEMBER 8, 1997
USDA Market News
NEW HOLLAND HOG AUCTION
HOG RECEIPTS TODAY 1571 LAST MONDAY 969 LAST YEAR 1289
BARROWS AND GILTS: Compared to last Monday barrows and gilts 50-1.00 lower, instances 1.50 lower.
US 1-2 220-260 lbs 45.50-46.25
US 1 Few 220-255 lbs 46.50-48.00
US 1-3 230-270 lbs 43.50-45.00
US 2-3 Few 260-300 lbs 41.75-43.50

New Wilmington Graded Feeder Pig Sale

New Wilmington, PA
Dec. 5, 1997
FEEDER PIGS 487. 57.0 LBS. PER PIG; 34.09 PER HEAD: 59.87 PER HUNDRED WEIGHT. ALL PRICES PER HUNDRED WEIGHT.
US#1-2: 30-40 LBS. 70.00-77.50; 40-50 LBS. 65.00-70.00, ONE LOT 77.50; 50-60 LBS. 60.00-67.50; 60-70 LBS. 50.00-62.50; 80-105 LBS. 50.00.
US#2: 30-40 LBS. 67.50-72.50, LOT 60.00; 40-50 LBS. 60.00-70.00, FEW TO 77.50; 50-60 LBS. 57.50-67.50; 60-70 LBS. 2 LOTS 52.50 AND 55.00; 70-80 LBS. 47.50-52.50; 80-105 LBS. ONE LOT 50.00.
US#2-3: 30-40 LBS. ONE LOT 57.50; 40-50 LBS. ONE LOT 62.50; 60-70 LBS. FEW 55.00.

Lancaster Hogs

Lancaster Stockyards
Wednesday, Dec. 10, 1997
Report supplied by USDA
HOG MARKET TODAY 1165 HEAD; LAST WEDNESDAY 911; LAST YEAR 1108.
BARROWS AND GILTS: 1.00-2.00 LOWER.
US#1-2 220-260 LBS. 44.50-45.50.
US#1-3 220-260 LBS. 43.50-44.50, 270-285 LBS. 40.00.
SOWS: 2.00 LOWER. US#1-3 380-450 LBS. 28.00-30.00; 500-600 LBS. 33.00-34.00.
BOARS: ALL WEIGHTS 27.00.

Hatfield Direct

Hatfield, Pa.
Reports Supplied by Packer
For Monday, December 8, 1997
And Wednesday, December 10, 1997
MONDAY

TODAY: 7115
LAST MONDAY: NO KILL. COMPARED TO LAST MONDAY ---
55.4% 215-275 LBS. BASE 46.08.
56.4% 215-275 LBS. 47.11.
57.4% 215-275 LBS. 48.14.
58.4% 215-275 LBS. 49.17.
59.4% 215-275 LBS. 50.20.
PREMIUM VALUE: 1.39.
GOOD'S RECEIVING
MONDAY CASH 45.00.
WEDNESDAY
TODAY: 7083
LAST WEEK: 7524
TREND: COMPARED TO LAST WEDNESDAY: .25 LOWER.

55.4% 215-275 LBS.: BASE: 44.92.
56.4% 215-275 LBS.: 45.91.
57.4% 215-275 LBS.: 46.90.
58.4% 215-275 LBS. 47.89.
59.4% 215-275 LBS. 48.88.
PREMIUM VALUE 1.33.

Indiana Hogs

Springfield, IL
Thursday December 11, 1997
USDA-IL Market News Service
Indiana-Ohio Direct Hog Opening
Barrows and Gilts: Mostly .50 Lower.
Demand light to moderate on a moderate movement. US 1-2 230-260 lbs. 41.00-42.50 Few 43.00 US 2-3 230-260 lbs. 37.00-41.00 210-230 lbs. 33.00-37.00
Sows: Steady to Weak.
US 1-3 300-400 lbs. 30.00-32.00 Few 29.00 400-500lbs. 32.00-34.00 500-600 lbs. 34.00-36.00 Few over 600 lbs. 37.00
Boars: 29.00-31.00 Few 28.50

Kutztown Hay Auction

Fleetwood, PA
Dec. 6
Hay and Straw at 9:00 a.m. Sat. followed by produce
Report Supplied by Auction
GRASS HAY: 137.50-150.00.
MIXED HAY: 125.00-210.00.
TIMOTHY HAY: 125.00-140.00.
HAY: 1.15-3.90 BALE.
WHEAT STRAW: 107.50-120.00, 2.00 BALE.
OAT STRAW: 100.00-102.50.
FIREWOOD: 57.50-62.50.



HAY & GRAIN MARKETS

Diffenbach Auction Center

New Holland, Pa.
Monday, December 8, 1997
Report Supplied by Auction
TOTAL LOADS: 167.
ALFALFA: 90.00-265.00.
MIXED HAY: 117.00-250.00.
TIMOTHY: 145.00-220.00.
MEADOWGRASS: 150.00.
ORCHARDGRASS: 127.00-180.00.
STRAW: 100.00-147.00.
EAR CORN: 95.00-112.00.
FIREWOOD: 47.00-107.00.

Westminster Hay

Westminster, Md.
Tuesday, December 9, 1997
Report Supplied by Auction
107 LOTS.
ALFALFA: 97.00-165.00, 3.40-5.00 BALE.
TIMOTHY: 3.00-4.10 BALE, 39.00 LARGE ROUND.
MIXED HAY: 2.00-4.00 BALE.
GRASS: 2.10-3.75 BALE, 23.00-26.00 LARGE ROUND.
STRAW: .65-2.30 BALE.
SOYBEAN STUBBLE: 1.60-1.70 BALE, 16.00 LARGE ROUND.
CORN STUBBLE: 1.00-1.20 BALE.
EAR CORN: 70.00.
FIREWOOD: 45.00-87.50 CORD.

Good's Hay

Leola, Pa.
Wed., December 10, 1997
Report Supplied by Auction
TOTAL LOADS: 51.
STRAW: 125.00-187.00.
CORN: OLD 122.00, NEW 105.00.
GRASS: 127.00-152.00.
TIMOTHY: 157.00-203.00.
ALFALFA: 157.00-212.00.
MIXED HAY: 130.00-205.00.
MULCH HAY: 59.00.

Middleburg Grain & Hay Auction

Middleburg, Pa.
Tuesday Dec. 9, 1997
Report Supplied by PDA
42 LOADS OF HAY, 77 LOADS TOTAL.
MIXED HAY: 97.50-192.50.
ALFALFA: 125.00-202.50.
TIMOTHY: 80.00-130.00.
ORCHARDGRASS: 85.00-122.50.
STRAW: 65.00-132.50.
EAR CORN: NEW 85.00-88.00, OLD 97.50-110.00.
OATS: 2.30-2.55 BU.
FIREWOOD: 29.00-95.00 LOAD.

Regional Hay

December 8, 1997
Eastern Pa.
HAY & STRAW MARKET FOR EASTERN PA - (ALL HAY NO. 2 AND BETTER. PRICES PAID BY DEALERS AT THE FARM & PER TON.) HAY AND STRAW STEADY TO 10.00 HIGHER.
ALFALFA 110.00-170.00; MIXED HAY 100.00-160.00, FEW 160.00; TIMOTHY 100.00-160.00, FEW 160.00; STRAW 80.00-100.00, FEW 130.00; MULCH 40.00-50.00, FEW 30.00.

SUMMARY OF LANCASTER CO. HAY AUCTIONS FOR WEEK ENDING 12/05/97. PRICES PER TON: LOADS: 193 HAY, 51 STRAW & 12 EAR CORN. ALFALFA 137.00-205.00; MIXED HAY 127.00-205.00; TIMOTHY 147.00-202.00; STRAW 110.00-145.00; EAR CORN 106.00-133.00.

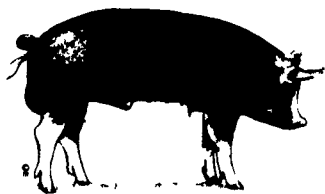
SUMMARY OF CENTRAL PA HAY AUCTIONS FOR WEEK ENDING 12/05/97. PRICES PER TON: LOADS: 113 HAY, 22 STRAW & 22 EAR CORN. ALFALFA 142.00-207.50; MIXED HAY 105.00-175.00; TIMOTHY 107.50-161.00; STRAW 87.50-124.00; EAR CORN 87.00-125.00.

The Windmill

Penn Yan, N.Y.
Dec. 5, 1997
Report Supplied by Auction
22 LOADS.
TIMOTHY: 1ST CUTTING 88.00-90.00.
MIXED GRASS: 1ST CUTTING 80.00-120.00, 2.00 BALE.
MIXED GRASS: 2ND CUTTING 86.00-185.00.
TIMOTHY ALFALFA: 1ST CUTTING 84.00-165.00, 2ND CUTTING 147.00-178.00, 3.30 BALE.
STRAW: 94.00-109.00.
LARGE ROUND BALES OF HAY 15.00-21.00 EACH.
HAY SALES EVERY MON. AND FRI., 11 A.M. SHARP.

Green Dragon Hay

Ephrata, Pa.
Friday, December 5, 1997
Report Supplied by Auction
85 TOTAL LOADS.
MIXED HAY: 31 LOTS, 132.00-265.00.
ALFALFA: 5 LOTS, 130.00-215.00.
TIMOTHY: 21 LOTS, 142.00-202.00.
STRAW: 16 LOTS, 110.00-160.00.
EAR CORN: 4 LOTS, 107.00-133.00.
ORCHARD GRASS: 5 LOTS, 145.00-180.00.
OATS: 2.90 BU.
FIREWOOD: 50.00 LOAD.



CHRISTMAS
Lamb/Goat
Sale
Tues Dec. 16
@ 7 PM
Rec 9am to 5pm
Carlisle
LIVESTOCK MARKET, INC.
Exit 12 Off I-81 turn South
(717) 249-4511 or
Evenings Jim, 249-2359

CARLISLE LIVESTOCK MARKET, INC.
FED and FEEDER CATTLE SALE
TUES., DEC. 16, 1997 7:00 PM
Early Bird Pens Close 2 PM Turn South Off I-81 @ Exit 12
Evenings Jim (717) 249-2359 Market (717) 249-4511

HERE TODAY • HERE TO STAY
For Buying or Selling Livestock
Call Dunlaps at (717) 397-5136

Slaughter Cattle
Every Monday 9:30 AM
Feeder Cattle
Sold in Conjunction with Monday Receipts

Receiving Market Hogs
Wednesday
6:30 AM To 11:30 AM
No Wednesday Hog Receiving Station
Dec. 24 & 31
Sold By Appointment Only

Sheep & Goat
Consignments Welcome for Mondays

Graded Sow & Boar Sales
Dec. 16
Jan. 6 & 20
(1st & 3rd Tues. of month)
Receiving 8:00 AM to Noon
SALE - 2:00 PM (Large Lots)
2:30 PM - (Individuals)

Sows to be graded & weighed in 50 lb increments
PROBLEM SOWS
SOLD SEPARATELY

Walter M. Dunlap and Sons
LANCASTER STOCKYARDS
An Old Line Commission Firm Dedicated to Livestock Marketing for the 21st Century!

PENNFIELD GRAIN BANK

Pennfield Offers A Sound Program For The Dairy Farmer To Use His Grain "Same As Cash" To Reduce His Monthly Feed Bill And To Avoid Having To Take "Harvest Price" For His Grain

Prices Week Of 12/15/97
Corn \$3.20 Bu.
Soybeans \$7.23 Bu.
Barley \$2.57 Bu.

- Prices Updated Weekly
- Grain Bank Balance Shown On Each Invoice
- No Hidden Charges

Call 1-800-732-0167
pennfield feeds

Lancaster Farming

INDEX
Four Sections

COLUMNS
Now is the Time..... A10
Being a Farm Wife..... B 3
Family Living Focus..... B 4
All Gardens..... B11
Ida's Notebook..... B16
Consuming Thoughts..... B17
Business News..... C10
Classified Ads..... C17, D 7

DEPARTMENTS
Editorial..... A10
Farm Calendar..... A10
Farm Forum..... A10
Futures..... A16
Mailbox Markets..... B21
Sale Reports..... B28
Public Auction Register..... B29

DAIRY
DHIA Focus..... A32
Holstein News..... A40
Lancaster DHIA Cows..... C12

FEATURES
Lebanon Farm/City..... A22
Berks DHIA Banquet..... A36
Mifflin Farm/City..... A37
Adams 4-H..... A38
Conservationists Honored.... A41
Green Dragon Tales..... B 5
Christmas Magic..... B20
Sky Meadows..... C 6
MD Cooperators Honored.... C16
Chester Honors Dairy..... C17

HOME AND YOUTH
Home On The Range..... B 2
Homestead Notes..... B 5
Cook's Question Corner..... B 8
Kids Korner..... B10
4-H Happenings..... B12
You Ask, You Answer..... B18
Farm Women Society..... B16