

Aberdeen Sales Company, Inc.

Complete Auction & Appraisal Service
Churchville, Md.

Report Supplied by Auction
Wednesday, December 10, 1997

SLAUGHTER STEERS: STEADY MARKET. CHOICE 2-4 1100-1400 LBS. 68.00-70.00; SELECT & LOW CHOICE 1000-1500 LBS. 60.00-65.00; HOLSTEIN HI CHOICE & PRIME 1250-1400 LBS. 58.00-62.00; CHOICE 1200-1500 LBS. 56.00-58.00; SELECT, ALL WEIGHTS 47.00-53.00.

SLAUGHTER HEIFERS: STEADY MARKET. CHOICE & PRIME 950-1300 LBS. 65.00-68.00; SELECT ALL WEIGHTS 900-1400 LBS. 54.00-61.00.

COWS: MARKET 1.00 HIGHER. BRK. UT. & COMM. 2-4 BULK 34.00-38.00; HI DRESSING 38.00-43.00; CUTTER & BON. UT. 32.00-36.00; HI DRESSING 36.00-40.00; CANNER & CUTTERS 28.00-31.00; LOW DRESSING 22.00-28.00; CRIPPLED, SLOW & SICK .05-.20.

BULLS: MARKET 2.00 HIGHER. ALL WEIGHTS 1100-1900 LBS. 39.00-47.00.

VEAL CALVES: MARKET STEADY. CHOICE AND PRIME 200-400 LBS. 63.00-77.00; HI GOOD AND LOW CHOICE ALL WEIGHTS 46.00-53.00.

FARM CALVES: MARKET 20.00 HIGHER. HOL BULLS 100-125 LBS. 95.00-115.00; HOL. BULLS 85-95 LBS. 47.00-89.00. HOL. HEIFER CALVES 100-120 LBS. 90.00-112.00; SMALL FRAME 70-105 LBS. 30.00-62.00;

SLAUGHTER CALVES ALL WEIGHTS 15.00-35.00.

FEEDER CATTLE: MARKET STEADY. BULLS & STEERS 400-900 LBS. 59.00-76.00; HEIFERS 300-700 LBS. 43.00-65.00.

LAMBS: MARKET 7.00 HIGHER. CHOICE & PRIME 90-110 LBS. 90.00-108.00; LIGHTER LAMBS 97.00-122.00; HEAVY EWES 25.00-34.00, LIGHT 35.00-50.00.

GOATS: STRONG. SMALL 25.00-35.00; MEDIUM 40.00-60.00; LARGE 100.00-150.00.

HOGS: MARKET 1.00 LOWER. 210-250 LBS. 41.00-45.00; 255-300 LBS. 38.00-44.00. HEAVY SOWS 33.00-39.00, LIGHT 28.00-33.00. BOARS ALL WEIGHTS 25.00-31.00.

Morrison Cove Livestock

Martinsburg, Pa.
December 8, 1997

Report supplied by auction

CATTLE 204. STEERS CHOICE 65.00-69.00; GOOD 60.00-62.00.

HEIFERS: CHOICE 63.00-67.00; GOOD 55.00-61.00.

COWS: UTILITY & COMMERCIAL 33.00-39.00; CANNER & LOW CUTTER 18.00-32.00.

BULLOCKS: NO MARKET TEST. BULLS: YIELD GRADE NO. 1 31.50-45.00.

FEEDER CATTLE: STEERS

45.00-60.50; BULLS 35.00-55.00; HEIFERS 30.00-55.00.

CALVES 153. PRIME, NO MKT. TEST; CHOICE, NO MKT. TEST; GOOD 40.00-60.00; STANDARD 15.00-25.00; HOLSTEIN BULLS 90-130 LBS. 50.00-80.00; HOLSTEIN HEIFERS 90-130 LBS. 90.00-105.00.

HOGS: 296. US NO. 1-2 44.00-44.50; US NO. 1-3 42.00-43.50.

SOWS: US NO. 1-3 30.00-38.00. BOARS: 30.00-38.00.

FEEDER PIGS: 16 HEAD. US#1&3 20-50 LBS. 22.00-35.00.

SHEEP: 28 HEAD. CHOICE LAMBS 85.00-95.00; GOOD LAMBS 80.00-85.00; SLAUGHTER EWES 28.00-35.00.

GOATS: 35.00-75.00.

New Holland Dairy

New Holland Sales Stables
Wednesday, December 10, 1997

Report supplied by auction

111 DAIRY COWS, 149 HEIFERS, 9 BULLS. MARKET STRONGER.

LOCAL FRESH COWS 460.00-1125.00.

LOCAL SPRINGERS 785.00-1175.00. FRESH HEIFERS 500.00-1300.00.

UPSTATE LOADS FRESH 950.00-1210.00.

BETTER FRESH COWS 1235.00-1360.00.

LOAD CANADIAN FRESH 900.00-1360.00.

SPRINGING HEIFERS LARGE 975.00-1125.00, SMALL 235.00-910.00. SHORTBRED HEIFERS 325.00-935.00.

REGISTERED HEIFERS OPEN 660.00-910.00.

OPEN BREEDING AGE HEIFERS 510.00-585.00.

SMALL OPEN HEIFERS 210.00-490.00.

BULLS 425.00-525.00, PUREBREDS 410.00-575.00.

HERD OF 32 HEAD ALL STAGES 310.00-975.00.

Greencastle Livestock

Greencastle, Pa.
Dec. 11, 1997

CATTLE 166...PDA...COWS STEADY TO 2.00 LOWER. STEERS; SELECT ONE AT 53.00, FEW STANDARD 45.25-49.50. HOLSTEIN STEERS: FEW STANDARD 42.00-43.00. HEIFERS: SELECT ONE AT 49.25, FEW 40.00-41.00.

COWS: BREAKING UTILITY & COMMERCIAL 33.00-35.75, CUTTER & BONING UTILITY 29.25-33.75; CANNER & LOW CUTTER 26.00-30.25, FEW DOWN TO 23.00, SHELLS DOWN TO 12.50. BULLOCKS ONE SELECT 47.25. BULLS: YIELD GRADE NO. 1 FEW 1730-1780 LBS. 40.00-43.75, YIELD GRADE NO. 2 FEW 1200-1655 LBS. 30.00-39.75.

FEEDER CATTLE: STEERS: ONE LOT M 480 LBS. AT 79.50. HEIFERS: FEW L, 500-650 LBS. 54.00-65.00, FEW L2 415-720 LBS. 47.00-50.00. CALVES: 248, STANDARD & GOOD 75-115 LB. 23.00-30.00, UTILITY 50-100 LB. 12.00-21.00 FEW 25.00.

FARM CALVES: HOLSTEIN BULLS 5.00-10.00, 15.00 HIGHER. NO. 1 90-120 LB. 70.00-92.50, FEW LATE SALES 95.00-106.00, NO. 2 85-120 LB. 40.00-60.00, FEW TO 70.00. HOLSTEIN HEIFERS: NO. 1 80-120 LB. 60.00-120.00, NO. 2 75-110 LB. 30.00-52.50. BEEF CROSS BULLS & HEIFERS 110-120 LB. 50.00-57.50.

HOGS: 7 SOWS: FEW 1-3 445-545 LB. 34.00-36.50, BOARS ONE 485 LB. AT 28.00.

FEEDER PIGS: 23 NO MARKET TEST.

SHEEP: 0. NO MARKET TEST.

GOATS: 1. MEDIUM ONE AT 60.00.



Friend's Stockyard Inc.

Accident, Md. 21520

Report Supplied by Auction
December 8, 1997

STOCK BULLS AND STEERS (200-500 LBS.) 57.00-71.00.

STOCK HEIFERS: 36.00-63.00.

SLAUGHTER STEERS: GOOD TO CHOICE 62.00-68.85; MEDIUM TO GOOD 58.00-61.75, HEAVY CHOICE OVER 1450 LB. 55.00-63.40.

HOLSTEIN STEERS: HEAVY CHOICE 37.00-51.50, LIGHT 38.00-45.00.

SLAUGHTER HEIFERS: GOOD TO CHOICE 62.50-67.75; MEDIUM TO GOOD 47.00-62.00.

BULLS: HEAVY 35.00-43.50, LIGHT 38.00-40.00.

COWS: UTILITY (HOLSTEIN) 31.00-40.00, COMMERCIAL TO GOOD 27.00-31.50, CULL COWS 27.00 AND DOWN.

VEALS: GOOD TO CHOICE 50.00-65.00, MEDIUM TO GOOD 20.00-45.00.

BOB CALVES: 20.00 AND DOWN.

HOLSTEIN BULL CALVES — RETURN TO FARM (90 TO 120 LB.)-UP TO 92.00.

HOLSTEIN HEIFER CALVES — RETURN TO FARM (90 TO 120 LB.) - UP TO 100.00.

BEEF CROSS CALVES — RETURN TO FARM UP TO 60.00.

HOGS: TOP QUALITY UP TO 47.00, HEAVY UP TO 45.00, LIGHT 30.00-43.00.

SOWS: 35.00-38.00.

MALE HOGS: 25.00-30.00.

LAMBS, LIGHT AND FEEDER, NONE AVAILABLE.

SHEEP: 15.00-38.00.

LIVESTOCK PRICES ARE ALL GIVEN PER HUNDRED WEIGHT!

Frederick Livestock Auction

Frederick, Md.

December 8, 1997

Report Supplied by Auction

SLAUGHTER COWS: 106 HEAD, 1.00 LOWER. UTILITY 33.00-38.00; HIGH DRESSING TO 39.75; CANNERS 29.00-33.00; SHELLY 28.00 DOWN.

BULLS: 7 HEAD. YG#1 1600 LBS. 44.75; YG#2 1200-1600 LBS. 36.50-40.00.

FED STEERS: FEW SELECT BEEF BREEDS 53.00-57.50; HOLSTEIN LOW CHOICE 1700-1800 LBS. 53.00-55.00; 1 1820 LB. AT 49.50.

FED HEIFERS: LOW CHOICE HOLSTEINS 1200-1550 LBS. 44.00-48.00; STANDARD 35.00-42.00.

VEAL CALVES: 265 HEAD. LOW CHOICE 175-300 LBS. TO 60.00; 1 350 LB. AT 51.00; FEW 135-170 LBS. 40.00-50.00; CULLS 85-110 LBS. 24.00-29.00; 60-80 LBS. 20.00-27.00; WEAK/ROUGH 20.00 DOWN.

FARM CALVES: HOLSTEIN BULLS #1 95-120 LBS. 75.00-97.00; 90-95 LBS. 40.00-75.00; 80-85 LBS. 25.00-45.00; HOLSTEIN HEIFERS #1 90-120 LBS. 100.00-135.00; #2 80-110 LBS. 40.00-90.00; BEEF X BULLS 40.00-67.00; HEIFERS 28.00-50.00.

BUTCHER HOGS: 50 HEAD. US#1-2 220-270 LBS. 43.00; #1&3 41.00-41.50; 1 410 LB. AT 42.00.

SOWS: FEW THIN 500-600 LBS. 30.50.

STOCK CATTLE: STEERS 500-700 LBS. 55.00-71.00; 700-950 LBS. 55.00-57.50.

HEIFERS: 500-800 LBS. 43.00-50.00; HOLSTEIN 250-300 LBS. TO 67.00.

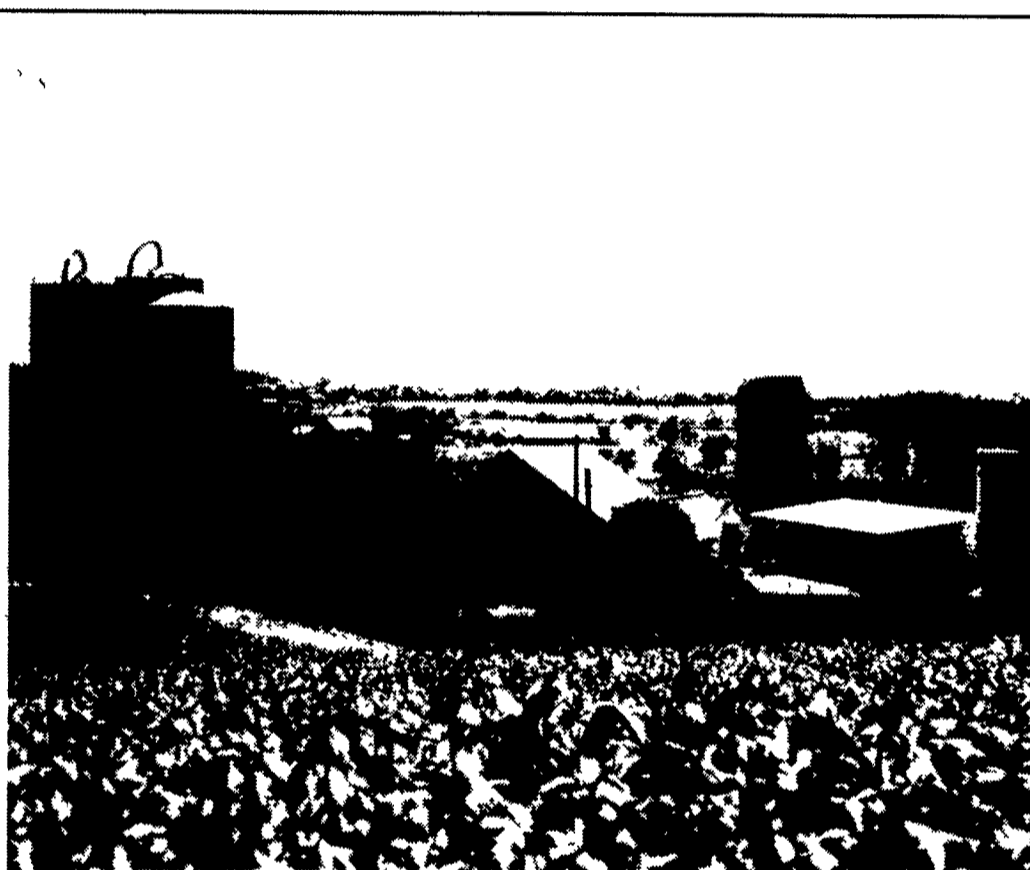
BULLS: 1 430 LB. AT 65.00.

LAMBS: CHOICE 85-100 LBS. 89.00-99.00; 1 LOT 75 LBS. AT 108.00; 1 LOT GOOD AND CHOICE 112 LBS. 76.00.

GOATS: SMALL FLESHY 35.00-37.00; 1 MEDIUM BILLY 54.00.

PIGS AND SHOATS: BY THE HEAD, 5 HEAD 45 LBS. 24.00; BY THE LB. 2 HEAD 192 LBS. 42.00.

BOARS: 740-840 LBS. TO 28.00.



When you need to purchase real estate, we'll be there... generation after generation.

Before you purchase real estate, talk to Farm Credit. As a cooperative owned by the people who use us, we have served the needs of rural Americans for generations. In fact, for over 75 years we have been a dependable source of credit to agriculture.

We make loans at competitive interest rates for all kinds of purposes. Our loan officers are knowledgeable and can help tailor a financial package to fit your situation.

So, whether you are a commercial operator, a part-time farmer or simply like living in the country, we want to do business with you.

And we'll be there for future generations.



Farm Credit
A Customer Owned Business

Southeastern PA
Keystone Farm Credit
(800) 477-9947

Western PA
PennWest Farm Credit
(800) 998-5557

Northern PA
Northeastern Farm Credit
(800) 326-9507

South Central PA
York Farm Credit
(800) 503-8957

