



# News from New Bolton Center...

School of Veterinary Medicine  
UNIVERSITY OF PENNSYLVANIA

## University of Pennsylvania School of Veterinary Medicine Is Looking For Volunteers To "Foal Sit" At Its Neonatal Intensive Care Unit During Foaling Season

**KENNETT SQUARE** (Chester Co.) — Each year during the foaling season New Bolton Center has volunteer opportunities in the neonatal Intensive Care Unit because the neonates require lots of care. Do you have time to volunteer in the spring (an average of one shift a week or more)? Do you like horses and love foals? Are you curious about cutting edge veterinary medicine? If so, join our neonatal intensive care team as a volunteer foal sitter. Every foaling season New Bolton Center's Connelly Intensive Care Unit/Graham French Neonatal Sections provides around-the-clock care for

approximately 100 to 120 critically ill newborn foals and 20 to 30 mares with high-risk pregnancies. Foaling season runs from the beginning of February through the end of June. Our volunteer foal sitters are an important part of the NICU team. The tasks volunteers perform can be tiring, strenuous, and bruising. There is a lot of lifting and kneeling.

**Job Description:** A foal sitter's responsibilities include working with critically ill newborn foals (and occasionally other newborns); caring for recumbent foals by helping them to lie sternally and to stand, and by keeping them clean and dry with frequent grooming and bedding changes; keeping an assortment of oxygen and intravenous fluid lines from tangling and assisting nurses and doctors by holding foals during

treatments; milking and grooming mares; helping with pregnant mares as they are being monitored for signs of impending delivery; helping exercise mares and foals; and assisting nurses with various tasks, including stocking, cleaning of equipment and doing laundry.

**Hours:** Eight-hour shifts are available 24 hours per day, seven days per week. Hours are somewhat flexible, but it is required that all volunteers contribute at least one shift per week.

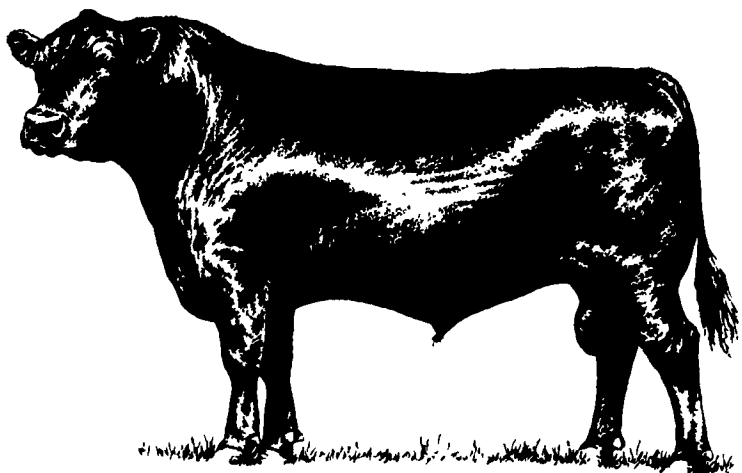
**Qualification:** Volunteers must be at least sixteen years of age and must have their own means of transportation. Horse experience is appreciated but not required. These tasks involve turning and lifting recumbent but often struggling foals. Individuals with problem backs or knees may have difficulty performing these tasks.

**Location:** New Bolton Center is located just off Route 1 at the Route 82/Kennett Square exit, approximately 15 minutes south of West Chester, 50 minutes southwest of Philadelphia, and 25 minutes northwest of Wilmington. Parking at New Bolton Center is free. There is no public transportation in the Kennett Square area.

**How To Apply:** Contact: Dr. Jon Palmer, VMD Associate Professor of Medicine, New Bolton

Center, 382 West Street Rd., Kennett Square, PA 19348, email: jpalmer@vet.upenn.edu Fax: (610) 444-4724.

There will be an organizational meeting for all selected volunteers in January of 1998. The meeting will cover details of the program and include a tour of the NICU. Necessary administrative paperwork will be completed for those individuals who are selected to participate in the program.



## ATTENTION TOBACCO FARMERS

### Oldham/Coastal Leaf

will be back to purchase your 609 type tobacco. We will be operating receiving stations at the same two locations as last year. Call us at either location on Tuesday December 9th for receiving dates and operating hours. Remember to strip your tobacco in 3 grades (tips, middles, and bottoms). All damaged, green or throwout leaves should be baled separately.

Receiving Location #1  
CLARENCE SHIRK'S FARM  
374 S. Farmersville Rd.  
Ephrata, PA.  
(717) 656-9847

Receiving Location #2  
BEHIND ROSS' FEED & GRAIN  
27 N. Church St.  
Quarryville, PA.  
(717) 786-0397

Farm • Home • Auto • Business • Health • Life

## Here To Fill All Your INSURANCE NEEDS



*Weaver Insurance Agency*

'We're Here To Serve'

Roger Slusher - Carol - Cindy  
248 B Maple Ave., Quarryville, PA 17566  
(717) 786-1711 (800) 882-1415

## MAKING A LIST



## AND CHECKING IT TWICE

For goof-proof gift giving, or to add to your own collection, check out our authentic Ford Tractor and New Holland equipment toy replicas.

These die-cast replicas, designed with close attention to detail, look just like their big brothers. And, like their big brothers, they're made to last.

Bring along your holiday list and wrap up your shopping fast... with toys from New Holland.

ALL STANDARD TOYS & FARM SETS UP TO 30% OFF



**LANCASTER FORD TRACTORS, INC.**

Rt. 741 Just Off Rt. 283, Lancaster, PA 17601

Phone (717) 569-7063

For Service that Does Not Stop At A Sales Promise



NEW HOLLAND



automatic farm systems

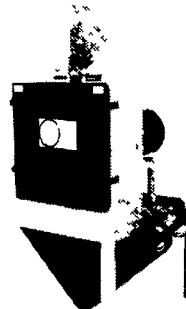
608 E. Evergreen Road, Lebanon, PA 17042

Phone: 717-274-5333

### HAMMER MILLS for Grinding High Moisture & Dry Grains



Grinds Finer than Roller Mills.

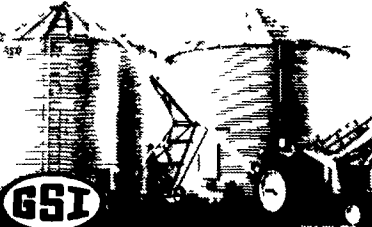


### FEED BINS



Expert Installation

### ON FARM STORAGE FOR MAXIMUM PROFITS

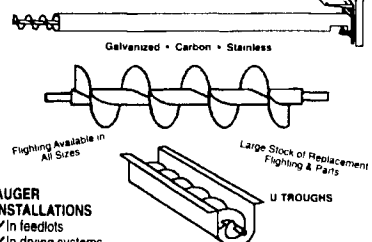


- FARM BINS
- GALVANIZED FANS AND HEATERS
- TOP DRY SYSTEMS
- GRAIN DRYERS
- HOPPER BOTTOM TANKS
- COMMERCIAL FLAT BOTTOM
- FLEX-FLO FEED SYSTEMS
- SAFETY ACCESS EQUIPMENT

We Supply Expert Installation and Service  
Check Our Prices Before You Buy

### CUSTOM MADE AUGERS

Custom made to the length you need



AUGER INSTALLATIONS

- ✓ In feedlots
- ✓ In drying systems
- ✓ Commercial applications
- ✓ At feedmills or elevators
- ✓ Around poultry & dairy barns
- ✓ At your grain bins or bulk tanks
- ✓ Replacement Augers for feed mixers and farm equipment

Standard Auger Specifications

	4"	6"	8"	10"
Tube Gauge	16	14	14	12
Fight Thickness	3/16	3/16"	3/16"	1/4"
Bu/Hr	250	850	2000	3000
RPM	431	431	431	431

Call Us For Custom Specifications

## WE CUSTOM MANUFACTURE.

Painted, Galvanized and Stainless Steel Fabrication, Feed Bins, Feeders, Hoppers, Covers, Dump Pits, Augers, and Control Systems to Automate Your Operation.