

Used Equipment

QUALITY USED EQUIPMENT

COMBINES



JD 9600 Combine, 1993 Yr., 2500 Hrs., 30.5x32 & 14.9x24 Tires, Rock Trap, Fdr-Rev., GLM, Fore/Aft Reel, AHC, Reel to Ground (20098)



CIH 1660 4WD Combine, 1991 yr., 1820 Hrs., 24.5x32 Tires, Spec. Rotor, Rock Trap, Fdr-Rev, GLM, AHHC, Auto Fdr c/o, Reel to Ground, Fore & Aft Chaff Spreader (20999)



CIH 1680 2WD Combine, 1987 Yr., 1866 Hrs., 30.5x32 Tires, Spec. Rotor, Fdr-Rev., AHHC, Auto Fdr c/o, Reel to Ground, Chopper (11677)



CIH 1660 4WD Combine, 1989 Yr., 2747 Hrs., 30.5x32 Tires, Spec Rotor, Rock Trap, Fdr-Rev, GLM, AHHC, Auto Fdr c/o, 3rd Lift Cyl., Reel to Ground, Fore & Aft,



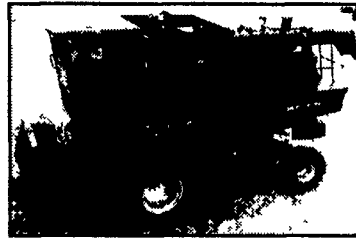
CIH 1688 2WD Combine, 1993 Yr., 850 Hrs., 30.5x32 Tires, Spec. Rotor, Rock Trap, Fdr-Rev, GLM, AHHC, Auto Fdr c/o. 3rd Lift Cyl. Accum., Chopper, Fld. Trkr, Chaff



IH 1480 Combine, 1985 Yr. (20624)



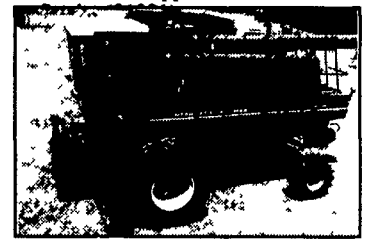
IH 1480 Combine, 1984 Yr., 3587 Hrs., 30.5x32 Tires, Spec. Rotor, GLM, AHC (20240)



CIH 1660 2WD Combine, 1988 Yr., 1952 Hrs., 67x34.00 Flo-Grip Tires, Rock Trap, Fdr-Rev, GLM, AHC, Auto Ddr c/o, Fore & Aft Reel (21357)



IH 815 Combine, 1977 Yr., Diesel, Cab w/AC/Heat, 23.1x26 Tires (20977)



IH 1480 Combine, 1983 Yr., 5000 Hrs., Spec. Rotor (U1001)

TILLAGE



Krause 1497 - 13' Offset Disc Rockflex, 8" Spacing, Blades: Front-23 1/2", Rear -24", Front Ductile Spools, Cyl/Hoses, Center Duals, Furrow Fillers, Regrease, Brgs. (21320)



NH TD200 - 12' Disc, Double Tandem, Dual 12.5Lx15 Tires, Heavy Duty, Double Offset, Hyd. leveling, Spacing: Front 9 1/2", Rear -10 1/2" (21343)



Krause 4924 Disc, 9 1/8" Spacing, Blades: Front 20", Rear-21" (21332)



Krause 4939-18' Disc, Packer Hitch & Hoses (20760)



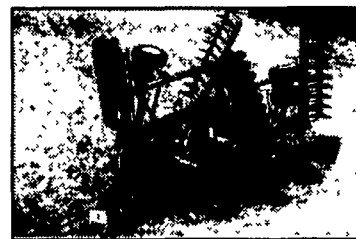
Krause 2242A Disc, 12'4", 1 1/2 Axle, 9 1/8" Spacing Front & Rear, Cyl./Hoses, Scrapers, Blades: Front-18", Rear-18 1/4" Dual Tires (20813)



Krause 2413 - 23' Rockflex Disc, New Blades, New Paint (20709)



JD 310 - 12' Disc, Standard, 20" Blades, Yellow Gang Scrapers, Cyl/Hoses, Center Duals, Furrow Fillers, Packer Hitch & Hoses (20229)



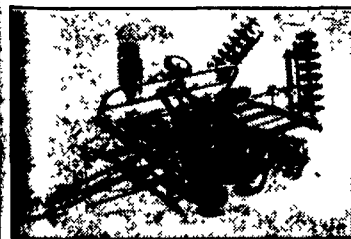
Krause 2416-26' Disc, Rockflex, H.D. Front, Folding, Spacing Front-9" Rear-10", Scrapers, Cyl/Hoses, Ductile Spools, Wing & Center Duals, Furrow Fillers, Packer Hitch & Hoses (20272)



IH 500 Disk, Standard, 13' Cut, 15" Trans, 10" Spacing, Blades 18" Front/20" Rear, Scrapers, Cyl/Hoses, Center Duals (20657)



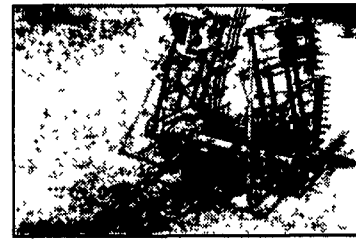
Krause 2413 Disc, 23', 13 4" Trans Width, Spacing 9" Front/10" Rear, Rockflex, Blades 20" Front/22" Rear (20668)



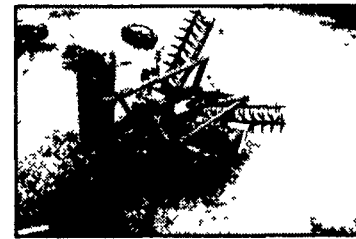
JD 235 Disc, Dura-Cushion 21' Cut Width, 9" Spacing, Blade Size 18" FTG 20" R (T1027)



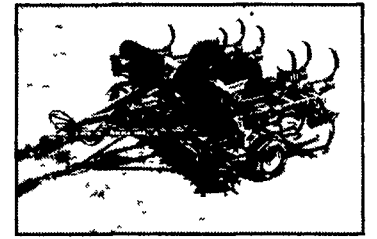
Unverferth 22' Rolling Harrow II, Double Basket, Spike Bar Leveler (20973)



Krause 4129 Field Cultivator, 31', 7" Front Spacing, Packer Hitch & Hoses (20667)



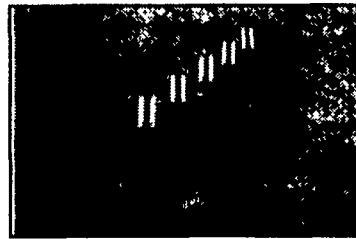
Krause 3206-20' Disc Wing Fold, Rockflex, Spacing Front-9" Rear-10" Blades. Front-23", Rear-23 5" Scrapers, Cyl/Hoses, Ductile Spools, Furrow Fillers (20974)



Krause 4517 Chisel Plow, 15' Discs, Reset Shanks, Auto Reset, 12' Trans Width, 4" Points, Hyd Disc Gangs, Hyd. Lift, Hyd Wing Fold (T1114)



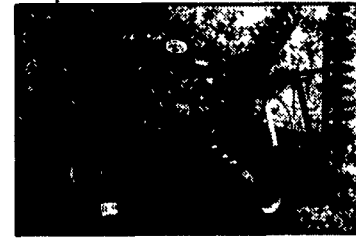
IH 12' Field Cultivator (20661)



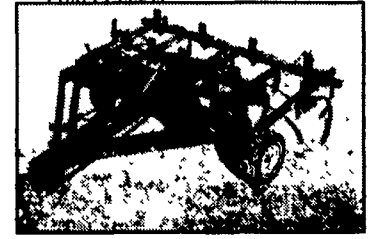
IH 720 Plow 5-18" (T8769)



DMI Tiger II Subsoiler, 7 Shank (20048)



Krause 4927 Rockflex Disc, 25' Cut Width, 9" Spacing, 17" Blades (20299)



Brillion 12 Shank Chisel Plow, 12' Spring Cushion Shanks, Pull Type, (20998)

BER
 B...SON INC
 IN...URSE, PA
 ...WN, DE
 (30...9555

Authorized
 UPS Station

VISA
 MasterCard

McALISTERVILLE, PA
 (717) 463-2191

