

South Central Virginia Farms & Land

Horse Cattle
Dairy Emu

20 Acres - 500 Acres

RE/MAX Advantage Plus

201 A Street
Farmville, VA 23901
804-392-1999



Each office independently owned and operated.

95 ACRE FARM W/5 BUILDING RIGHTS

Add a 2 story original log farm house, summer/spring house w/original cooker ovens, updated barn, paddock, poultry building, implement shed, smoke house, corn crib, new 2 story office/workshop, 2 springs and 2 car garage and what do you have? The perfect farm! (707035)

Call George Card at (717)757-7812 Ext. 435 or Ginny Edwards (717)235-3814 Ext. 143

COLDWELL BANKER Bob Yost, Inc.

CENTRAL VIRGINIA

This nice 54.55 acre farm is located only 10.5 miles from Farmville. 40 acres of grassland bounded by a bold stream and long paved road frontage. There is a nice 3 bedroom, 2 bath ranch home with a garage located on a knoll overlooking this beautiful farm. There is a 30x24 heated workshop with a full walkout basement, 4 stall horse barn, hay barn and a nice lake site behind the home. A good buy for only \$210,000.00

Contact "Mike" or "Kip" Lafoon
Coldwell Banker
Lafoon Realty, Inc.

720 Oak St., Farmville, VA 23901
1-800-767-6191 or 804-392-6191



After 5,
Mike 804-392-4375.
Kip 804-392-3002



NEW ON THE MARKET - 158 acre farm - currently dairy - easily adaptable for beef, horses, etc. Beautiful setting with long driveway, 62 cow barn, heifer facility, silos with covered, enclosed feeding area. 3 bdrm. home, hardwood floors. \$199,900.

717/673-5083

By Owner
David M. Weaver
R.R. 1, Box 122
Roaring Branch, PA 17765

Excellent New 2 Family Living 250 acres, 120 tillable, balance mostly pasture, 36x100 Bank Barn, 35x75 totally enclosed pole barn, 25x60- 3 sided pole barn. Numerous sheds and out buildings. All in very good condition. Now on to the 2 houses. Large New England style colonial with 5 plus bedrooms, large living room and dining room. Big kitchen with wood cookstove. Huge wood shed which could almost be another house. This house needs some work (mostly updating) but it does have a new furnace. House 2 is a decent size 3 bedroom 1 bath in good condition. This is a pretty Farm with Streams running through all the pastures, and lots of river frontage. There is even a 3 or 4 acre island which goes with the deal. The best thing for all this and so much more is the Price. Asking \$139,500.

265 acres 100 tillable, 100 Pasture. 50 woods, Large Bank Barn 40x100 with 16x50 silo. The House burned and has been removed. Close to a mile of road frontage on a quiet road. Land is leased to a local farmer. Several ponds. Borders over 800 Acres of state game lands, and fishing lakes. Asking \$59,900

Dairy, Beef, Sheep, Veal, Maple Syrup, this Farm can do it all. 160 acres, 60 tillable, 30 pasture, balance wooded. 35 Tie Stall Bank Barn, 400 gal bulk tank, 28x170 Heated, insulated, and ventilated Veal Barn Large Sugar House for Maple Syrup making. Large 3 poss 4 bedroom Victorian. Partially Restored with lots of natural woodwork, New England Style Kitchen, with Marble top Baking area and wood Cook Stove. Large Herb Garden, and a Beautiful 120' across by 13' deep Pond. Asking \$94,900.

20 other Dairy, Beef, and Hobby Farms from \$67,500 to \$149,000.

Finley Real Estate
Rural Properties, Farms Residential, Business
207 Montgomery St. • Ogdensburg, NY 13669
24 Hour Phone # 315-393-6325
RUSSEL J. FINLEY
BROKER • OWNER

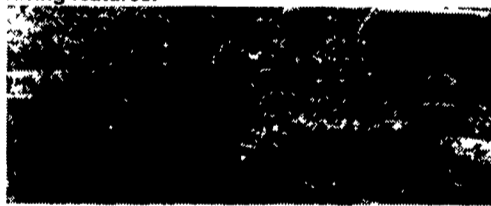
CALL COLDWELL BANKER



118 ACRE GENERAL FARM HUNTINGDON CO.
59 A tillable, 20 A pasture plus wooded with trout stream. Home 3 bdr. 2 bath. 60'x40' bank barn, pond. 30 min. from PennState. Very suitable for beef.



MIFFLIN CO. POULTRY FARM
11 acres with two 3 story poultry buildings, suitable for chickens, ducks, or turkeys. Many labor saving features.



CENTRE CO. - 226 ACRE GENERAL OR BEEF FARM
141 A tillable, 30+ A pasture, ranch home, bank barn, fine shop, outbuildings, private setting, excellent investment opportunity.



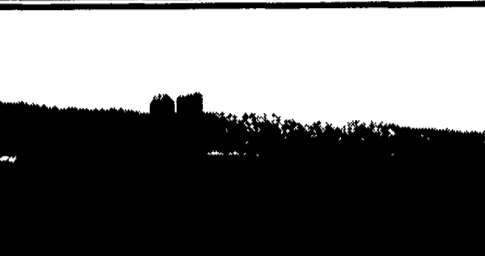
BEDFORD CO. - 205 ACRE GENERAL FARM
195 A tillable, productive land, 2 homes, large quonset barn, easily accessed, very private setting. 200 Acre Dairy Farm Also Available

CALL TOLL FREE FOR DETAILED BROCHURES WITH PICTURES

ADDITIONAL FARMS, FARMETTES, VACANT LAND AND HUNTING LAND PARCELS AVAILABLE. FREE LISTS.

Meet the Agents, View our Complete Inventory on the World Wide Web
www.cbur.com

UNIVERSITY REALTY
126 E Foster Ave. State College PA 16801
800-669-4925 Toll Free
COLDWELL BANKER



DRY RUN ROAD...Ideal family farm. Well maintained 2 story brick home & 2 mobiles...235 acres of limestone soil, 210+ free stalls, double six parlor... excellent feeding system...Priced to sell...Call for a complete packet of information. \$670,000.

BED & BREAKFAST...FRANKLIN COUNTY... Established with customers of Whitetail Ski Resort...4 bedroom 2 story, 4 sets pocket doors...Formal dining room...2 fireplaces...Within 20 minutes of MD/PA line...\$189,900.

BRING THE FAMILY, FRIENDS & ANIMALS... Lots of room for all...43 acres situated at the foot of the mountain...Brand new 3 bedroom 2 story...Living room with fireplace...Full basement...Attached 2 car garage. \$285,000 DON'T PASS THIS ONE BY!!

For more information on these or any of our other rural listings call:

Smith & Associates Real Estate BH&G

Mercersburg office (717) 328-3133
Chambersburg office (717) 264-4300
Greencastle office (800) 766-4414



THE REAL ESTATERS OF MANSFIELD

1671 S. Main St., Mansfield, PA 16933
(717) 662-2138 • Evening (717) 662-2363

HOME, BARN & 100+ ACRES!!!

102.75 surveyed acres in Middlebury Twp., Tioga County, PA. Old 2-story home, needing much work. 2-story barn which could easily be used for beef, horses, sheep, heifers, etc. Seasonal stream. Excellent hunting w/good mix of fields & woods. Wellsboro schools. Just \$85,900. M-875B

BORDERS STATE - OWNER FINANCED!

1.3 surveyed acres bordering state forest between Blossburg & Ogdensburg. Privy top & 1,000 gal conc tank included. All wooded w/open campsite. Just \$10,900 w/\$2,900 down. Bal. 10% 4 yrs. \$202.90 p/m. M-1006

RICHMOND TOWNSHIP ACREAGE

Low priced recreational land in Lambs Creek area w/stream thru property. Just \$595 per acre for approx. 72 acres of woods and grown over pasture. Great hunting area. No perc test at present. Priced accordingly. M-953

ACREAGE BORDERING STATE FOREST

40.20 surveyed acres north of Morris, PA. Approved sewage sites. Mostly wooded parcel with almost 2000 feet of frontage on T-812. Minimal protective covenants, reservations & restrictions. \$29,900 M-844

Rutland Township Farmette

Home, camp or farm flexibility on 44.83 acres of fields, pasture & woods. Seasonal stream. Home needing complete repair. Former 2 sty 49 cow dairy barn stripped & in decent shape. Existing well & septic. Mansfield Schools. \$66,000 M-1013

BEAUTIFUL VICTORIAN HOME

Mansfield area 2-story w/quality renovations completed thruout. 2,542 sq. ft. featuring 4 bdrms, 1 1/2 baths, new kitchen, new roof, new vinyl siding, new wrap-around porch and new huge deck. 2 old barns for garage/shop space. Borders stream w/pleasant old orchard on 8.76 acres. Much more! Asking \$167,500. M-1027

TIOGA COUNTY VEAL FARM

Just minutes to Mansfield from 370 head operation w/excellent track record. Designed for 4 animal groupings. Facility on 22.7 acres. 2 neighbor farms using manure. Motivated seller reducing price from \$140,000 to \$129,900. M-979

FARMS FOR SALE Lancaster & Chester Counties

188+/- ACRE FARM - Large stone house, 65x62 bank barn, 18x26 garage/equipment shed, 18x24 shop and studio, 10x22 stone spring house, 11x17 storage bldg, silo, comcrib, scout cabin, 8x20 greenhouse and more Accessed by private bridge Under Conservation Easements Nottingham Area -Asking \$595,000.

29.4 ACRE FARM - Historic house w/large country kitchen, stone fp, 5 Br's and more Also includes a 92x98 bankbarn w/11 horse stalls and plenty of room for cow stable, 16x20 wash room, 30x40 cornbarn/garage, 8x88 kennel, 12x15 stone summer kitchen w/root cellar, 12x50 silo, 18x22 and 16x26 shed bldgs , 11+/- acre fenced pasture, 6+/- acres tillable. Could all be tilled if needed! Possible Owner Financing Kirkwood Area - \$395,000.

54.8 ACRE FARM - Historic stone house, bank barn, miscellaneous shed buildings, vineyard, and creek on property 30+/- acres tillable Plenty of possibilities as Horse or Dairy farm or simply a Gentlemans Estate Little Britain Area - Asking \$398,000.

28 ACRES GROUND - Half tillable, half woods Good level ground perc for sand mound system Oxford Area - Asking \$98,500.

21.4 ACRES GROUND - Mostly wooded Under Conservation Easement Easy access to major hunt areas for the avid equestrian Gum Tree Area - Asking \$125,000

OAK SPRINGS FARM - 26 4+/- Acre Horse Farm with large brick and stone home with indoor heated pool, tenant house, large bankbarn and addition w/30 horse stalls, 60x100 ring and additional outbuildings, pond and stream, completely fenced Cochranville Area - \$485,000

11.9 ACRES GROUND - Mostly open and tillable Pond and small stream on property Perc for standard inground septic system Oxford Area - Asking \$89,000.

TWO 4+/- ACRE LOTS - Perc for standard inground septic system - Oxford Area Lot #1 - \$39,900. Lot #2 - \$43,000

Call Christ Taylor
BEILER - CAMPBELL REALTORS
Office 610-932-1000
Home 717-529-2629
Toll Free 1-800-529-1118

Maine Real Estate

#1386 - Situated on 15 acres in Norway is a lovely updated 4 bedroom farmhouse with many nice features, exposed beams, wood cookstove in kitchen, brick hearth, large rooms and a great yard with lots of space for gardens, children and animals. All updates are recent, the hard work has already been done! Looks Great!.....\$135,000.

#1389 - Norway - 41 Acre lot with 1,095' road frontage. Town maintained road. Mostly wooded with brook. No restrictions.....\$19,900.

#1358 - South Paris - Outstanding piece of property offered for sale. 152 acres w/approx. 1,400' road frontage. Estimated timber value \$131,000. Potential views.....\$195,000

#1218 - Otisfield - Lovely 1785 colonial home w/original period details large 40'x70' barn w/attached carriage house surrounded by 8± Acres in quiet dead-end location. Eleven rooms & 1 1/2 baths. Eight working fireplaces, wide pine board floors, cozy connecting enclosed porch overlooking fields, plus brick patio w/fireplace. Many more features too numerous to mention. Treat yourself to a walk through history. Shown by Appt. only.....\$149,900

#1192 - South Paris - Nine room farmhouse on secluded 80± Acre lot. Acreage consists of nice fields and wooded area. Good size barn and detached garage. Oil hot air heat and drilled well.....\$109,000

#1322 South Paris - Breathtaking white mountain views, stable, five acres of lovely fields with this classic original cape farmstead complete with three bedrooms, oil heat, in nice condition. Begging for a loving family. Superb area, great price. only.....\$149,900

Call or write: "BUSY AS BEES TO PLEASE"
LAND COMMERCIAL RESIDENTIAL
Biz Realty
(207) 743-9303
(207) 743-5209-FAX
182 MAIN ST • SO PARIS, MAINE 04281