

Life Sci

056034 971031
PERIODICALS DIVISION
PENN STATE UNIVERSITY
W209 PATTE LIBRARY
UNIV PARK PA 16802

Lancaster Farming

Vol. 43 No. 2

Four Sections

Lancaster Farming, Saturday, November 15, 1997

\$28.50 Per Year

60¢ Per Copy

Cow Milks 245 Pounds, Sets World Daily Record

STELLENBOSCH, South Africa — In a posting on Dairy-L on the Internet this week, Dr. Christian Cruywagen, University of Stellenbosch, South Africa, reports that a new daily milk production world record has been recorded right in the university's home town.

A three-and-a-half year-old Friesian/Holstein cow with no glamorous name, only known as 9405, in her second lactation and 66 days in milk, has produced 111.2kg (about 245 pounds) on November 4. This record cow is being milked 4x.

The report noted an interesting side story. The cow's owner, Ludwig van Deventer, is not primarily a dairy farmer, but a wine farmer. He decided some years ago to reduce the number of cows to produce manure for his vineyards. With 9405 eating 36kg of commercial pellets for high producing cows, plus 6kg of alfalfa hay, it can be assumed she is also contributing significantly at the other end towards Ludwig's initial goal.

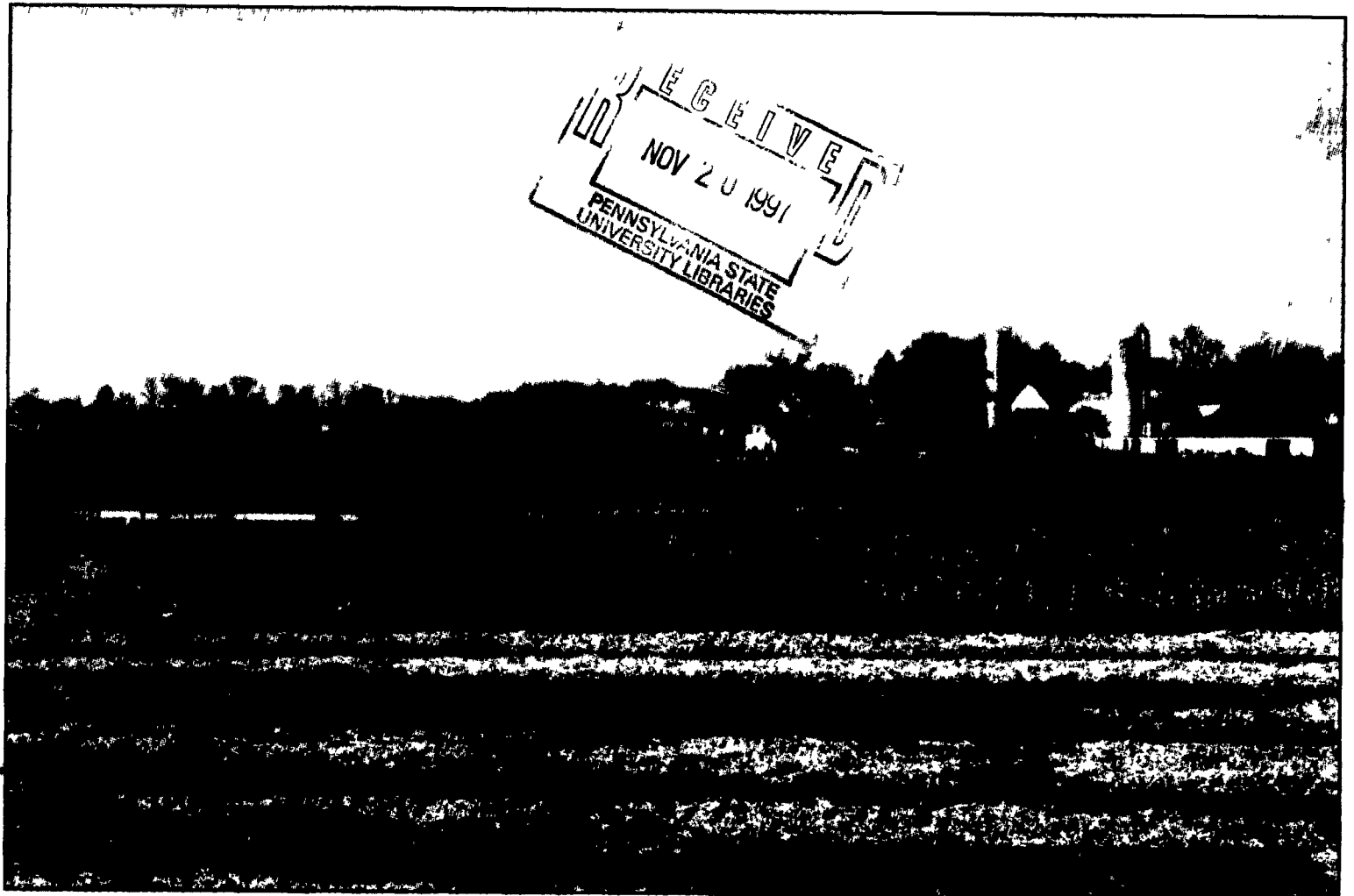
Avian Quarantine Lifted

ANDY ANDREWS

Lancaster Farming Staff
HARRISBURG (Dauphin Co.)

— On Monday afternoon Pennsylvania Secretary of Agriculture Sam Hayes signed a rescission order that officially lifts the avian influenza (A.I.) quarantine that has been in place since mid-May this year in northern Lancaster County.

(Turn to Page A42)

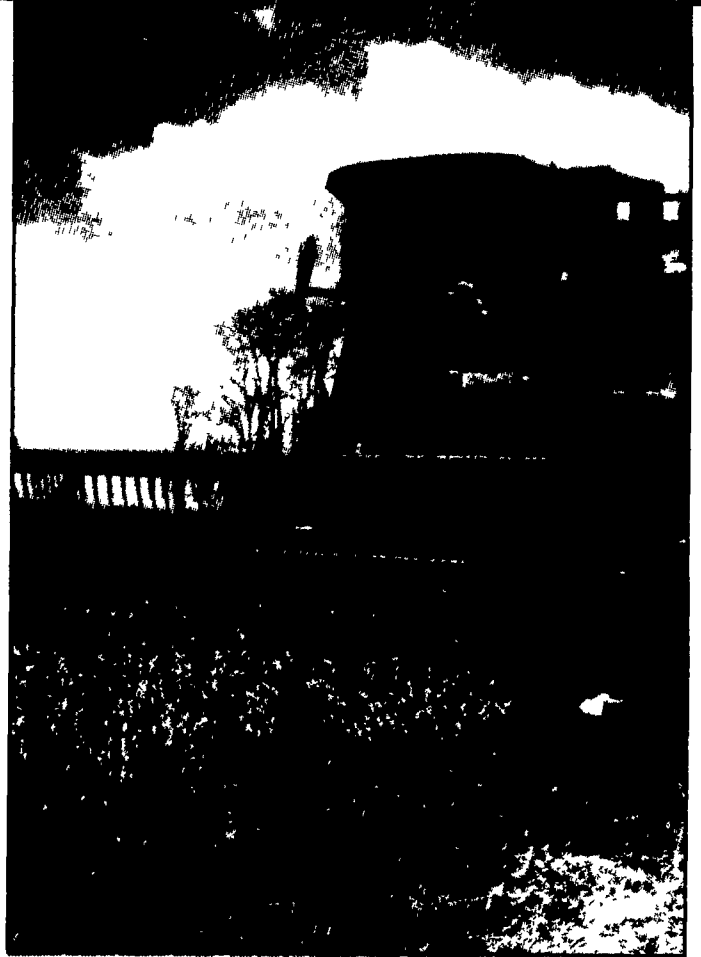


Many of the fields you see in a drive through the country have already been harvested. Only patches of late corn and soybeans are still standing. The Pennsylvania Agricultural Statistics Service reports that late planted corn is coming to maturity in most areas with harvesting of high moisture corn still active. Some problems have surfaced with slow drying of corn for grain.

According to Brian Kreider in the combine above, after-barley soybeans have dried out now, but after-wheat soybeans are still too high in moisture to harvest.

Hard frosts have stopped growth in most parts of the state, and the area was looking for the possible first snow of the fall over this weekend. In fact, earlier Wednesday, a few snow flurries were reported at the location of this harvesting scene in Lebanon County. But when the photographer caught up with the work-in-progress off route 501 at Reistville, the late fall afternoon sun was casting strong shadows to help emphasize the landscape while a canopy of blue sky held fluffy white clouds overhead.

Kreider, who graduated from Penn State last spring with a degree in dairy and animal science, has come home to the family farm. In his first fall harvest out of school, he was driving the custom combine for Melvin Zimmerman. Photo by Everett Newswanger, managing editor.



Minnesota Judge's Order Has Milk Industry In Uproar

EVERETT NEWSWANGER
Managing Editor

WASHINGTON, DC — Late last week U.S. Minnesota District Judge David Doty threw out a Depression-era system of 32 milk marketing orders that pay farmers a price differential for milk based on their distance from Eau Claire, Wis. The ruling that a key portion of the country's milk pricing policy is illegal eliminates federal order class I differentials to all but a few geographic areas in the Southeast. In the eight-year-old lawsuit by the Minnesota Milk Producers

Association, Doty ruled that the milk price system makes no sense. Farmers from the Upper Midwest have complained for years that the system was outdated and discriminated against them. But dairy farmers outside Minnesota and Wisconsin like the system the way it is. They don't want to lose what they've got.

"Upper Midwest political leaders and Judge Doty don't fully realize the negative economic impact this will have on producers in their own home states," said Gene Paul, National Farmers president. The

National Farmers Organization is headquartered in Ames, Iowa.

"Many Minnesota and Wisconsin dairy producers are unaware that they will (also) lose approximately \$55 million annually. The ruling is critically important because current producer pay prices are not high enough to cover their expenses to produce it," Paul said.

Because of the immediate uncertainty the ruling rendered, some milk handlers were already refusing to pay established farmer

(Turn to Page A41)

Deadlines Change For Thanksgiving

The Lancaster Farming office will be closed Thursday, November 27 in observance of Thanksgiving Day. News and advertising deadlines for that week are as follows:
• Public sale ads — Noon, Monday, 11/24.
• Mailbox markets — 5 p.m.,

Friday, 11/21.

• General news — Noon, Wednesday, 11/26
• Section D ads — 5 p.m., Tuesday, 11/25.
• Farm equipment ads — 9 a.m., Wednesday, 11/26.
• All other classified ads — 5 p.m., Wednesday, 11/26.