



NOVEMBER 10-16, 1997

FULL BEAVER MOON, NOV. 14.

THE NORTH WIND DOTH BLOW...

If it was unseasonably cold at Halloween, then weatherlore predicts a period of unseasonably warm weather, or Indian Summer, around St. Martin's (Nov. 11) until about November 20. Use the good weather for those last-minute winter preparations. Have you had your chimney cleaned? Your furnace air ducts and filters checked? Is your wood all split, or as near to it as you're apt to get? If you're left with a few, huge unspittables, put aside the splitting wedge and maul, and think toward Christmas. Everyone needs a yule log of exemplary proportions...



While we consider when to begin, it becomes too late.

TIP OF THE WEEK

Light bulbs can lose up to 40 percent of their efficiency if covered with dust or grease, so clean them occasionally.

NEW ENGLAND BOILED DINNER

- 5 pounds corned beef
- 8 large carrots, sliced
- 6 medium onions, quartered
- 2 small turnips, cubed
- 8 potatoes, quartered
- 1 small head cabbage, cut in wedges
- pepper and parsley, to taste

After 2 1/2 hours, skim off the fat and add the prepared vegetables, holding out the potatoes and cabbage until the last half hour of cooking. Season, and serve on a large platter, with additional parsley to garnish

Makes 8 to 10 servings.



Place the meat in a Dutch oven and cover with water. Bring to a boil, reduce heat, and simmer, covered, about 3 1/2 hours, or until tender

THE OLD FARMER'S WEATHER PROVERBS



Where the wind is on Martinmas Eve (Nov. 10), there it will be for the rest of winter.

If the weather is dry and cold on St. Martin's Day (Nov. 11), the winter will not last long.

If All Saints (Nov. 1) brings out winter, St. Martin's (Nov. 11) brings out Indian Summer.

Westminster Livestock Auction

Hagerstown, Md. November 4, 1997

Report supplied by auction
SLAUGHTER COWS: 143 HEAD, 1.00 LOWER. UTILITY: 33.00-37.00; HIGH DRESSING 37.50-39.00, 1 AT 41.00; CANNERS 27.50-32.00; SHELLY 27.00 DOWN.

BULLS: 10 HEAD, 2.00-3.00 LOWER. YG#1 38.00-40.50; YG#2 35.50-38.00. FED STEERS: AVG. CHOICE 1100-1300 LBS. 63.00-67.00; SELECT 55.00-59.00; LOW CHOICE 59.00-62.50; 2 CHOICE HOL X 61.00 AND 63.50. FEW HEIFERS: FEW OFFERED. VEAL CALVES: 160 HEAD. GOOD TO LOW CHOICE 200-300 LBS. 50.00-65.00; CULLS 85-110 LBS. 27.00-31.00, FEW TO 35.00; 60-80 LBS. 19.00-27.00.

FARM CALVES: HOLSTEIN BULLS #1 98-120 LBS. 80.00-101.00; 88-89 LBS. 50.00-80.00; #2 80-95 LBS. 32.00-50.00; HOLSTEIN HEIFERS #1 90-120 LBS. 110.00-127.00; #2 80-110 LBS. 70.00-100.00.

BUTCHER HOGS: LIGHT RUN. 1 LOT #1&3 254 LBS. AT 44.00; FEW 265-350 LBS. 33.00-38.00.

SOWS: 500-650 LBS. TO 36.00. STOCK CATTLE: 309 HEAD. BIDDERS SELECTIVE FOR QUALITY. STEERS MED. AND LARGE FRAME 200-400 LBS. 65.00-74.00; 400-600 LBS. 64.00-73.00; 600-800 LBS. 59.00-66.00; 800-1000 LBS. 54.00-64.00.

HEIFERS: MED. AND LARGE

FRAME 300-500 LBS. 52.00-60.00, FEW 61.00-65.00; 500-700 LBS. 58.00-68.00; 700-800 LBS. FEW 60.00-63.00.

BULLS: 200-400 LBS. 60.00-72.00; 400-600 LBS. 52.00-65.00, 1 AT 70.00; 600-800 LBS. FEW TO 61.00; 800-950 LBS. 46.00-52.00.

LAMBS: STRONG DEMAND. CHOICE 100-125 LBS. 84.00-94.00; 80-99 LBS. 85.00-95.00, FEW TO 110.00; 60-80 LBS. 100.00-120.00; 50-60 LBS. TO 112.00.

SHEEP: 35.00-48.00; FEW 50.00-58.00. GOATS: 71 HEAD. LARGE BILLIES 75.00-110.00; MEDIUM 50.00-75.00; SMALL/YOUNG 10.00-25.00.

PIGS AND SHOATS: 167 HEAD. ALL SOLD BY THE LB. IN GRADED SALE. CONSIGNED IN LOTS OF 12 HEAD OR LESS, 16 HEAD 30-38 LBS. 60.00-72.00; 55 HEAD 40-49 LBS. 75.00-79.00; 5 HEAD 59 LBS. 70.00; 16 HEAD 60-69 LBS. 54.00-65.00; 19 HEAD 74-78 LBS. 71.00; 4 HEAD 91 LBS. 54.00; LOWER GRADES 30-60 LBS. 45.00.

NEXT TUES., NOV. 11: SPECIAL FEEDER CATTLE SALE, 7:45 P.M. PROMISED: 15 HOL STEERS, 300-800 LBS.

Valley Stockyards

Athens, Pa.

November 3, 1997

Report Supplied By Auction
HOLSTEIN HEIFER CALVES: TO 162.50.

VEAL CALVES: NONE. VEALER BULL CALVES TO 120.00. SLAUGHTER CALVES 26.00 AND DOWN.

GRASSERS AND FEEDERS 21.00-48.00.

LAMBS TO 67.50. SHEEP 25.00-42.00.

HOGS, 200-250 LBS. 41.00-48.00. SOWS TO 30.00.

BOARS TO 25.00. PIGS TO 29.00.

HEIFERS TO 34.00. STEERS TO 54.00.

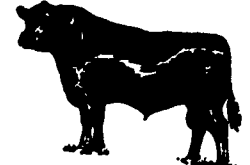
STEERS, FEEDER, 38.00-60.50. BULLS TO 37.50.

COWS, GOOD, 32.50-38.25. COWS, MEDIUM, 27.00-31.75.

COWS, POOR OR SMALL, 26.75 AND DOWN.

HORSES, NONE. PONIES, NONE.

GOATS 57.00-68.00.



WALTER M. DUNLAP & SONS

Lancaster Stockyard 717-397-5136
1147 Litzitz Pike, Lancaster, PA

Special Fall FEEDER CATTLE SALE

Friday, November 14 - Noon

Lancaster Stockyards

Fresh from the FARM - we have lined up Load Lot Consignments featured for these SPECIAL SALE DATES
Regular Feeder Cattle Sales will be held every Friday thru Nov. 21

—CONSIGNMENTS WELCOME—

WANTED Freestall Herds

Any size, Registered & Grade

Willier, Incorporated



Inside PA: 717-626-3113

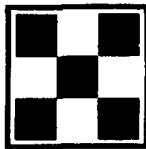
Outside PA: 1-800-485-2233

United Feature Syndicate

(Printed in the U S A)

200 Madison Ave
N Y, NY 10016
(212-293-8500)

AVAILABLE SPRING '98

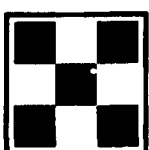


WEANER and/or FEEDER PIGS



Take Advantage of the Benefits of Single Source, Multi-site Raised Pigs

- Features:
- 1600 pigs available/week
 - Single source supply
 - Located in Central PA
 - AI for best genetics
 - Availability sized to finisher needs
 - Financing assistance available



PURINA MILLS, Inc.
800-873-5300

Manufacturing Facilities: Lancaster, Harrisburg, Hagerstown, Wyalusing and Knoxville

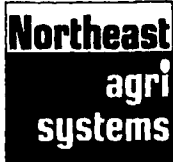
The complete cage systems package from Chore-Time offers egg producers better egg production at a competitive price with local technical service support. The complete package, which features Chore-Time's exclusive GALV-A-WELD* (galvanized after welding) cages, also includes

- Chore-Time's famous ULTRAFLO* Cage Feeding System—the leader in outstanding results and reliability
- Chore-Time's ULTRA-LIFT* XL Egg Collection System—the standard of the industry for gentleness and efficiency

• Chore-Time's Cage Nipple Drinking System—a simple, totally-enclosed system for providing more water to your birds

• Chore-Time Cage House Ventilation and Cooling Systems—excellent performance at a competitive price

So, join the producers who have already benefited from using Chore-Time Cage Systems. Improve your egg production with Chore-Time's complete cage systems package. Call today for more information



Northeast Agri Systems, Inc.

Flyway Business Park
139A West Airport Road
Litzitz, PA 17543
1-800-673-2580
Ph: (717) 569-2702

Delmarva Office
305 University Ave.
Federalsburg, Md.
1-800-735-6361
410-754-9434



Store Hours: Monday-Friday 7:30 am to 4:30 pm
24 Hour-7 Day Repair Service



Chore-Time Cage Systems • A Division of CTB Inc • State Road 15 North • P.O. Box 2000 • Milford Indiana 46542-2000
Phone (219) 658-4101 • Fax (800) 333-4191 or (219) 658-3471 • E-Mail Address ctb@ctbinc.com