

Farm Women

(Continued from Page B2)

This year, the county project was Hospice of Lancaster County. During the Saturday celebration, members donated \$2,950 to Hospice.

Tina Texter, community liaison for Hospice, accepted the donation and expressed appreciation for the diligent support Farm Women continue to show for Hospice.

Donations throughout the year included the American Heart Association, community libraries, children's homes, Make-A-Wish Foundation, hospitals, women's shelters, and Self Help.

Informative meetings on breast cancer, food safety, tax reform, medicare, living wills, water pollution, estate planning, and explaining a futures contract were a few of the topics addressed throughout the year.

"I don't believe there's another group of people in the county who

do more for their fellow men or women when there is a need than you," said Allegra Leiningr, who was installed as president during the afternoon session.

Other officers installed by Lois Hughes, state president, included Barbara Nissley, vice president; Julia Zahn, secretary; and Verna Hostetter, treasurer.

But Farm Women activities don't always involve only raising funds and business sessions. Members enjoy Victorian tea parties, holding an Irish program with everything colored green and telling corny Irish jokes, dinner theaters, trips, and socializing with other society members.

Ninety-year pins were presented to Marion Fuhrman, Society 1; Ruth Zeamer, Society 4; Martha Weidman, Society 5; Alma Maule, Society 15; and Reba Gring, 100 years old.

On a somber note, members
(Turn to Page B5)



Katherine Fry, left, congratulates Martha Weidman, center, for reaching 90 years and remaining an active member. Martha is the mother of Arlene Witman, right. Both held many offices including county president. The mother and daughter team exemplify many members who joined because their mothers and grandmothers were members.



"Quality is remembered long after price is forgotten"

1925 West Main Street, Ephrata, PA 17522
717-738-3781 Fax 717-733-2226

Wholesale distributor of
**Nuts, Dried Fruits,
Candies, Coffees,
Sugars, Pastas & Teas**

More Than 5,000 Varieties

We are a wholesale distributor and importer of only the finest nuts, dried fruits, candies, sugars, flours, Shanks Extracts, coffees, teas, pastas, and much more. We carry over 5,000 items!

Weaver Nut Company, Inc. travels to England, Germany, Holland, Turkey, Brazil, and the Philippines to contract large amounts, which allows us to give you the lowest wholesale prices. Our other company, "Food Brokers International," brings in container after container of everything from the latest snack sensations to traditional favorites. We sell to distributors, importers, and almost 3,600 bulk food stores, grocery stores, and convenient stores all over the USA.

We have 5 price brackets in our master price catalog, which go by volume, or size, of orders. Our catalog is designed for any size order, and it will save you more money the larger the order. We also have 4 price brackets in our Food Brokers International catalog, which is designed for our customers who buy large quantities (over 150 cases). Please ask us for a 150 page master price catalog, which describes each of our items or a 70 page Food Brokers International catalog. We will supply you with everything you need at the best prices anywhere. In most cases we sell cheaper than the manufacturer does, due to our large contracts.

Do yourself justice, don't pay more than you should. Really, come see us at our two outlet stores, and we will be happy to show you around. Or call, and we will send you a catalog.

Please check-out our low prices, and see for yourself how much lower they are than other major wholesale retail stores.

Don't forget, stop by Edward's Coffee Shop at Weaver Nut Company Outlet store in Lancaster for a great breakfast or lunch. 1 mile East of Mountville on Columbia Avenue. We serve only the finest gourmet coffees, fresh homemade pies and pastries, delicious soups and sandwiches, and Beck's homemade ice cream.

Weaver Nut Company
OUTLET
STORES

Lancaster
3519 Columbia Avenue
Lancaster, PA 17603
Phone: (717) 285-3818

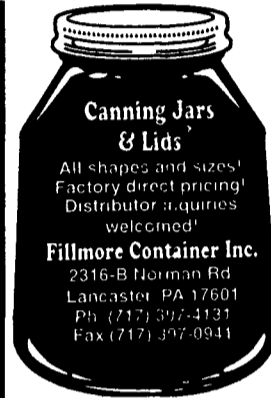
Ephrata
1925 West Main Street
Ephrata, PA 17522
Phone: (717) 738-3337

Hours: Mon.-Fri. 8:30-8:30 Sat. 8:30-5:00
Sun. Closed



3519 Columbia Avenue
Lancaster, PA 17603
Phone: (717) 285-9688

HOURS: Mon.-Sat. 6:30 AM - 3:30 PM
Sun. Closed



**A LESSON
WELL
LEARNED...
LANCASTER
FARMING'S
CLASSIFIED
ADS
GET RESULTS!**

The Apple Lady's
Special Recipes and Inspirational Poems
Cookbook
Over 100 Apple recipes
A portion of the proceeds go to the American Cancer Society.
\$4.95
plus \$2.00 S&H to:
M. Mohlar
2930 Cowley Way, No. 308,
San Diego, CA 92117



PREMIER LEADERSHIP
Personal Growth
CAREER SUCCESS

Through Agricultural Education