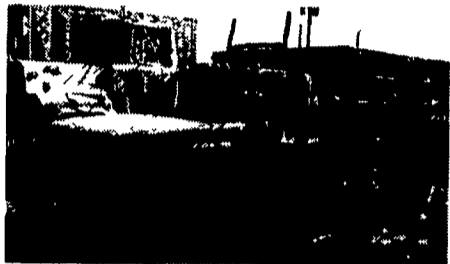


YORK MACK
YORK GMC TRUCK
 55 S. FAYETTE ST.
 YORK, PA 17404-0833
(717) 792-2636
 BRIAN SACKETT



87 Iveco 230T
 12' Stake Body w/Cylinder Gate, 16,900 GVW
\$1,950



85 Chevy - One Ton 12' Stake Body w/ Tuk-Away
 Lift Gate, Low Mileage
\$5,800



70 Ford L800 Rollback 33,000 GVW, 391 HP, 5/2 Speed, 22' Grove Roll Back Bed w/Stabilizer & Tow Bar, 12,000 Lb Winch
\$8,950

BICYCLES
REPAIRERS
 FREE UP
1-800-LEAVIN
1-400-832-8373

MOTORS
 New & Rebuilt
 350, 366, 427, 454
 6.2 Diesels
 Rebuilt & Used
 Will Install
 Roll Back Service,
 (at cost)
717-762-6415

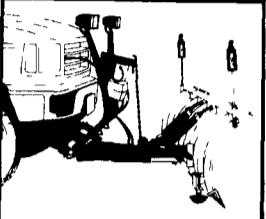


JCB loader, 4 wheel drive, model 520M, 42" forks, rebuilt engine, lifting height 13'
 Wm. Cohen & Sons • (610) 269-1298



1985 Mack Super Liner
 350 Cummins, 10-Spd. Trans., Good Rubber,
 New Brakes, AC
\$12,500
717-529-2512 No Sunday Calls

NOW YOU SEE IT...

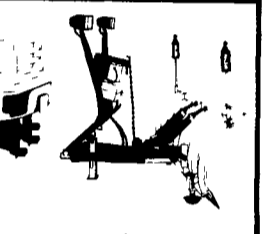


Unimount

At all times, all maintenance should be performed by a qualified technician. The manufacturer's instructions should be followed.

WESTERN
 SNOWPLOW

NOW YOU DON'T!



FINANCING AVAILABLE

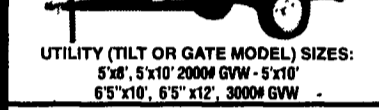
Yarnall's
Equipment Co., Inc.
 4171 Horseshoe Pike (Rt. 322)
 Honey Brook, PA 19344
 Toll Free:
 1-888-900-SNOW (7669)

ALL STEEL REPLACEMENT TRUCK BED

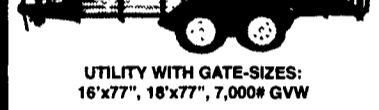


7'X70"W or 80"W
 8 1/2' Lx80"W or 90"W
 10'Lx8"W, 12'Lx8"W

Also Available In 4'x7' and 4'x8'
 5'x8' Starting at \$650
 5'x10' Starting at \$695



UTILITY (TILT OR GATE MODEL) SIZES:
 5'x8', 5'x10' 2000# GVW - 5'x10'
 6'5'x10', 6'5'x12', 3000# GVW



UTILITY WITH GATE-SIZES:
 16'x77", 18'x77", 7,000# GVW



CAR HAULER TRAILER:
 16'x78" & 18'x78" includes 5' Beavertail
 7,000 lb. GVW 4' self storing ramps

Car Dollie



Special \$795

Highway Hydraulic Dump



5'x8', 3000# \$2,095
 5'x8', 5000# \$2,495
 6'x10', 7,000# \$3,195
 6'x10', 10,000# \$3,495
 7'x12', 10,000# \$3,995

LOW PROFILE DUMP TRAILERS

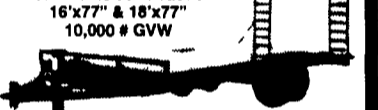


6'x10' GVW low profile dump trailers w/ landscape gate
 7,000# \$3,495
 10,000# \$3,895

Starting At \$3795 w/4' Adj. Tail



GOOSENECK SIZES: 20'x8' 12,000# or 14,000# GVW, 24'x8' 14,000# GVW



Low Profile construction 16'x77" & 18'x77" 10,000 # GVW

DECK-OVER CONSTRUCTION 14'x7' With Tail, 3000# or 4000# GVW 16'x8' With Tail, 7000# GVW 20'x8' w/Tail 10,000# GVW \$3,195

Over 300 Trailers In Stock
 Starting At \$475.00
 T-Plates
DEALERS WANTED



KUTZ FARM EQUIPMENT, INC.
 Pine Grove, PA (717) 345-4882 FAX 717 345 2884
 8 AM-5 PM Monday To Friday
 8 AM-12 Saturday Or By Appointment

BOWERS
USED CARS INC.
 Route 30 West of Abbottstown, PA
 7015 York Rd. 717-624-7072



86 CHEVY 30 SERIES
 12 Stake V 8 4 speed
 PS PB 67 000 miles Clean \$6,995



88 ISUZU 4X4
 4 Cyl 5 Speed PS PB
 Removable Hard Top \$4,500



92 FORD SUPER DUTY
 12' BOX TRUCK
 7.3 Diesel 5 Speed PS
 PB Mint Condition \$12,500



89 CADILLAC SEDAN
 DeVILLE
 One Owner Mint Cond
 All Service Records \$7,995



95 PLYMOUTH GRAND
 VOYAGER
 8 Pass Fully Equip \$12,900



91 FORD EXPLORER
 XLT 4X4
 V 8 Auto
 Fully Loaded \$8,995



93 FORD F250 XL 4X4
 8600 GVW, Mayer Power Angle Snow Plow
 351 V 8 Auto PS
 PB AC 99 000 Miles \$11,900



90 FORD F250 XLT
 LARIAT
 351 V8 Fully Equip
 76 000 Miles \$9,500



83 FORD F150 EXT. CAB
 4X4 XLT
 351 V 8 Fully Loaded
 One Owner \$11,900



90 GMC 1500 EXT. CAB
 4x4
 Loaded \$10,500



93 CHEVY SILVERADO 20
 SERIES 4x4 One Owner
 Loaded Power Angle
 Snow Plow
 Only 29 000 Miles \$7,995



94 CHEVY SUBURBAN
 1500 4x4
 Loaded, Mint Cond
 High Miles \$19,500

RINGO TRUCK BODIES

Headboard (Square or Tapered), Stake Pockets, Rubrail, Smooth Steel Plate or 2" Wood Floor, Heavy Duty Construction
 OPTIONS Diamond Plate Floor \$10 per linear Ft

Length	Width	Frame Width	Price
7 FT	66"	38" or 40"	\$595
7 FT	80"	34,38 or 40"	\$600
8 1/2 FT	80" or 90"	34" or 38"	\$600
8 1/2 FT	94" or 96"	34" or 38"	\$700
10 FT	90"	34" or 38"	\$750
10 FT	94" or 96"	34" or 38"	\$820
12 FT	90"	34" or 38"	\$1100
12 FT	94" or 96"	34" or 38"	\$1150
14 FT	94" or 96"	34" or 38"	\$1350

ASK US ABOUT SPECIALS UP TO 24 FT. LONG

Accessories:
 Solid Steel Sides
 Steel Slat Sides
 Plastic Slat Sides



Gooseneck Ball Hitches & Sub Frames



Drop Hinge Scissor Hoists Systems



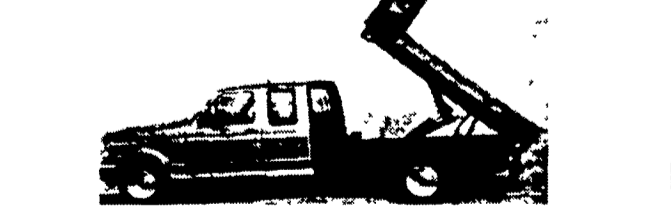
Trailer Hitches & Accessories Underbed Tool Boxes Installation Available

Commercial Truck Bodies



Sizes - 10-18 FT.
 Types -Grain bodies
 Trash bodies
 Chipper bodies
 Call with your needs
 Cab & Chassis also available

DUMPING TRUCK BODIES



LENGTH	WIDTH	PRICE
8 1/2'	80/90"	\$2,575.00
9 1/2'	90"	\$2,990.00
12'	90"	\$3,500.00

Includes Flat Bed With Headboard Scissor Hoist, Sub Fane, Electric Hydraulic Pump & Cab Printed Controls. Easy to Install, simply Bolt sub frame to your truck. Installation Available.

Ringo Hill Farms Equipment Co., Inc.
 1624 Rt. 212, Quakertown, PA. 18951
 Phone (610) 346-7340 Fax (610) 346-8041
 Call For a FREE Catalog or for a Dealer Close to You