

Now taking orders for tire chain sale until 11/24/97. We specialize in nylon and wire rope slings. Chain and nylon ratchet binders. Towing and recovery items also available. In-house manufacturing to your specifications. 814-623-0447 (Bedford) 717-261-0066 (Chambersburg)

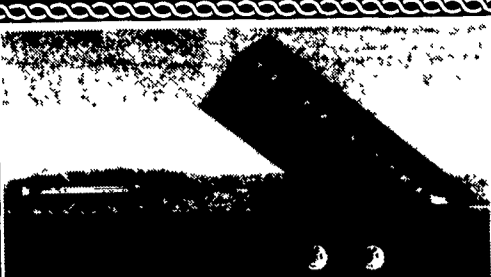
Mack manure truck 4700 gallon, all new rear suspension, new batteries, spreader lights, good tires. Good running truck, field ready. \$9200. (610)932-8986

ROLLBACK TRUCK 1980 Chevy 1 ton w/Jerr-Dann Super Five bed, 1 owner, 50,000 miles. Must See! \$9,500. 410-833-9091

Tank trailer, 8500 gal aluminum, 4 compartment, vapor recovery, \$3,750. (215)343-0158.

WANT 17 1/2' steel dump body, complete. (215)357-1123.

WANTED: Windshield for Dodge '89 Dakota pickup, regular cab. 717-758-2136



16' Donahue Grain Dump Trailers, 16,000# GVW, 40" Sides With Dump Thru Gate, Hydraulic Jack
Was \$9,965 **NOW SPECIAL \$9,355**
SAVE \$610 ONLY ONE IN STOCK
END OF SEASON - MUST GO - WILL CONSIDER ALL REASONABLE OFFERS

HOSTETLER
Truck Bodies & Trailers
717-667-3921
Milroy PA Located between Lewistown And State College on Rt 322 in PA

Used Truck Bodies



Installed on NEW or Old Truck
"Makes your Old Truck Look Like NEW!"
• Dry Van Bodies 10' to 24' • Reefer Bodies
• Flat Bodies
(Completely Refurnished Bodies in Most Cases - Same Day Service!)
Phone 717-898-0683
CHARTER ENTERPRISES, LTD.
270 Hostetter Road, Manheim, Pa

LEFEVER BROS. CHEVROLET CHEVY TRUCKS GEO

YOUR DIRECT LINE TO GENUINE GM PARTS

(800) 533-3837

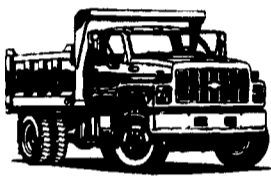
When you call the number listed above, you'll reach our wholesale parts specialists, who can help you keep your GM repair work moving quickly.

Ask about:

- Specializing in GM Medium Duty Trucks, Current and Obsolete.
- \$500,000 Parts Inventory.
- Parts Locator for Those Hard to Find Items.
- We Ship Anywhere, Local Delivery Available.
- Experienced, Knowledgeable Personnel.

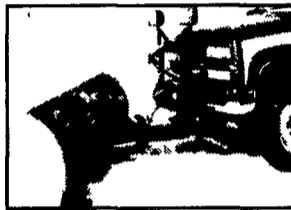
Mon., Tues., Thurs., Fri. 7:30 a.m.-4:30 p.m.
Weds. 7:30 a.m.-8:30 p.m.
Major Credit Cards Accepted
(717) 432-9697
Quality Dealer Since 1921
406 U.S. Rt. 15, Dillsburg, PA 17019

GM Goodwrench Service

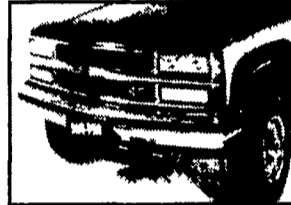


Kodiak Chevy Trucks CAT DIESEL POWER

CURTIS SNO-PRO™ 2000 Series

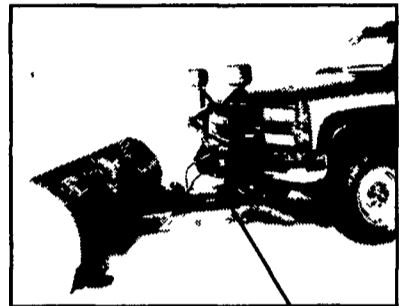


TAKE YOUR START



90 SECONDS LATER

Between Snowfalls...
The **Curts** moldboard removes in seconds, leaving only the Patent Pending **VERSA-MOUNT™** remaining for future add-ons
7 1/2' To 9' Plows Available
Starting at \$2175⁰⁰
90 Days Same As Cash



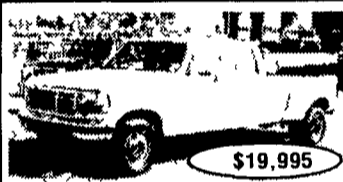
HIDE-AWAY™ HYDRAULICS



WANT DEALERS
LANCASTER
HARRISBURG
OTHER PA

ROCK SPRING HARDWARE

in CECIL COUNTY • 3 Miles North Of Conowingo
1320 Rock Springs Rd. (Rt. 222) • RISING SUN
Hours: Mon -Sat. 8 am-8 pm, Sun 8-6 pm
410-658-5978 ☎ 1-800-858-0288



95 FORD F350 CREW CAB DUALY
Power Stroke Diesel 5 Spd XLT A/C PW PL C T High Miles Looks & Runs Like New #F680



Preferred Warranties Available on Most Trucks

Bobby Gerhart's Truck World

Mon. - Fri. 9-8, Sat. 9-3

2400 E. Cumberland St. Rt. 422 Lebanon, PA 17042 717-273-7995



96 FORD F250 EXT. CAB 4x4
Power Stroke Diesel XLT. AT A/C Loaded 31,000 Miles, Blue #F654



96 FORD F250 SUPERCAB 4X4
Power Stroke Diesel, 5-Spd., A/C, XL Trm. Short Bed, 23,000 Miles, Black, #F651



96 FORD F250 CREW CAB 4x4
Shortbed, Power Stroke Diesel, AT, A/C, XLT Trm, Alum Wheels, 35,900 Miles, Fact Warranty, Maroon & Silver #F637



95 DODGE RAM 2500 LARAMIE SLT 4x4
Cummins Turbo Diesel, AT, A/C, PW, PL, C, 63,000 Miles, Green/Driftwood #D216



95 FORD F350 CREW CAB DUALY 4x4
Power Stroke Diesel, AT, A/C XLT-Loaded, Alum Wheels, Running Board, 39,000 Miles, Gooseneck Hitch #F652



95 DODGE 3500 DUALY
Cummins Turbo Diesel, AT, A/C PW PL C T 44,000 Miles, Blue & White #D218



93 FORD F350 CREW CAB DUALY 4X4
Centurion Conversion Pkg., 460 V8, 5 Spd., XLT Loaded, Rear Fold Down Bed, Alum Wheels, Only 48,000 Miles #F658



95 FORD F350 4X4 CONTRACTOR DUMP
Power Stroke Diesel, 5-Spd., PS, PB, 72,000 Miles, Black, #F678



95 GMC K3500 Ext. CAB Dually 4x4
6.5 Turbo Diesel, AT, A/C, Sierra, SL, 39,000 miles, 2-Tone Blue/Silver #6175



95 FORD F250 XL 4x4
Power Stroke Diesel, AT, A/C, PS, PB, 41,000 Miles, 8,600 GVW, White/Blue Int. #F626



94 DODGE 3500 4X4 DUMP
Cummins Turbo Diesel, AT, A/C, PS, PB Power Seat, 34,000 Miles #D211



95 FORD F250 SUPER CAB 4x4
Power Stroke Diesel, AT-OD, A/C, Alum. Wheels, Loaded 45,000 Miles, Fact Warr. #F657



96 FORD F350 CREW CAB DUALY
Power Stroke Diesel, XLT, AT, A/C, 32,000 Miles, White, #F659



93 FORD F250 XLT HEAVY DUTY
7.3 Diesel, AT, A/C, C. T. 2-Tone Blue, 65,000 Miles. #F649



96 DODGE RAM 2500 CLUB CAB 4x4
Cummins Turbo Diesel, 5-Spd., A/C, AM/FM, 36,000 Miles, Black #D215



92 GMC 3500 EXT. CAB, DUALY 4x4
AT-OD, 454 V8, Sierra Pkg., A/C, Loaded, 61,000 Miles, White #G170



94 CHEV K3500 EXT. CAB DUALY 4x4
6.5 Turbo Diesel, AT, A/C, Country Coach Conversion, C.T. & More, Only 27,000 Miles, Red #C441



94 FORD F250 4X4 H.D.
XLT, Turbo Diesel, 5-Spd., A/C, Loaded, 50,000 Miles, Blue #F667



92 DODGE RAM 250 CLUB CAB
Cummins Turbo Diesel, 5 Spd, A/C, C.T. PW, PL, High Miles But Looks & Runs Good, Maroon/Driftwood #D217



90 FORD F250 4x4
AT, A/C, 351 V8, Cruise, 76,000 Miles, 2-Tone Brown/Gold #F668.



88 FORD F250 4x4
460 V8, AT, PS, PB, 8600 GVW, 58,000 miles, 2-Tone Blue/White



94 CHEV. 3500 H.D. 10 FT STAKE BODY DUMP
454 EFI, 5-Spd., A/C, AM/FM, PS, PB, 15,000 GVW, 43,000 Miles, White, #C442



93 FORD F250 SUPER CAB 4X4
7.3 Turbo Diesel, XLT, 5-Spd., PW, PL, C, T, Running Boards, Visor & Much More, 62,000 Miles, Red/Black, #F679



88 FORD F350 CREW CAB WESTERN HAULER
7.3 Turbo Diesel, AT-OD, XLT-Loaded, 76,000 Miles, #F653



86 FORD F350 CREW CAB 4X4
6.9 Diesel, AT, PS, PB, Cruise, 79,000 Miles, Brown/Tan. #F660