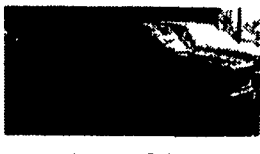




1997 FORD EXPLORER LEFTOVERS
XLT, Loaded, 10 To Choose From

With This Ad
\$100.00 Under
Factory Invoice



1995 GMC SUBURBAN SLE
4x4, 350, V8, AT, Front/Rear Air, CD/Cass, Loaded, #8099A

Was \$28,999
NOW \$25,999



1997 FORD EXPEDITION
11,500 Miles. Loaded \$38,000 New

This Can Be Yours For
\$32,499



Flatbed Gooseneck Trailers with sides & supports, both with new inspection, both in excellent condition

- 20' new brakes & tires, \$3,000
- 1988 International, New floor, brakes, and tires. Double jack stand, \$3,800

717/786-5127
Evenings, Call
717/786-5123 or 786-8550



1978 Mack RL600 with 1993 WIC 3,600 Gal. Top Fill Tank, Hydraulic Drive Pump, Floater Tires on Front, Low Hole Trans.
\$16,000 \$15,000 OBO
(717) 529-2782

Unless the Chapman Emblem is on Your Car or Truck - You Probably Paid Too Much!



LEBANON

20th & CUMBERLAND STS - RT 422 WEST

KELLER BROS.



(Buffalo Springs) Lebanon, PA

1-800-363-2767

- TRUCK HEADQUARTERS -

1992 F150 XLT S/C
4x2 AT, V8, Cruise, A/C, Tilt, Win. Locks, Etc. #7481 **\$12,995**



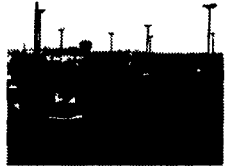
1993 FORD EXPLORER XLT
Good Condition **\$12,995**



1990 F150 S/C 4x4
AT, V8, Low Miles, Loaded #8194 **\$13,750**



1992 F150 XLT
Automatic, V8, 4x4 #2602 **\$13,475**



1993 MERCURY VILLAGER GS
Loaded, P. Seat #4471 **\$11,750**



1995 AEROSTAR
4X4 Dual A/C, Loaded, Low Miles XLT, #3717 **\$17,450**



1995 F150 4X4
5 Sp., XL Cap, #6011 **\$15,800**



1991 AEROSTAR
E.B. Dual A/C, Loaded, 4x4, Low Miles #3226 **\$11,475**



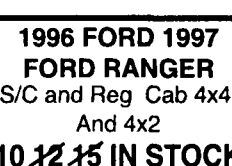
1995 WINDSTAR
Low Miles, 7 Pass, Loaded, Dual A/C **3 IN STOCK**



1994 RANGER
S/C 4x4, XLT, 5 Sp. Clean, Local Trade #0136 **\$14,450**



TAURUS and ESCORT
S.W. All Local Trades, 1988-1995 **5 IN STOCK**
Starting At **\$2,595**



1995 BRONCO XLT
4x4, 5.8L Loaded, Automatic, T.Tow #2685 **JUST TRADED**



1998 FORD E250 H.D. CARGO VAN
5.4 L, AT, Work Bin



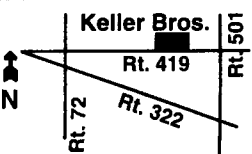
1997 F350 CREW CAB 4x4, XL and XLT **3 IN STOCK**



1996 FORD 1997 FORD RANGER
S/C and Reg Cab 4x4, And 4x2 **10, 12, 15 IN STOCK**



1994 EXPLORERS
XLT and E.B. 4 Door, Loaded **4 IN STOCK**



KELLER BROS. FORD HAS SERVED CENTRAL PENNA. AREA FOR MORE THAN 75 YEARS.

Mon.-Fri. 9-9; Sat. 9-4
Most Used Inventory Has A 12 Mo. or 12,000 Mile Limited Warranty



1995 Ford Hot Shot
FD 1060 Cummins 190 hp, 5 Sp., P/S, A/C, AM/FM Cassette, Deluxe Interior, 189" WB Rockwell rear, 21,440 GVW, 109,000 Miles



1973-75 Mack Cement Mixers
10+11 Yard Barrels, 6 Spd., + 13 Spds., 44+ 55,000 Lb. Rears, All Runs Excellent Asking **\$8,500**



1979 Crane Carrier Cement Mixer
10 Yd. Rex Mixer, 230 Cummins, 8 Spd. Trans., 44,000 Lb. Rears, Asking **\$8,500**

1993 Toyota Pickup
4 Cyl., 5 Spd. Trans., AM-FM Radio, A/C, Excellent Condition, High Mileage

Wm. Cohen & Sons
(610) 269-1298

McNAMARA SUBARU

Limerick, PA
1 (800) 753-3123

DIESEL LAND

USED TRUCKS & CARS

- 1996 Chevrolet Blazer, LT pkg. 6.5 Turbo Diesel, 4x4, Blue w/ Gold Belt Line, Leather, All Factory Options **\$27,900**
- 1995 Chevrolet 2500 Club Cab, 350 V8, 4x4, Auto, Silverado Pkg., Emerald Green, w/ Sandstone, 50,000 Miles **Nice Truck**
- 1993 Ford F250 Super Cab, 4x4, XLT Pkg., 7.3 Diesel, Auto, Air, Bucket Seats, Matching Cap **\$19,495**
- 1993 Dodge 3500 Club Cab, dually 4x4, Cummins turbo diesel, LE pkg., Lowered, Balance of Factory Warranty **\$19,900**
- 1987 Dodge Ram Charger, 4x4, auto, air, power equipment, 90 V8 **\$5,495**
- 1987 Ford F250, 4x4, super cab, XLT pkg., 351 V8, 87,000 miles, just a little cosmetic challenge, but not bad, a lot of truck for **\$7,495**
- 1986 Ford F250 Super Cab., 4x4, XLT, Lariat, 6.9 Diesel, 1 Owner, Well Serviced, Complete Service History, New Head Gasket **\$11,900**

REWARD: Cash paid for any diesel 4x4
Before you trade, call me about your truck.
Ask For Dennis McNamara, 1 (800) 753-3123

Largest Stocking & Selling Extended Cab GMC Dealer in 7 States

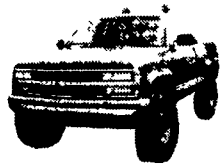
PONTIAC
HONDA
GMC
TRUCK

1335 Manheim Pike, Lancaster

Prices based on straight sale, tax & tags extra. Trades accepted at actual cash value. Must present this ad at time of purchase for sale price.

JONES

717-394-0711



'93 CHEV K15 4x4
5 Spd., 350, AC, Silverado #7611 Was \$18,400
SALE \$15,819



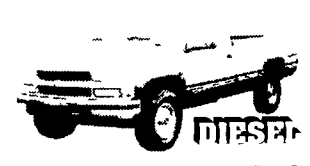
'95 GMC SONOMA XCAB 4X4
AC, V6, 5 SPD., SLS, #7619, WAS \$17,400
SALE \$15,800



'91 CHEV 4x4 SUBURBAN DIESEL
Silverado, AT, AC, 8 Pass, #7574 Was \$16,800
SALE \$13,770



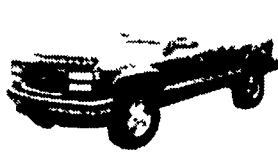
'95 CHEV K25 XCAB 4X4
AT, AC, 350 Silverado, 8600 GVW, 36,000 Miles #7555 Was \$24,877
SALE \$22,800



'95 CHEV K25 4x4
AT, Silverado, AC, 6.5 Turbo, #7529 Was \$23,800
SALE \$21,735



'94 CHEV K15 XCAB 4x4
350, AT, AC, Silverado, 40,000 Miles #7534 Was \$20,800
SALE \$19,635



'95 GMC K15 4x4
5 Spd, Z71, 350, SLE #7583 Was \$20,700
SALE \$18,800



'94 CHEV S10 BLAZER 4x4
4 Dr., AT, AC, V6 #7607 Was \$13,400
SALE \$10,900



94 CHEVY SUBURBAN 4x4
AT, AC, 350, Silverado, 8 Pass., #7604, Was \$22,750
SALE \$20,850



'94 CHEV 3/4 XCAB 4X4
AT, AC, 350, Cheyenne #7545, Was \$18,900
SALE \$16,815