

**MERCER LIVESTOCK AUCTION
MERCER, PA**

October 28, 1997

CATTLE 513...[PDA]...steers .50 higher, cows .50 to 2.50 lower.
STEERS: Choice 990/1450 lbs. 64.00-67.75, one @ 69.25, Select 56.50-63.75, Standard 47.50-56.00.
HOLSTEINS: few High Choice and Prime 1395/1650 lbs. 61.00-65.00, few Choice 1100/1490 lbs. 58.75-61.00, few Select 51.00-54.25, Standard 36.50-48.00.
HEIFERS: few High Choice and Prime 1155/1275 lbs. 66.50-67.50, few Choice 1050/1175 lbs. 62.50-65.00, few Select 58.50-61.00, few Standard 46.00-52.50.
COWS: Breaking Utility and Commercial 33.00-38.25, few 40.00, Cutter and Boning Utility 27.50-35.50, Canner and Low Cutter 24.50-29.25. Shells down to 21.50.
BULLS: few Yield Grade No. 1 1120/2140 lbs. 39.50-45.00, No. 2 940/1950 lbs. 27.25-38.75.
FEEDER CATTLE: STEERS: few Large Frame No. 1 530/910 lbs. 56.00-60.00, Medium Frame No. 1 330/960 lbs. 51.00-61.00, Large Frame No. 2 225/1020 lbs. 43.50-54.00, Medium Frame No. 2 265/845 lbs. 42.00-49.00; **HEIFERS:** few Large Frame No. 1 425/720 lbs. 53.00-64.00, Medium Frame No. 1 230/835 lbs. 42.00-49.00, Large Frame No. 2 285/720 lbs. 53.00-64.00, Medium Frame No. 1 230/835 lbs. 46.00-60.00; **BULLS:** few Large Frame No. 1 735/950 lbs. 45.50-48.5 36.00-43.00, Medium Frame No. 2 250/715 lbs. 41.00-49.00.
CALVES 107...VEALERS: Standard and Good 75/140 lbs. 16.00-32.00, Utility 55/85 lbs. 5.00-16.00.
FARM CALVES: few No. 1 Holstein bulls 120/140 lbs. 62.50-90.00, 90/115 lbs. 80.00-96.00, one @ 100.00, No. 2 91/145 lbs. 32.50-82.50; one No. 1 Holstein heifer 100 lbs. @ 100.00, few No. 2 85/100 lbs. 30.00-60.00. Few beef cross bulls and heifers 80/115 lbs. 30.00-65.00.
HOGS 32...BARROWS AND GILTS: US 1-3 250/265 lbs. 47.00-48.75.
SOWS: few US 1-3 305/525 lbs. 38.50-42.50.
FEEDER PIGS 0...NO MARKET TEST!
SHEEP 0...NO MARKET TEST!
GOATS 1...One Medium Nanny @ 25.00. — per head.

**October 31, 1997
PA DEPT. OF AGRICULTURE
14 LIVESTOCK AUCTIONS**

CATTLE 6562...Compared with 5804 head last week and 4122 head a year ago. Compared with last Friday's summary...slaughter steers uneven, mostly steady to 1.00 higher, sl. heifers steady to 2.00 higher, sl. cows & bulls 1.00 to 3.00 lower...
SLAUGHTER STEERS: High Choice & Prime 67.50-70.75, Choice 64.00-68.00, Select and Low Choice 60.00-65.50, Select 55.00-64.50, Standard 47.00-56.00.
HOLSTEINS: High Choice & Prime 57.75-61.00, few to 63.25, Choice 54.50-59.00, Select 48.00-55.00, Standard 43.50-50.00.
HEIFERS: Choice 62.00-65.50, Select 53.00-63.00, Standard 40.00-52.50, few to 33.50.
COWS: Breaking Utility & Commercial 33.00-40.00, few to 42.00, Cutter & Boning Utility 27.00-35.00, Canner and Low Cutter 24.00-31.00, few to 22.00. Shells down to 15.00.
BULLS: Yield Grade No. 1 1000/2400 lbs. 37.00-45.00, few to 48.00, No. 2 900/2000 lbs. 32.00-40.00.
FEEDER CATTLE: STEERS: Medium & Large Frame No. 1 300/600 lbs. 60.00-76.00, 600/850 lbs. 55.00-71.00, Medium & Large Frame No. 2 300/825 lbs. 45.00-60.00, Large Frame No. 2 275/600 lbs. 44.00-58.50; **HEIFERS:** Medium & Large Frame No. 1 300/800 lbs. 38.00-54.00, few 30.00, Medium & Large Frame No. 2 300/800 lbs. 38.00-54.00, few to 30.00; **BULLS:** Medium & Large Frame No. 1 300/850 lbs. 54.00-73.00, few 45.00, Medium & Large Frame No. 2 275/850 lbs. 40.00-59.00, few to 26.00.
CALVES 3316...Compared with 3649 head last week and 2717 head a year ago. **VEALERS:** mostly steady...few Choice 150/350 lbs. 65.00-85.00, Good 125/300 lbs. 40.00-58.00, Standard and Good 70/110 lbs. 19.00-34.00, Utility 50/100 lbs. 5.00-23.00.
FARM CALVES: Holstein bull calves steady to 10.00 higher, Holstein heifers unevenly steady to weak...No. 1 Holstein bulls 90/125 lbs. 60.00-120.00, 75/90 lbs. 45.00-75.00, No. 2 75/125 lbs. 40.00-75.00, few to 30.00; No. 1 Holstein heifers 85/125 lbs. 80.00-115.00, few 135.00, No. 2 75/125 lbs.

30.00-80.00. Beef cross bulls and heifers 75/135 lbs. 30.00-80.00.
HOGS 2538...Compared with 2429 head last week and 2872 head a year ago. Barrows and gilts fully steady to weak, sows steady...
BARROWS AND GILTS: US 1-2 220/265 lbs. 45.00-48.75, mostly 46.00-47.50, US 1-3 210/270 lbs. 44.50-46.50, few US 2-3 220/300 lbs. 40.00-44.75. **SOWS:** US 1-3 300/500 lbs. 31.00-37.00, 500/700 lbs. 35.00-39.50, few to 42.00. **BOARS:** 28.50-34.50.
FEEDER PIGS 378...Compared with 273 head last week and 488 head a year ago. Feeder pigs...US 1-3 20/35 lbs. 13.00-30.00, 30/60 lbs. 21.00-34.00. — per head.
SHEEP 1154...Compared with 1436 head last week and 1254 head a year ago. Slaughter lambs steady to 20.00 higher...
SLAUGHTER LAMBS: Choice 40/60 lbs. 105.00-160.00, 60/85 lbs. 90.00-120.00, 80/100 lbs. 70.00-115.00, 100/135 lbs. 65.00-107.00.
SLAUGHTER SHEEP: 25.00-51.00.
TWO GRADED FEEDER PIG SALES 1662...Compared with 784 head last week and 1151 head a year ago. Feeder pigs uneven, under 50 lbs. steady to 5.00 lower, over 50 lbs. strong to 5.00 higher...US 1-2 25/40 lbs. 82.00-106.00, 40/50 lbs. 80.00-97.00, few to 66.00, 50/60 lbs. 60.00-87.00, 60/70 lbs. 60.00-75.00, 70/80 lbs. 60.00-87.00, 80/90 lbs. 64.00-76.00, US 2-3 45/60 lbs. 45.00, Slaughter 22/24 lbs. 115.00-155.00. --- per hundredweight.

**NEW WILMINGTON
LIVESTOCK AUCTION
NEW WILMINGTON, PA
November 3, 1997**

CATTLE 210...[PDA]...Compared with last week's sale...cows 1.75 to 5.00 lower.
STEERS: few Standard 53.00-53.75.
HOLSTEINS: couple Standard 45.75 & 47.75.
COWS: Breaking Utility and Commercial 29.00-34.00, couple 36.00, Cutter and Boning Utility 23.50-30.50, Canner and Low Cutter 21.50-25.50. Shells down to 19.50.
BULLS: one Yield Grade No. 1 1930 lbs. 40.75, few No. 2 1305/2110 lbs. 29.75-36.25.
FEEDER CATTLE: STEERS: Medium Frame No. 1 465/825 lbs. 58.00-61.00,

Lancaster Farming, Saturday, November 8, 1997-A17

HEIFERS: Medium & Large Frame No. 1 300/795 lbs. 40.00-52.00, few Medium Frame No. 2 535/595 lbs. 30.00-35.00; **BULLS:** Large & Medium Frame No. 1 325/765 lbs. 40.50-50.50.
CALVES 147...VEALERS: Standard and Good 75/140 lbs. 24.00-34.00, Utility 50/70 lbs. 5.00-23.00.
FARM CALVES: No. 1 Holstein bulls 95/120 lbs. 84.00-99.00, 90 lbs. @ 74.00, 80/85 lbs. @ 30.00, No. 2 90/115 lbs. 60.00-80.00; few No. 1 Holstein heifers 90/100 lbs. 132.50-170.00, few No. 2 80/140 lbs. 45.00-125.00. Beef cross bulls and heifers 80/190 lbs. 45.00-105.00.
HOGS 210...Barrows and gilts 1.00 to 2.50 lower.
BARROWS AND GILTS: US 1-2 215/250 lbs. 45.00-46.25, few 48.75, US 1-3 220/250 lbs. 43.60-44.75, few US 2-3 250/240 lbs. 43.00.
SOWS: US 1-3 335/645 lbs. 33.25-39.50, one @ 44.25, few Medium 235/335 lbs. 25.00-35.00.
BOARS: few 250/405 lbs. 26.00-32.75.
FEEDER PIGS 47...US 1-3 25/85 lbs. 27.50-40.00, few 125/165 lbs. 42.00-50.00. — per head.
SHEEP 96...SLAUGHTER LAMBS: High Choice and Prime 60/120 lbs. 87.50-93.00, Choice 65/110 lbs. 67.50-85.00.
SLAUGHTER SHEEP: 15.00-40.00.
GOATS 2...One Medium @ 20.00, one Large Nanny @ 43.00. — per head.
OF AGRICULTURE

Good 80/125 lbs. 22.00-29.00, Utility 60/85 lbs. 11.00-21.00.
FARM CALVES: Farm calves uneven, 5.00 higher to 10.00 lower...No. 1 Holstein bulls 90/125 lbs. 70.00-98.00, few late sales @ 60.00, No. 2 85/115 lbs. 30.00-57.00; few No. 1 Holstein heifers 105/110 lbs. 30.00-57.00; No. 2 80/105 lbs. 30.00-47.50. Few beef cross bulls and heifers 75/140 lbs. 24.00-50.00.
HOGS 14...BARROWS AND GILTS: few US 1-3 220/310 lbs. 40.00-43.25.
SOWS: couple US 1-3 515 & 540 lbs. 36.25 & 38.00.
BOARS: couple 455 & 710 lbs. 25.00 & 27.25.
FEEDER PIGS 92...US 1-3 15/30 lbs. 16.00-22.00, 30/50 lbs. 23.00-36.00. — per head.
SHEEP 6...SLAUGHTER LAMBS: few Choice 70/80 lbs. 86.00-96.00.
SLAUGHTER SHEEP: few 27.00-38.00.
GOATS 38...Few Medium Billies 44.00-47.00, Large Nannies 55.00-69.00, few Medium 44.00-47.00, Large Kids 33.00-47.00, Small Kids 2.00-12.00. — per head.
HOLSTEIN DAIRY COWS \$475.00-\$1100.00, one @ \$1325.00. — per head.

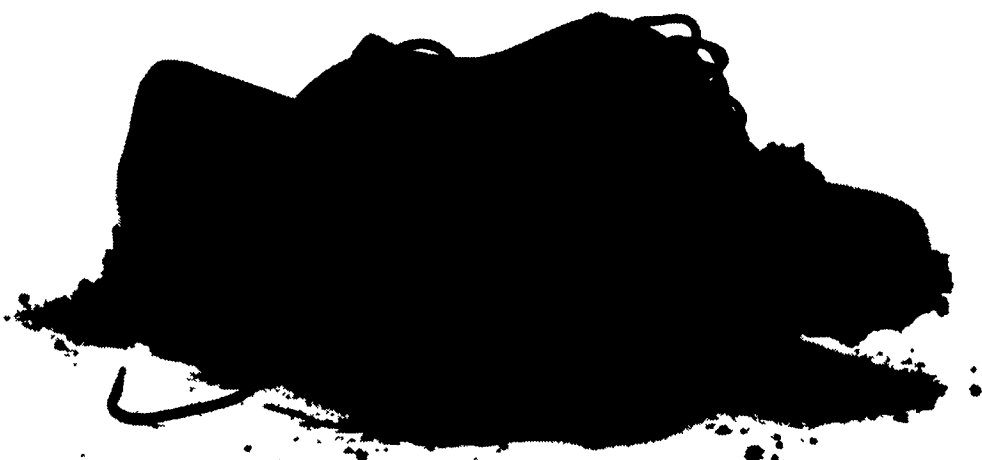
**North Jersey
Livestock**

**Hackettstown, NJ
Report Supplied by Auction
Tuesday, November 4, 1997**

CALVES .05-1.15.
COWS .15-.39.
EASY COWS .02-29%.
FEEDERS 300-600 LBS. .13-.68.
HEIFERS .16-.51.
BULLS .24-.46%.
STEERS .15-.66%.
HOGS .02-.39.
ROASTING PIGS EACH .50-15.00.
BOARS .25-.30.
SOWS .24-.33.
SHEEP .25-.76.
LAMBS EACH 22.00-48.00.
LAMBS PER LB. .58-1.41.
GOATS EACH 26.00-115.00.
KIDS EACH 5.00-79.00.
HIDES EACH 6.00.
TOTAL: 1109.



**Out standing
in your field.**



The Agri-specialists from Farmers First aren't a bunch of deskbound bankers waiting around for the phone to ring. We get involved with you. Right where you live and work. We lend the money farmers need to keep growing. And, we can help your business in a lot of other ways, too.

We talk the talk. And we walk the walk.
(wherever that might lead us)



ANDY TERRELL
(717) 626-4735
EXT. 264

The Agri-specialists

**FARMERS
FIRST BANK**

A SUSQUEHANNA BANC

Member FDIC



JAY HERSHEY
(717) 768-8256

**Introducing The
New Polaris ATV's...**



Xplorer
400L

Scrambler
4 x 4

**And The
Newest
Dealer
Who
Sells
Them.**

We couldn't find a better ATV to handle, and neither will you. Just turn the key, push the throttle and go.

You don't have to do the shifting because it's automatic with the Polaris Variable Transmission (PVT). You can stop with just one hand, thanks to a hydraulic braking system that slows all wheels evenly. And the Polaris ATV's can turn on a dime.

One should fit you just right, like the new Xplorer 400L or the liquid-cooled Scrambler 4 x 4. Now that we have them all, maybe you should have one.

POLARIS Believe it.



1528 Main Street • Whiteford, MD 21160
410-452-8212 • 410-836-1924

Polaris ATV's may not be ridden by anyone under 18, and all riders should take a safety course. For safety and training information, see your dealer or call 1-800-342-3764. ATV's can be hazardous to operate. For your safety, always wear a helmet, eye protection, protective clothing and never carry passengers. © 1997 Polaris Industries Inc.