

1a CONSTRUCTION EQUIPMENT

10KW Generator, 5 hrs since new, \$2500; Portable light & generator system, cost \$15,000, take \$8000, like new. 717/762-7940.

10' snow plow w/frame and electric hydraulic pump, \$1,800 OBO. (215)654-9237.

1983 Case580E Backhoe, good tires, has plumbing for breaker, \$13,500. (717)274-3305

1987 Kenworth rollback, 24' bed, Cummins diesel, 140,000 miles; MM maintenance grader, 7 1/2' power angle blade, close cab; JD 350 crawler loader, 4-in-1 bucket. 717/726-6641.

1988 CAT Excavator, excellent condition, low hours, 205 model, asking \$42,000 OBO. (610)273-2946

1988 Fiat Allis FD-7 bulldozer, 6-way blade, ROPS, new paint, 50% UC, excellent condition, \$24,000. 610/932-5270.

1989 Commercail series, 18', w/beavertail, 3-axle, 18,000 GVW, new floor, tires, \$3600. 717-354-0887

250 IHC track loader for parts. Drott loader, real good, 8', 4 in 1 bucket, no tracks. 302-735-8748 between 8-9am

(2) Ready Heaters, one 250,000 BTU, one 73,000 BTU. Like new condition, \$75 each. 717/354-5310.

'86 JD 850 utility tractor, 4WD, 3 cyl diesel, 1,800 hours, front loader, barb loaded tires and weights, turn key machine, very reliable, \$8,500 negotiable. (717)333-4134.

8' snow plow blade, \$300 OBO. (215)654-9237.

'94 CAT+ JCB backhoes, 4WD must sell! Offers! Bobcat+ chipper. (302)998-9563.

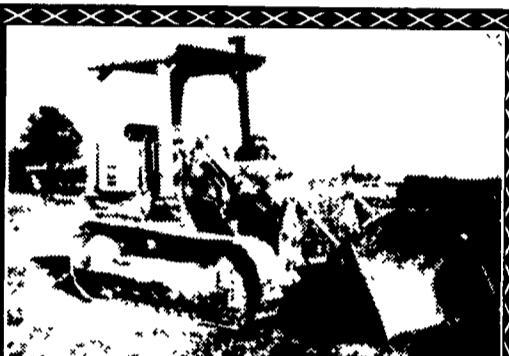
2000 lb. Yale forklift, 4 cyl. gas, 36" forks, solid tires.

Wm. Cohen & Sons
(610) 269-1298
between 7 am - 4:30 pm



John Deere JD544A Wheel Loader
\$15,000

Heavy Equipment Loader Parts, Inc.
10070 Allentown Blvd., Grantville, PA 17028
(717) 469-0039 (800) 446-0505

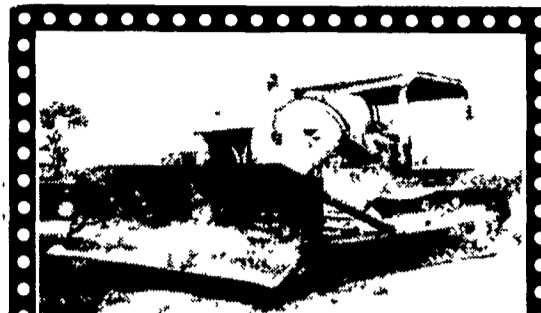


Caterpillar 951B/C Crawler Loaders
From \$13,500 & Up

Heavy Equipment Loader Parts, Inc.
10070 Allentown Blvd., Grantville, PA 17028
(717) 469-0039 (800) 446-0505

688 Generator
S/N 274306
Bucket, Stick, 3000 Lb., Condition
\$2,000
683-5970

688 Generator
S/N 274306
Bucket, Stick, 3000 Lb., Condition
\$2,000
683-5970



International TD25 power shift, runs & Operates, needs TLC \$4,500 OBO
610-944-9871 after 6 p.m.

Forklifts
New and reconditioned
For Sale or Rent
Heavy duty fork
extensions Call For Prices
Don't trade or throw out that old engine. Have it overhauled for a fraction of the cost of new! All work is guaranteed.

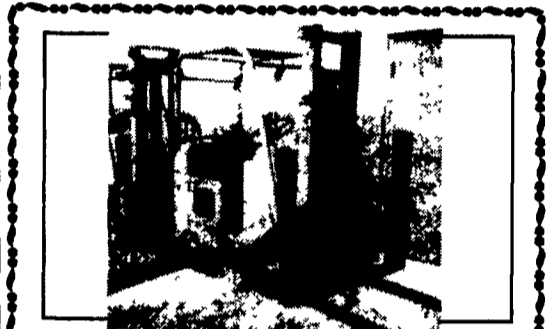
For Sale
4000# Mitsubishi, 1986, Triple Mast
6000# Clark Pneumatic Tires
5000# Komatsu Pneumatic Tires
Masts for back of tractors
TOTALLY Reconditioned 4000# Yale 1990

SAM'S MECHANICAL SERVICE
SAM STOLTZFUS
39 Colonial Rd., Gordonville, PA
For Service Calls 717-768-7492

1985 Ford F-250, turbo diesel, 4WD, dual tanks
1990 W350 Dodge 3 ton dump truck, 4WD, Cummins turbo diesel w/Meyers 8 1/2' plow
1989 1845B Case skid loader, 2 buckets, pallet forks, 8 wheels, new tires, 1300 hrs.
1994 Eagle tri-axle trailer
2 way hoist w/beams
300 gal. diesel fuel tank w/elec. pump
Hyd. test set
David White LT8-300 transit
All in good shape!
717/243-0409



1984 Lull 844 Forklift
w/JD Diesel, New paint, good rubber
\$27,500 - Financing available
ALLEN WEAVER
717/529-2512 No Sunday Calls



2-Towmotor Forklifts For Sale
4 Cyl Flat Head Gasoline, 2000 Lb Capacity, 36" Forks, Solid Tires Asking \$1,500 Each
Wm. Cohen & Sons
(610)269-1298

We Now Accept Visa & Master Card

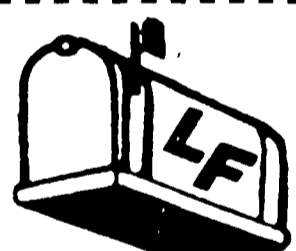
(Word Ads Only)

CLASSIFIED AD ORDER BLANK

PLEASE WRITE CLEARLY

MAIL TO:
LANCASTER FARMING
P.O. Box 609, Ephrata, PA 17522

PLEASE CALL OUR CLASSIFIED AD DEPT. IF YOU WANT TO ADVERTISE A DISPLAY BOX IN OUR PAPER



NOTE: Please do not use this form for Mail Box Market Ads, see instructions with Mailbox Markets.

Name _____
Address _____
City _____ State _____
Zip _____ Phone() _____
Please publish my _____ word ad _____ times starting with the _____ issue. Classify under # _____ . I enclose _____.

Check Enclosed
 Visa (13 or 16 numbers)
 Mastercard (16 numbers) (Be sure to include all numbers)
Card # _____
Exp. Date: _____ Signature _____

CLASSIFIED ADVERTISING RATES
47¢ per word per week - 1 or 2 times
42¢ per word per week - 3 or more times
11 word minimum

Words	1 Time	2 Times	3 Times
up to 11	5.17	10.34	13.86
12	5.64	11.28	15.12
13	6.11	12.22	16.38
14	6.58	13.16	17.64
15	7.05	14.10	18.90
16	7.52	15.04	20.16
17	7.99	15.98	21.42
18	8.46	16.92	22.68
19	8.93	17.86	23.94
20	9.40	18.80	25.20

DEADLINES:
SECTION D - WEDNESDAY AT 5:00 P.M.
SECTION C - THURSDAY AT 9:00 A.M.
OF EACH WEEK'S PUBLICATION

1	2	3	4	5
6	7	8	9	10
11	12	13	14	15
16	17	18	19	20
21	22	23	24	25
26	27	28	29	30
31	32	33	34	35
36	37	38	39	40

(PHONE NUMBERS COUNT AS ONE WORD)

- Lancaster Farming
1 E. Main St.
Ephrata, Pa 17522
717-394-3047
or Litz
717-626-1164
FAX 717-733-6058
PHONE HOURS:
Mon., Tues.,
Wed. & Fri.
8 a.m. to 5 p.m.
Thurs.
7 a.m. to 5 p.m.
OFFICE HOURS:
Mon. thru Fri.
8 a.m. to 5 p.m.
The following categories are available for your classified advertising in Section C Deadline Thursday morning at 9 of each week's publication
- 1-Farm Equipment
2-Farm Eq. Wanted
- The following categories are available for your classified advertising in Section D Deadline Wednesday afternoon at 5 of each week's publication
- 1a-Construction Equipment
3-Silos and Unloaders
4-Building and Supplies
5-Grain Equipment
6-Dairy Equipment
7-Livestock Equipment
8-Cattle
8a-Exotic Animals
9-Horses & Mules
10-Sheep & Goats
11-Swine
12-Artificial Breeding
13-Hog Eq. & Supplies
14-Poultry & Supplies
14a-Flatfies
15-Feed & Seed
16-Fertilizer
17-Plants
18-Fruits & Vegetables
19-Nursery
20-Lawn & Garden
21-Services Offered
22-Custom Work
23-Help Wanted
24-Situations Wanted
25-Business Opportunities
26-Household
27-Pets
28-Lost
29-Found
30-Computers
31-Notice
32-Miscellaneous
32a-Antiques
33-Recreational Vehicles
34-Autos
35-Trucks & Trailers
36-Real Estate