

You Ask, You Answer

(Continued from Page B14)

QUESTION — A reader from Honesdale would like directions on making a life-size doll that is placed in the back of a car to look like a person sitting there.

QUESTION — Wayne Urffer, Maple Shade, N.J., has a 1964 Yamaha 125cc motorcycle that needs restoration. Is there a vocation-technical school willing to take it on? It will probably need some welding, bodywork, paint, and an engine overhaul. Is there a high school vocational-technical school willing to tackle the project. Urffer is not looking for a free ride, but he remembers when he was a vocational student they sometimes lacked for work, which didn't help the students learn.

QUESTION — Wayne Urffer, Maple Shade, has a Wheeler & Wilson treadle sewing machine that is about 100 years old. He needs a source of information such as a book, newsletter or collector's organization for help in reconditioning and using the machine.

QUESTION — Parts and a repair person are needed for a Blackhawk floor jack model S-4 Serial #502001. Write to Dan Kulp, P.O. Box 460, Kimberton, PA 19442.

QUESTION — Steve Gregor recently built a 3-stall horse barn. He wants to know what to use for the box stall floor. He needs approximately 6-inches of fill to have the proper floor level. What material is needed to make up the 6-inches needed?

QUESTION — Tanner Lindstrom of Slate Hill, NY, would like to know where to purchase reasonably priced Rhodesian Ridgeback dogs for her children's birthday presents.

QUESTION — A reader wants to know what kind of a truck would fit a bed liner that measures 6' long x 54" wide, with only 8 inches from front of bed to the wheel wells, which are 36-inches long.

QUESTION — George Musser Jr., Louisa, wants information on a tiller made by George Garden Tools, Division of Community Industries Assoc. of Sullivan. The tiller has a 5 hp motor, cast iron drive with wheel followed by three cultivator teeth, much like a horsedrawn sideswope.

QUESTION — Anne Kavaliavskas, Dalton, wants to find a kit plus O ring for Laing Model SM 202-BTW Serial #468-151751 water circulator for a coal stove. She knows that this model has been discontinued.

QUESTION — Madeline VanLeuven, Mantua, N.J., writes that she and her husband purchased a bell while visiting Lancaster County. The bell did not have a cradle bracket. The bell is between 4½ - to 4¾ -inches at the bottom. Does anyone know where a cradle bracket may be obtained?

ANSWER — Thanks to Elaine W. Good, Lititz, and her mother, Lydia Hurst Wenger of Landis Homes, for answering Hershey Kurtz's request. Elaine said that her mother and she pulled the words from the recesses of their memories and aren't sure if the words are complete. They do not know the author or composer.

*"On the old farmhouse veranda
There sat Silas and Miranda
Thinking of the days gone by.
Said he, "Dearie, don't be weary.
You were always bright and cheery,
But a tear, dear, dims your eye."*

*Said she, "They're tears of gladness,
Silas, they're not tears of sadness,
For tis, 50 years today since we were wed,"
Then his firm, old heart grew lighter,
And his face became much brighter,
As he turned to her and said,*

*"Put on your old gray bonnet
With the blue ribbons on it
While I hitch old Dobbin to the shay.
Through the fields of clover
We will ride to Dover,
On our Golden Wedding Day!"*

ANSWER — A reader from Central wanted to know how to care for philodendron-type houseplants so that the leaves don't turn yellow and fall off, leaving only a long, ugly bare stem. Turn to the column "All Gardens Great and Small," in this section for a complete answer.

ANSWER — Evelyn Snooks, Leesburg, Va., wanted information on how to obtain patterns for embroidery. Thanks to Caroline Baxter, who writes that embroidery patterns are available from A.C. Moore Craft Stores, which also sells stamped pillow cases, dresser scraves, and tablecloths.

ANSWER — Cindy Eshleman of Jonestown wanted to know where to buy horse patches of different breeds that can be sewn on jackets. Thanks to Donna Fite, Lancaster, who writes that the patches can be ordered through the catalog "The Horse Lovers Gift Guide," 3011 Trickum Rd., Woodstock, GA 30188-1821. Phone 1-800-767-1452.

ANSWER — For Bernie Petry, who wanted to buy large lots of garden bulbs. Henry Schwenk, East Hampton, N.Y. recommends K. Van Bourgon Dien and Sons, 245 Route 109, P.O. Box 1000, Babylon, N.Y. 11702-9004. Customer service 1-800-552-9916.

ANSWER — Someone from Purple Martin Conservation of Edinboro University of Pa. sent in these instructions for making bird houses from gourds. For more information, contact the Conservation Association at Edinboro University of Pa., Edinboro, PA 16444.

Harvesting and curing gourds: Because they require a long growing season, gourds should be left in the garden as long as there is life left in the vine. Frost may discolor the gourds but will not harm them. Some growers think that leaving them out all winter improves them for craft work. They can be hung on a line or in a tree. If picking gourds, only take those with stems that have browned or shriveled. If the stem is green and healthy, the gourd can continue to grow until frost. Cut the gourd from the vine, leaving at least 2 inches or more of the stem. Wash the gourd with a solution of bleach or Lysol and water and dry it well. Gourds need 3 to 6 months to dry. The most important factor in curing gourds is time. If the gourd wrinkles or gets soft, it should be discarded. When completely dry, gourds will be a brown color, often mottled from mold and the seeds will rattle. Once well cured, clean the gourd by placing in hot water for a few minutes, then scraping off the outer film and skin. If any cutting is to be done, it is easier to cut

(Turn to Page B17)

LONG DISTANCE PHONE SERVICE ONLY 7.9 cents a minute for interstate calls to anywhere within USA anytime

- NO Access Codes
- NO Prepayment
- NO Monthly Fees
- NO Minimum Usage
- NO Term Contract
- Quality Service by Major Carriers
- For Business & Residence use
- 6 sec. Increment Billing after 1st min.
- Account Codes with individual billing for community phones

FREE Cellular Phone Never Pay for Airtime

NO prepayment, NO term contract, NO security deposit
NO credit check, NO monthly bill. Small Application fee

Pre-Paid Phone Cards only 15.9 c/min. NO surcharge

For more information on the above items, call 800-779-7729

Part time or full time sales people wanted.
Inquire about the \$50,000 annual income plan
Customers can earn an income with our referral plan

Would You Like To Lose Weight While You Sleep?



May Assist Body In:

- Toning Muscle •
- Gaining Energy •
- Better Sleep •

Ginny Fuller, Owner of Slender You Lost
36 Lbs. So Far!

Slender You Of Leola



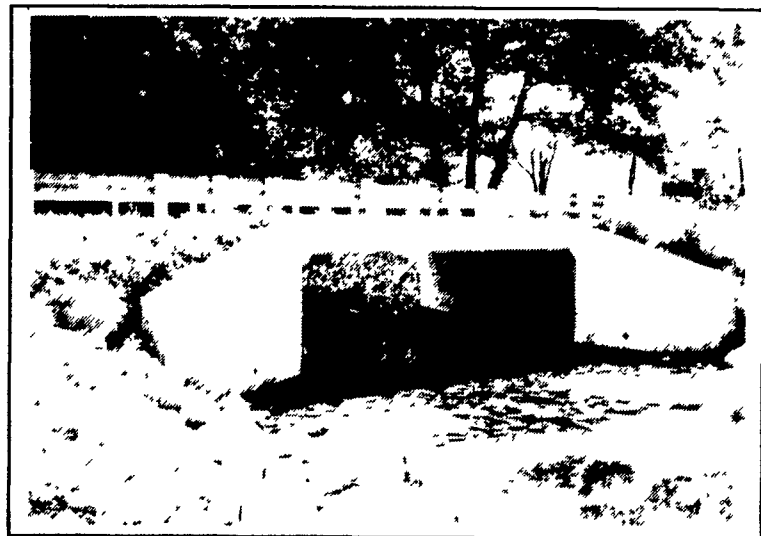
93 W. Main St., Leola, PA 17546



Ind. Assoc.

717-656-6408 or 1-800-237-0400 For Fast Delivery

• Agricultural • Commercial • Residential

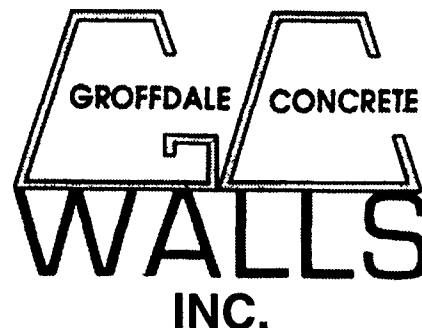


We do box culverts and wing walls
to match your specifications

- Retaining Walls • Bunker Silos
- Manure Storage, Etc.

GET OUR EXPERIENCE WORK FOR YOU ESTABLISHED SINCE 1979!

We Work Hard For Customer Satisfaction!



430 Concrete Ave., Leola, PA
717-656-2016

Sizes And Layouts To Your Specifications