

Hatfield Direct

Hatfield, Pa.
 Reports Supplied by Packer
 For Monday, October 27, 1997
 And Wednesday, October 29, 1997
 LAST MONDAY: 6600
 TODAY: 6655.
 TREND: COMPARED TO LAST
 MONDAY .08 LOWER.
 55.4% 215-275 LBS. 47.67.
 56.4% 215-275 LBS. 48.74.
 57.4 215-275 LBS. 49.81.
 58.4% 215-275 LBS. 50.88.
 59.4% 215-275 LBS. 51.95.
 PREMIUM VALUE: 1.44.
 GOOD'S RECEIVING
 MONDAY: 46.50.

WEDNESDAY
 TOTAL HOGS: 7064
 LAST WEEK: 7100
 TREND: COMPARED TO LAST WED-
 NESDAY: .42 LOWER.
 55.4% 215-275 LBS.: BASE: 46.75.
 56.4% 215-275 LBS.: 47.84.
 57.4% 215-275 LBS.: 48.93.
 58.4% 215-275 LBS. 50.02.
 59.4% 215-275 LBS. 51.11.
 PREMIUM VALUE 1.46.

**S & J Villari
 Livestock
 Feeder Pig Sale**

Millsboro, Del.
 Sept. 27, 1997
 Report Supplied by Auction
 331 HEAD.
 UNDER 30 LBS. 50.00-90.00; 30-39
 LBS. 70.00-100.00; 40-49 LBS.
 70.00-77.00; 50-59 LBS. 74.00-80.00;
 60-69 LBS. 65.00.

**New Holland
 Hogs**

NEW HOLLAND, PA
 MON OCTOBER 27, 1997
 USDA Market News
 NEW HOLLAND HOG AUCTION
 HOG RECEIPTS TODAY 859 LAST
 MONDAY 922 LAST YEAR 1130
 BARROWS AND GILTS: Compared to
 last Monday steady, instances 50 lower.
 US 1-2 210-270 lbs 46.50-47.00
 US 1 210-270 lbs 47.50-48.50
 US 1-3 220-270 lbs 44.75-46.00
 170-205 lbs 42.60-45.00
 US 2-3 220-285 lbs 44.00-44.75

**State Graded
 Feeder Pig Sale**

Carlisle Livestock Market, Inc.
 Friday, Oct. 24, 1997
 RESULTS ON 1001 PIGS.
 COMPARED TO OCT. 10 STATE
 GRADED SALE, PIGS UNDER 60 LBS.
 WERE STRONG TO 10.00 HIGHER
 WHILE OVER 60 LBS. WERE FIRM.
 ALL PIGS ARE FROM QUALIFIED OR
 MONITORED HERDS; THEY WERE
 WEIGHED ON ARRIVAL AND SOLD
 BY THE HUNDREDWEIGHT.
 US#1&2: 827 HEAD. 24 HEAD 34-39
 LBS. 105.00; 131 HEAD 41-50 LBS.
 85.00-97.00; 377 HEAD 51-59 LBS.
 80.00-87.00; 183 HEAD 61-69 LBS.
 70.00-75.00; 44 HEAD 70-79 LBS.
 68.00-87.00; 68 HEAD 81-88 LBS.
 66.00-76.00.
 US#2: 116 HEAD. 7 HEAD 28-29 LBS.
 82.00; 16 HEAD 42-49 LBS. 66.00; 51
 HEAD 50-59 LBS. 60.00; 11 HEAD 65-69
 LBS. 60.00; 27 HEAD 70-79 LBS.
 60.00-62.00; 1 HEAD 80 LBS. 64.00; 3
 HEAD 95 LBS. 71.00.
 US#2&3: 33 HEAD. 16 HEAD 45-49
 LBS. 45.00; 16 HEAD 50-59 LBS. 45.00; 1
 HEAD 60-69 LBS. 54.00.
 AS IS: 25 HEAD. 1 HEAD 30-39 LBS.
 50.00; 7 HEAD 51-59 LBS. 48.00; 17
 HEAD 71-79 LBS. 45.00.
 NEXT STATE GRADED FEEDER PIG
 SALES FRIDAY, NOV. 14. RECEIVING
 FROM 6 A.M.-11 A.M. SALE 1:30 P.M.
 SHARP!

Indiana Hogs

Springfield, Il
 Thur October 30, 1997
 USDA-II Market News Service Indiana-
 Ohio Direct Hog Flash
 Barrows and Gilts: Mostly .50 Higher.
 Demand moderate to good on a moderate
 movement. Country Plant US 1-2 230-260
 LBS. 43.50-45.00 few 45.50 44.50-46.00
 US 2-3 230-260 LBS. 41.50-43.50
 210-230 LBS. 37.50-41.50
 Sows: Weak to 1.00 Lower.
 US 1-3 300-400 LBS. 31.50-33.50
 400-500 Lbs. 33.00-34.00 500-600 LBS.
 34.00-37.00 few over 600 lbs. 38.00
 Boars: 31.00-33.00 Few 34.00
 Preliminary estimate: 31,000 Source:
 USDA-Illinois Dept of Ag Mkt News,
 Springfield, Il 217-782-4925 1000c cjc

**New Holland
 Feeder Pigs**

New Holland, PA
 Wed., October 29, 1997
 Report Supplied by USDA
 TODAY 661 HEAD
 LAST WEDNESDAY 334
 LAST YEAR 522
 TREND: COMPARED TO LAST
 WEDNESDAY FEEDER PIGS FULLY
 STEADY. SUPPLY INCLUDED 40 PER-
 CENT SOLD FOR SLAUGHTER. ALL
 PIGS WEIGHED ON ARRIVAL AND
 SOLD BY THE HUNDREDWEIGHT.
 US#1-2: 50 HEAD 28 LBS. 106.00; 110
 HEAD 31-38 LBS. 85.00-95.00,
 WEIGHTED AVG. 34.09, WEIGHTED
 PRICE 87.37; 91 HEAD 41-49 LBS.
 80.00-84.00, WEIGHTED AVERAGE
 45.16, WEIGHTED PRICE 82.07; 40
 HEAD 50-52 LBS. 72.00-78.00,
 WEIGHTED AVERAGE 50.38,
 WEIGHTED PRICE 77.54; 65 HEAD
 60-66 LBS. 66.00-72.00, WEIGHTED
 AVERAGE 62.38, WEIGHTED PRICE
 68.51; 4 HEAD 76 LBS. 52.00.
 US#2: 24 HEAD 48-57 LBS.
 66.00-68.00, WEIGHTED AVERAGE
 51.25, WEIGHTED PRICE 67.16.
 SLAUGHTER: 54 HEAD 22-24 LBS.
 115.00-155.00, WEIGHED AVERAGE
 23.24, WEIGHTED PRICE 130.82; 39
 HEAD 31-37 LBS. 76.00-90.00,
 WEIGHTED AVERAGE 33.46,
 WEIGHTED PRICE 84.02; 50 HEAD
 41-44 LBS. 82.00-85.00, WEIGHTED
 AVERAGE 42.50, WEIGHTED PRICE
 83.63; 17 HEAD 52-56 LBS. 68.00-84.00,
 WEIGHTED AVERAGE 54.12,
 WEIGHTED PRICE 76.77.
 AS IS: 83 HEAD 27-61 LBS.
 50.00-100.00, WEIGHTED AVERAGE
 34.58, WEIGHTED PRICE 77.79.
 ALL FEEDER PIGS CONSIGNED TO
 WED. FEEDER PIG SALE MUST ORIGI-
 NATE FROM A QUALIFIED NEGA-
 TIVE OR MONITORED HERD.

Lancaster Hogs

Lancaster Stockyards
 Wednesday, Oct. 29, 1997
 Report supplied by USDA
 HOG MARKET TODAY 867 HEAD;
 LAST WEDNESDAY 783; LAST YEAR
 797.
 BARROWS AND GILTS: COM-
 PARED TO LAST WED. 1.00-1.50
 LOWER.
 US#1-2 230-260 LBS. 46.00-46.50.
 US#1-3 230-260 LBS. 44.50-45.50.

Diffenbach Auction Center

New Holland, Pa.
 Monday, Oct. 27, 1997
 Report Supplied by Auction
 TOTAL LOADS: 92.
 ALFALFA: 120.00-220.00.
 MIXED HAY: 120.00-212.00.
 TIMOTHY: 135.00-205.00.
 ORCHARDGRASS: 117.00-175.00.
 MEADOWGRASS: 157.00.
 STRAW: 125.00-190.00.
 EAR CORN: 92.00-139.00.
 WOOD SHAVINGS: 2.00 BAG.
 FIREWOOD: 60.00-72.00.
 OATS: 3.55.
 RYE: 6.25-8.00.

Green Dragon Hay

Ephrata, Pa.
 Friday, October 24, 1997
 Report Supplied by Auction
 87 TOTAL LOADS.
 MIXED HAY: 31 LOTS,
 100.00-200.00.
 ALFALFA: 4 LOTS, 135.00-198.00.
 TIMOTHY: 13 LOTS, 152.00-200.00.
 STRAW: 7 LOTS, 128.00-151.00.
 EAR CORN: 12 LOTS, 90.00-135.00.
 ORCHARD GRASS: 9 LOTS,
 120.00-172.00.
 OATS: 1.85 AND 2.65 BU.
 FIREWOOD: 40.00, 42.00 AND 55.00
 LOAD.
 RYE: 6.00 AND 7.90 BU.
 BROMEGRASS: 13 BALES AT 39.00
 AND 13 AT 38.00.
 SHAVINGS: 2.25 BAG.

Good's Hay

Leola, Pa.
 Wed., October 29, 1997
 Report Supplied by Auction
 TOTAL LOADS: 79.
 CORN: 102.00-131.00.
 TIMOTHY: 127.00-182.00.
 STRAW: 110.00-147.00.
 MIXED HAY: 117.00-190.00.
 GRASS: 142.00-161.00.
 ALFALFA: 155.00-225.00.
 CLOVER: 140.00-160.00.
 BEANSTALKS: 83.00.

**Middleburg Grain & Hay
 Auction**

Middleburg, Pa.
 Tuesday Oct. 28, 1997
 Report Supplied by PDA
 29 LOADS OF HAY.
 MIXED HAY: 60.00-135.00.
 TIMOTHY: 115.00-127.50.
 ORCHARDGRASS: 100.00.
 STRAW: 82.50-97.50.
 EAR CORN: 87.50-107.50.
 SHELLED CORN: 3.25 BU.
 OATS: 1.85-2.20 BU.
 WOOD: 45.00.

Regional Hay

October 27, 1997
 Eastern Pa.
 HAY & STRAW MARKET FOR
 EASTERN PA - (ALL HAY NO. 2 AND
 BETTER. PRICES PAID BY DEALERS
 AT THE FARM & PER TON.) HAY
 STEADY TO 10.00 LOWER, STRAW
 STEADY.
 ALFALFA 100.00-140.00, FEW RE-
 PORTED 155.00; MIXED HAY
 90.00-145.00, FEW REPORTED 160.00,
 TIMOTHY 90.00-135.00, FEW RE-
 PORTED 165.00; STRAW 70.00-100.00,
 FEW REPORTED 130.00, MULCH
 30.00-50.00.

SUMMARY OF LANCASTER CO.
 HAY AUCTIONS FOR WEEK ENDING
 10/24/97. PRICES PER TON: LOADS:
 188 HAY, 34 STRAW & 34 EAR CORN.
 ALFALFA 135.00-200.00; MIXED
 HAY 120.00-189.00; TIMOTHY
 142.00-207.00; STRAW 125.00-160.00;
 EAR CORN 100.00-135.00.

SUMMARY OF CENTRAL PA HAY
 AUCTIONS FOR WEEK ENDING
 10/24/97. PRICES PER TON: LOADS:
 103 HAY, 9 STRAW & 39 EAR CORN.
 ALFALFA 125.00-182.50; MIXED
 HAY 87.50-160.00; TIMOTHY
 100.00-142.50; STRAW 65.00-130.00;
 EAR CORN 90.00-116.00.

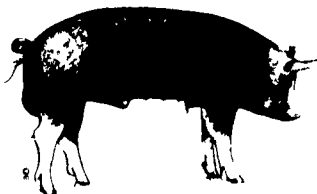
The Windmill

Penn Yan, N.Y.
 Oct. 24, 1997
 Report Supplied by Auction
 GRASS: 1ST CUTTING 70.00-100.00,
 19.00-21.00 LARGE ROUND BALE
 EACH.
 TIMOTHY ALFALFA: 1ST CUTTING
 80.00-95.00.
 ALFALFA TIMOTHY: 160.00-175.00
 STRAW: 1 LOAD AT 82.00.
 SALES AT 11 A.M. BEGINNING FRI,
 NOV. 7. STARTING MON., NOV. 10,
 HAY SALES MONDAY & FRIDAY 11
 A.M.

Westminster Hay

Westminster, Md.
 Tuesday, October 27, 1997
 Report Supplied by Auction
 134 LOTS.
 ALFALFA: 3.20-6.10 BALE.
 TIMOTHY: 2.40-3.70 BALE, 28.00
 LARGE ROUND.
 CLOVER: .85-1.00 BALE.
 MIXED HAY: 1.65-4.90 BALE.
 GRASS: 2.00-4.50 BALE, 31.00-35.00
 LARGE ROUND.
 STRAW: 1.40-2.60 BALE.
 MULCH: 1.25-1.50 BALE.
 RYE: 6.00 BU.
 FIREWOOD: 55.00-90.00 CORD.

**CARLISLE
 LIVESTOCK
 MARKET, INC.**
**FED and FEEDER
 CATTLE SALE**
TUES., NOV. 4 & 18 7:00 PM
 Early Bird Pens Close 2 PM Turn South Off I-81 @ Exit 12
 Evenings Jim (717) 249-2359 Market (717) 249-4511



**HERE TODAY • HERE TO STAY
 For Buying or Selling Livestock
 Call Dunlaps at (717) 397-5136**

Slaughter Cattle
 Every Monday 9:30 AM

Feeder Cattle
 Every Friday thru Nov. 21
 (Large Percent of Farm Fresh Cattle)

**Receiving
 Market Hogs
 Wednesday
 6:30 AM To 11:30 AM**

**Sheep & Goat
 Consignments Welcome
 for Mondays
 Sheep & Goat Manager ..
 Jim Hunsicker
 717-397-5136 or 717-656-4264**

**Graded Sow & Boar Sales
 Nov. 4 & 18**



(1st & 3rd Tues. of month)
**Receiving 6:00 AM to Noon
 SALE - 2:00 PM (Large Lots)
 2:30 PM - (Individuals)**

Sows to be graded & weighed in 50 lb increments
**PROBLEM SOWS
 SOLD SEPARATELY**

**PENNFIELD
 GRAIN BANK**

Pennfield Offers A
 Sound Program For
 The Dairy Farmer To
 Use His Grain
 "Same As Cash" To
 Reduce His Monthly
 Feed Bill And To
 Avoid Having To
 Take "Harvest Price"
 For His Grain

Prices Week Of 11/03/97
 Corn \$3.29 Bu.
 Soybeans \$6.95 Bu.
 Barley \$2.47 Bu.

- Prices Updated Weekly
- Grain Bank Balance Shown On Each Invoice
- No Hidden Charges

Call
 1-800 732 0467
 pennfield feeds



**INDEX
 Five Sections**

COLUMNS

Now is the Time..... A10
 Ida's Notebook..... B 4
 On Being A Farm Wife..... B 5
 Family Living Focus..... B 7
 All Gardens..... B13
 Poultry Pointers..... C 2
 Classified Ads..... C11, D 9
 HortiCountry..... D 3
 Business News..... D 4

DEPARTMENTS

Editorial..... A10
 Farm Calendar..... A10
 Farm Forum..... A10
 Futures..... A16
 Mailbox Markets..... B22
 Sale Reports..... B23
 Public Auction Register..... B37

DAIRY

N.Y.&N.J. Milk..... A25
 Dairy Futures Conf..... A28
 Pa. DHIA..... C 4, D 6

FEATURES

Boyd Receives Post..... A26
 Cooperative Awards..... A29
 Swine Awards..... A36
 4 Generations..... B 2
 Women's Director..... B 2
 Grange Cookbook..... B12
 Rural Youth..... B15
 Grange History..... B18
 Franklin Roundup..... B21
 Swine & Sheep Show..... B22
 Beef Roundup..... C 3
 Beaver Livestock Sale..... C10
 Susquehanna Livestock..... D 2

HOME AND YOUTH

Homestead Notes..... B 2
 Home On The Range..... B 6
 Cook's Question Corner..... B 8
 Kids Korner..... B10
 4-H Happenings... B14, 21, C11
 You Ask, You Answer..... B14

SPECIAL SECTION

Foraging Around

**Walter M. Dunlap and Sons
 LANCASTER STOCKYARDS**

An Old Line Commission Firm Dedicated to
 Livestock Marketing for the 21st Century!