

Y EQUIPMENT



QUALITY HAY CROPS

er ment to handle bales when ready to feed. ters will work, but the "rope" in the middle of m and can result in wasted feed. e bal an weigh from 1400# - 1600#. Due to the ex as much air as possible, the bale chamber righ heavy duty drive system, consistent density

control, and reliable pick-up mechanism are also required. Balers equipped with a built in cutting mechanism are able to increase bale density by up to 20%, and prechopped material can be easily fed. Be sure to use untreated sisal, plastic or nylon twine if you intend to wrap high moisture bales. Treated sisal twine produces a chemical reaction that will burn through plastic film.

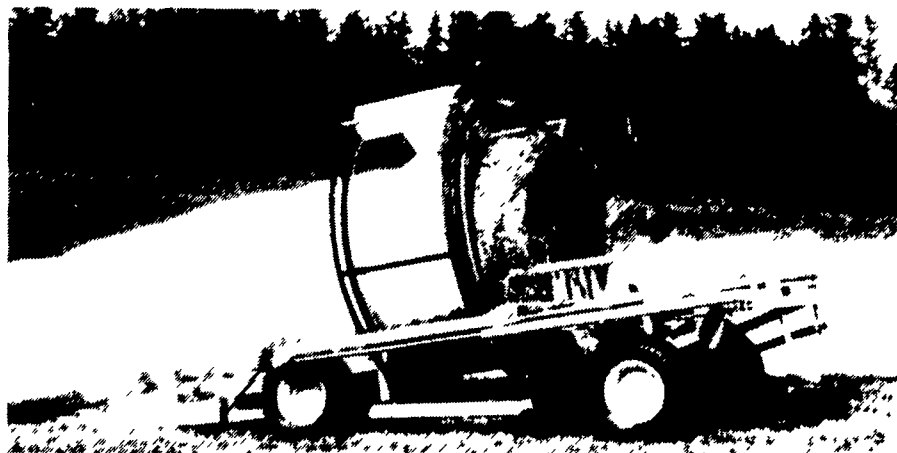
TUBE-LINE BALEWRAPPER

For optimum speed and efficiency patented Tube-Line Wrappers are the answer! Tube-Line Wrappers wrap a continuous row of bales. The airtight application of stretch wrap film retains moisture balance as haylage matures and prevents air infiltration. The shrink wrap also

prevents wind damage and accommodates variation in bale size and shape without air gaps.

Long stem silage is better used in the animals digestive system. Feeding high quality haylage from wrapped bales can reduce or eliminate feeding grain while retaining or increasing weight gains or milk production.

Tube-Line wrappers for all round bales or large square bales are available in either manual or fully automatic models.



From field to yard, efficiently



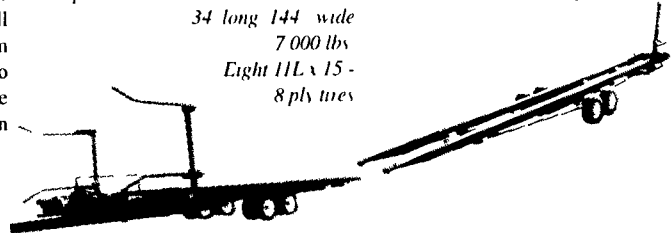
Here's the world leader in large, round bale pickup, transport and unloading with one operator who never leaves the tractor cab

Fifteen years of proven performance on every terrain and all weather or field conditions from Alberta to Alabama makes Buffalo the master of fast, convenient, safe handling of bales of more than 2,000 lbs

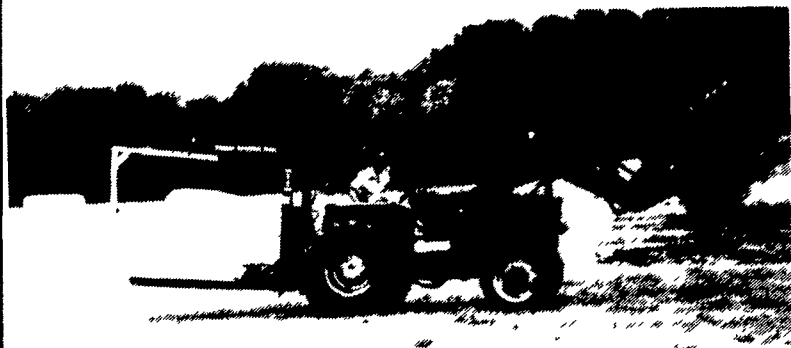
Model 217 with adjustable pickup arms on both sides split left/right deck chains with twine protecting guide channels 10 to 14 bale capacity

*34 long 144 wide
7,000 lbs
Eight 11L x 15 -
8 ply tires*

*Model 208 for use with smaller tractor or pickup truck 7 to 10 bale single row transporter
41 long 98 wide 3,980 lbs
Four 12.5L x 15 12 ply tires*



AG WRAP BALE WRAPPER



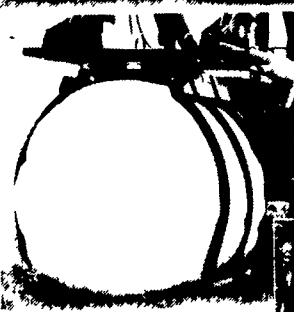
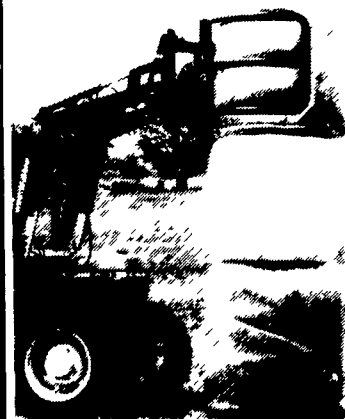
Wraps Bales up to 5 ft. x 5 1/2 ft.

- 3-Point Hitch
- Hydraulic requirement 4 GPM - 2 remotes
- Pre-stretcher for plastic
- One-man operation
- Wrap on the move
- Transport bales to storage
- Picks bale up, wraps them all hydraulically
- Built in U.S.A.



WRAPPED BALE GRABBER

The Logical and Economical Answer to Your Handling and Stacking of Wrapped Round Bales.



WIFO Bale Grabs are perfect for positive control of both wrapped and unwrapped bales. The extra wide (6") spread width will pick up bales from any direction. "Double Hinge" points on each arm provide extra stability.

WIFO'S

- Outstanding Quality Workmanship

100 Stover Drive
Carlisle, PA 17013
717/249-6720

100-120 Lehigh Ave. • P.O. Box 928
Batavia, New York 14021-0928
716/343-5411

Serving Farmers Through Farm Equipment Dealers Since 1961"