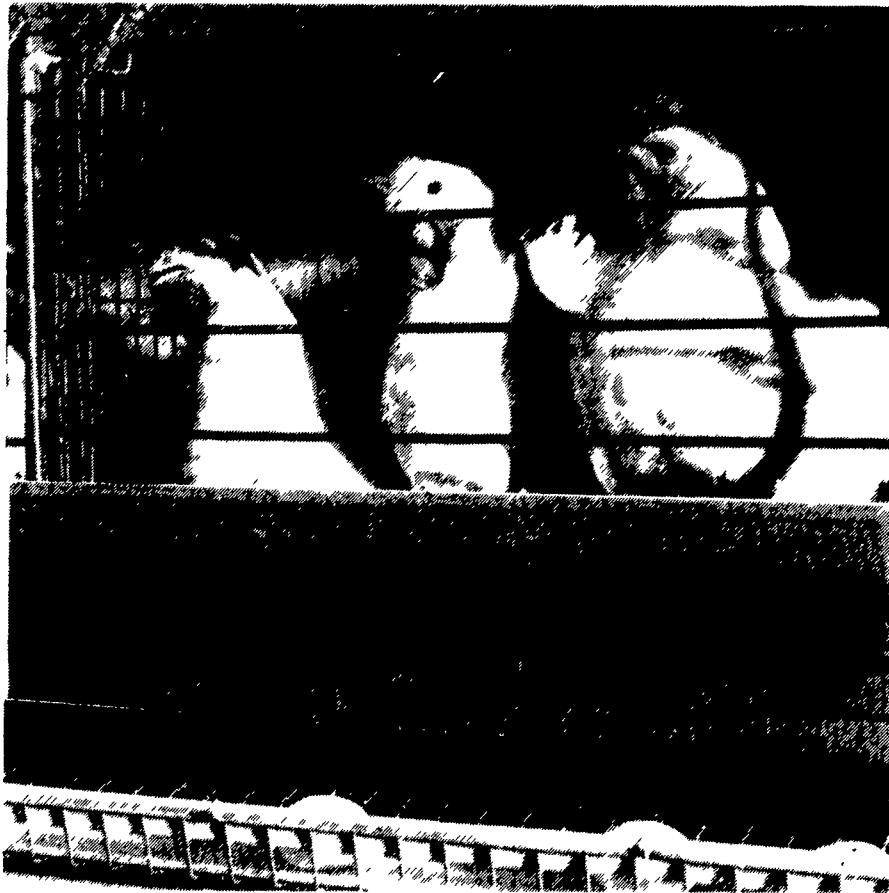


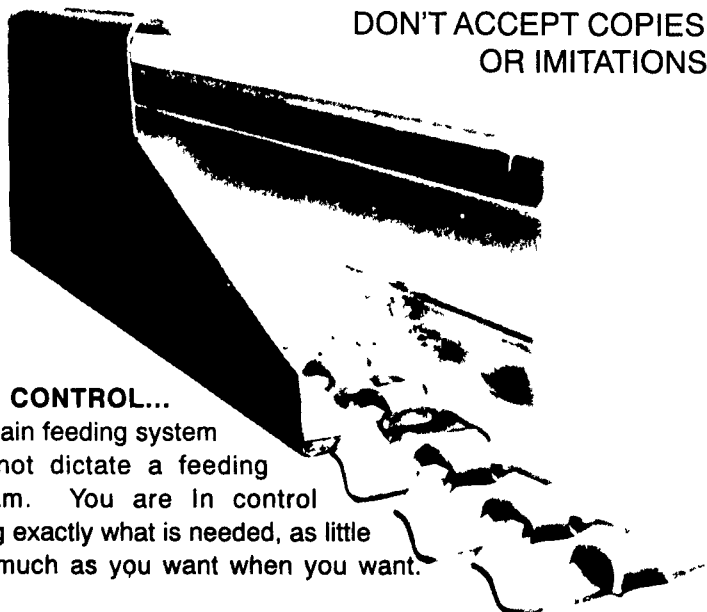
THE FUTURE GENERATION



No matter what you have heard from our competition, Big Dutchman is still Number One, with the best cage systems by far. Locally some Big Dutchman systems are approaching their twentieth year of service, and still going strong.



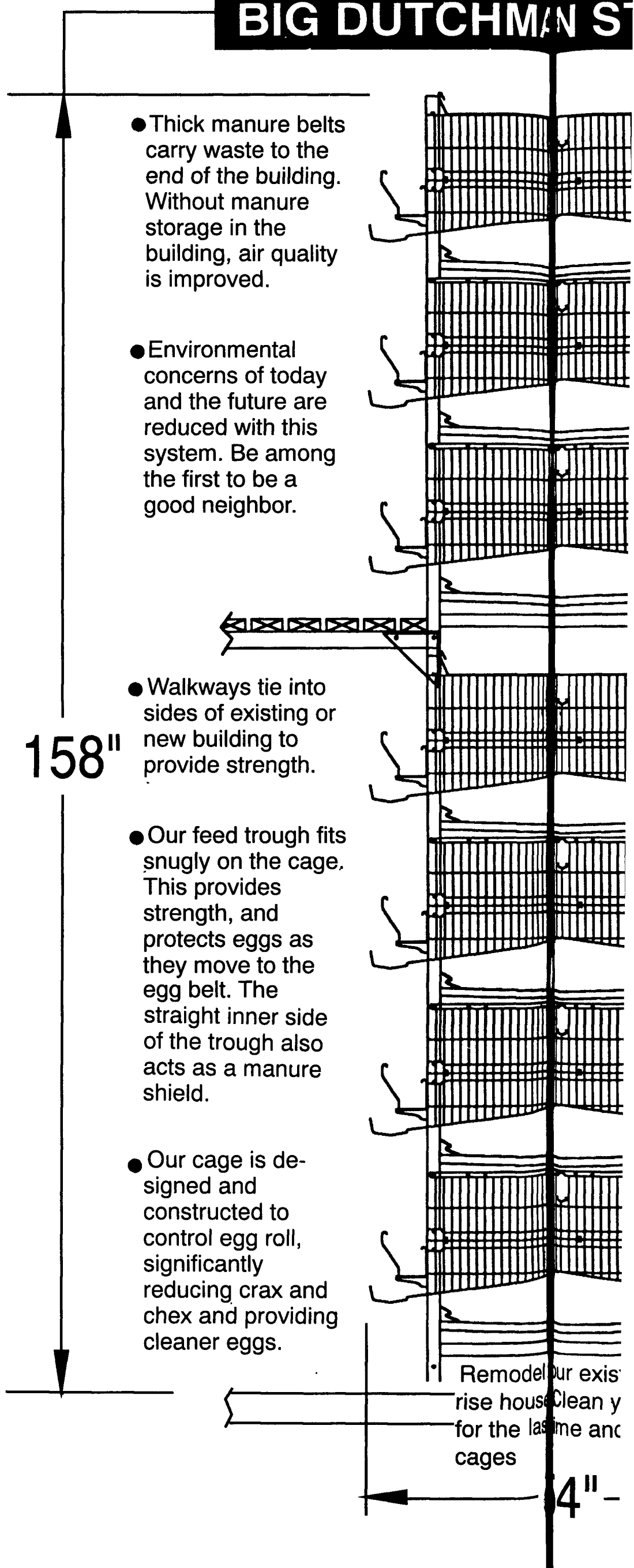
- FUTURE GENERATION COLLECTION
- FUTURE GENERATION MANURE REMOVAL
- FUTURE GENERATION FEEDING
- FUTURE GENERATION CAGES
- FUTURE GENERATION ENVIRONMENTAL CONTROL
- ALL BUILT IN AMERICA
- THIS SYSTEM ONLY AVAILABLE THROUGH HERSHEY EQUIPMENT.



DON'T ACCEPT COPIES OR IMITATIONS

FEED CONTROL...
The chain feeding system does not dictate a feeding program. You are in control feeding exactly what is needed, as little or as much as you want when you want.

BIG DUTCHMAN SYSTEM



158"

- Thick manure belts carry waste to the end of the building. Without manure storage in the building, air quality is improved.
- Environmental concerns of today and the future are reduced with this system. Be among the first to be a good neighbor.
- Walkways tie into sides of existing or new building to provide strength.
- Our feed trough fits snugly on the cage. This provides strength, and protects eggs as they move to the egg belt. The straight inner side of the trough also acts as a manure shield.
- Our cage is designed and constructed to control egg roll, significantly reducing crax and chex and providing cleaner eggs.

Remodel our existing house Clean y for the las time anc cages

4"