

- L35 New Holland Skid loader \$3,500
- HD5 Allis loader, nice machine, good U/C, needs work
- Mack S/A rear cut offs, 38,000, Mack & Rockwell cut off.
- 1986 Dump Trailer sup., center point Fruehauf
- Engines: Mack 237, MS300, Cat 3208, others
- (2) Alum Dump Boxes, 16' & 18' with cyl & pump
- (2) Rolloff Units Dempster & winch type, cheap
- Air comp. 5 HP
- 1991 Top Kick Cab., Mack MH cab Mercedes motor & trans.
- 20' Reefer Box Diesel with stand by

ALSO OTHER TRUCK PARTS AVAILABLE - CALL!
WE BUY TRUCKS & PARTS
610-944-9871



1984 Ford F800, 8 2 Diesel with new rebuilt 5-2 Speed, Air Brakes, 32,600# GVW, New Hoist with All Welded 16' Grain Body, 52" High Sides and Double Acting Tailgate with Grain Chute

\$18,600

END OF SEASON - MUST GO - WILL CONSIDER ALL REASONABLE OFFERS

HOSTETLER

Truck Bodies & Trailers
717-667-3921

Milroy PA Located between Lewistown and State College on Rt. 322 in PA

LEFEVER BROS.
CHEVROLET
CHEVY TRUCKS **GEO**

YOUR DIRECT LINE TO GENUINE GM PARTS

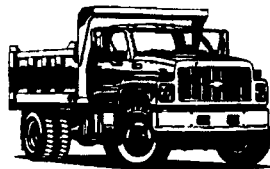
(800) 533-3837

When you call the number listed above, you'll reach our wholesale parts specialists, who can help you keep your GM repair work moving quickly.

- Ask about:
- Specializing in GM Medium Duty Trucks, Current and Obsolete.
 - \$500,000 Parts Inventory.
 - Parts Locator for Those Hard to Find Items.
 - We Ship Anywhere, Local Delivery Available.
 - Experienced, Knowledgeable Personnel.

Mon., Tues., Thurs., Fri.
 7:30 a.m.-4:30 p.m. **(717) 432-9697**
 Weds. 7:30 a.m.-8:30 p.m. *Quality Dealer Since 1921*
 Major Credit Cards Accepted 406 U.S. Rt. 15, Dillsburg, PA 17019

GM Goodwrench Service



Kodiak
Chevy Trucks
GAT DIESEL POWER

3.8 wooded acres, located between Elizabethtown and Brainbridge, 2 miles from river, \$60,000. Call 717-653-0069 between 4-8pm

46A Farmette, Oxford, PA Chester Co. Barn, pond, septic, well. 814-667-3749

Approx. 18A tillable land situated high, beautiful view, perfect for gentleman's farm. T&C Realty. Call Ruth Ann 717/391-5945, 717/299-4885.

Central NJ 60 Acre farm for sale, 5 houses, \$5,000,000. Sheppard, Box 221, Heightstown, NJ 08520.

CLEARFIELD COUNTY: Horses, Horses, Horses, 21 box stall facility, paddocks, training track, 25A, farmhouse, \$225,000. **GLOBAL REALTY ENTERPRISES** 814-237-5591

CLINTON COUNTY: 65A farm, house, barn, out-buildings, valuable timber, \$180,000. **GLOBAL REALTY ENTERPRISES** 814-237-5591

Clearfield County... House, barn, 50 acres, free gas, gas royalty income, \$89,900.

GLOBAL REALTY ENTERPRISES 814-237-5591

COMMERCIAL BUILDING: for lease/sale: 60x80 building for manufacturing or warehouse, large doors, 200 amp service, 2 offices, show room, rest rooms, gas and electric heat, 2 parking lots, includes a 3BR house w/modern kitchen, oil heat. Between Lebanon and Myerstown. Will finance. Call (717)866-7315.

Farm for Sale: 87 acres, 46 tillable, 16 pasture, 25 wooded. 65'x40' barn, 30'x30' machine shed, milking equipment, fencing, water system. Rotationally grazed 6 years. 4 bedroom 2 story house, 1 1/2 baths, free gas, mineral rights. \$115,000. 814/743-6543.

FOR RENT: 6 horse stable plus 7 ac. pasture in Conestoga, PA together w/ newly renovated 3BR, 1BA house. \$1200/mo. (717)872-9728

Northumberland Co.

107 Ac. Farm
 w/House and Barn.
(717) 649-5096

Thinking of selling your farm or business??

Save or Eliminate Capital Gain Tax

1. Do an I.R.C. #1031 exchange!
2. A new strategy within the Internal Revenue code -- No need to reinvest in other real estate!

Give me a call!

(717) 671-0655

John B Niesley, REB

4340 Crestview Road, Harrisburg, PA 17112

NEWER HOUSES FOR SALE BY HOUSE MOVER

Houses are in the way of progress and must be sold & moved for 30% of new construction cost.

Call Steve 717/758-4734

Perry County

100 plus acres of rolling hills woods, tall timber, stream, springs, roads trails and hiking paths nestled against state game lands, north and southeast sides of property Marketable timber 100 year old cabin with all conveniences, private secured road system Low maintenance, low taxes Beautiful campground, potential or private hunting lodge Best of deer turkey hunting **\$325,000**

Call to discuss 717-567-3926

BUSINESS OPPORTUNITY

ESTABLISHED RETAIL/WHOLESALE GREENHOUSE OPERATION SITUATED ON APPROX. 4 ACRES ZONED COMMERCIAL—HIGH VISIBILITY—SUBSTANTIAL ROAD FRONTAGE—EASY COMMUTE TO MAJOR HIGHWAYS CONNECTING CUMBERLAND, DAUPHIN, PERRY AND YORK COUNTIES FOR DETAILS CONTACT ETTA RINE (717) 691-1213 OR (717) 957-3965

REALTY EXECUTIVES

1 (800) 682-2202 (ENTER AD#224)

For Sale by Owner:

270 Acre Dairy Farm
 Tioga Co., PA

160 tillable, balance pasture & small woodland including recreational springfed pond. 50 acres pasture in rotational grazing setup w/water system. 2 homes, 2-story barn w/77 tie stalls on 2" pipeline, 2 silos w/unloaders, heifer barn. 1/2 mile from US Rt. 6, 4 miles from college town. Farm is only 8 months away from being eligible for organic certification.

717/549-7281

KELLER BROS.

(Buffalo Springs) Lebanon, PA

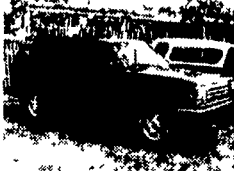
1-800-363-2767

- TRUCK HEADQUARTERS -

1992 F150 XLT S/C
 4x2 AT, V8, Cruise, A/C, Tilt, Win. Locks, Etc. #7481 **\$12,995**



1993 FORD EXPLORER XLT
 Good Condition **\$12,995**



1990 F150 S/C 4x4
 AT, V8, Low Miles, Loaded #8194 **\$13,750**



1992 F150 XLT
 Automatic, V8, 4x4 #2602 **\$13,475**



1993 MERCURY VILLAGER GS
 Loaded, P. Seat #4471 **\$11,750**



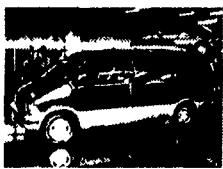
1995 AEROSTAR 4X4
 Dual A/C, Loaded, Low Miles XLT, #3717 **\$17,450**



1995 F150 4X4
 5 Sp, XL Cap, #6011 **\$15,800**



1991 AEROSTAR E.B.
 Dual A/C, Loaded, Low Miles #3226 **\$11,475**



1995 WINDSTAR
 Low Miles, 7 Pass, Loaded, Dual A/C **4 IN STOCK**



1994 RANGER S/C 4x4, XLT, 5 Sp.
 Clean, Local Trade #0136 **\$14,450**



TAURUS and ESCORT
 S.W. All Local Trades, 1988-1995 **5 IN STOCK**
 Starting At **\$2,595**



1995 BRONCO XLT
 4x4, 5.8L Loaded, Automatic, T.Tow #2685 **JUST TRADED**



1989 FORD F350 STAKE BODY
 5 Spd., XL Trim



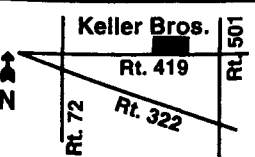
1997 F350 CREW CAB
 4x4, XL and XLT **3 IN STOCK**



1996 FORD 1997 FORD RANGER
 S/C and Reg. Cab 4x4, And 4x2 **12 1/2 IN STOCK**



1994 EXPLORERS XLT and E.B.
 4 Door, Loaded **4 IN STOCK**



KELLER BROS. FORD HAS SERVED CENTRAL PENNA. AREA FOR MORE THAN 75 YEARS.

Mon.-Fri. 9-9; Sat. 9-4
 Most Used Inventory Has A 12 Mo. or 12,000 Mile Limited Warranty

BICYCLE CARRIERS
 SAVE \$\$
 FREE UPS
1-800-WEAVER-D
1-800-932-8373

36 REAL ESTATE

10 1/2 acre farm w/42X440' poultry breeder house, 42X84 fully insulated shop, 2 story 4BR brick house. On Union and Snyder Co. lines. (717)966-0465

120A farm, including 40A timber, large bank barn, city water, excellent hunting, 40 miles from State College, 3 miles from Ext 21 I-80. Clearfield Co 814-345-5907

14A wood land w/water on eastern shore, VA, Northampton Co. Prime deer hunting, near Eastville, VA. \$35,000. 717-865-7447

1997 mobile home, 14x76 Marlette, 2 BR, 2 full baths, many extras, mint condition. Must be moved. Asking \$34,500 717/859-2373.

(2) 23.6 Acre & (1) 49.2 acre wooded lots near Ickesburg, Perry Co. Each \$1600 per acre. Joining, can be bought as 1 tract. Great hunting, fishing, recreation. Perced, approved, mobiles restricted. 717/438-3115

(2) 34.5 Acre wooded lots, \$58,500/each. (1) 12.4 acre wooded lot, \$36,000. Perry Co. near Ickesburg w/Bufalo Stream, perced, approved, private, great hunting & fishing. Mobiles restricted. Can be bought as 1 joining tract. 717/438-3115.

27A+, 1/2 tillable, pasture, good timber, pond, artesian well, 2-story, 3BR, small bank barn, stream, detached garage, smokehouse, surrounded by Amish/Mennonite, \$149,000. Snyder Co. Roy Glick, RD3, Box 139H, Selinsgrove, PA 17870 717-374-9201

3.4 acre Home garden pasture stable and pole shed Quarryville Lanc. Co. (717)786-7747