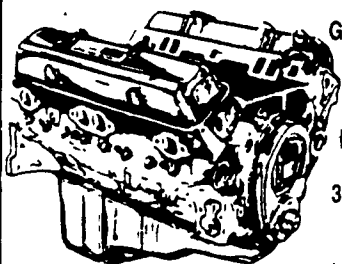


# JONES

**Goodwrench ENGINE HEADQUARTERS**



**GM GOODWRENCH**  
350 V8 1973-85  
Part Number  
10067353  
New Engine - Not Rebuilt  
36 Month or 50,000 Mile Warranty  
**\$1199<sup>00</sup>**

New Engine - No Core Fee

**WE'LL MATCH ANY COMPETITOR'S PRICE!**

**6.5L GOODWRENCH DIESELS**  
From **\$3,175**

Call 394-0711 for prices on other New or Remanufactured Goodwrench Engines. 2.5 Liter thru 454 cid. Gas and Diesel

Chevrolet - Pontiac - Olds - Buick - Cadillac - GMC

## JONES GM PARTS CENTER

1335 Manheim Pike, Lancaster, PA 17604  
Easily Located on Rt. 72 Just off of Rts. 283 & 30  
Hours: Mon-Fri 7:30 a.m. - 9 p.m. Sat 7:30-3  
(717) 394-0711



# WOLF MOTOR CO.

OVER 60 YEARS IN BUSINESS!  
ROUTES 72 & 283, LANCASTER, PA 17601



## CENTRAL PA'S FORD TRUCK DEALER

Sales Reps Charlie Burke, Gary Brenneman, Dennis Asel, Mgr

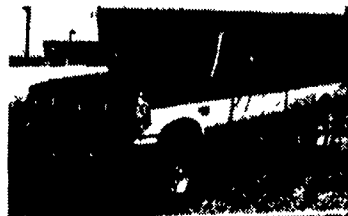
717-299-4331 Toll Free 800-637-6612



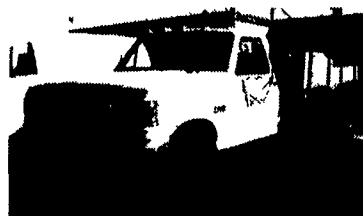
**1997 FORD LT 9513**  
350 Hp Cat Eng. 10 speed, 15' Steel Dump Body, 56,000 GVW  
**\$79,600**



**1994 FORD E-250 CARGO VAN**  
V8, Auto, AC, 91,000 Miles  
**\$9,800**



**1/2-1997 FORD F250 SUPER CAB 4X4**  
Power Stroke Diesel, Auto, XLT Package



**1989 FORD SUPER DUTY F-450**  
460 V-8, 9' Flat Bed, 5 Speed, 60,000 Miles  
**\$11,900**



**1998 FORD LT 9513**  
410 Hp Cat Eng. 10 Speed, 18,000# Front Axle, 46,000# Rear Axle, Tri-Axle Chassis



**1998 FORD LT 9522**  
410 Hp Cat Eng. 10 Speed, 17 1/2' Alu. Dump Body w/Lift Axle  
**\$109,000**



'92 F-350 Diesel, 12' Box, Auto, PS, AC, 86,810Mi.  
**\$11,500**



'85 F-700, 5/2 Spd., 370 Gas, 23,100 GVW, 16' Box, 106" CA  
**\$5,900**

## EVANS EQUIPMENT INC.

7800 Route 13  
Levittown, Pennsylvania 19057  
1 1/2 Miles North of Exit #29 PA T P

Mon - Fri 8:00 to 5:00  
Saturday 8:45 to 1:30

Phone: (215) 547-7200

FREIGHTLINER Talbert Transcraft

## C. Earl Brown, Inc.

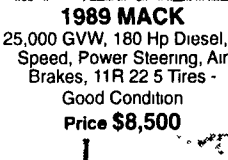
SINCE 1920

4400 Chambers Hill Rd  
Harrisburg, PA 17111  
FAX (717) 564-1118

SID CULBERTSON  
Sales Manager  
Office (717) 564-6151  
Home (717) 697-4982



**1987 International Model S-1600**  
21,000 GVW, 6.9 Diesel - 155 Hp, 5 Speed, Power Steering, 5.57 Ratio, 96" CA 9R225 - Very Clean Truck, 16,000 Original Miles  
**Price \$7,900**



**1989 MACK**  
25,000 GVW, 180 Hp Diesel, 5 Speed, Power Steering, Air Brakes, 11R 22.5 Tires - Good Condition  
**Price \$8,500**



**1990 WHITE MODEL WG64T**  
11 1L Detroit, Blown Engine, 9 Speed 12 & 40, PS, Air Ride, 22.5 LoPro

**JONES**  
**PONTIAC • HONDA**  
**GMC TRUCK**  
1335 Manheim Pike, Lancaster  
Prices based on straight sale, Tax & Tags extra. Trades accepted at actual cash value. Must present this ad at time of purchase for sale price.  
**717-394-0711**

# JONES BEST BUY 4X4'S TRUCKS

Largest Stocking & Selling Extended Cab GMC Dealer in 7 States

 <b>'93 CHEV K15 4x4</b> 5 Spd., 350, AC, Silverado #7611 Was \$18,400 <b>SALE \$15,819</b>	 <b>'92 FORD AEROSTAR 4x4</b> XLT, AT, AC, V6 #7586 Was \$12,800 <b>SALE \$10,815</b>	 <b>'95 DODGE DAKOTA XCAB 4X4</b> AT, AC, V6, SLT #7596 Was \$18,780 <b>SALE \$16,471</b>	 <b>'91 CHEV G30 VAN</b> Cargo, AT, AC, #7581 Was \$9,750 <b>SALE \$7,900</b>	 <b>'95 CHEV K25 4x4 DIESEL</b> AT, Silverado, AC, 6.5 Turbo, #7529 Was \$23,800 <b>SALE \$21,735</b>
 <b>'94 CHEV ASTRO</b> All Wheel Drive, LT, AT, AC, V6 #7582 Was \$16,400 <b>SALE \$14,100</b>	 <b>'96 CHEVY S10 4x4</b> 5 Spd., AC, V6, 17,000 Mi., #7606 Was \$16,900 <b>SALE \$14,700</b>	 <b>'96 GMC SONOMA XCAB 4X4 SLS</b> AT, AC, V6, 19,000 Miles, #7625, Was \$20,800 <b>SALE \$17,800</b>	 <b>'95 GMC SONOMA XCAB 4X4</b> AC, V6, 5 SPD., SLS, #7619, WAS \$17,400 <b>SALE \$15,800</b>	 <b>'91 CHEV 4x4 SUBURBAN DIESEL</b> Silverado, AT, AC, 8 Pass, #7574 Was \$16,800 <b>SALE \$13,770</b>
 <b>'95 CHEV K25 XCAB 4X4</b> AT, AC, 350 Silverado, 8600 GVW, 36,000 Miles #7555 Was \$24,877 <b>SALE \$22,800</b>	 <b>'94 CHEV K15 XCAB 4x4</b> 350, AT, AC, Silverado, 40,000 Miles #7534 Was \$20,800 <b>SALE \$19,635</b>	 <b>'95 GMC K15 4x4</b> 5 Spd, Z71, 350, SLE #7583 Was \$20,700 <b>SALE \$18,800</b>	 <b>'94 CHEV S10 BLAZER 4x4</b> 4 Dr., AT, AC, V6 #7607 Was \$13,400 <b>SALE \$10,900</b>	 <b>'97 DODGE 3500 4X4 SLT DIESEL</b> Cummins Turbo, AT, AC, 200 Miles, #7622, Was \$31,200 <b>SALE \$28,842</b>
 <b>94 CHEVY SUBURBAN 4x4</b> AT, AC, 350, Silverado, 8 Pass., #7604, Was \$22,750 <b>SALE \$20,850</b>	 <b>'94 CHEV 3/4 XCAB 4X4</b> AT, AC, 350, Cheyenne #7545, Was \$18,900 <b>SALE \$16,815</b>	 <b>96 TOYOTA TACOMA 4x4</b> 5 Spd., AC, 4 Cyl., Only 16,000 Mi., #7602 Was \$17,900 <b>SALE \$15,540</b>	 <b>95 FORD F150 4x4</b> XLT, AT, AC, 5.8L, 26,000 Mi., #7600 Was \$19,800 <b>SALE \$17,800</b>	 <b>92 CHEVY S10 BLAZER 4x4</b> 4Dr., AT, AC, V6 #7597 Was \$14,440 <b>SALE \$12,300</b>

Prices based on straight sales, Tax & Tags extra. Trades accepted at actual cash value. Must present this ad at time of purchase for sale price.