

**WILLIAM H. WESSELS  
USED CARS**



91 Chevy S10  
Basic Model, 99,207 Miles  
\$2,990



94 Ford F150 4x4 6 cyl,  
5 speed, AC, 100,207 miles  
\$10,900



88 Chev Suburban 4x4, V8,  
Auto, AC, Only Average  
\$5,990



88 Jeep Cherokee Chief, 4.0  
Liter, 6 Cyl., 5 Speed, PS, PB,  
AC  
\$4,990



95 Ford Aerostar XL 3.0, V8,  
Nicely Equiped, 61,400 Miles  
\$9,990



92 Dodge Ram 150 LE 4x4  
8.2 V-8, Auto, AC, PS,  
116,211 Miles  
\$8,990



95 Dodge Ram 350 Van  
5-9, V8, Auto PS, AC,  
39,417 Miles  
\$12,900



89 Chevy C-30 Cargo Van,  
V8, Auto  
\$3,990



92 Chev K1500 4x4  
V-6, 5 speed, PS, PB, No AC,  
92,105 Miles  
\$8,900



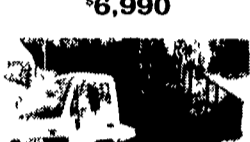
90 Ford E250 Cargo Van  
6 cyl, Auto, AC  
\$6,990



95 Jeep Cherokee Sport 4x4  
4dr, 4.0 Auto, AC, Deep  
Green, 36,012 Miles  
\$16,900



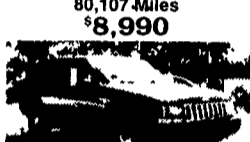
90 Ford Bronco XLT  
5.8, Auto, AC,  
80,107 Miles  
\$8,990



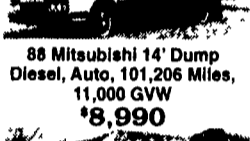
88 Mitsubishi 14' Dump  
Diesel, Auto, 101,206 Miles,  
11,000 GVW  
\$8,990



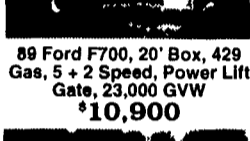
89 Ford F700, 20' Box, 429  
Gas, 5 + 2 Speed, Power Lift  
Gate, 23,000 GVW  
\$10,900



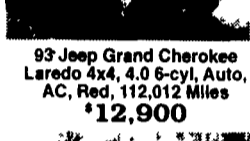
93 Jeep Grand Cherokee  
Laredo 4x4, 4.0 6-cyl, Auto,  
AC, Red, 112,012 Miles  
\$12,900



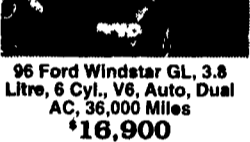
96 Ford Windstar GL, 3.8  
Liter, 6 Cyl., V6, Auto, Dual  
AC, 36,000 Miles  
\$16,900



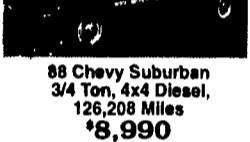
88 Chevy Suburban  
3/4 Ton, 4x4 Diesel,  
126,208 Miles  
\$8,990



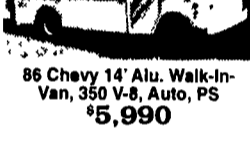
86 Chevy 14' Alu. Walk-in  
Van, 350 V-8, Auto, PS  
\$5,990



95 Jeep Grand Cherokee Laredo  
4.0 Liter, 6 Cyl, Auto, PS, AC,  
79,307 Miles  
\$15,990



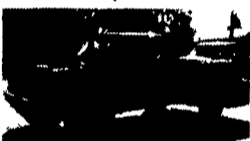
91 Ford F150 4x4,  
V8, Auto, 5 Speed  
\$5,990



95 Jeep Cherokee Sport  
4.0 Liter, 6 Cyl, Auto, PS,  
AC, 90,602 Miles  
\$11,900



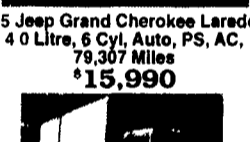
84 Mack Diesel,  
22' Morgan Box/Lift gate,  
29,500 GVW, 180,000 Miles  
\$7,990



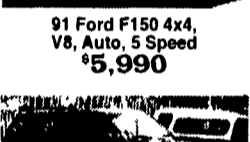
92 Ford Explorer XLT  
V-6, Auto, PS, PB, AC,  
105,206 Miles  
\$11,900



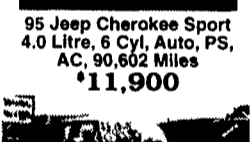
96 Ford 4x4 x-Cab, 351  
V-8, Auto, PS, PB, AC,  
97,207 Miles  
\$14,900



89 GMC K1500  
V8, Auto, 69,207 Miles  
\$9,900



88 Chev C-70 22' Box,  
366 Gas, 28,000#GVW,  
13,208 Miles  
\$14,900



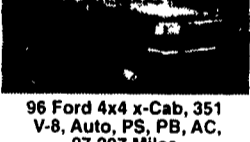
94 Jeep Cherokee Grand Laredo  
4.0 Liter 6 Cyl, Auto, PS, AC,  
67,805 Miles  
\$15,900



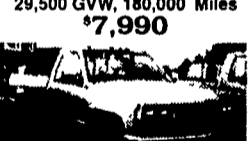
92 Ranger XLT Extra Cab  
5 speed, AM/FM, 2-3-4  
Cyl, nice, 94,000 Miles  
\$5,990



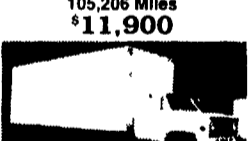
88 GMC 18' Box, 350, V-8, 5  
Speed, 59,916 Miles  
\$9,900



88 Chevy Alum. Walk-in  
V8, Auto  
\$8,990



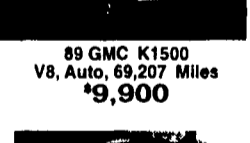
93 GMC Suburban, 350 V8,  
Auto, AC, Barn Doors, One  
Owner, Rear Seat & AC,  
75,206 Miles \$20,900



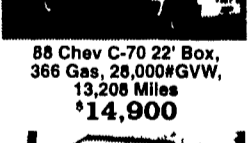
90 Jeep Cherokee Sport  
4.0 6 Cyl., Auto, AC, 122,206  
Miles \$5,990



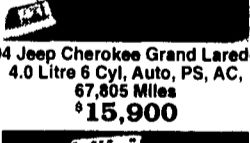
90 Chevy K1500 Shortbed  
Meyers Angle Plow, 100,206  
Miles \$8,990



92 Dodge Ram 350, 10'  
Enclosed Utility Box  
w/Power Lift Gate, One  
Owner, 61,206 Miles  
\$12,900



93 GMC Cargo Van, Short  
Wheel Base, Windowed, V6,  
Auto, PS, 112,206 Miles  
\$4,990



92 Jeep Cherokee Sport 4x4  
4.0 6 Cyl., Green, 107,206  
Miles \$8,990



92 Dodge Ram 350, 10'  
Enclosed Utility Box  
w/Power Lift Gate, One  
Owner, 61,206 Miles  
\$12,900



93 GMC Cargo Van, Short  
Wheel Base, Windowed, V6,  
Auto, PS, 112,206 Miles  
\$4,990



92 Dodge Ram 350, 10'  
Enclosed Utility Box  
w/Power Lift Gate, One  
Owner, 61,206 Miles  
\$12,900

**WILLIAM H. WESSELS  
USED CARS**

811 Route 15 Dillsburg, PA  
1-800-440-4433 1-717-432-2918  
Notary Public - Temporary Tags

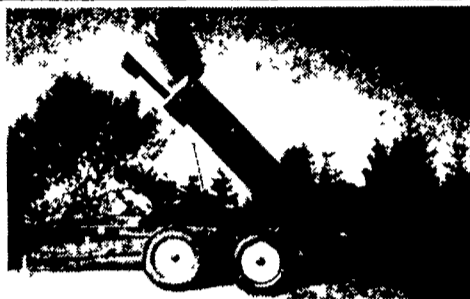
**JonesExpress®**  
Private Fleet - Maintained Locally  
Call 800-365-6637 x 235



1990 International (#480220); 350  
Cummins Eng.; Eaton 10 Speed Road  
Ranger Trans.; Glider Kit (9/25/92);  
391,286 miles; Serial #067146  
Price Right - under \$20,000



SPECIAL ON HEAVY SPEC'D NEW  
'96 TRUCK CALL NOW!!  
New 1996 Navistar Cab M11, 8LL trans,  
20,000#FA, 46 000# Hendrickson Walking Beam  
susp 216" of platform, 146" CT, Double frame, +  
Jake Brake, PTO, 385/65/22.5 front floats Full  
warranties FET included Was \$84,500 \$62,500  
(717)733-0724 or (717) 733-8528



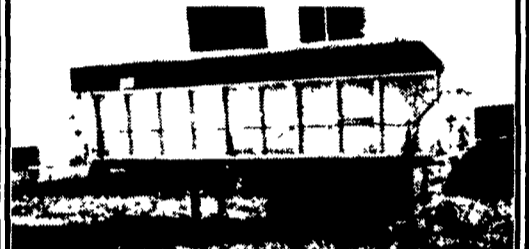
**6-Ton  
FARM DUMP TRAILERS**  
Direct from Manufacturer

- 10 ft. x 7 ft. • Floating Tandem Axle
- 3 ft. Front, 3 ft. Tailgate & Grain Chute
- 16 in. Extendable Sides
- 10 ga. Floor & Sides
- 11Lx15 Flotation Tires
- 2-Way 4 in. x 24 in. Hydraulic Cylinder includes hoses

FREE Delivery  
Price \$3,200 To Northeast USA  
Phone (519) 765-4230  
Fax 519-765-4507



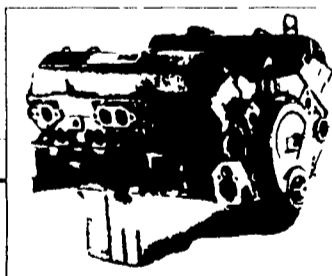
77 International Loadstar, 345, 4+2, 14'  
Midwest Dump, New Tires & Paint, 67,000  
Miles ... \$4,000 OBO



64 Parker 24' Aluminum Dump, Roll Tarp,  
New Brakes & Bearings \$6,000 OBO  
610/562-8004 or  
610/562-8940

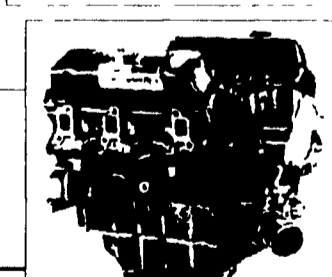
Join The Goodwrench Power Team!

**WHY BUY REBUILT?  
CHECK OUR PRICES ON  
GM/GOODWRENCH  
BRAND NEW ENGINES!**



350 LD NEW  
ONLY \$1195

Call for pricing on 350 MD



4.3L V6 Remanufactured  
1985-1991  
ONLY \$1585

2.8L V6 NEW  
ONLY \$1495

Many others priced comparatively low

Covered by General Motors 3 Year/50,000 Mile Warranty

COMPLETE GM  
CAR & TRUCK  
PARTS DEPARTMENT  
We Ship Anywhere!

SAME DAY  
DELIVERY  
on many GM &  
A/C Delco parts

Free PARTS  
LOCATER  
SYSTEM  
for hard to find parts

MOTOR HOME  
& RV PARTS  
available for  
all models

**DAN PHELPS**



100 S. Museum Road,  
Shillington, PA 19607



**Goodwrench  
Service**

610-777-1300 or 800-397-4041  
SERVICE DEPT'S. HOURS: MON. - FRI. 8 AM - 5 PM